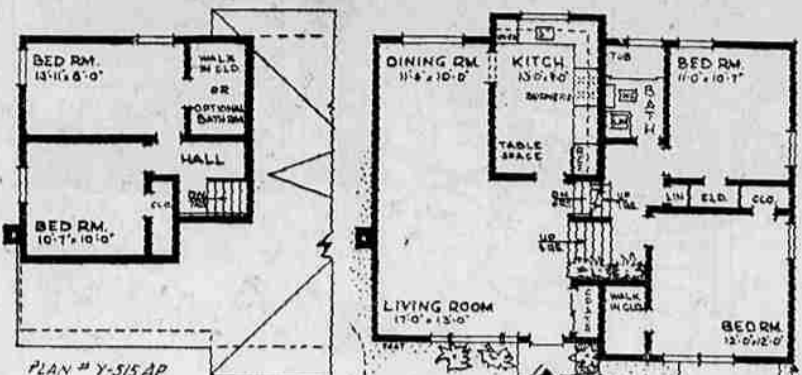


Capital Journal HOME PAGE

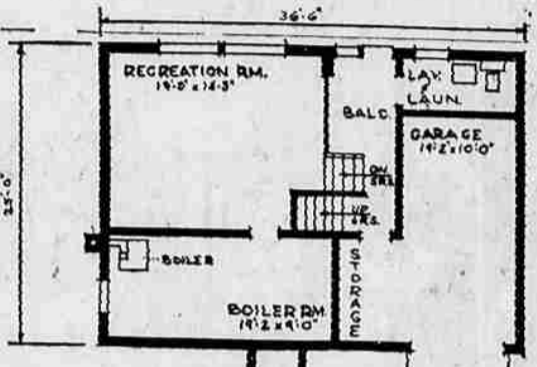
Edited by MARK TAYLOR

HOMES FOR AMERICANS



AP Newsfeatures

PRIZE WINNING plan for a split level house, this design Y-515AP, provides four bedrooms in a minimum of space in a house that covers only 912 square feet. In addition, the garage is provided for on the lower level where a spacious recreation room can be finished. Two bedrooms and bathroom are accommodated over the garage part of the house; two more bedrooms above the living room and diningroom area. Herman York, 90-04 161st St., Jamaica 32, N.Y., is the architect.



Magnolias for Home Planting Is Given Boost

Perhaps no other tree, commonly associated with a certain section of the U. S., is more readily adaptable to Western gardens than is the Magnolia, long associated by romance and tradition with the deep South.

Because some species produce their flowers before the foliage appears it is possible to select species so that there will be a succession of bloom from March through July or into August. The first to flower is the species *Stellata*. Its flowers are white and fragrant, blooming in March, usually. It is more of a shrub than a tree rarely exceeding 15 feet in height. *Salicifolia* is the next species to bloom with flowers about five inches across, fragrant, cup-shaped. This tree may reach 30 feet under good conditions.

Next in order of blooming comes the species "*Kobus*" with lily-shaped, white blooms to five inches across.

Dendrata is the next species to bloom, coming in April or May. It has large, white, fragrant, cup-shaped flowers to six inches across.

Soulangiana is one of the more frequently seen magnolias and is one of the handsomest of spring flowering trees. Its flowers are cup-shaped up to six inches across and are usually purple though there are varieties with pure white flowers.

Acuminata species or the Cucumber tree may reach 100 feet in height. Flowers of this species are not large but retain the common elm shape associated with magnolias.

One of the finest of species is the grandiflora, the evergreen magnolia culture.

Another advantage to the magnolia for home planting, in addition to the gorgeous blooms is that it requires no pruning. In fact, actually resists it. Fertilizing with well-rotted stable manure every two or three years is considered sufficient feeding by many experts.

Few insects bother the magnolia, the principal offender being scale which can be readily controlled with emulsible oil spray.

A word of caution in planting magnolias, however, they should not be placed in locations where they might be subject to damage from wind as the branches tend to be a bit brittle and windstorms do more damage to them than any other cause of injury.

Lack of Proper Care May Result in Moss-Filled Lawn

The presence of moss in the lawn can usually be traced to a lack of proper lawn care. However, weather conditions like we've had this year will encourage moss in the best of lawns.

Lack of fertility, improper watering, too much shade, poor drainage, very acid soils, and cold, wet weather all encourage moss. Each of these factors should be considered in determining why moss is in your lawn. If it has been some time since any lime has been applied, the application of 75 to 100 pounds of agricultural lime per 1000 square feet will be beneficial.

To eradicate moss with ammonium sulfate, apply the material at the rate of 8 to 10 pounds per 1000 square feet and don't water it in. The grass will be temporarily damaged but will recover quickly and respond to the added fertility.

Extension bulletin 518 entitled "Home Lawns for Oregon," treats moss control and many other phases of lawn care and is available free of charge at the County Extension Office, Room 75, Courthouse.

New Plywood Resistant to Burns, Stains

The new char-proof and stain-proof hardwood plywood, termed "beautyguard" by the trade, is expected to be widely used for heavy-duty purposes such as bar tops, counters, and tops for dressers, tables and desks. It will also be available to the home craftsman for these same uses through retail lumber yards and plywood shops.

The material is unaffected by alcoholic beverages and by household liquids of acid or caustic nature. A burning cigarette held directly against the hardwood plywood will not char the beautiful surface. The material is made by laminating a thin layer of aluminum foil beneath the face veneer of the plywood, and by finishing it with approved materials. The aluminum rapidly conducts heat, preventing charring of the wood surface.

age from winds as the branches tend to be a bit brittle and windstorms do more damage to them than any other cause of injury.

How to Guard Doors Against Puppy Scratches

One way to protect a screen door from a puppy's scratching is to attach hardwood of the tempered pressed wood type around the lower framing and extending over part of the screen.

Fido can scratch on this smooth hardwood all day without injuring it. It is an extremely dense and tough material.

Bevel the edges slightly with a file or sandblock and use 1/4 inch bands to fasten the material. A coating of clear penetrating sealer will retain the attractive dark brown color and prevent Fido's scratches from showing.

Similar protective panels may be installed on frequently used doors and on push panels on swinging doors.

Participation in Rose Show Parade Urged by Salem Man

By MARK M. TAYLOR
About this time of year most Oregon and Washington communities are making extensive preparations in one of Oregon's most famed spectacles, the Portland Rose Festival. Floats are being designed, flowers grown for their decoration and marching units rehearsing for the grand floral parade that will climax the five day celebration.

The shortage of roses and other flowers because of the unprecedented winter places a greater responsibility upon neighboring cities to help by participating in every possible manner.

We have been greatly disturbed by a lack of representation from Salem in this Oregon show of shows the past two years and strongly urge immediate planning for representation this year.

The Portland Rose Festival assists other cities in financing the cost of constructing a float for entry in the grand floral parade by furnishing each sponsoring group with a quantity of Rose Festival tickets which they may sell to raise funds for such expenses as may be incurred.

Salem Chided
It seems, to us, most strange that Oregon's second largest city, and the seat of the state government has deferred participation the past two years.

We believe that any civic minded body in Salem could undertake to provide an entry by starting preparations immediately. It is noteworthy that several communities much smaller than Salem have made their entry a "primary" civic activity and have not only provided a creditable entry but have, through the sale of the ticket books mentioned actually ended up with a surplus on which to start the next year's planning.

Complacency is one of our greatest evils, and since Rose Festival time is but two months away, there is no time to be lost.

Some persons argue that the winter freeze makes it almost impossible to secure flowers with which to decorate a float but we want to remind those persons that all kinds of flowers, as well as roses, may be used. In most cases, once the pattern and colors of the

float are decided upon, annual plants can be sown now that will produce blooms for use in decorating those floats. The floats need not be professionally constructed for there are many talented designers of amateur standing that would be complimented to be asked to assist.

Therefore, we cannot urge too strongly that some civic organization undertake this project immediately.

To illustrate what one Oregon community has done to be assured representation: The 1954 committee of the Beaverton Junior Chamber of Commerce produced a prize winning float that cost \$711, including the purchase of a truck chassis, and, even then, finished with a profit of more than \$300 for the organization's treasury.

Practical Way
The practical, financial assistance from the Rose Festival Association is simpler: Any city in the Northwest entering a float in the parade is given 400 season ticket booklets which may be sold outside of the city of Portland for \$2.40, including tax. The tax is remitted to the association for transmittal to the Department of Internal Revenue, the remainder to be retained by the sponsoring group. Thus \$800 can be raised towards the cost of the float. This amount is increased to 500 tickets, and a possible \$1000 gain, if a band accompanies the float.

The Beaverton Jaycees further reduced their costs by distributing flower seeds to residents in order that the city would have a sufficient quantity of free flowers with which to decorate their float.

This year's Rose Festival parade will have as its theme "Disneyland" which should afford limitless opportunity for clever float entries with the creation of one or many of Disney's personalities in flowers.

The Rose Festival, this year, will be held June 6 to 10 with the grand floral parade to be on Saturday, June 9. While the date is not too far distant, there is still time to prepare an entry fitting for Oregon's capital city. We cannot urge too strongly that one of energetic civic minded bodies undertake the project and begin preparations at once.

Fruitland WSWs Elects Officers
FRUITLAND — Mrs. Theodore Witham was hostess to the Women's Society of World Service at the church annex Thursday afternoon. Plans were made for some of the group to attend the Spring Rally at Lebanon.

Rev. Roger Swarin was in charge of the election of officers. Elected were: president, Mrs. Orville Reichfeld; vice-president, Mrs. Herbert Hilde; secretary, Mrs. Elwood Jennise; treasurer, Mrs. Roger Swarin.

PRATUM PROGRAM
PRATUM — A program is planned for Saturday night, March 24, at 8 o'clock by members of Pratum Community club in connection with the pie social.

Your Garden Notebook

LOOKING 'ROUND THE GARDEN

Crocus blooming
Daffodils budding
A few camellias survived the winter.
Daphne blooming
Flowering plum branches force into bloom indoors.

DO YOU KNOW?
Native American fruits include raspberries, blackberries, dewberries, strawberries, cranberry, blueberry, elderberry, gooseberry, mulberry, crabapple and persimmon?
The Mexican orange (*Choisya ternata*) is a handsome, tender shrub to 8 feet with fragrant, white flowers in early spring?
The *Chrysanthemum* genus includes such plants known as Arctic daisy, Pyrethrum, Marguerite, Ox eye daisy, Corn marigold and Feverfew?

Azaleas are not related to azaleas but are a low growing strain of profuse flowering chrysanthemums?

COMING EVENTS

- April 28-29 — Salem Garden Council Spring Garden Show, Izaak Walton Clubhouse, Salem.
- April 28-29 — Men's Garden Clubs of America, Northwest region, 10th Anniversary Conference, Salem.
- April 28-29 — Camas Washougal Men's Garden Club Spring Garden and Bulb Show, Legion Hall, Camas, Wash.
- May 10-13 — Lions Home Show, Eugene.
- May 30 — Fleet of Flowers, Depeo Bay.
- June 4-10 — Rose Festival, Portland.
- June 7-10 — American Rose Society National Convention, Multnomah Hotel, Portland.
- June 9-10 — Corvallis Men's Garden Club Rose Show, Corvallis.
- June 18-19 — Salem Rose Show, Salem.

Questions Answered

Q.—Daphne plant has spread so far it is crowding out other plants. It was also damaged by the freeze. How should it be pruned? D. W.

A.—From your description I assume the plant you have is daphne odora. It does not respond well to pruning so I would limit any pruning to removal of obviously dead wood and to keep the shrub within bounds. Partial pruning may be accomplished when you cut branches for the fragrant flowers, otherwise it is best to not prune until the bush is through flowering or you may be robbing yourself of bloom that you may want. Oftentimes, to keep the plant within bounds, it is advisable to provide some support for the heavy branches for as they continue to grow and become heavy they do spread laterally instead of making an erect bush.

Q.—How do you propagate *Dif. senbanchia*? E. S.
A.—These are propagated from cut sections of partially dormant stems that should be half buried, lengthwise in moist sand over bottom heat. These rooted cuttings may, then, be potted up, fed a liquid fertilizer and kept in a moist atmosphere until the desired size is reached. Temperature is between 70 and 80 degrees.

Q.—Is there not a native primrose in this area? Mrs. R. M.
A.—Several species of *Dodecatheon* are native to the Northwest. Since they all belong to the Primula family, these must be the plants you have in mind.

Q.—*Laurestinus* appears to have been completely winter-killed. I thought it was a hardy shrub. Can I prune to restore it now? W. S.
A.—*Laurestinus* is a plant with many idiosyncrasies. Too much water during the summer forces it into too much soft, vigorous growth so that it does tend to winter kill. Over watering may also have been the cause for so much mildew on your plant.

Q.—Where can I purchase a gardenia plant?
A.—It is possible a local florist may have one he would be willing to sell, though most of those grown by florists are too large for raising in the home as they raise them, primarily, for the bloom. Nearly every gardening magazine has advertisements of such plants for sale.

Q.—Is there any chance of chrysanthemum clumps that were left in the ground all winter producing shoots from which cuttings may be taken? B. H.
A.—Yes, it is quite possible. When the ground warms a little the roots may put out succulent

green shoots that are fine for making cuttings, even though the old woody stems are dead.

Q.—When should you start to spray roses? C. J.
A.—The rose spray program should begin just as soon as the roses start in to active growth. Such spraying is preventive as well as curative.

Q.—Are soil analysis clinics worthwhile? H. M.
A.—Yes. Any process that will determine the needed elements lacking in a soil and provide a recommendation for correction is most desirable. Such processes are provided through "clinics" by fertilizer producers, state colleges or by chemical soil analysis with kits which may be procured from your garden supply dealer. The amateur would do well to make a soil analysis before planting plants that require certain food elements in abundance. Failure to provide the element needed may result in the loss of a vulnerable plant. As a rule, one of the complete plant foods will suit the needs of most plants. But, there are times when continued use of high nitrogen fertilizers will cause a plant to develop an abnormally heavy foliage and stem growth, but no flowers. Such overbalances have often been reported to me and I generally recommend the feeding of superphosphate alone to bring the food relation in the soil back into balance to induce the formation of flower buds.

Growers of dahlias and potatoes sometimes notice a decrease in the size of tubers after the use of certain fertilizers. They, then, use an incomplete fertilizer of 0-10-10 or 0-14-10 to build up the phosphate and potash content of the soil to induce proper tuber and root formation.

Be sure and read the formula tags on fertilizers you buy to know which types are best suited to your plant's needs. A soil analysis of untried soil is well worth the investment which may be involved.

Q.—What is the best fertilizer ratio for tomatoes? S. W.
A.—The recommended formula by many growers is 3-10-5 plus plenty of humus.

Q.—Please recommend some plants for planting in a tulip bed to cover the unsightly tulip leaves as they die. Mrs. J. W.
A.—Try alysium, calliopsis, petunia, portulaca and verbena.

FRUITLAND PLAY
FRUITLAND — The Salem Civic Players will present the play, "The Black Derby," at Fruitland school Friday night, March 23, at eight o'clock.

STAR OF A MILLION COZY ROOMS...

Let our experts condition your home for perfect comfort with Wesix Wireheat. A million or more Wesix Wall Furnaces installed assures you highest quality.

Riches Electric Co.
236 State St. Phone 24156

NEW... Lower Prices for 1956

Scott's Seed for every Lawn

Choice of 3 blends to better your lawn, please the pocketbook.

That much admired lawn of sparkling green is your reward for planting Scott's Seed, leader in quality and performance for nearly half a century. Scott Lawns set a scene of thick, rug-like turf—a joy to the family.

Scott's LAWN SEED

DELUXE BLEND—For the ultimate in picture lawn beauty, lasting turf... millions of perennial seeds in each pound.
1 lb. \$1.50 5 lbs. \$7.25 25 lbs. \$34.50

SPECIAL BLEND—Will enhance your outdoor living with colorful grass, combines beauty and service.
1 lb. \$1.25 5 lbs. \$5.95 25 lbs. \$28.75

UTILITY BLEND—Quick and hardy grass coverage... a rugged can-take-it lawn that smiles at hard use.
1 lb. \$.95 5 lbs. \$4.65 25 lbs. \$22.50

ROSES... 3000 Plants, 72 Varieties

BRYDON'S

FREE ESTIMATES
On Floor Coverings
NORRIS-WALKER PAINT COMPANY
1710 Front Phone 4-2279

LAWN SAFE—grass loves it!

TURF BUILDER is the nutrient packed grassfood that brings about thicker, stronger, deeper rooted lawns. It costs so little per lawn... half as much TURF BUILDER does twice the job of ordinary fertilizers.

2,500 sq ft Box — \$2.95
11,000 sq ft Bag — \$7.85

8 ROSES \$2.98

Hardy 2 yr. old field grown and budded bushes

Selected from such prize winning varieties as PRESIDENT HOOVER, TALISMAN, GOLDEN DAWN, WHITE AMERICAN BEAUTY, K. A. VICTORIA, AMI QUINARD, RED RADIANCE, and others including a

YELLOW ROSE OF TEXAS
FREE with each order, 6 blooming size glads, mixed colors, and fragrant white GARDENIA BUSH.

Guaranteed to Grow and Please You!
Send no money, we ship COD \$2.98 plus usual postage and C.O.D. charges.
15 Bushes plus Free gifts \$5. 35 Bushes plus Free gifts \$10

TEXAS NURSERIES
Dept. 140 Winnboro, Texas

WESIX HEAT
In your BUILDING PLANS

Your new home will enjoy built-in comfort when we install modern Wesix automatic electric heat in every room. Being us your plans for an engineering estimate.

Electric Corp.
1270 Wilbur St. Phone 37878

KILLS MOSS
100% Granular
No Dust—No Odor
Lasts Longer

50 Lbs. \$2.85
100 Lbs. \$5.50

MIDDLE GROVE NURSERY
4930 Silverton Road
"WE GIVE 2-1/2" GREEN STAMPS"

PET SHOP PARADE

SPECIAL PURCHASE

The finest top quality, field-grown
2-year-olds guaranteed to bloom this Summer

ROSEBUSHES

An Assortment of Popular Varieties in Favorite Shades

2 for 99¢

These are Oregon's finest roses that will produce a radiantly blooming garden this summer.

FREE PARAKEET
with purchase of
POLISHED METAL CAGE

3.98 FOR BOTH

Imagine! You buy this roomy cage at a money-saving price and get its happy, healthy tenant at no extra charge. Easy to care for, easy to teach.

COME EARLY FOR YOURS!

See Our Complete Assortment of Flower and Vegetable Seeds

Sensational New Ideal Sure-Sprout Seed Starters
29¢ Box
Grow Your Own Plants — Just Add Water —

So Easy to Do All Your Shopping With Grant's Credit Coupons. Inquire Today

W. T. GRANT CO.
260 NO. LIBERTY