



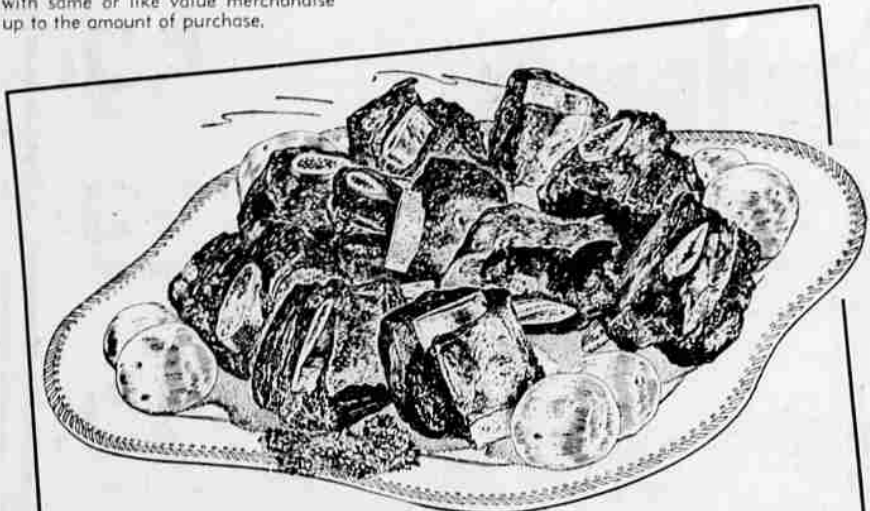
# WHY SETTLE FOR LESS THAN THE BEST

## HERE'S PROOF That SAFEWAY'S FINE MEAT COSTS NO MORE THAN ORDINARY MEAT

Safeway starts with the best—nothing less than "USDA CHOICE" grade beef and lamb—just the top grades, too, of pork, calf, and veal. Then Safeway makes this fine beef and lamb even better by its own scientific "aging" process which brings out peak flavor and tenderness. And, finally, before he weighs your purchase, your Safeway meat man trims off all excess bone, fat and waste to save money for you. Comparison proves—pound for pound, you get MORE good-eating meat for your money at your Safeway store.

Safeway's unconditional guarantee on every cut of meat Safeway sells means just this: Buy ANY cut of meat at ANY Safeway store. Cook it by your favorite method. Eat it. If, for any reason whatsoever, you are not pleased 100%, tell your Safeway meat man. He'll give back every penny you paid for the meat without fuss or quibble. You do not have to return any portion of your purchase. This guarantee is in keeping with our continuing desire to provide the finest meats in town for your table. So, why settle for less than the best. Be sure—with guaranteed meats from SAFEWAY!

**COUPONS ARE CASH AT SAFEWAY**  
We will redeem ALL coupons issued by the manufacturer or food retailers with same or like value merchandise up to the amount of purchase.



"USDA CHOICE" STEER BEEF

- SHORT RIBS** lb. **15<sup>c</sup>**
- Boiling Beef** "USDA Choice" Plate Cut Try an old-fashioned Stew lb. **15<sup>c</sup>**
- Beef Pot Roast** USDA Choice Arm Cut lb. **59<sup>c</sup>** Blade Cut lb. **45<sup>c</sup>**
- Beef Round Steak** USDA Choice Beef Aged for flavor lb. **79<sup>c</sup>**
- Standing Rib Roast** USDA Choice Tender lb. **69<sup>c</sup>**
- 100% Pure Ground Beef** Wonderful For Stew lb. **39<sup>c</sup>**

### GENUINE 1955 SPRING LAMB

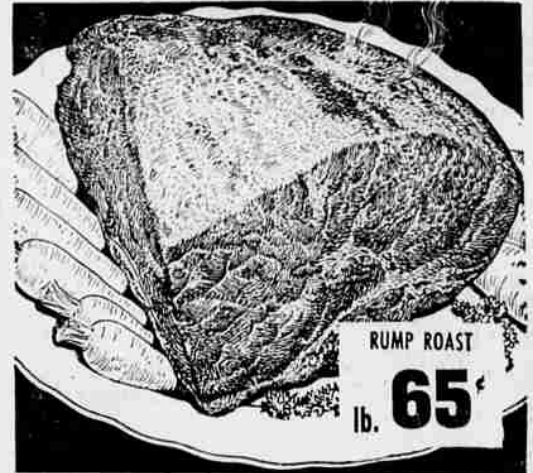


LEG OF LAMB  
lb. **75<sup>c</sup>**

- Small Loin Chops** Choice Center Cut lb. **95<sup>c</sup>**
- Rib Lamb Chops** USDA Choice Lamb lb. **75<sup>c</sup>**
- Shoulder Roast** Choice Square Cut lb. **49<sup>c</sup>**
- Breast of Lamb** Choice Lamb For Stew lb. **19<sup>c</sup>**

Time again to enjoy the wonderful goodness of spring lamb—the meat that's famous for rich, full flavor and delicate texture. It's featured this week at Safeway—Spring Lamb at its very best. You see, we sell only "USDA CHOICE" grade—and we prepare this fine meat for market with special care so it reaches you at its peak of tenderness and flavor.

### TENDER-JUICY CALF VALUES



RUMP ROAST  
lb. **65<sup>c</sup>**

- Small Loin Chops** Tender Center Cut lb. **85<sup>c</sup>**
- Shoulder Roast** Mealy Blade Cut lb. **49<sup>c</sup>**
- Shoulder Roast** Tender Arm Cut lb. **55<sup>c</sup>**
- Breast of Veal** Wonderful For Stew lb. **19<sup>c</sup>**

Enjoy Calf from Safeway to your heart's content. In one bite you'll discover that he is Calf at its very best! And all cuts are from top USDA grades of Calf—pre-trimmed, of course, so you pay for no excess fat or bone. It's perfect eating calf—tender, juicy, flavorful.

## SMOKED PICNICS

These are fancy, sugar-cured pork shoulders with the shanks cut short to give you a maximum of meat and a minimum of waste. You'll enjoy the wonderful ham-like flavor. Delicious served hot or cold.

lb. **45<sup>c</sup>**



**SLICED BACON**  
Sugar Cured Standard Pack lb. **49<sup>c</sup>**

**BACON SQUARES**  
Real Smoked Flavor Excellent for Seasoning lb. **33<sup>c</sup>**

**POULTRY**

- Whole Fryers** Fresh Drawn lb. **59<sup>c</sup>**
- Fresh Fryers** Cut-up Pan-Ready lb. **65<sup>c</sup>**
- Fresh Fowl** Cleaned Cut-up lb. **55<sup>c</sup>**
- Frozen Fryers** Manor House lb. **65<sup>c</sup>**

**COTTAGE BUTTS**  
Boneless Smoked 1½-2½ lbs. Cello Pack lb. **89<sup>c</sup>**

**SALT PORK**  
Wonderful for Flavor Economical Seasoner lb. **39<sup>c</sup>**

**SEA FOODS**

- Fillet of Sole** Captain's Choice 1-lb. Pkg. **55<sup>c</sup>**
- Fillet of Cod** Captain's Choice 1-lb. Pkg. **39<sup>c</sup>**
- Fillet of Perch** Captain's Choice 1-lb. Pkg. **39<sup>c</sup>**
- Halibut Steak** Captain's Choice lb. **55<sup>c</sup>**

Grocery prices in this ad are in effect now at Safeway in Salem. Meat and produce prices effective through Sunday, July 24. We reserve the right to limit quantities. No sales to dealers on their representatives.



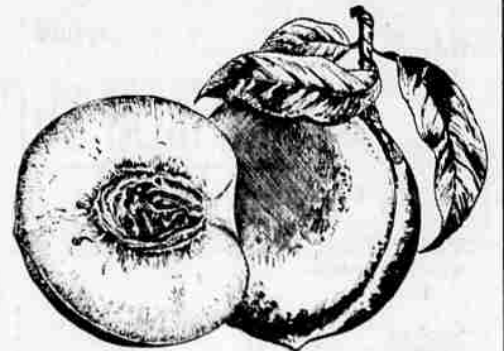
## SAFEWAY GARDEN - FRESH PRODUCE

Tree-ripened, Hi-colored, California Elberta Freestone

## PEACHES

Safeway peach experts have selected the pick of the California crop especially for you. Each of our golden-yellow Elbertas (Freestones) has ripened on the tree to full-developed sweet flavor. Each is crammed with juice, solid-fleshed, unblemished. For canning, for fresh eating... you can't do better than these top-quality Elbertas.

lb. **17<sup>c</sup>**



21-Pound Lug \$2.98

## WATERMELON

Red Ripe Sweet Meated By the piece lb. **5<sup>c</sup>** Whole Melons lb. **5<sup>c</sup>**

- Green Beans** Local Wonders 2 lbs. **35<sup>c</sup>**
- Pineapple** Fresh Hawaiian Sugar-Sweet lb. **15<sup>c</sup>**
- Head Lettuce** Crisp Heads lb. **10<sup>c</sup>**
- Cucumbers** For Summer Salads lb. **15<sup>c</sup>**
- Juicy Lemons** Famous Sunkist lb. **19<sup>c</sup>**
- Nectarines** Flavor Packed From California lb. **35<sup>c</sup>**
- Yellow Apples** New Crop Transparents lb. **19<sup>c</sup>**
- Fancy Bananas** Fully Ripe lb. **19<sup>c</sup>**
- New Potatoes** No. 1 Premium 10-lb. 4 to 9-oz. Avg. Bag **55<sup>c</sup>**
- New Potatoes** Select Premium 8 to 15-oz. Avg. lb. **79<sup>c</sup>**

Sweetest Value in Town **CANTALOUPE** lb. **13<sup>c</sup>**

Northwest Moorpack **APRICOTS** 12-Pound Flat \$1.59 lb. **15<sup>c</sup>**

Sweet Tender Golden Kernels **FRESH CORN** 6 ears **39<sup>c</sup>**

Famous Thompson Variety **SEEDL'S GRAPES** lb. **29<sup>c</sup>**