

TELE-VIEWS

Radio-Television

TUESDAY ON KPTV:

10:00 a.m. **Welcome Travelers, 4:30**—Tommy Bartlett greets Chicago visitors. **Delayed Trout Opening—Why, 6:15**—Rudy Lachenmeier moderates discussion.

Strange Adventures, 6:30—"Sealed Orders." **Liberace, 7**—Liberace and loved, Liberace plays and sings: "Almost like Being in Love," "Rustle of Spring," "April and You," "Takes Two to Tango," "Ritual Fire Dance," and "Boogie Woogie Variations."

Dinah Shore Show, 7:30—Delectable Dinah, singing the latest and best.

Fireside Theater, 9—"The Desert Answer," tells of conflict between man dedicated to aiding Arizona Indians, and a wife who longs to return East. A small Indian lad provides the "desert answer."

Circle Theatre, 9:30—"Fugitive," with Dolly Haas and Anthony Perkins, tells of man hiding in orphanage, from the law.

Nite Owl Theater, 11:01—"Tomboy," starring Jack Moran, Marcia Mae Jones, Grant Withers.

Madri Gras—Rex and Comus Balls, 12—Traditional New Orleans carnival that brings to close glittering Madri Gras.

TUESDAY ON KOIN-TV:

3:15 p.m., **Armchair Theatre**—"Swing Your Partner," starring Vera Vague and Ranson Sherman.

7 p.m., **Range Rider**—"Renegade Ranch."

7:30 p.m., **Hollywood Music Hall**—In the guest spot is well-known Hawaiian guitarist Sam Cokey, bringing songs of Pacific Islands, "Sweet Leland" and "Tahiti, My Island." Victor Young will lead his Singing Strings in the theme from his own score of the motion picture "The Quiet Man." Lucille Norman has chosen "Manhattan" for her opening number.

9 p.m., **Captured**—"Michigan Telegraph Swindle," starring Chester Morris.

10:00 p.m., **Danger**—"Shorty," a dramatic story of an ex-convict who proves his courage.

8:30 p.m., **Suspense**—A country doctor's wife, ill at home, tries frantically to contact a television station when she spots a man she knows to be dangerously delirious at a televised testimonial dinner, in "Death on the Screen," on "Suspense."

11 p.m., **Showtime on Six**—"Square Dance Jubilee," starring Don Barry, Mary Beth Hughes, Spade Cooley and His Band.

WEDNESDAY ON KPTV:

Ding Dong School, 10—Monday through Friday nursery school of television, conducted by Dr. Frances Horwich.

What's Cooking, 10:30—Gracefully, graciously, Barbara Angell teaches food preparation. Baked peaches with sour cream or ice cream is dessert, after fish and chips, for Wednesday.

Hawkins Falls, 11—Monday through Friday drama of life in typical American town.

Friends of the Family, 11:30—Daring Mike Davenport, the boy un-abashed by show window television, in another interesting appearance.

Matinee Theater, 1—"Unforgotten Crime."

On Your Account, 2:30—Win Elliot emceeing an audience participation show.

Howdy Doody, 5—Puppet star and Clarabell. Stars Bob Smith, Marvin Miller, Storyteller, 6:30—Miller dramatizes the discovery of aspirin; the result of a chemist's mathematical error.

Coke Time, 7:30—Dinah Shore and Eddie Cantor, guests of Eddie Fisher. Dinah to sing "Dearie" with Fisher, who will also sing "It's a Long Way from Broadway," and his latest recording, "A Girl, A Girl."

Married Joan, 8—The big family question, "Who dented the fender?" gets unique settlement, when Joan and Brad decide to divide use of the car, and Joan cheats, a bit, on the bargain. Result, big dent.

Kraft Theater, 9—"Cuckoo Clock" tells wistfully of old German refugee trying to fit into a new way of life. Cast includes Hans Schumm, Gaby Rogers. . . . Story of his daughter and her love—which her father could not accept.

This Is Your Life, 10—Dramatization of the years that went before, in someone's life. Ralph Edwards, emcee.

Calvadeo of America, 10:30—"Absent Host."

Eleventh Hour Headlines, 11—Brief late news.

Nite Owl Theater, 11:01—"Born to be Wild," starring Ralph Byrd, Ward Bond and Dorris Weston.

WEDNESDAY ON KOIN-TV:

3:30 p.m., **Armchair Theatre**—"Orphans of the Street," starring June Storey and Ralph Morgan.

5:30 p.m., **Kit Carson**—Kit Carson switches identification papers with a dead killer in order to ferret out the gunman's associates in "The Adventures of Kit Carson." Bill Williams is starred in the title role, and Don Diamond plays his sidekick, El Toro.

6:45 p.m., **This Is Your Music**—Helen Parrish and Dick Stewart visit a lighthouse this week, and are greeted by Katie Lee, Bill Clauson and Rhye Williams. Katie and Bill sing amusing sea chauties as well as ballads that tell of the lonely life of a lighthouse keeper. "Elystone Light" and the story of the phantom ship "Gundramar" are two of the fantasies set to music.

7 p.m., **Blue Ribbon Fight**—George Johnson, of Trenton, the New Jersey State middleweight champion, faces Moses Ward, of Detroit, at the Detroit Olympia. Both Johnson and Ward are free-swinging club-fighter types. Johnson who has scored 20 kayos in 29 starts, makes his first national television start.

10 p.m., **Wrestling from Hollywood**—In the Semi-Main Event of "Wrestling from Hollywood," Wild Red Berry grapples with Cleveland's own Billy Varga. Leo Garibaldi and that strong Nobleman Lord Carleton meet in the ring for the Main Event. Dick Lane will be mikeside to call the holds of this exciting event.

11 p.m., **Showtime on Six**—"Charlie Chan at the Wax Museum," starring Marguerite Chapman and Mare Lawrence.

Building Outlook Indicates Slight Gain

LOS ANGELES (U) — The Associated General Contractors of America, now in convention here, has announced the results of a na-

tionwide construction survey. Its conclusions:

Highway construction will increase markedly. Heavy engineering projects will decline. Building construction will gain moderately.

The forecast Monday, covering the next six months, also included regional reports:

Far West — Highway jobs will increase but heavy construction will be hard hit.

HEAR
EDDIE FISHER

TONIGHT
KSLM 6:15 P. M.

YOUR
COCA-COLA BOTTLER

TV Service Co.

Highly Trained Technicians
Best Electronic
Test Equipment
Bonded & Insured Co.

TV Service Co.
1410 S. 12th Ph. 4-5512

Does Your Present TV Service Meet with Your Approval?

IF NOT—DIAL 2-1913
WITH COMPLETE CONFIDENCE

WE SERVICE ALL MAKES OF TELEVISION
We don't have radio men . . . we have trained television technicians . . .

WITH 7 OR MORE YEARS EXPERIENCE

VALLEY TV CENTER

2303 Fairgrounds Road Phone 2-1913

SALES	SERVICE	INSTALLATION
Motorola Hoffman Dumont Packard-Bell	All Makes and Sizes	All Types Free Estimates

On Television
KPTV (27) - KOIN-TV (6)
UHF VHF

TUESDAY

10:00 a.m. KPTV—Ding Dong School
10:30 a.m. KPTV—What's Cooking?
10:45 a.m. KPTV—What's Cooking?
11:00 a.m. KPTV—Hawkins Falls
11:15 a.m. KPTV—Three Steps to Heaven
11:30 a.m. KPTV—Friend of Family
11:45 a.m. KPTV—Friend of Family
12:00 a.m. KPTV—Bride and Groom
12:15 p.m. KPTV—TBA
12:30 p.m. KPTV—TBA
1:00 p.m. KPTV—Bob Crosby
1:15 p.m. KPTV—Matinee Theater
1:30 p.m. KPTV—Love of Life
1:45 p.m. KPTV—Matinee
2:00 p.m. KPTV—Matinee
2:15 p.m. KPTV—Mr. Moon
2:30 p.m. KPTV—The Toy Maker
2:45 p.m. KPTV—Cartoon Time
3:00 p.m. KPTV—Howdy Doody
3:15 p.m. KPTV—Saddle Pals
3:30 p.m. KPTV—Bar 27 Corral
3:45 p.m. KPTV—Wilderness Hawk
4:00 p.m. KPTV—TBA
4:15 p.m. KPTV—Mr. Weatherman
4:30 p.m. KPTV—TBA
4:45 p.m. KPTV—TBA
5:00 p.m. KPTV—TBA
5:15 p.m. KPTV—TBA
5:30 p.m. KPTV—TBA
5:45 p.m. KPTV—TBA
6:00 p.m. KPTV—TBA
6:15 p.m. KPTV—TBA
6:30 p.m. KPTV—TBA
6:45 p.m. KPTV—TBA
7:00 p.m. KPTV—TBA
7:15 p.m. KPTV—TBA
7:30 p.m. KPTV—TBA
7:45 p.m. KPTV—TBA
8:00 p.m. KPTV—TBA
8:15 p.m. KPTV—TBA
8:30 p.m. KPTV—TBA
8:45 p.m. KPTV—TBA
9:00 p.m. KPTV—TBA
9:15 p.m. KPTV—TBA
9:30 p.m. KPTV—TBA
9:45 p.m. KPTV—TBA
10:00 p.m. KPTV—TBA
10:15 p.m. KPTV—TBA
10:30 p.m. KPTV—TBA
10:45 p.m. KPTV—TBA
11:00 p.m. KPTV—TBA
11:15 p.m. KPTV—TBA
11:30 p.m. KPTV—TBA
11:45 p.m. KPTV—TBA
12:00 a.m. KPTV—TBA

11:00 a.m. KPTV—Hawkins Falls
11:15 a.m. KPTV—Three Steps to Heaven
11:30 a.m. KPTV—Friend of Family
11:45 a.m. KPTV—Friend of Family
12:00 a.m. KPTV—Bride and Groom
12:15 p.m. KPTV—TBA
12:30 p.m. KPTV—TBA
1:00 p.m. KPTV—Bob Crosby
1:15 p.m. KPTV—Matinee Theater
1:30 p.m. KPTV—Love of Life
1:45 p.m. KPTV—Matinee
2:00 p.m. KPTV—Matinee
2:15 p.m. KPTV—Mr. Moon
2:30 p.m. KPTV—The Toy Maker
2:45 p.m. KPTV—Cartoon Time
3:00 p.m. KPTV—Howdy Doody
3:15 p.m. KPTV—Saddle Pals
3:30 p.m. KPTV—Bar 27 Corral
3:45 p.m. KPTV—Wilderness Hawk
4:00 p.m. KPTV—TBA
4:15 p.m. KPTV—Mr. Weatherman
4:30 p.m. KPTV—TBA
4:45 p.m. KPTV—TBA
5:00 p.m. KPTV—TBA
5:15 p.m. KPTV—TBA
5:30 p.m. KPTV—TBA
5:45 p.m. KPTV—TBA
6:00 p.m. KPTV—TBA
6:15 p.m. KPTV—TBA
6:30 p.m. KPTV—TBA
6:45 p.m. KPTV—TBA
7:00 p.m. KPTV—TBA
7:15 p.m. KPTV—TBA
7:30 p.m. KPTV—TBA
7:45 p.m. KPTV—TBA
8:00 p.m. KPTV—TBA
8:15 p.m. KPTV—TBA
8:30 p.m. KPTV—TBA
8:45 p.m. KPTV—TBA
9:00 p.m. KPTV—TBA
9:15 p.m. KPTV—TBA
9:30 p.m. KPTV—TBA
9:45 p.m. KPTV—TBA
10:00 p.m. KPTV—TBA
10:15 p.m. KPTV—TBA
10:30 p.m. KPTV—TBA
10:45 p.m. KPTV—TBA
11:00 p.m. KPTV—TBA
11:15 p.m. KPTV—TBA
11:30 p.m. KPTV—TBA
11:45 p.m. KPTV—TBA
12:00 a.m. KPTV—TBA

2:00 p.m. KPTV—Matinee
KPTV—Double or Nothing
3:00 p.m. KPTV—On Your Account
KPTV—Strike It Rich
3:00 p.m. KPTV—Kate Smith
KPTV—Garry Moore
3:30 p.m. KPTV—Kate Smith
KPTV—Arm Chair Theater
4:00 p.m. KPTV—Welcome Travelers
KPTV—Arm Chair Theater
4:30 p.m. KPTV—The Toy Maker
KPTV—Mr. Moon
4:45 p.m. KPTV—The Toy Maker
KPTV—Cartoon Time
5:00 p.m. KPTV—Howdy Doody
KPTV—Saddle Pals
5:30 p.m. KPTV—Bar 27 Corral
KPTV—Wilderness Hawk
6:00 p.m. KPTV—TBA
KPTV—Mr. Weatherman
6:00 p.m. KPTV—Name's Same
KPTV—Mr. Weatherman
6:15 p.m. KPTV—Name's Same
KPTV—Photo Quiz

4:30 p.m. KPTV—Storyteller
KPTV—Doug Edwards
4:45 p.m. KPTV—World Review
KPTV—This Is Your Music
5:00 p.m. KPTV—Simon Green
KPTV—Flavia
7:30 p.m. KPTV—Coke Time
KPTV—Patsy
7:45 p.m. KPTV—News Caravan
KPTV—Star Time
8:00 p.m. KPTV—Married Joan
KPTV—Arthur Godfrey
8:30 p.m. KPTV—My Little Margie
KPTV—Arthur Godfrey
9:00 p.m. KPTV—Kraft Theater
KPTV—Strike It Rich
9:30 p.m. KPTV—Kraft Theater
KPTV—Live Got a Secret
10:00 p.m. KPTV—This Is Your Life
KPTV—Wrestling
10:30 p.m. KPTV—Cavalade America
KPTV—Wrestling

11:00 p.m. KPTV—11th Hour News
KPTV—Showtime on Six
11:01 p.m. KPTV—Nite Owl Theater

ADENAUER URGES PATIENCE
BONN, Germany (U) — West German Chancellor Konrad Adenauer called on the United States Tuesday for "patience and forbearance" if plans for European unity are further delayed. Adenauer told a group of visiting American editors he is "thoroughly convinced" that the West European nations will agree to unite

Service
YOUR TELEVISION ?
Call the number below for prompt, economical service!
PHONE.....3-9191
Sears Roebuck & Co.

INSIST THAT YOUR MEDICAL and HOSPITAL COVERAGE PLAN MEETS THESE TESTS

Oregon Physicians' Service invites your critical comparison of its SERVICE Plan with other kinds of health insurance.

The questions on the billboard are the kind you should ask—before you buy health protection. 130,000 Oregonians have already done this—and they are now members of OPS. Why don't you join them?

Send coupon for more information.



- Is it *Non Profit*—are your dues spent for services?
- Is it *Approved* by responsible agencies; your State Medical Society; American Medical Association; Blue Shield?
- Does it provide *Professional Services*—or merely make *Cash Allowances* to help defray medical costs?
- Do you have to fill in *Claims Forms*—or does it pay doctors and hospitals direct?
- Does it have *Age Limits* or require *Physical Exams*?
- Does it allow *Free Choice of Doctor*?
- Does it protect you outside Oregon?
- Does it have a reputation for *Fair Dealing* in Claims settlement?
- Is it supervised by the Oregon State Insurance Department?



OREGON PHYSICIANS' SERVICE
Oregon's BLUE SHIELD plan

OPS Claims and Sales Offices in Portland-Salem-Astoria-Medford-Pendleton-Roseburg

SPONSORED AND APPROVED BY THE OREGON STATE MEDICAL SOCIETY

Group Life and Disability Payment Insurance can be combined with an OPS Medical and Hospital service plan... a "Package" that can't be beat!

TV TROUBLES?

Technicians on Duty
Till 9:30 p.m. Daily

TELEVISION SERVICE
1410 S. 12th Ph. 45512

OREGON PHYSICIANS' SERVICE
619 S. W. Eleventh, Box 1071, Portland 7, Oregon

Please send me information about your MEDICAL and HOSPITAL SERVICE PLANS

GROUP PLAN (There are at least 8 employees where I work)

NON-GROUP (Individual)

Name _____

Company _____

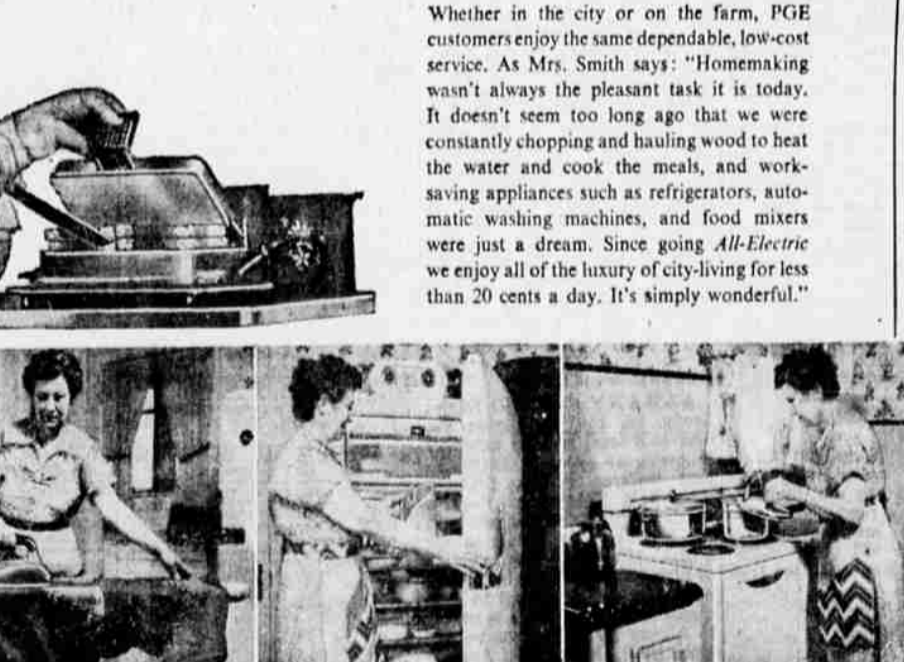
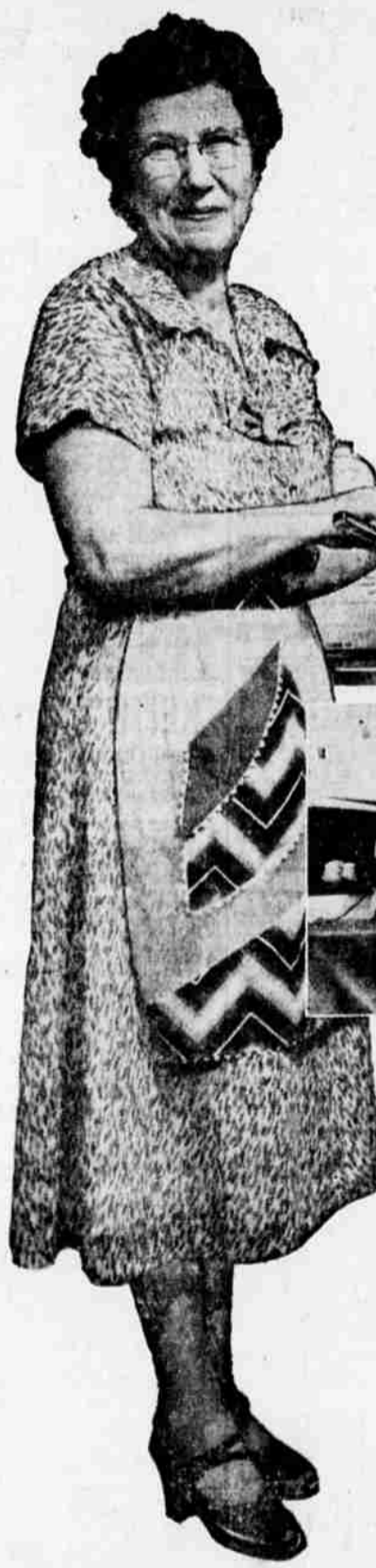
Address _____

City _____

"PGE electricity is my biggest bargain . . ."

Says Mrs. George M. Smith, Route 1, Box 190, Boring, Oregon

"We enjoy complete electrical living on our farm for LESS THAN 20c A DAY"



Whether it's toasting sandwiches or ironing clothes, PGE electricity helps Mrs. Smith with these tasks for a little over a penny an hour.

Fresh fruits, vegetables and milk from the Smiths' farm stay fresh and tasty in their modern electric refrigerator for just a penny's worth of electricity a day.

Cooking and baking is a favorite pastime with Mrs. Smith. Her clean, safe, dependable electric range operates for an average of just 5 cents a day.

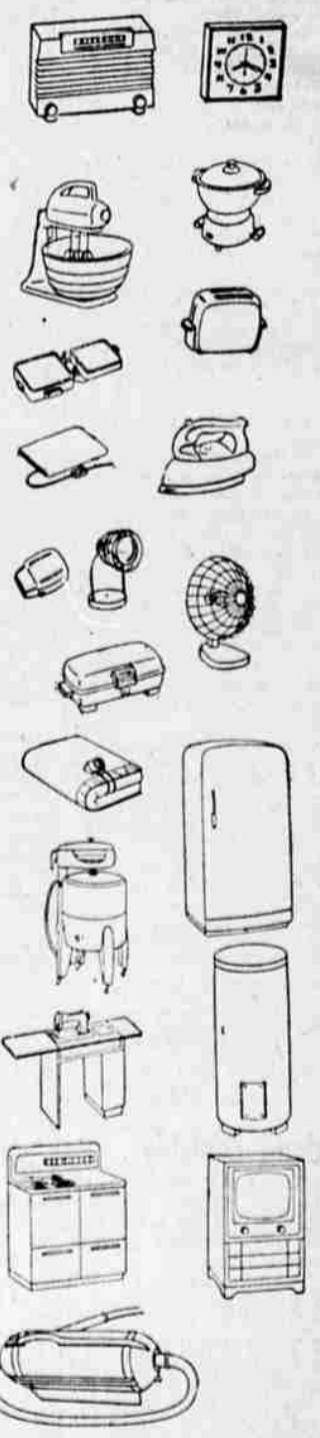
Like the rest of you, the Smiths use more and more electricity every year as they add new appliances—yet their cost per kilowatt hour has gone down and down. Back in 1924 when the Smiths first became a PGE customer the average use of electricity was 40 kilowatt hours—mostly for lights—and bills averaged \$2 per month (which was 5c per kilowatt hour). Now the Smiths use an average of 453 kilowatt hours per month—electricity which helps them cook, sew, wash,

iron, mix, preserve food, heat water, and do a host of other things. For these 453 kilowatt hours they pay \$5.92 per month (which is just slightly over 13¢ per kilowatt hour).

Think of it—just a cent-and-a-quarter per kilowatt hour for a full-time servant that never eats or never sleeps . . . is always ready at a flip of a switch to do your bidding.

Yes, check and see—and you'll agree—PGE ELECTRICITY is your biggest bargain . . . Keep it working for you!

The Smiths have these time and work-saving electric appliances working for them



Oregon's pioneer electric utility

PORTLAND GENERAL ELECTRIC COMPANY