

'Electra' Opens At WU Tonight

Willamette university's production of the Greek tragedy "Electra," under the direction of Robert Putnam, opens Thursday on the Waller hall stage for a three-night run. The curtain will raise at 8:15 p.m.

"Electra" is the second major presentation by the university drama department this season and first Greek tragedy to be produced by the Willamette players in over 20 years.

First night audiences will see a special adaptation of Sophocles' "Electra," taken from eight different translations and transcribed for the Willamette presentation by Robert Putnam, director of theater. The entire play adheres as closely as possible to the original Greek production.

A full cast of 19 actors, costumed in original creations by Marquerite Dawson, senior from Longview, Wash., will enact the plot of hate, murder and revenge. Elizabeth Winship, Arlington, Calif., and Carl Ritchie, Salem, are starred in the tragedy. Other principle players are Sheila Ryan Lane, Clarine Woolery and Bruce Fountain, all of Salem; David Finlay, Silverton; and William Withrud, Richland, Wash.

99 Men Attend 90 and 9 Club

Coincidentally there were 99 men who sat down to dinner at the North Willamette district meeting of the 90 and 9 at the Liberty Christian church early this week.

Following the dinner a song service was led by Rev. Wayne Bryant of the Liberty church and a business session with Harry Vedder of the Silverton Christian church presiding.

Alger Fitch, minister of the Milwaukie Christian church, guest speaker, said the way to be great is to do "little things for little people."

The program included music by a string quartet from the Salem First Baptist church consisting of Vern Moore, Gerard Brown, Armin Byser and Rodney Schmidt.

Pope Sleeps Fairly Well

VATICAN CITY (AP) — Ailing Pope Pius "slept fairly well" during the night and his general condition early today showed a slight improvement, the Vatican press office announced.

Other Vatican sources earlier had described the Pope's general condition as still stationary. Severe attacks of hiccuping had kept him from sleeping and severely weakened him during the first weeks of his month-long illness.

The pontiff who will be 78 next Tuesday is believed to be suffering from gastritis but his inability to retain the barium solution necessary for X-ray examination has prevented a complete diagnosis. He is on a semi-liquid diet and is able to leave his bed for only brief periods.

Warming Trend Seen in Weather

By THE ASSOCIATED PRESS Fair mild weather prevailed over most of the southern half of the country Thursday but there were some wet spots in the east and central part of the country.

Light snow fell in the Dakotas, parts of Nebraska, northern Michigan and south of Lakes Erie and Ontario. Rain continued along the Atlantic seaboard from North Carolina to Maine and in Western Washington.

A warming trend was reported over most of the country except the northern tier of states from Minnesota westward to Washington. Cooler air from Canada lowered temperatures in the northern region 10 to 25 degrees. Readings rose from 5 to 15 degrees over the southern plain northeastward into New England.

Summer-like temperatures were reported in Southern California and Arizona Wednesday with a top of 91 at Yuma, Ariz., and 89 at Los Angeles.

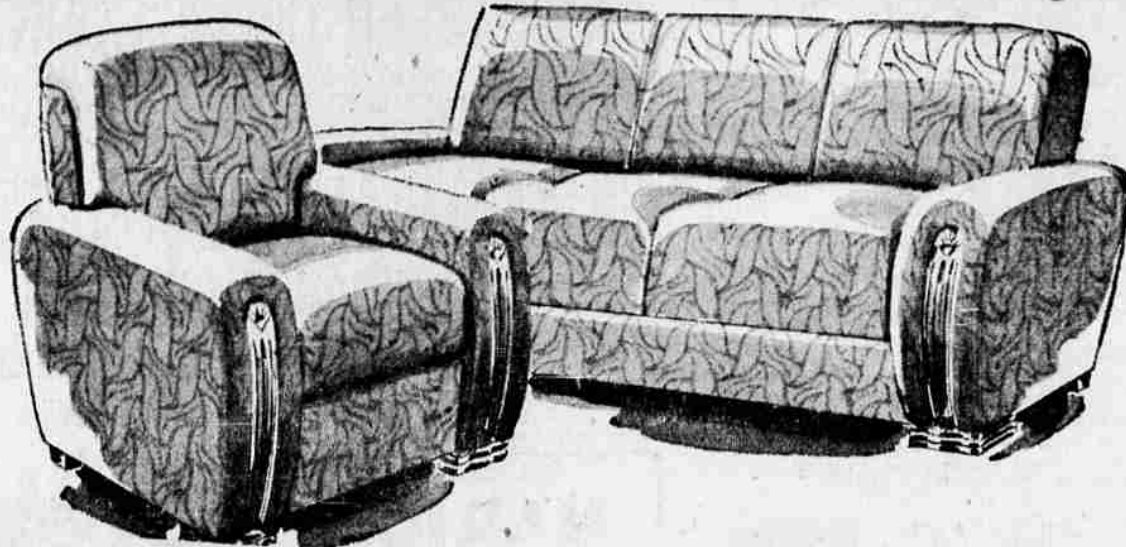
Co-rec Club to Have Roller Skating Party

Co-Rec club is going to Lebanon this Friday night to a roller skating party. Free bumps and spills, as well as lots of fun, will characterize the evening.

The usual dinner at the Y. W. will not be served this time. Those coming should eat first or bring a lunch and be at the Y. W. C. A. on South Winter Street by 7 p.m. for transportation. All young, single people are invited to come.

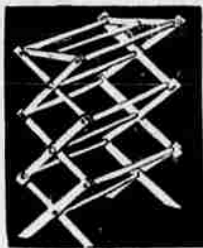
WE GIVE AND REDEEM
2.5¢ GREEN STAMPS

FEBRUARY HOME FURNISHING SALE



Special! \$219.95 Value—2-Pc. DAVENO and CLUB CHAIR SET
This massive set is a fitting value of our great February sale! Lovely frieze cover in either Kelly or olive green, coil spring construction, no-sag reinforced base, large storage compartment, makes into a large bed. A lovely, practical set at a huge savings.
159⁹⁵
Furniture—Second Floor—Court Street

REG. 2.50, CLOTHES DRYER



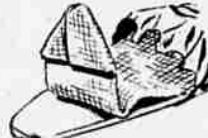
1.49

Collapsible in door dryer provides 30 feet of drying space. Smooth, natural wood; folds compactly for storing.



SLEEVE BOARD \$1.99

Well padded and covered top and bottom! Makes easy work of hard-to-get-at sleeves.



PAD, COVER SET \$1.49

Made to fit Mel-L-Top ironing tables. Well-cushioned waffle weave pad; muslin cover. Reg. 2.69 value!

REG. 5.95 25-GAL. GARBAGE CAN



4.88

Big savings on this durable can with a big 25-gal. capacity. Durable sheet metal; leak-proof, rust-resistant.



VISIT THE NEW G. E. COFFEE BAR THIS WEEK
Trained G.E. demonstrator will give you a tasty treat! Stop and enjoy a cup of coffee made in this new G.E. coffee maker.

DOWNSTAIRS—COURT STREET
here it is! the new coffee maker that makes your coffee the same "BREW" morning after morning!
SENSATIONAL . . . NEW!

coffee maker!

29⁹⁵

General Electric's newest appliance makes coffee to your personal taste perfectly, automatically, every time. Easy-as-pie to use . . . just put in desired amount of coffee and water, set the control—coffee is ready to serve in a jiffy. Makes 2 cups in 4 minutes; 9 cups in 14½ minutes. Big capacity, too: 2 to 9 cups of percolator coffee, up to 14 cups of instant coffee!

NO DOWN PAYMENT on our approved credit as little as \$5 a month

HOUSEWARES—DOWNSTAIRS—COURT STREET

SHOP ROBERTS FRIDAY NIGHTS TILL 9

Roberts Bros.

LIBERTY STREET — COURT STREET
JUST ARRIVED!

TODAY'S BIGGEST TV VALUE!

PHILCO

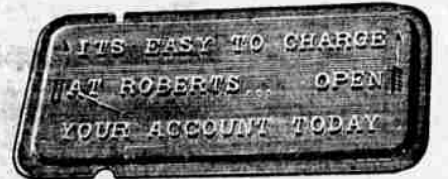


PHILCO 4003, BIG 21" TABLE MODEL

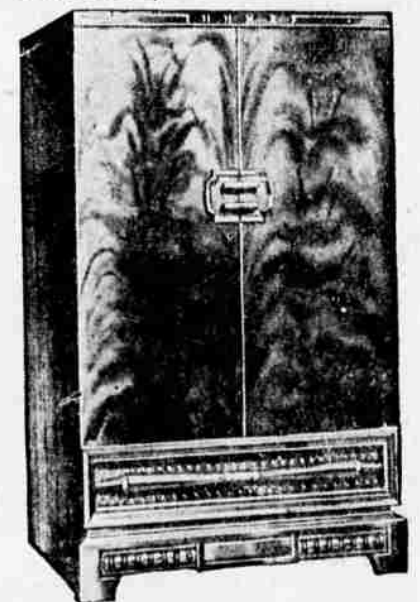
299.95

Just released! Philco's newest 1954 TV set that gives you the closest-to-life picture you ever saw with less effort, less tuning thanks to the simplified controls. This table model comes in a raised-grain Ebony finish—and as in all Philco sets, the glass covering picture tube is removable for ease in cleaning.

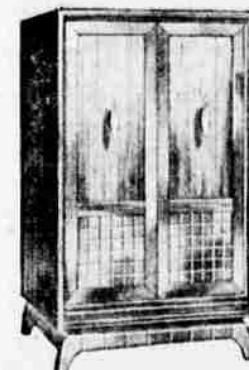
COMPLETE WITH ALL CHANNEL 82-STATION SELECTOR



SPECIAL TRADE-IN ALLOWANCES ON THESE



PHILCO 4304—YOUR OLD RADIO IS WORTH A VERY SUBSTANTIAL TRADE-IN VALUE ON THIS DEMONSTRATOR MODEL. 534.95



PHILCO 4306 YOUR OLD RADIO OR PHONO IS WORTH A VERY SUBSTANTIAL TRADE-IN VALUE ON THIS DEMONSTRATOR MODEL. 564.95

Roberts TV, Downstairs

NO DOWN PAYMENT
On Our Approved Credit
As long as 24 months to pay