

PENNEY'S
ALWAYS FIRST QUALITY!
SALEM, OREGON

JOB TESTED WORK CLOTHES

AT WORK... AT HOME...

SUPER TOUGH! 11 oz. DENIM

Snug Fitting WESTERN Blue Jeans

2.79
SIZES 29-42

The heaviest denim made—means extra long wear! Heavy-duty zipper or button fly front!
MAIN FLOOR *Maximum shrinkage 1%

- Five heavy-duty pockets!
- Copper-plated rivets for extra strength!
- Truly authentic western cut!
- Sanforized* for permanent fit!
- Extra-strong orange stitching throughout!



JOB TESTED by millions of working men every day!



PENNEY'S BIG MAC COMBED COTTON MATCHED SETS

Twill Pants **3.98**

Shirts to Match . . . 2.49
Long wearing government specification 2-ply army twill. Full cut to rigid specifications. Sanforized* and vat dyed. Break resistant buttons and tear resistant sleeve facing.
*Maximum shrinkage 1%
MAIN FLOOR



PENNEY'S BIG MAC WORK SUITS **4.49**
SIZES 34-50

Penney's own famous one piece heavy duty work suit! Protects the whole body from dirt, grease; comes in a permanent Sanforized* fit! Easy to get in and out of, because of a heavy duty, rust resistant two-way zipper! Plenty of roomy pockets for tools! Stripe, Herringbone, and Texas Green.

MAIN FLOOR

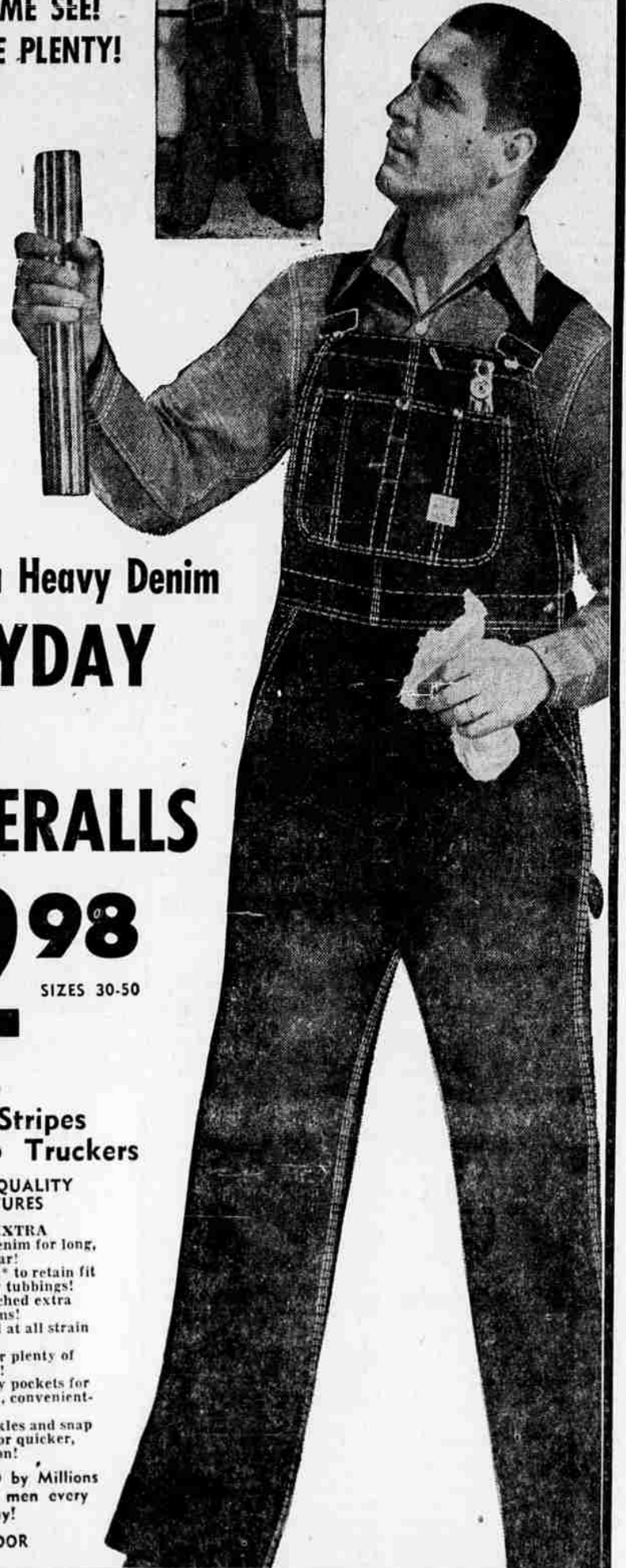
See Our Work Clothes Windows!

AMERICAS GREATEST WORK CLOTHES VALUES!

COME SEE! SAVE PLENTY!



See A Pr. OF Size 100 Pay Day Overall On Display!



Extra Heavy Denim

PAYDAY BIB OVERALLS

2.98
SIZES 30-50

- Blue
- Stripes
- Truckers

EXTRA QUALITY FEATURES

- Durable, EXTRA HEAVY denim for long, rugged wear!
- Sanforized* to retain fit after many tubbings!
- Triple stitched extra strong seams!
- Bar laced at all strain points!
- Full cut for plenty of free action!
- Heavy duty pockets for every need, conveniently placed!
- Parva buckles and snap fasteners for quicker, easier action!

JOB TESTED by Millions of working men every day!

MAIN FLOOR



Men's Work Bandanas **15c** Ea.

Cotton bandana handkerchiefs in large (18"x18") sizes. Highly absorbent, durable cotton for man-size jobs. Choose either red or blue in colorful patterns.
MAIN FLOOR



Men's Rugged Work Socks **29c**
SIZES 10-13

Nylon reinforced heel and toe for extra long durable wear! Continuous 100% cotton knit throughout eliminates seam! Elastic top means snug, slip-resistant wear.
MAIN FLOOR



Men's Rugged Work Gloves **98c** Pr.

Extra heavy duty features include all leather thumb, knuckle strap and finger tips for reinforced strength! Colorful stripe canvas back adds sturdiness! Gloves have elastic back for snug fit.
MAIN FLOOR

FINAL WINTER CLEANUP . . .

Going... Going... GONE!
SPECIAL SAVINGS!
We must make room for new merchandise!

ONE GROUP MEN'S Topcoats **\$19** and **\$29**
MAIN FLOOR

ONE GROUP MEN'S SUITS BROKEN LOTS AND SIZES **\$33**
MAIN FLOOR

ONE GROUP MEN'S Sport Shirts All Wools & Blends Broken Lots **\$5**
MAIN FLOOR

ONE GROUP MEN'S Sport Shirts Corduroy Sizes S-M Only **\$3**
MAIN FLOOR

MEN'S Flannel Sport Shirts Sizes S-M Only \$1 MAIN FLOOR	BOYS' All-Wool Topcoats Sizes 14-20 \$15 MAIN FLOOR
MEN'S FLANNEL PAJAMAS Sizes B-C Only \$3 MAIN FLOOR	BOYS' CORDUROY SPORT COATS Sizes 10-20 \$8 MAIN FLOOR
MEN'S ALL-WOOL WHIPCORD PANTS Sizes 34-42 Forest Green \$10 MAIN FLOOR	BOYS'—SIZES 8-18 LEATHER JACKETS Flight Style \$13
MEN'S LEATHER JACKETS 6 Only Quilt Lined \$15 MAIN FLOOR	BOYS' CORN COLOR CORDS Sizes 8-18 \$4 MAIN FLOOR
MEN'S GREY Flannel Dress Shirts Sizes S-M Only 1.50 MAIN FLOOR	WOMEN'S SUEDE OXFORDS Green-Rust Sizes 5-9 3.88 DOWNSTAIRS STORE
MEN'S BLUE CHAMBRAY WORK SHIRTS Sizes 14 1/2-17 \$1 MAIN FLOOR	30 PR. MEN'S Shearling Slippers Size 8 Only 2.88 DOWNSTAIRS STORE
MEN'S COTTON SWEAT SHIRTS Sizes S-M-L \$1 MAIN FLOOR	ONE GROUP DRAPERY FABRICS All 48" Wide 1.29 DOWNSTAIRS STORE
MEN'S WINTER JACKETS Broken Lots and Sizes \$5 MAIN FLOOR	RAYON AND NYLON 72"x84" Assorted Colors MEZZANINE \$5
MEN'S WINTER CAPS Broken Sizes and Colors \$1 MAIN FLOOR	ONE GROUP Suede Flannel Ydge. Prints and Plains 44c MEZZANINE
BOYS'—SIZES 8-14 UNION SUITS Knee or Ankle Length 2 for \$1 MAIN FLOOR	ONE GROUP BETTER YARDAGE Cottons Rayons 66c MEZZANINE

SPECIAL! SAVE!

ONE RACK GIRLS' ROBES SIZES 4-14 COTTON QUILTS **\$2**
SECOND FLOOR

ONE GROUP WOMEN'S SWEATERS NYLONS AND ORLONS **\$4**
SECOND FLOOR

ONE GROUP WOMEN'S ROBES BROKEN LOTS AND SIZES **\$5**
SECOND FLOOR

ONE GROUP WOMEN'S ROBES BROKEN LOTS AND SIZES **\$7**
SECOND FLOOR

ONE RACK WOMEN'S BETTER DRESSES **\$5 to \$13**
MAIN FLOOR