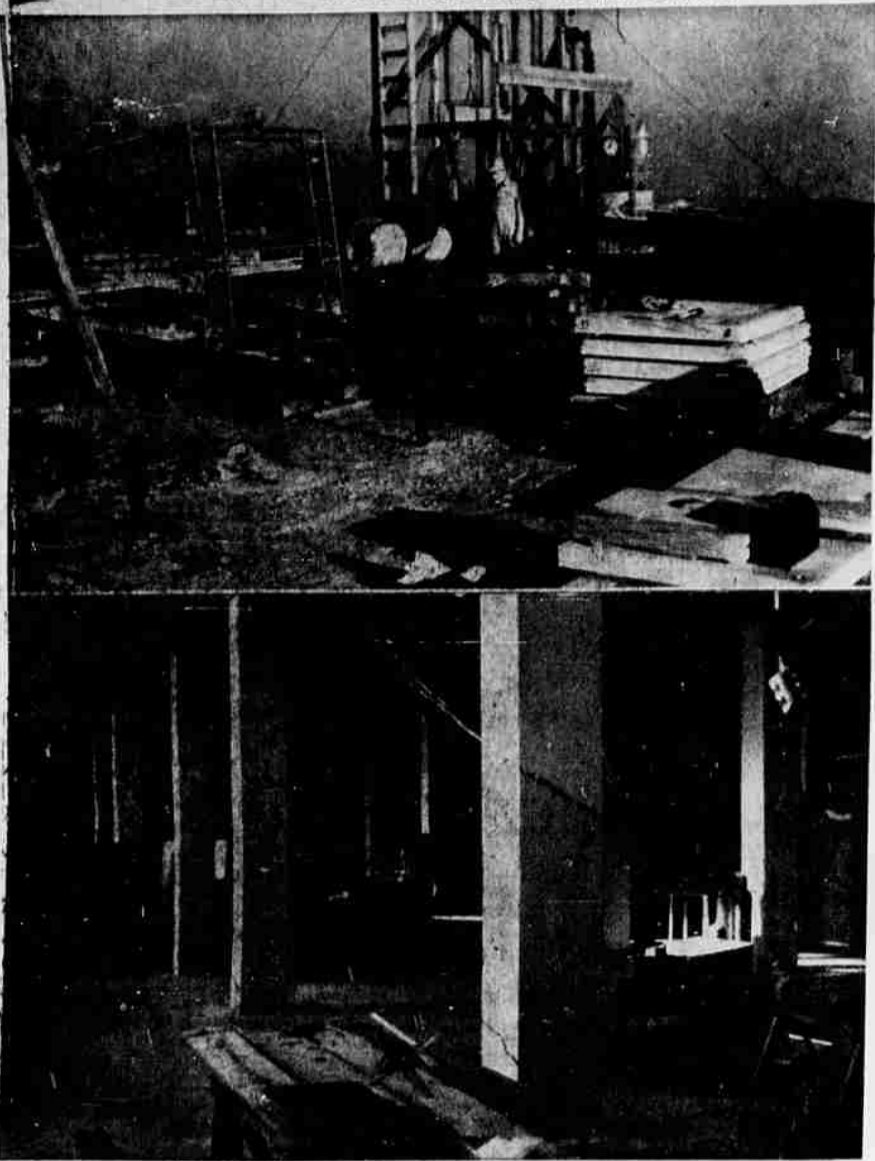


NEW COURTHOUSE NEARS COMPLETION



Top: Employees of Lutz Marble Co. will have finished laying wall marble for Marion County's new courthouse on Thursday. Odds and ends yet to be laid will require another week. Laying 10 carloads of marble on this job started May 17, 1953. Only a half day's time was lost due to inclement weather. Lower: Interior of the new courthouse showing central lobby where clerks and recorder's offices will be located.

MARKET QUOTATIONS

PORTLAND (P) - Butterfat - Tentative subject to immediate change - Premium quality, maximum to 35 to one per cent acidity, delivered in Portland, 68-71 lb; first quality, 66-69; second quality, 64-67. Valley routes a n d country points 2 cents less. Butter - Wholesale, f.o.b. bulk cubes to wholesalers - Grade AA, 93 score, 66 1/2 lb; 82 score, 65 1/2; 90 score, 64 1/2; 89 score, 62. Cheese - Selling price to Portland wholesalers - Oregon singles, 42 1/2-45 lb; Oregon 5-lb loaf, 48 1/2-51. Eggs - To wholesalers - Canned eggs containing no loss, cases included, f.o.b. Portland - A grade, large, 51 1/2-53 1/2; A medium, 50 1/2-51 1/2; A grade, small, 45 1/2-46 1/2. Eggs - To retailers - Grade AA, large, 54-56; A large, 53-55; AA medium, 52-54; A medium, 51-53; A small, 47-48. Cartons 3 cents additional. Live chickens - No. 1 quality, f.o.b. plants - Fryers and roasters, 23-25; heavy hens, 25-26; light hens, 15-17; old roosters, 14-15. Turkeys - To producers for breeder types, f.o.b. farm, New York dressed, heavy hens 31; toms 28; Beltsville hens 33, toms 28. Eviscerated frozen, to retailers, hens 57, toms 51-54. Rabbits - Average to growers - Live white, 3 1/2-5 lbs, 19-21, 5-6 lbs, 20-22; old does, 10-12, few higher. Fresh dressed fryers to retailers, 57-60; cut up, 63-66. Wholesale dressed meats: Beef, steers, choice, 500-700 lbs, 38.00-41.00; good, 36.00-39.00; commercial 31.00-36.00; utility, 27.00-34.00; commercial cows 26.00-31.00; utility, 25.00-30.00; canners-cutters, 23.00-26.00. Beef cuts (choice steers) - Hind quarters, 44.00-50.00; rounds, 43.00-46.00; full loins, trimmed, 66.00-75.00; triangles, 29.00-34.00; fore-quarters, 34.00-37.00; chucks, 38.00-42.00; ribs, 53.00-56.00. Pork cuts - Loins, choice, 8-12 lbs, 55.00-58.00; shoulders, 16 lbs, 41.00-44.50; spareribs, 50.00-56.00; fresh hams, 10-14 lbs, 61.00-66.00. Veal and calves - Good-choice, all weights, 36.00-46.00; commercial, 33.00-41.00. Lambs - Choice-prime 40.00-42.50; good, 36.00-40.00. Wool - Grease basis, Willamette Valley medium, 51-55 lbs; Eastern Oregon fine and half blood, 55-62; Willamette Valley lamb wool, 42; 12-month wool, 45-50. Country-dressed meats, f.o.b. Portland: Beef - Cows, utility, 24-28 lb; canners-cutters, 21-22. Veal - Top quality, lightweight, 33-35; rough heavies, 24-30. Hogs - Lean blockers, 39-40; sows, light, 33-35. Lambs - Best, 34-36.

SALEM MARKETS

Compiled from reports of Salem dealers for the guidance of Capital Journal readers. (Revised daily.) Retail Feed Prices: Rabbit Pellets - \$7.45 (80-lb. bag), \$4.25-4.90 (100-lb. bag). Egg Meal - \$4.85-5.20. Dairy Feed - \$1.23-1.43. \$3.90-4.90 (100 wt.). Poultry Raising Prices - Colored fryers, 23c; old roosters, 12c; colored hens, 28c; Bufforn fowl, 17c; colored roasters, 22c. Eggs: Haying Prices - Eggs, AA, 41c; large A, 39-40c; medium AA, 38c; medium A, 37-42c; small A, 31c; Eggs, wholesale prices generally 5-7 cents higher than prices above; large grade A generally quoted at 52c; mediums at 49c. Butterfat - Buying price: Premium, 70-72 cents; No. 1, 67-69 cents; No. 2, 66c.

Ike Attends Prayer Meeting

WASHINGTON (P) - President Eisenhower Thursday attended a breakfast prayer meeting where Chief Justice Earl Warren spoke of the United States as "a Christian land governed by Christian principles" and as "beacon light of faith" for all the world. The meeting was sponsored by the International Council for Christian Leadership which is holding its annual Christian action conference at the Mayflower Hotel. Some 600 persons attended, including top government officials and many members of Congress. Sen. Wiley (R-Wis.), chairman of a breakfast prayer group which meets weekly at the Capitol, read a scripture lesson from the Old Testament. Vice President Nixon read from the New Testament.

DEATHS

John Duke In this city, Feb. 2 at the age of 81 years. Husband of Lenora May Duke, West Lynn, Oregon. Father of Mrs. M. E. Chaffey, Salem, Mrs. Virginia Boomer, Salem, Mrs. Frances Jackson, West Lynn, Oregon, Robert Duke, Sacramento, Calif., Walter Duke, Salem, Oregon. Burial, 10:00 a. m. at St. Paul Episcopal Church, Rev. George Swift will officiate. Concluding services in the Mt. Crest Abbey Chapel. Rites will be held at Oregon City, Ill. (Lodge No. 118), honorary pallbearers will be: Mr. N. E. Berry, Seattle, Dr. Charles Rugh, Dr. Hadden Carter, Mr. Howard Burnham, all of Klamath Falls, Mr. Max B. McPherson, Albany, Mr. Charles Minshall, Olympia, Wash., Mr. Perry DeLapp, Salem, Active pallbearers, Mr. J. E. Soler, Mr. Dale Jacobs, Mr. Stan Brooks, Mr. James Guynes, Mr. Gordon Rounds, and H. Jackson. In lieu of flowers make contributions to the American Cancer Society, but flowers may be sent. Arrangements under the direction of the W. T. Rigdon Co.

Portland Livestock

PORTLAND (P) - (USDA) - Cattle salable 150; market rather slow but mostly steady on small supply; scattered steers 20.00-21.75; one carload unsold; utility-low commercial steers 13.00-18.00; utility-commercial steers 11.00-17.50; canner-cutter cows mostly 8.50-10.00, utility 11.00-13.00, cutter-utility bulls 11.00-14.00. Calves salable 25; scattered sales steady; good-choice vealers 20.00-25.00, prime grades 27.00. Hogs salable 150; market rather slow but about steady; choice 180-225 lb butchers 29.00-29.50, few choice No. 1 lots 29.65, choice 250-290 lb 27.00-28.00, choice 300-500 lb sows 24.00-26.00. Sheep salable 100; few choice-prime fed woolled lambs 20.50, other offerings mostly cut-utility grad at 9.00-16.00; good-choice feeders salable 15.00-16.50, good-choice slaughter ewes salable 5.50-7.00.

Chicago Grain

CHICAGO (P) - Grains generally turned lower toward the close on the board of trade Thursday after presenting a highly mixed pattern most of the session. Wheat held up quite well most of the day but in the last hour new crop contracts dropped rapidly. This apparently reflected increasing talk about a lack of storage room to house mounting surpluses of grains. Feed grains had an easier trend from the start as receipts of cash corn expanded to 150 cars. Soybeans were helped early by purchases from export houses but retreated later on apprehension over the possibility of the government offering some of its butter at cut rate prices. Wheat closed 1/2 cent lower to 1/4 higher, March 2.11 1/2-1/4, corn 1/2 cent lower to 1/4 higher, March 1.52 1/2-1/4, lower, March 78 1/2-1/4, rye 1/4 cent higher, March 1.22 1/2-1/4, soybeans 1/4 cent lower, March 3.12 1/2-1/4, and lard 23 to 38 cents a hundred pounds lower, March 16.62-16.65.

Chicago Livestock

CHICAGO (P) - A mixed trend ruled in hogs in a slow trade Thursday. Most choice 180 to 230 pound butchers moved at \$25.75 to \$26.50. Steady prices ruled for steers and heifers. Buyers paid a top of \$26.50 for a load of mixed choice and prime 1,250 pound steers. Utility and commercial cows brought \$10.50 to \$12.50. Good and choice woolled lambs sold at \$19.50 to \$20.75 with choice and prime at \$21.00 to \$21.75. Salable receipts were estimated at 7,000 hogs, 2,500 cattle, 300 calves and 1,000 sheep.

Portland Grain

PORTLAND (P) - No bids or offers on cash grain. Wheat (bid) to arrive market, basis No. 1, bulk, delivered coast: Soft White 2.34; Soft White (excluding Rex) 2.34; White Club 2.34. Hard Red Winter C Ordinary 2.34. Thursday's car receipts: wheat 1; barley 1; flour 3; corn 3; mill feed 8.

Portland Eastside

PORTLAND (UP) - Trading on the Eastside Farmers' market was slow today with prices slightly lower at 1.00 a box or below; very few Willamette valley apples available.

STOCKS

Table listing various stocks and their prices, including Admiral Corporation, Allied Chemical, American Airlines, American Power & Light, American Tel. & Tel., Anaconda Copper, Atchafalca Railroad, Bethlehem Steel, Boeing Airplane Co., Borg Warner, Burroughs Adding Machine, California Packing, Canadian Pacific, Caterpillar Tractor, Celanese Corporation, Chrysler Corporation, Cities Service, Consolidated Edison, Consolidated Vultee, Crown Zellerbach, Curtiss Wright, Douglas Aircraft, du Pont de Nemours, Eastman Kodak, Emerson Radio, General Electric, General Foods, General Motors, Georgia Pac Plywood, Goodyear Tire, Homestake Mining Co., International Harvester, International Paper, Johns Manville, Kennecott Copper, Libby, McNeill, Lockheed Aircraft, Loew's Incorporated, Long Bell A, Montgomery Ward, Nash Kelvinator, New York Central, Northern Pacific, Pacific American Fish, Pacific Gas & Electric, Pacific Tel. & Tel., Packard Motor Car, Penney (U.C.) Co., Pennsylvania R. R., Pepsi Cola Co., Philco Radio, Radio Corporation, Rayonier Incorp, Rayonier Incorp Pfd, Republic Steel, Reynolds Metals, Richfield Oil, Safeway Stores Inc., Scott Paper Co., Sears Roebuck & Co., Socony-Vacuum Oil, Southern Pacific, Standard Oil Calif., Standard Oil N.J., Studebaker Corp., Sunshine Mining, Swift & Company, Transamerica Corp., Twentieth Century Fox, Union Oil Company, Union Pacific, United Airlines, United Aircraft, United Corporation, United States Plywood, United States Steel, Western Union Tel, Westinghouse Air Brake, Westinghouse Electric, Woolworth Company.

MILITARY MEN AND VETERANS

Thursday, February 4 Organized Naval Reserve surface division at Naval and Marine Corps Reserve training center. Company D, 162nd infantry, at Salem army. Battery D, 722nd AAA, AW battalion at Quonset huts on Lee street. Friday, February 5 Seabee Reserves at Naval and Marine Corps Reserve training center. Saturday-Sunday, February 6-7 Naval Air Reserve squadron AAU 891 at Salem Naval Air Facility. OLSON JUDGE FOR LEWIS, WASH.—Master Sgt. Donald R. Olson of Salem, Oregon has been named to a five-man judging committee to select the winner of the title of "Valentine's Day Sweetheart" of the 44th Infantry Division, from photo entrants. Photos will be of wives of the men of the division or girl friends of the division men. Olson, who is a member of the division's adjutant general's office, is the son of Mrs. Johanna Olson of 1245 North Liberty street, Salem. The sergeant and his wife, Joyce, reside at Tillam, Wash. McDowell Promoted Oren C. McDowell, Salem Army reservist and liaison officer and acting adjutant for headquarters and headquarters of the 929th field artillery battalion, has been promoted from a first lieutenant to a captain in the reserves. McDowell, a resident of 2640 South High street and connected with the McDowell Market, has been with the 929th since July of 1952. He first entered the service as an enlisted man in February of 1942 and was commis-

ed a second lieutenant after completing officer candidate school in October, 1945. Following his graduation McDowell was assigned to Camp Roberts as assistant personnel officer for the infantry replacement training center. His World War II service included 11 months of duty in Hawaii with the 64th Coast artillery. McDowell was released from active duty in March, 1946. Kirsch Home Home on a 19-day leave is Dale L. Kirsch, who is visiting with his parents, Mr. and Mrs. Ira J. Kirsch of Lyons. The soldier recently completed a course at the instrument repair school at Fort Belvoir, Va., and on termination of his leave reports for assignment to the Far East. Kirsch enlisted in the Army for the instrumental repair school June 17, 1953.

Wall Street

NEW YORK (P) - The stock market made progress Thursday but not without some difficulties. Gains at the best went to between 1 and 2 points, but there was only a handful of stocks in that select category. Losses came into most major divisions of the market from time to time during the day, but they remained relatively small. Trading expanded as prices advanced and came to an estimated two-million shares. That compares with 1,690,000 shares traded Wednesday when the market was rising.

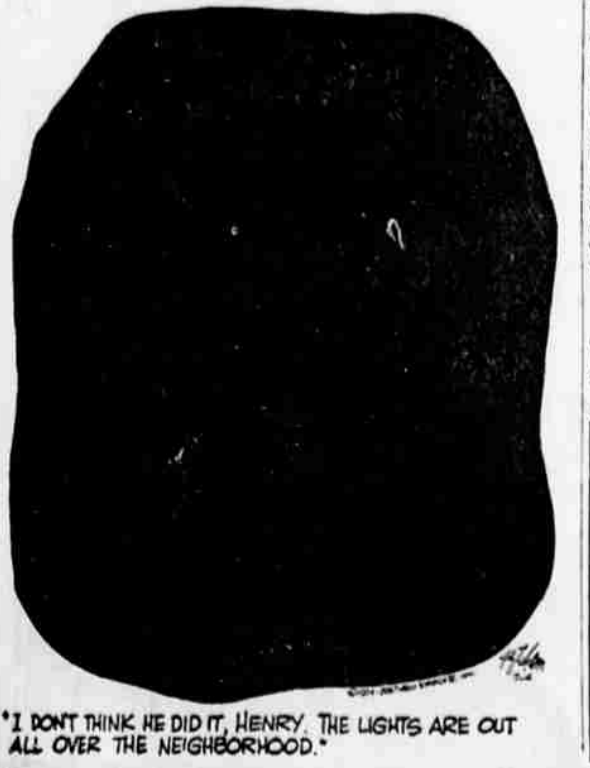
GUEST AT ROSEBURG

FAIRVIEW - Mrs. Frank Campbell of Fairview is a guest of her son-in-law and daughter, Mr. and Mrs. Carl Tallon, at Roseburg.

PHONE LINE REPAIRED

WEFOOT - The Dayton-Webfoot telephone line, No. 2, that has been out of operation since the snow came Jan. 16-17, was repaired at 3 p.m. Tuesday.

DENNIS THE MENACE



—By Ketcham

North Carolina estimates that cotton farmers lost 25 million dollars to the boll weevil in that state in 1953.

Why Suffer Any Longer When others fail, use our Chinese remedies. Amazing success for 5000 years in China. No matter with what ailments you are afflicted, diarrhea, stomach, heart, lungs, liver, kidneys, gas, constipation, ulcers, diabetes, rheumatism, gall and bladder fever, skin, female complaints. CHARLIE CHAN Chinese Herb Co. Office Hrs. 9 to 5 Tue. & Sat. only 284 N. Com'l. Phone 2-1820 841.25X. ORE.

WE GIVE AND REDEEM "A" GREEN STAMPS NOW! Maytag Automatic Washer on Wheels! MOVE IT ANYWHERE! NO PLUMBING NEEDED! (Attaches easily to kitchen sink or bathroom fixtures) Now you can enjoy all the advantages of wonderful Maytag automatic washing even in a small apartment or in temporary or rented housing. Now you can get the full-size fully automatic Maytag without any permanent or expensive plumbing installation. With a simple hose attachment, your Maytag automatic can be used right at your kitchen or bathroom sink. Move your Maytag anywhere with these heavy-duty lock casters. Store it in a closet, on a porch, along any open wall. Just wheel it to your sink to wash. "Portable" Maytag Automatic can be installed in your home in minutes. Only the Maytag Automatic has double-spin tubs! Uses less water too! Ask for a Demonstration! Receive a Package of "ALL" At No Cost! Liberal Trade-In Allowance On Your Old Washer!