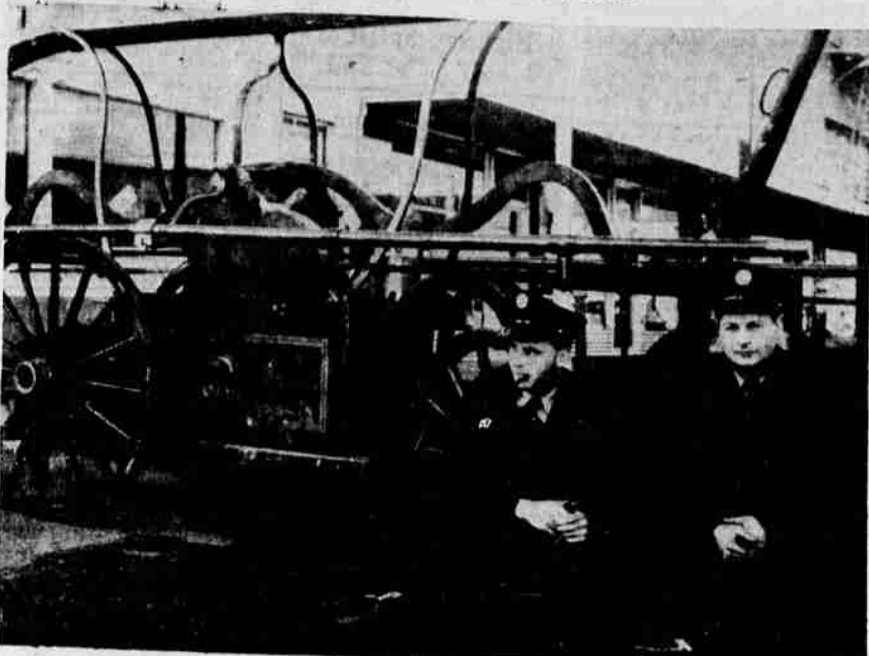


FIREMEN BOOST POLIO FUND



Posed in front of a 1870 horse-drawn fire rig once used in the Capital fire station are Vince Milligan, of the West Salem fire station, and Chuck Bower, of the central station. Also on display Sunday at High and Chemeketa for the March of Dimes promotion was an 1882 steam fire wagon, horse-drawn, used until 1917 in Salem. Below, Bill Iverson, Salem fireman, gives the March of Dimes a boost as he shines the shoes of young Stephen Kurovsky, Jr., 481 South Cottage, in Sunday's benefit at High and Chemeketa. In the background is Stephen Kurovsky, Sr.

Portland Livestock

PORTLAND (AP)—(USDA)—Cattle salable 1,700; market very slow; few sales fed steers, heifers fully 50 lower; some bids 1.00 off; cows steady with late last week; around 3 loads good-choice fed steers including 993 lb load 23.00; several lots good fed steers 21.00-22.50; commercial grades 17.50-20.50; utility steers 16.00-18.50; load high good 827 lb fed heifers 20.50; few commercial-good fed heifers 18.50-20.00; utility-commercial heifers mostly 11.50-17.00; canner-cutter cows 8.50-10.00; utility cows 11.00-13.00; commercial grades mostly 14.00-15.00; young fed cows up to 16.00; utility-commercial bull's 14.00-16.00.

Calves salable 200; market active, steady on vealers, but heavy calves slow; good-choice vealers 20.00-25.00; prime grades to 28.00; good-choice heifer calves 18.00-20.00. Hogs salable 600; market active, steady; choice 180-235 lb butchers 29.00-30.00; two lots high-yielding butchers 29.85; choice 250-280 lbs 27.00-28.00; few choice 150-170 lbs 27.00-28.50; choice 350-350 lb sows 23.50-25.00; lighter weights to 25.50. Sheep salable 1,000; market slow, steady with late last week or mostly 50 under week ago; choice-prime fed wooled lambs mostly 20.00, few lots 20.50; one sorted carload 100 lb experimentally fed lambs 21.00; few good-choice lots 18.00-19.50; good-choice feeders strong at 15.00-16.50; good-choice ewes steady at 5.50-7.00.

MANAGER



TURNER — George Cadmus, Turner sheep rancher, who has been named manager of the Marion County Fat Lamb Show which will be held at Turner Saturday, June 5.

MARKET QUOTATIONS

PORTLAND (AP) — Butterfat — Tentative, subject to immediate change—Premium quality, maximum to 35 to one per cent acidity, delivered in Portland, 68-71 lb; first quality, 66-69, second quality, 64-67. Valley routes and country points 2 cents less.

Butter—Wholesale, f.o.b. bulk cubes to wholesalers—Grade AA, 93 score, 66 1/2 lb; 92 score, 65 1/2; 90 score, 64 1/2; 89 score, 62.

Cheese—Selling price to Portland wholesalers—Oregon singles, 42 1/2; 45 lb; Oregon 5-lb loaf, 48 1/2-51.

Eggs—To wholesalers—Candled eggs containing no loss, cases included, f.o.b. Portland—A grade, 50 1/2; large, 51 1/2-53 1/2; A medium, 50 1/2; 51 1/2; A grade, small, 45 1/2-46 1/2.

Live chickens—No. 1 quality, f.o.b. plants—Fryers and roasters, 24-25; heavy hens, 25-26; light hens, 15-17; old roosters, 14-15.

Rabbits—Average to growers—Live white, 3 1/2-5 lbs, 19-21; 5-6 lbs, 20-22; old does, 18-12, few higher. Fresh dressed fryers to retailers, 57-60; cut up, 63-66.

Wholesale dressed meats—700 lbs. Beef, steers, choice, 50-55; commercial 40-42.00; good, 36.00-40.00; commercial 32.00-37.00; utility, 28.00-34.00; commercial cows 27.00-33.00; 23.00-26.00.

Jeef cuts (choice steers)—Hind quarters, 45.00-50.00; rounds, 44.00-48.00; full loins, trimmed, 68.00-78.00; triangles, 29.00-34.00; fore quarters, 33.00-37.00; chucks, 38.00-42.00; ribs, 54.00-58.00.

Pork cuts—Loin, choice, 6-12 lbs, 57.00-60.00; shoulders, 16 lbs, 41.00-45.00; spareribs, 50.00-56.00; fresh hams, 10-14 lbs, 61.00-66.00.

Veal and calves—Good-choice, all weights, 36.00-46.00; commercial, 33.00-41.00.

Lambs—Choice-prime 41.00-43.00; good, 36.00-41.00.

Wool—Grease basis, Willamette Valley medium, 51-55 lb; Eastern Oregon fine and half blood, 55-62;

Willamette Valley lamb wool, 42; 12-month wool, 45-50.

Country-dressed meats, f.o.b. Portland:

Beef—Cows, utility, 24-28 lb; canner-cutters, 21-22. Veal—Top quality, lightweight, 33-35; rough heavies, 24-30. Hogs—Lean blockers, 39-40; sows, light, 33-35. Lambs—Best, 34-36. Mutton—Best, 12-15; cull utility, 8-9.

Fresh Produce:

Onions—50 lb sacks, Wash. yellow, med., 1.00-25; Oregon yellow No. 1, med., 1.50-75; Idaho yellows, med., 1.25-50; Ige., 1.75-2.00; whites 2.50-3.00.

Potatoes—Ore. local Long Whites, 2.00-25; Deschutes Russet No. 1, 2.15-25; size A, 2.40-75; 25 lb. sk., 70-85; 10 lb mesh, 40-45; paper, 30-35; windows, 35-37; No. 2, 50 lbs, 80-85; Wash. Russets, No. 1-A, 2.25-50; Idaho's, 3.15-25.

Hay—U. S. No. 2 green alfalfa, mostly 28.00-30.00, delivered car and truck lots, f.o.b. Portland and Scio.

Filberts—Wholesale selling price f.o.b. Oregon plants, No. 1 jumbo Barcelonas, 29 lb; large, 27 1/2; medium, 25 1/2.

Walnuts—Wholesale selling prices: First quality Franquettes, 32-33 1/2 lb; light halves, 79-83; shelled light amber halves, 70-75.

Chicago Livestock

CHICAGO (AP) — Hogs sold steady to 50 cents lower with the biggest drop showing up on lightweight offerings Monday.

Salable receipts totaled 11,000 head compared with 8,500 a week ago. Butchers scaling less than 230 pounds lost 25 to 50 cents while those weighing more moved at steady to 25 cents lower quotations. Sows sold at 25 to 50 cents.

Most 180 to 230 pound topers brought \$26.00 to \$26.50, the top. Most sows weighing less than 600 pounds were taken at \$21.00 to \$23.50.

Producers unloaded 20,000 salable head in the cattle section and all divisions of the market declined. Steers and heifers sold weak to \$1.00 lower in a slow trade. Largest loss was in vealers, which broke \$1.00 to \$2.00. A few loads of prime steers sold at \$29.50 to \$30.00, the top.

Most high-choice and prime steers sold at \$25.00 to \$29.00 with buyers paying \$22.50 to \$25.00 for the bulk of choice offerings. Commercial to prime vealers moved at \$18.00 to \$29.00.

Trading was rather slow in lambs but prices held steady. Good and choice wooled lambs moved at \$20.00 to \$21.00 with a top of \$22.50 for a few prime grades. Salable receipts totaled 2,500.

Portland Grain

PORTLAND (AP) — No grain transactions. Monday's car receipts: Wheat 11; barley 2; flour 16; corn 8; mill feed 8.

FALSE TEETH That Loosen Need Not Embarrass

Many wearers of false teeth have suffered real embarrassment because their plates dropped, slipped or wobbled at just the wrong time. Do not live in fear of this happening to you. Get a little FASTEETH, the alkaline (non-acid) powder, on your plates. Hold false teeth more firmly. So they feel more comfortable. Don't sour. Check "plate color" (denture breath). Get FASTEETH at any drug counter.

STOCKS

Table with 2 columns: Company Name and Price/Change. Includes Admiral Corporation, Allied Chemical, Allis Chalmers, American Airlines, etc.

Chicago Onions: Supplies moderate, demand slow, market dull. Track sales 50 lbs. U.S. 1 unless stated; Idaho Spanish 3-inch and larger 1.30; Street sales 70 lbs. Spanish 2-inch and larger, Idaho and Oregon 1.45-1.50; Utah 1.45; Whites 2-inch and larger, also 2 1/2-inch, Idaho and Oregon 2.35; California 2.35-2.50; Midwest Yellow Globe medium 1.00-1.10, irregular 75-85, cartons twelve 3-pound Celias 1.25.

Mid Willamette Obituaries: Anna J. Weeks. SILVERTON—Funeral services for Anna J. Weeks, 85, who died Saturday night at Providence hospital, Portland, will be held Tuesday at 1.30 p.m. from Ekman Memorial chapel. Rev. Paul Burnie will officiate and burial will be in Miller cemetery.

Deaths: Nellie V. Land. At a hospital January 29. Late resident of 195 S. 23rd St., Salem. Survived by brothers, Boyd L. Wolff, Waldport, Oregon; Gavlan, Wolff, Portland; sister, Mrs. Gladys Loftus, Los Angeles; nephew, John Christensen, Salem; seven grandchildren; and 10 great-grandchildren. Funeral services will be held at 2 p.m. Wednesday in the Ballman Funeral Home, Dallas, with the Rev. Lloyd Rice officiating. Interment will be at the Odd Fellows Cemetery, Dallas, under the direction of the W. T. Rigdon Co. Friends may call at the W. T. Rigdon Chapel Tuesday noon until Wednesday at 10 a.m.

Almost Frantic from DRY SKIN ITCH? First applications of Zemo—a doctor's soothing antiseptic relieves itch of surface skin and scalp irritations. Zemo stops scratching and so aids healing.

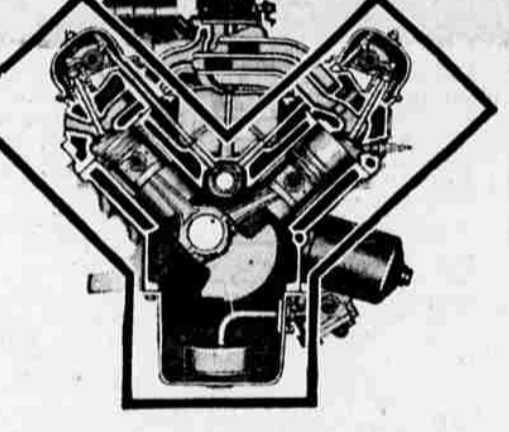
Thousands With Insomnia SLEEP Sound All Night—Awake Fresh. Users of new safe Dormin Sleeping Capsules have found—as you can be assured—sound sleep. Dormin has been clinically tested for safety and is guaranteed non-habit forming. The world of medicine progresses—so why tolerate a sleepless night that makes you tired and worn out the next day. Now for only 6 1/2c per capsule, Dormin costs but \$2.25 for 36 capsules—so safe no prescription is needed and Dormin must help you or your money back! Accept no substitute. There is No Substitute For DORMIN SLEEPING CAPSULES.

LEGAL: EXECUTRIX'S FINAL NOTICE. Notice is hereby given that Gladys Lee, as Executrix of the estate of Othel E. Lee, Deceased, has filed her final account as such and by order of the Circuit Court of the State of Oregon for the County of Marion, in the 1951 day of February, 1954, in the forenoon of said day has been fixed as the time, and the courtroom of said court has been fixed as the place for the hearing of objections to said final account and the settlement of said estate.

NOTICE OF FINAL ACCOUNT. Notice is hereby given that the undersigned has filed his final account in the Estate of Charles Kraus, deceased, in the Circuit Court of Marion County, Oregon, and the Court has fixed March 2nd, 1954, at 9:15 a.m. in the Court Room of said Court as the time and place for the hearing of objections thereto and the settlement thereof.

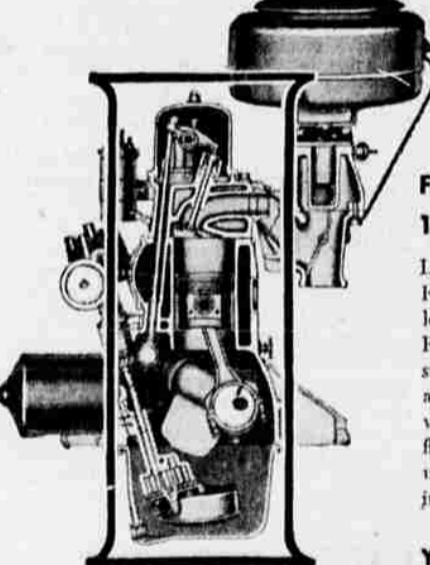
BERT S. GOODING, Administrator STOTT & GOODING, Attorneys for the Administrator 221 Yeon Bldg., Portland 4, Oregon. J 25, P 1, R, 15.

Ford presents two new deep-block engines



They're the industry's most modern engines with free-turning Overhead Valves and integral valve guides... high-compression, low-friction design... and extra deep-skirted crankcases. Both engines are designed for long life with smooth, economical performance.

Ford's new 130-h.p. Y-block V-8. This brand new Overhead-Valve V-8 has an extra-deep block which resembles a "Y" in cross-section. This new deep-block design means greater rigidity for smoother, quieter performance... longer engine life. Other features which make this engine a long-lived, smooth, saving performer are: new low-friction (short-stroke) design, Free-Turning Overhead Valves, new 5-bearing crankshaft, and new high-turbulence combustion chambers.



Ford's new 115-h.p. I-block SIX. Like the new Y-block V-8, this engine has Ford's deep-block design for greater rigidity, longer engine life. Also, like the V-8, you get Ford's modern manifolding, low-friction design, high-turbulence combustion chambers, and Ford's Automatic Engine Pilot. One advantage of both new engines is an amazingly flat "torque curve" which gives you top pick-up power through the whole range of driving speeds.

Check the extra dividends in the '54 Ford. Your Ford Dealer invites you to inspect and Test Drive Ford's new dividends for '54. You'll find new, smoother-riding, easier-handling Ball-Joint Front Suspension... a new, stronger frame... 5 optional power assists... a beautiful new styling, inside and out. They're all reasons why Ford's the one fine car in the low-price field.



More than ever... THE STANDARD for THE AMERICAN ROAD. VALLEY MOTOR COMPANY 375 Center Street Salem, Oregon