

Capital Journal HOME PAGE Questions Answered

By MARK M. TAYLOR
Q. - A friend advised me that if I planted my daffodil bulbs at least eight inches deep they would not need to be dug and reset for several years.

Ans. - Deep planting of daffodils is a common practice to alleviate the need for resetting and to prevent a mass of growth as the new offsets form.

Q. - I want a small edging plant to keep grass from creeping into the flower beds. What do you recommend? - R.L.
Ans. - Grass creeping into the flower bed because it is cultivated and fertilized so it reaches for the food there.

Q. - Should Mexican Orange be pruned now? - O.N.
Ans. - Prune after flowering, except when planting it may be necessary to prune back one third.

Q. - I have several African Violet leaves in water that have formed roots. Can I pot them up now? - R.L.
Ans. - Prepare them for potting by gradually adding the soil mixture to the water, and then pot. This will keep the rootlets intact.

Q. - I want a small edging plant to keep grass from creeping into the flower beds. What do you recommend? - R.L.
Ans. - Grass creeping into the flower bed because it is cultivated and fertilized so it reaches for the food there.

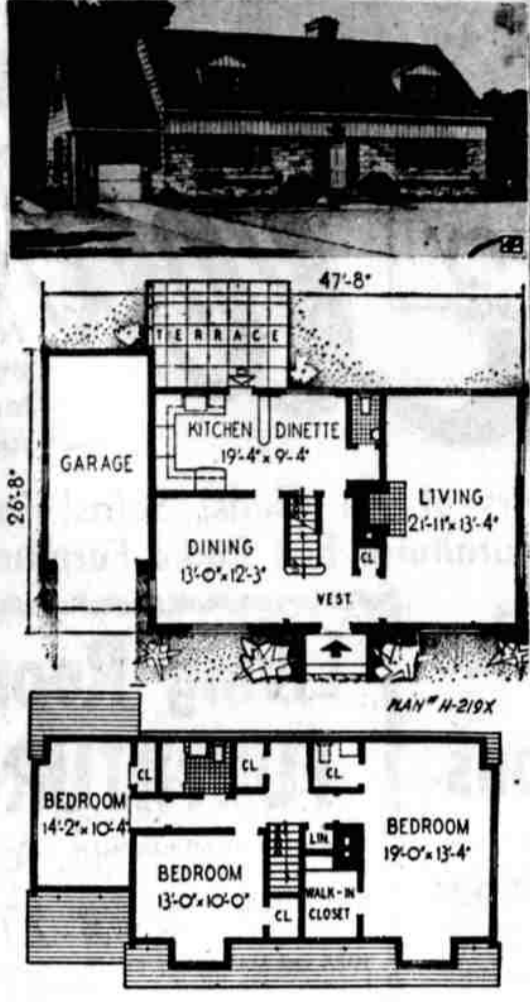
Q. - I have several African Violet leaves in water that have formed roots. Can I pot them up now? - R.L.
Ans. - Prepare them for potting by gradually adding the soil mixture to the water, and then pot.

Q. - I want a small edging plant to keep grass from creeping into the flower beds. What do you recommend? - R.L.
Ans. - Grass creeping into the flower bed because it is cultivated and fertilized so it reaches for the food there.

Q. - I have several African Violet leaves in water that have formed roots. Can I pot them up now? - R.L.
Ans. - Prepare them for potting by gradually adding the soil mixture to the water, and then pot.

Do you like good bread? You can eat and enjoy Sun Valley Bread... Made by the Bakers of Master Bread. Doughton Hardware 355 Court We Give 'S&H' Green Stamps

HOMES FOR AMERICANS



Two-story capacity in a cottage is the feature of this story and a half house planned for economy in construction. Three bedrooms, bath and roomy closets are located upstairs.

Prune When Knife Is Sharp And Bear in Mind 8 Reasons

An oft quoted rule of thumb concerning the pruning of deciduous shrubs and trees is "Prune when the knife is sharp." The real merit in that is that pruning requires a clean, quick cut to prevent damage to the remaining part of the tree.

That phone number is 3-3131 FOR THE BEST HAULING STORAGE FUEL BEKINS VAN LINES CO. LARMER TRANSFER and STORAGE 889 No. Liberty

Roses Popular In History

By MARK M. TAYLOR

To pay the rent of property with "One red rose yearly if the same be demanded" is a delightful thought. Some such provision has been found in several old deeds from the early days of this country.

In 1928 a part of this tract was purchased by the Conard-Pyle company, well-known growers and hybridizers of roses, with no knowledge of the Red Rose Rent provision.

This charming idea has great historical significance. In olden times a man was commonly required to pledge his sword and his life to the service of a feudal lord or landowner.

It was our privilege to know the late Robert Pyle of the firm that acquired the Red Rose Inn property, and his tales of the historic old place were such that we could not help but appreciate the significance of the change in law and thought.

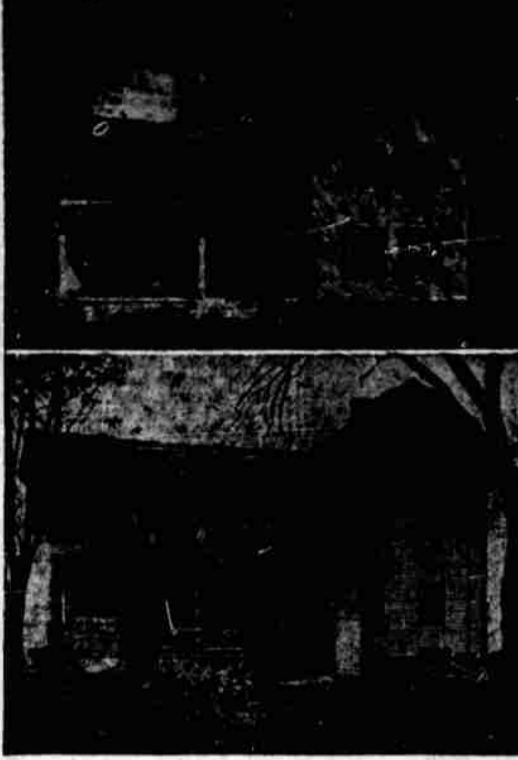
It was natural for the sons of William Penn, the great peace-loving Quaker, to use the symbol of the rose in this way in their new English colony.

Privacy is lost WILLIAMSTON, N. C. (AP) - Law enforcement officers paid no heed to signs around a thick wooded area warning: "Private property. Keep off."

To prevent damage to life and property: This is most important. If a low-hanging tree branch is such that a passerby walks into it injuring an eye, a lawsuit is possible.

For the Best in FUEL OIL GEORGE CADWELL OIL COMPANY 25th and State St. Phone 2-7431

REMODELING GIVES MODERN LOOK



Remodeling gave clean modern lines to the old house shown above in "before" and "after" versions. A new roof of colorful asphalt shingles, new paint for the sidewalls, and shutters were major changes.

On the House

Most of us are paying for electricity we are not getting. The reason, experts say, is that our homes are inadequately wired. We are trying to get a firehose flow of electricity through a soda straw.

We have filled our homes with electrical gadgets and appliances which were not even invented when most of our houses were wired for electric lights. We plug all of these new conveniences into the same trickle of power and naturally the voltage, or pressure, goes down.

The toaster dries out the bread instead of giving it a quick golden brown. The coffee maker slows down. Breakfast is late and we're late for work.

If you doubt that all this is taking money out of your pocket, consider these examples compiled by electrical engineers of the National Adequate Wiring Bureau:

What can be done about it? H. H. Watson, engineer in the construction materials division of the General Electric Co. sums

Linoleum NATIONAL BRANDS CAPITOL FLOOR COVERINGS 217 S. High Ph. 45751 Is Your Fuel Bill Over \$10.00 A Month? Better Convert to Continental Radiant GLASSHEAT 1540 Fairgrounds Road Phone 4-6243

no fuss • no muss no bother • no dirt no Pres-to-logs THE CLEAN FUEL CAPITOL LUMBER CO. PHONE 3-8862

Your Garden Notebook

By MARK M. TAYLOR

DO YOU KNOW? Potted plants need frequent feeding because of restricted root areas.

The newest rose sensation is Mojave, the first orange-colored rose.

That the rarest color in flowers is blue?

Cottonseedmeal, iron sulphate and soil may be used to make a siphon and acid reaction? Midget vegetables have gained much favor for use in freezing.

Carnation cuttings started last month will be ready for potting now. These can still be taken and will be ready for potting next month.

There's only one SKIPPY TOPS IN QUALITY! BEWARE OF IMITATIONS LOOK FOR THE HAPPY HAWK DOG LOW IN PRICE

Whether you're moving in town or to a distant city, we offer the finest in worry-free moving service. Our local storage and moving facilities are unequaled.

SLEDS HAVE WHEELS Fitzwilliam, N.H. (AP) - Impatient because snow was lacking, the New England Sled-Dog club fixed wheels to their runners for a six-mile race.

Custom-Made Drapes Capital Shade & Drapery Shop (Formerly Reinhold & Lewis) 260 S. 21st St. Phone 4-1856 Shrubs, Plants, Flowers Salem's Largest Collection SERVICE CENTER 1055 2nd, West Salem Ph. 4-3573

CUSTOM MADE VENETIAN BLINDS Of the highest quality, yet low in price, add much to the charm and livability of your home and protect your draperies and furniture from fading due to the sun's bright rays. We manufacture our own Venetian Blinds right here in Salem. Come in or call us for FREE ESTIMATES See how little it costs to make this important improvement CAPITAL SHADE & DRAPERY SHOP 560 S. 21st Ph. 4-1856

DAILY FROM SALEM To Exp. Fare Portland 8 \$ 1.30 Seattle 8 4.60 Sacramento 5 10.55 Fresno 5 12.25 Los Angeles 5 15.40 Oakland 3 11.05 San Francisco 3 11.10 Plus Fed. Tax Plus Many Regular Schedules Daily Return Trip 20% LESS on Round-Trip Tickets J. L. Wells, 450 N. Church St. Ph. 2-2428 Direct Thru Express Buses GREYHOUND There's a Greyhound Agent Near You