

Plane Rescues 2 Cripple Planes

Honolulu (AP)—A four-engine Tokyo-bound Pan American Stratocruiser escorted two disabled planes to safe landings at Wake Island today in a double "rescue," a Pan American spokesman announced.

One of the disabled planes was an Overseas National Airways DC4 flying under military charter from Honolulu to Wake. It feathered its No. 2 propeller 700 miles east of Wake and radioed for help.

The other was a Navy PBM amphibious search plane which left Wake in answer to the distress messages from the DC4.

The PBM began losing oil from its starboard engine 200 miles out of Wake. A Pan American spokesman said it messaged that it might be forced to make an emergency landing in the Pacific.

The Pan American Clipper Nightingale was refueling at Wake when the distress signals came. It left immediately to provide assistance, the airline spokesman said.

The stratocruiser picked up the PBM one hour out of Wake and flew with it as it limped to base at an altitude of 600 feet.

The airliner then picked up the DC4 and shepherded it in to a landing about 30 minutes later.

Only about 12 pounds of usable spectacle lenses are produced from a 600-pound melt of glass.

Second Capital Squad



Pictured at San Diego where they are now undergoing recruit training are members of the "Second Salem Capital Squad" who were recruited by Staff Sgt. Robert Wilson here and left Salem to begin their training October 26. The men, all of whom are privates, are Claude W. Goldsby, son of Mr. and Mrs. Andrew Goldsby, 2215 Chemawa Rd., Salem; Albert L. French, son of Mrs. H. R. Banks, Route 1, McMinnville; Harold A. Shipler, son of Mr. and Mrs. S. G. Shipler, Salem; Larry W. Well, son of Mr. and Mrs. Russell D. Well, Route 3, McMinnville; Albert L. Jirges, son of Mr. and Mrs. Leo W. Jirges, Gervais; Bobby G. Branton, son of Mr. and Mrs. J. P. Branton, Salem; Sylvan O. Stewart, son of Mr. and Mrs. Lon Stewart, Aurora; and Kenneth G. Lawrence, son of Mr. and Mrs. E. A. Lawrence, 1186 Chemawa Rd., Salem. (U. S. Marine Corps photo.)

Polar Islands As Bomb Bases

Washington (AP)—An explorer of the drifting polar ice islands says they would provide excellent hiding places for small, fast air units that could deliver an atomic counterpunch to an aggressor.

Lt. Col. Joseph O. Fletcher proposed building such units "around the all-weather fighter as an atomic bomb delivery vehicle."

Writing for the official publication "Air University Quarterly," Fletcher argued that key regular bases might be destroyed if Russia suddenly launched an atomic war and friendly nations might be frightened into denying the United States use of facilities on their territory.

But, he said, a dispersed force such as he proposed "would be at home anywhere in the Arctic Ocean, would possess unparalleled destructive capability and... could fade away into the trackless expanses of ice and water easier than an arab in the Sahara... properly camouflaged, it could lurk within short distances from enemy shores without fear of detection."

Minneapolis Papers Struck

Minneapolis (AP)—News-hungry residents of this city of more than half a million population lined up again last night to purchase copies of the Minneapolis Tribune, sold only in

the newspaper's main lobby since an AFL teamsters' strike knocked out all truck deliveries.

The morning paper continued to publish but made no effort to deliver papers to homes or newsstands. Sales, made only in the lobby were limited to five copies per buyer.

Cut from the usual 620,000-run, only 75,000 copies of the Sunday edition were printed. All were sold by mid-afternoon. Last night sale of the Monday edition was brisk. Newsstands sold out all out-of-town papers they had.

The Evening Star also will be affected by the walkout. The two papers are owned by the same company and printed in the same plant.

Although Central Falls in Rhode Island has 23,000 people in 1 square mile, the state also has a township of 49 square miles with only 700 people.

POOR BOY SANDWICH
At NORTH'S
1170 Center St.

Ed Boehnke Seeks To Replace Elliott

Portland (AP)—Ed Boehnke, Eugene, will make another bid for the Oregon republican chairmanship.

He said last week end he will be a candidate to succeed Robert A. Elliott, Medford, who defeated him in 1952 in voting of the party's state central committee.

Elliott is resigning Jan. 16.

In 1890 it took 3 1/2 hours of human labor to produce a bushel of wheat, but by 1896 the time had been reduced to 10 minutes.

OPEN
Evening 'Til
CHRISTMAS
TAYLOR'S
VARIETY
1185 Edgewater Ph. 25485

- S H A D E
- HOLLY ROSES
- HEATHER SHRUBS
- CAMELLIAS TREES
- MAGNOLIAS
- RHODODENDRONS PINK DOGWOOD

FERRILL'S NURSERY
1/2 Mile E. of Keizer Phone 2-1307

Miller's



Angel Treads

only 1.98 Hose Dept.

You'll be walking on air—really! Soft, springy foam rubber—hidden from view, but very definitely, comfortably present! Elastic insole grippers assure snug, non-slip fit. Women's sizes: Small, 4-5 1/2; Medium, 6-7 1/2; Large, 8-9 1/2. Cherry red, Hunter green, yellow, light blue, or white terry cloth.

TO ORDER BY MAIL USE THIS COUPON

NAME _____ STORE NAME _____

ADDRESS _____ ADDRESS OF STORE _____

CITY _____ ZONE _____ STATE _____

Charge Cash C.O.D.

Arson Tried on Struck Store

Pittsburgh (AP)—Fire, fed by gasoline-soaked rags, burned a barricade and a wooden door to the driveway entrance of Joseph Herne's north side warehouse early Monday.

The Herne's store is one of five big Pittsburgh department stores struck by 11 unions. The blaze caused an estimated \$200 damage.

It was discovered by a watchman. Detectives said they found gasoline soaked rags crammed between the door and the barricade. The city arson squad is investigating.

Meanwhile, the Labor Standards Assn., slated wage talks with the AFL Building Service Employees, Local 29, representing 450 strikers at Gimbel's, Kaufman's, Horne's and Frank & Seder.

Miss Hepburn Best Actress

New York (AP)—British actress Audrey Hepburn has been chosen for the double honor of the year's best actress and the outstanding "find" of 1953 by the nation's movie critics.

Miss Hepburn won the awards for her performance in her first movie, "Roman Holiday."

Jose Ferrer was selected as the best actor of the year for his portrayal of the famous French artist Toulouse-Lautrec in the film "Moulin Rouge."

Citations for best supporting performance went to Frank Sinatra for his role in "From Here to Eternity" and to Gloria Grahame for her part in "The Bad and the Beautiful."

1954 PONTIAC NOW ON DISPLAY

OPEN EVENINGS
KELLY OWENS CO.
660 N. Liberty Phone 2-4113

More Beautiful. More Powerful—Offering even Greater Value than before



Still near as ever to the lowest in cost, General Motors lowest priced eight now takes an even higher rank for quality. Styling is new, brilliant, colorful inside and out. And this Chieftain matches its new splendor with exciting new driving pleasure. New power added to the best proved engine in its field, assures heightened thrills in every phase of motoring. The Chieftain,

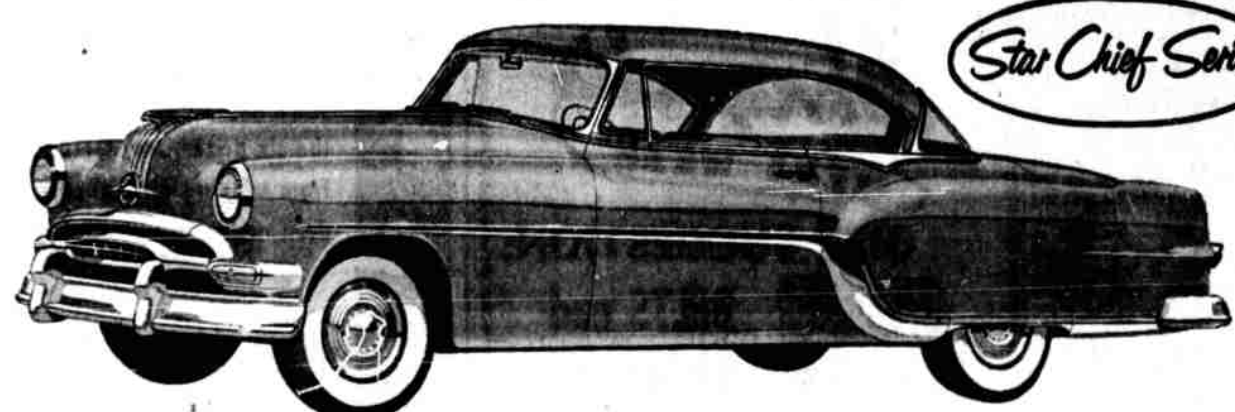
like the Star Chief, offers the optional choice, at additional cost, of Dual-Range Hydra-Matic, Power Steering, Power Brakes, Electric Window Lifts and Air-conditioning.

Come and see these finer Chieftain Sizes and Eights and the completely new Star Chief. You'll find that again in 1954, dollar for dollar—you can't beat a Pontiac!



Two Great New PONTIACS

Are Now on Display!



Most Distinguished. Most Luxurious Car ever Offered at Pontiac prices

In this magnificent car Pontiac presents not only a completely new line of the biggest, most powerful Pontiacs ever built, but also an entirely new type of automobile—the first genuine luxury car in Pontiac's low price range. Join the throngs at Pontiac showrooms and learn just what exciting news this is. Look at the long, low, aristocratic new styling made possible by the Star Chief's greater length. View the

regal luxury of the new color-matched, custom interiors—the finest sight in any price field. Come in for a ride behind the mightiest Pontiac power plant in Pontiac history, and then note this remarkable fact: Despite length, looks and luxury comparable to the finest, the Star Chief is way down the scale in price. It is America's happiest union of quality and value. Come in and prove it today!

- Biggest Pontiac ever built—214 inches long
- Magnificent New Beauty, Inside and Out
- New, Custom-Styled Interiors—New Exterior Colors
- Most Powerful Pontiac ever built
- New Roadability and Driving Ease
- New, Greatly Increased Cross-Country Luggage Room

Double Proof that Dollar for Dollar you can't beat a **Pontiac**

KELLY OWENS PONTIAC CO.

660 No. Liberty

Salem, Ore.

MR. Topcoat Buyer!

STOP!

DO NOT BUY UNTIL YOU HAVE SEEN OUR LARGE SELECTION OF OVER 300 TOPCOATS!

WE CAN FIT MR. SHORT - MR. MEDIUM - OR MR. TALL

We Do Not Sell 2nds or Promotional Merchandise—Only 1st Class Nationally Advertised Goods - Specially Budget Priced.

Shrock's
MENS WEAR

CAPITOL SHOPPING CENTER