

RETURN TO SCENE OF CRIME



Handcuffed to detective John Mancini (center), Robert N. Malm (right), is taken to the backyard spot in Hartford, Conn., where 11-year-old Irene Fiederowicz was strangled. With them is Times' reporter Don Hogan (left). Hartford police say Malm confessed the slaying. (UP Telephoto.)

Dallas Author Publishes Book

Dallas — A Dallas man will autograph his latest book at the Dallas book store at 10:30 a.m. Saturday.

"Hi, Everybody!", a book of poems written by Charles Stovall of Dallas and recently published by Parent Press of New York, has been on sale for a comparatively short time. The volume consists of 55 pages of poems and photographs taken by the author, and others used through the courtesy of the U. S. Fish and Wildlife forest service and the U. S. forest service.

Stovall states that the idea for the book came in 1949 when he was snowbound in logging operations of the Willamette Valley Lumber company.

Being called upon by the children of the camp, who were well acquainted with his songs and stories, he entertained them during the dreary days that the camp was snowbound. Since the children were thrilled with his productions, he decided to publish the book so that more children could enjoy it.

The author dedicates his "Hi-Everybody!" to his grandchildren and to Neil Smith, who was cared for by Mrs. Stovall during the first years of his life. After following the teaching profession for 19 years, he decided to change his occupation to logging. Mrs. Stovall is a teacher in the Morrison school.

Small Farmer May Expand

Washington (AP) — Secretary of Interior McKay said Thursday that farmers on federal irrigation projects whose farms are too small to support a family may now be able to enlarge or exchange the units if they desire.

Reclamation Commissioner W. A. Drexler said in a statement that settlers on federal projects who consider their farms too small should contact reclamation officials in charge of the project on which their farm units are located.

He said the new or enlarged unit may not exceed 320 acres, of which not more than 160 acres may be irrigated.

Dallas Salesman Wins Hawaii Trip

Dallas — Ray Kliever, auto salesman for J. A. Inglis Motor company, has been awarded a ten-day expense paid trip to Hawaii for himself and his wife, by being one of the leading Ford salesmen in the Pacific northwest.

Kliever's selling record was 466 points for selling 89 cars and trucks since Sept. 21. He was in the lead in his division several times since the start of the contest. Some cash is included in the award.

Since all agencies of the northwest were included in the contest, regardless of size, Kliever was competing with the larger agencies as well as

those in towns more than the size of Dallas.

Mr. and Mrs. Kliever will leave the day after Christmas for the islands and expect to return Jan. 5. Going by Western airlines, they will join a party composed of eight other leading salesmen and their wives, and nine sales managers and their wives, who competed in a separate contest. Waikiki beach will be the center of the activities for the party.

Davenport in 'Copter Crash

Nashville, Ga. (AP) — Col. Dean Davenport, Portland, Ore., one of the famous Doolittle fliers who made the first air raid on Tokyo, was injured slightly Thursday in a helicopter crash.

Now commander of the 3550th Training Group at Moody Air Base in Valdosta, Ga., he was aboard a helicopter sent to look for wreckage of a jet training plane that had crashed.

The helicopter found the wreckage, and the dead pilot, 1st Lt. Thomas Ray Murray, Nederland, Tex. But the helicopter crashed in a corn field. No one aboard the helicopter was hurt seriously.

Davenport's B-25, which took part in the Tokyo raid in World War II, crashed on the China coast and he and other crew members were conducted by friendly Chinese to freedom.

Western Veneer Takes Bill Affolter

Dallas — Bill Affolter, assistant sales manager of the Willamette Valley Lumber company, will assume a new roll when he takes over the sales management of the Western Veneer company at Lacombe, December 18, according to Arthur Quirin, manager of the Willamette Valley Lumber Co.

Affolter will commute between Junction City and Lacombe, near Lebanon until February when the sales office of the plywood concern will be moved to Lebanon.

Affolter has been with this company since returning from the Korean war theater. Prior to that he was manager of the Dallas Lumber and Supply company.

His family will remain in Dallas for the present.

UNUSUAL GIFT BARGAINS

BY SPECIAL ARRANGEMENTS A SPECTACULAR SALE

OF THESE SUPERLATIVE HOSPITALLY ADVERTISED Flexsteel

LOUNGE CHAIRS AT A PRICE YOU WOULD EXPECT TO PAY FOR ORDINARY FURNITURE



Flexsteel LIFETIME CONSTRUCTION IS BY FAR SUPERIOR!!!

There is nothing else like it! Flexsteel construction can't sag... can't break down... and Flexsteel offers you the broad range of Flexsteel Furniture... a guarantee that is your guarantee of "Lifetime" comfort!

"Savaging" proportions... smart styling... plus Flexsteel "Lifetime" construction and Flexsteel Furniture, make the Master a real family treasure! You'll love the adjustable back pillow.

The Flex-O-Pivot lounge chair features the smartest design with high back to make the most luxurious chair on the market. Complemented by Flexsteel Furniture. See its Flexsteel unit. To realize the full comfort... by this chair out... that's the real proof!

It is exciting because when you see others such smart furniture for such reasonable low prices. Come in today and discover for yourself how luxurious comfortable and how strikingly beautiful Flexsteel really is!

PHASE - FURNITURE BEGINS ON THE 1954'S

HOSTESS CHAIR

\$29.95

Regular Value \$44.95



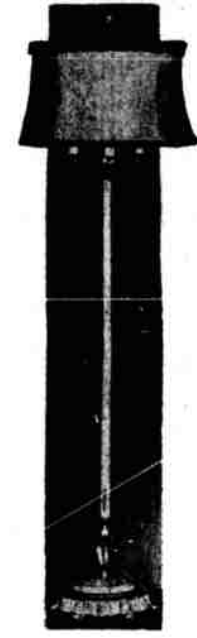
Kroehler fashionable Hostess chair. Coil spring construction, button tufted back, styled for easy relaxation. Many attractive covers from which to choose.

6-WAY FLOOR LAMPS

"The Gift That Anyone Can Always Use"

Reg. \$15.95

\$9.95



SAMPSON CARD TABLES

ONE OF A KIND - CLOSEOUT ON DISCONTINUED MODELS 41 TO CHOOSE FROM

HURRY! HURRY! HURRY! THEY WON'T LAST AT THIS PRICE

\$2.95



END TABLES

Unbelievably Low Prices

HOGG BROS

WILLAMETTE VALLEY'S LEADING APPLIANCE & HOME FURNISHERS SALEM OREGON CITY

260 STATE ST.

No Down Payment on Our Approved Credit



BECKE and WADSWORTH
"All Kinds of Insurance and Surety Bonds"
562 State St.
Opposite Court House
PH. 4-3333

TALLMAN'S PIANO SALE
814 Holds a Piano for Xmas Delivery. Payments Begin Next Year!

BRAND NEW SPINETS \$393 UP

Model Mahogany Spinet	\$329
Model Spinet	293
Model Hamilton Console Spinet	395
Model Spinet	437
Model Spinet	458
Model New Mahogany Spinet	508
Modelway Console Spinet	527
Model New Wood Spinet	530
Model New Hallet & Davis Spinet	575
Model New Lincoln Oak Spinet	607
Model New White Rose Spinet	607
Model French Provincial Spinet	730

Many Others
Grands \$427 up
Over 300 Piano Bargains
Uprights \$89 up
Easy Terms - We Carry Your Contract
Open Every Eve.
EST. 1926
TALLMAN PIANO STORES
300 S. 17th, Salem
515 S.W. 9th, Portland