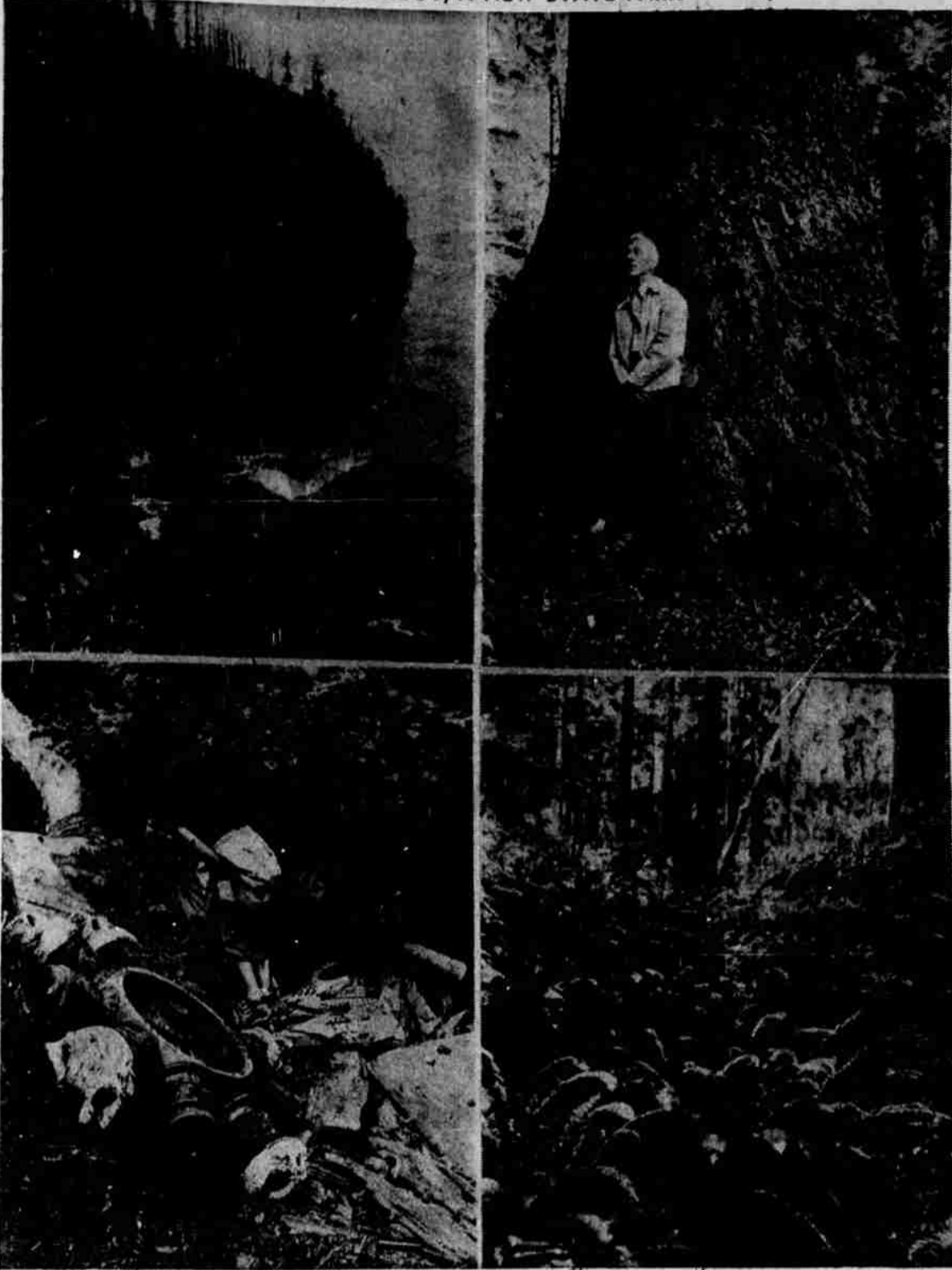


CAPE LOOKOUT, A NEW STATE PARK



Top, left: Looking down and seaward from the brink of this precipitous cliff 550 feet above the ocean affords this view Wells cove on the north side of Cape Lookout. Top, right: Fred Zimmerman, Capital Journal writer, views the rain forest from the base of this centuries old Sitka spruce near eight feet in diameter and towering about 200 feet above the thicket that forms a ground cover. Lower, left: Mrs. Louise Maxwell views wreckage of an army plane that crashed against the ridge of Cape Lookout obscured by fog August 1, 1943. Out of a crew of 10 there was but one survivor. Lower, right: Growth in the rain forest covering the northern slope of Cape Lookout never receives more than intermittent sunlight. Fronds of sword ferns shown here reach a length of five feet in this deeply shaded, humid environment.

growth survives. Near this point scraps of aluminum appear and soon the hiker reaches a plaque erected by the highway commission two years ago to commemorate nine men who died here August 1, 1943, when their four-motored army plane crashed during dense fog. Lt. Wilbur Perez of New Orleans was a sole survivor.

Presently the trail emerges on the north side of the cape where cliffs drop almost perpendicularly 550 feet into a semi-circular sea basin. Looking northward Three Arch rocks are visible some nine miles away.

At the tip of the cape (not reached by this writer who attained the northly vista mentioned above) it is possible to view Cape Madres, Cape Falcon and under favorable conditions Tillamook Head 40 miles to the northward.

Here, in season and nesting on rock shelves in the cliffs below, are California murres in great numbers. Cormorants are there, too, and an occasional merganser.

Some years ago an observer

near the tip of the cape noted beach stones, agates and bits of charcoal in a kitchen midden revealed where a large spruce tree 250 years or older had uprooted. Found also was a chert arrow head two and a half inches long. This relic associated with the shells seen in the ancient kitchen middens posed a problem that has not yet been solved. It appears unlikely that aborigines carried shell fish so distantly from the sea and over such difficult terrain for feasting. Nor is there reason for supposing that the cape was lifted from beach to its present elevation in a recent geologic period.

In addition to a pleasant trail through a deep rain forest, and spectacular viewpoints Cape Lookout state park offers mystery for those versed in anthropology and geology.

Dogs were first domesticated in neolithic times.

Cape Lookout Park Now Easy Drive From Salem

By BEN MAXWELL

Cape Lookout State park, 12 miles southwest of Tillamook and until this year difficult to reach by car, is now easily accessible at a distance of 87 miles from Salem. Picnic facilities are there now and a large, over-night camping area is in the making for next year's usage.

Those who have visited 1,392-acre Cape Lookout park and ascended the cape over an easy, scenic trail leading through a rain forest and ultimately, at the top, to spectacular views are not hesitant to say that this newly opened area is unequalled by any other ocean front Oregon park for primitive, rugged grandeur.

The late S. H. Boardman, former state superintendent of parks, acquired the Cape Lookout area from the United States Lighthouse service after long negotiations and passage of a bill by congress enabling the secretary of commerce to make the conveyance to the state highway commission.

CCC boys working under Boardman's direction constructed five and a half mile trail from Jackson creek to the extremity of the cape in 1939-40. Location called for easy walking grades and a wide trail through what may well be Oregon's most perfect rain forest.

Here Sitka spruce have a diameter of seven and more feet at the base and towers hundreds of feet above a thicket of prickly salmon berry canes, salal, huckleberries and wax myrtle. In this humid environment so dense with shade that sunlight is intermittent grow great sword ferns, many with fronds five feet in length. On moist banks are smaller, fine leaved ferns in great abundance.

Since July 7, 1951, boys from MacLaren School for Boys at Woodburn have occupied a camp site at Jackson creek and under direction of state park authorities re-worked cape trails, stabilized dunes on Netarts bay peninsula with fence, grass and boom, completed clearing the over-night camping area and built fireplaces and tables for the picnic area. Their program is now practically completed and T. Vernon Merrick, school administrative assistant, states that after September the camp will be re-located in Ecola state park where a comparable project will be undertaken.

At near mid-distance to the tip of the cape the trail emerges at an elevation of 860 feet to afford a splendid vista of mountains, beach and ocean to Sand Lake and beyond to distant capes. A little further along the trail enters a region so deeply shaded by wind-swept conifers of shrubby proportions that no under-

**VODKA COLLINS**

So smooth it leaves you breathless

**Smirnoff**  
the greatest name in VODKA

80 proof. Made from 100% grain neutral spirits. See Pierre Smirnoff, Inc., Hartford, Conn.

SAVE TIME.  
SAVE ENERGY!  
**TRAVEL WHILE YOU SLEEP**



There's the easy, safe way to Astland, Medford, Grants Pass. Sleep as you ride in Pullman or in chair car with deep-cushioned reclining seats. Enjoy lounge car with snack refreshment service. Leave in the evening; arrive next morning. Overnight service returning, too.

**S-P**  
AMERICA'S MOST MODERN TRAINS

**C. A. Larson** Agent  
Phone 3-9244

does \$200 a month interest you?

Imagine a paycheck every month—when you're no longer working! It can be yours, and more, too, under the State Farm Guaranteed Savings Plan.

Let me show you how this plan enables you to protect your future with insurance, by providing cash for emergency, and by insuring an old age security program, paying from \$100 to \$200 a month!

The cost is far less than you'd expect! Call or come in for details!

**"Si" Olson**  
**Art Holscher**  
**J. Earl Cook**  
**Larry Buhler**

626 N. High St.  
Phone 4-2215

**STATE FARM LIFE INSURANCE COMPANY**  
BLOOMINGTON, ILLINOIS

|        |                                                         |        |
|--------|---------------------------------------------------------|--------|
| 38.50  | AIRLINE TABLE MODEL                                     | 29.88  |
|        | 5-tube portable. Leatherette case.....                  |        |
| 47.95  | AIRLINE TABLE MODEL                                     | 39.88  |
|        | Portable, radio 3-speed phono. Tone control.....        |        |
| 48.95  | AIRLINE TABLE MODEL                                     | 39.88  |
|        | 5 tube automatic clock. Extra outlet.....               |        |
| 26.95  | AIRLINE TABLE MODEL                                     | 19.88  |
|        | 4 tube standard broadcast. Clock-radio.....             |        |
| 15.95  | AIRLINE TABLE MODEL                                     | 12.88  |
|        | 4 tubes, superheterodyn AC-DC. Plastic case.....        |        |
| 179.95 | AIRLINE CABINET MODEL                                   | 119.88 |
|        | Combination console, 7 tube, 3 speed record player..... |        |
| 389.95 | AIRLINE T.V. CONSOLE                                    | 323.88 |
|        | 23 tubes, 12" speaker, mah. veneer cab. with doors..... |        |
| 359.95 | AIRLINE T.V. CONSOLE                                    | 323.88 |
|        | Continuous tuner, all UH-VH channels.....               |        |
| 399.95 | AIRLINE T.V. CONSOLE                                    | 339.88 |
|        | Blond, 23 tubes, 12" speaker, with doors.....           |        |
| 464.95 | G. E. CONSOLE                                           | 399.88 |
|        | Mah. veneer finish, superheterodyne tuner.....          |        |
| 404.95 | G. E. TABLE MODEL                                       | 349.88 |
|        | Mah. finish. All channel tuner.....                     |        |

155 NO. LIBERTY *Montgomery Ward* PHONE 3-3191

# Floor Sample Sale

**ELECTRICAL APPLIANCES**

|        |                                                         |        |
|--------|---------------------------------------------------------|--------|
| 369.95 | HOME FREEZER                                            | 319.88 |
|        | 14 cu. ft. Holds 476 lbs. 3-year guarantee.....         |        |
| 179.95 | REFRIGERATOR                                            | 158.88 |
|        | Full size, economy priced, guaranteed.....              |        |
| 124.95 | SEWING MACHINE                                          | 99.88  |
|        | Portable. Reversible rotary sewing head.....            |        |
| 219.95 | CLOTHES DRYER                                           | 184.88 |
|        | Completely automatic, simple control.....               |        |
| 199.95 | MANGLE                                                  | 84.88  |
|        | 26" padded floating roll, fingertip & knee control..... |        |
| 69.90  | IRONER with STAND                                       | 44.88  |
|        | Irns everything from shirts to sheets.....              |        |
| 19.95  | HASSOCK                                                 | 14.88  |
|        | Red and green. Strong piano type hinge.....             |        |
| 59.90  | VACUUM and CART                                         | 44.88  |
|        | Tank type cleaner, plus attachments.....                |        |

**BAMBURG COATS**  
For Little Girls Who Grow so Fast  
**MARGWEN'S**  
Capital Shopping Center