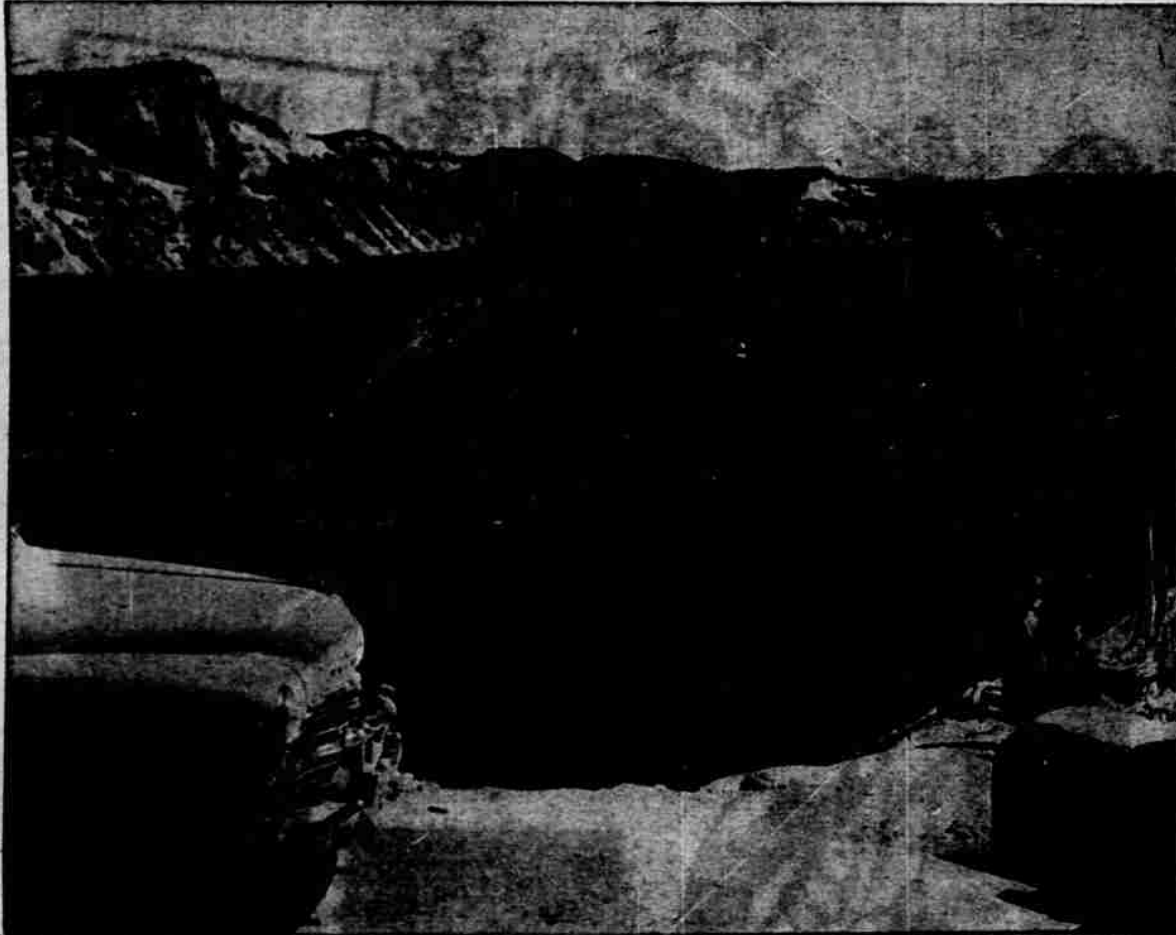


CRATER LAKE WITH ITS WIZARD ISLAND



Wizard Island thrusts itself 763 feet above the blue surface of Crater Lake in Crater Lake national park in southern Oregon. Scientists say Wizard Island is a volcano which formed on the floor of Mt. Mazama after the sum-

mit of the ancestral mountain had been destroyed in a cataclysmic eruption. Crater walls in the background are a part of the old mountain. Water from snows filled the crater to a depth of 2000 feet. (Oregon State Highway Commission Photo)

services are available because of deep snows. The latter provide excellent winter sports. During the summer travel season, from mid-June until mid-September, visitors have numerous services at their disposal, including guided field trips, naturalist discussions, evening programs at the lodge and community house.

Conveniently located and of intense interest is the Sinnott Memorial observation station, located on the inner rim of the lake, nearly 1000 feet above the water. It is equipped with a series of binoculars, trained on points of unusual geologic interest, supplemented by display cases.

The glasses and displays enable visitors, through their own efforts, to gain extensive information on the present geologic features and their relation to their ancestral mountain. On scheduled hours throughout the day, informal discussions are led by ranger-naturalists to further explain the mysterious story of Crater Lake.

Other points of interest include the Watchman fire lookout station, perched on a high point of the west rim. Visitors are welcome to view the lake from this eminence as well, observing the technique of fire detection. A short trail from the rim road leads to the summit of Mt. Scott, nearly 9000 feet up, the highest elevation in the park. A fire lookout is also located at this point and is reached by a two-mile trail from the rim road.

Oregon's Crater Lake Discovered Century Ago

This year marks the 100th anniversary of the discovery of Crater Lake in Oregon.

Where great forest-covered mountains of the West lift majestic crests high into the heavens in never-ending beauty, Crater Lake, within Crater

Lake National Park in southern Oregon, is a favorite vacation spot and scenic attraction for many thousands of visitors each year from all parts of the United States.

This scene of mysterious beauty, with its unbelievably blue waters and towering multi-colored lava cliffs, is wrapped in the silence of lost centuries, intensifying the grandeur of nature's creative efforts, Crater Lake, with a water area of approximately 20 square miles and a shoreline of 26 miles, is resting in an ancient caldera which owes its existence to volcanic activity of prehistoric times.

Men of science say a giant volcano, estimated to have been more than 12,000 feet high, continued upward from its present jagged rim for another 5000 feet. The fire mountain, in its time, is described as having been one of the most active of numerous volcanoes which studded the Pacific northwest.

Crater Lake was discovered by white men in 1853 when a party of miners was on a vain search for a fabulous lost mine. One of the party, John Wesley Hillman, came on the sea of blue quite by accident. It was seldom visited during Oregon's pioneer years. In fact, the lake was rediscovered twice after Hillman's first visit. The area was established as a national park in 1902 and since that time has been gradually developed.

A 32-mile paved highway encircles the rim of the lake, providing motorists with numerous parking areas along the way to gain spectacular views of Oregon's scenic gem. A trail leads to the water's edge, en-

tailling a walk of one and one-half miles and a drop of 1000 feet from the rim village area. At the foot of the trail boats are available for fishing and

excursion trips. No license is required for angling.

The park is open to travel throughout the year, but during the winter no general public

Early Reservations Advised at Diamond

Diamond Lake, gem of the Cascades, snuggles in its virgin-forested retreat at the foot of magnificent Mt. Thielsen near the summit of the mighty Cascade Mountains . . . 5,182 feet up.

Hard surface highways wending their way through scenes of breath-taking grandeur lead to this enchantingly lovely resort. Eight miles from Medford, Klamath Falls or Roseburg, Diamond Lake lies but a short distance from Crater Lake Lodge and only 120 miles from Bend.

By reputation, the Gem of the Cascades provides for the angler superior fishing. Swimming, boating, hiking, horseback-riding, tennis, croquet and other varied activities are provided for your amusement and relaxation.

The summer season is from June 15 to September 15 and it is advisable to make your reservations early.

Although the Pacific usually is considered rougher than the Atlantic, the Atlantic may seem rougher to the casual tourist because shipping lanes pass through latitudes which are subject to storms, while many Pacific routes lead through quieter latitudes.

Vacation Specials

- Reg. \$11.29 Portable Ice Box \$7.95
- Reg. 8.75 Coasting Reel 5.50
- Reg. 12.50 Spinning Rod, 7-ft. split bamboo 6.95
- Reg. 3.50 Tackle Box, two trays 2.95
- Reg. 1.95 Collapsible Landing Net 1.35
- Reg. 3.25 Canvas Creel 1.35
- Reg. 10.95 Glass Fly Rods 7.75
- Lake Trolls 49c
- Coleman Camp Stove, 2-burner 11.95
- 18" Tackle Box 1.49
- Spinning Vest 6.75

Save on Spinning Lures—Buy the Blades

- Folding Camp Chair with back . . . 2.39
- Double Tapered Fly Lines 2.95
- Spinning Lure Boxes 49c
- Dee-Dads 49c
- 3-Pc. Bamboo Fly Rod, 1 tip 5.95

Doughton Hardware

We Give 2x Green Stamps

355 Court

Phone 3-6788

Vacation SPECIAL

MEYER & YOUNG MEYER'S

SLACKS

from

\$8.95

None Higher than \$15.95

600 Pairs of 100% Virgin Wool Slacks, Gabardines, Sharkskins, Flannels and tweeds. Fancies and plains.

Now at

KAY WOOLEN

MILL STORE

260 So. 12th

"THE STREET THE TRANS

WENT ON"

Open All Day SATURDAY