

# 1, 2, 3 Day Tours from Salem Offer Attractions

Suggested by the Salem Chamber of Commerce

### One-Day Tours

1. Leave Salem on North Capitol street, U. S. 99E to Silverton road; take OSH 211 to right at Highland avenue; note state fairgrounds on right leaving town; just before entering Silverton in May, note Cooley Iris Gardens in bloom; in Silverton see Cooley Formal Gardens; join OSH 214 at Silverton; note view of valley from top of grade out of Silverton; stop at turnouts at North Falls and Winter Falls on way into Silver Falls state park; eat lunch on Sunday at Silver Falls restaurant on the grounds; on week days take along a picnic lunch; enjoy Silver Falls park for the afternoon; hiking, 14 waterfalls and other recreation; return to Salem via OSH 14 and OSH 22 through Shaw and Four Corners. (Total mileage 59).

2. Tour Oregon state capitol in Salem in morning; guided tours on main floor just off rotunda; take OSH 219, North River road out North Commercial street 23 miles to Champoe Memorial state park, site of the formation of government in the Oregon territory in 1843. Take picnic lunch, eating at park. Return to Salem via OSH 219, U. S. highway 99W to Rickreall; OSH 22 into Salem. (Total mileage 51).

3. Take Oregon State Highway 22 out State street from Salem; see Detroit and Big Cliff dams; lunch at Marion Forks; return via OSH 22 to Santiam Junction; U.S. highway 20 back through Sweet Home, Lebanon and Albany; U. S. highway 99E to Salem. Stops also may be made at Marion Forks (good place to eat, too); Marion Forks state fish hatchery; Cascadia state park and several viewpoint to see Mt. Jefferson. (Total mileage 177).

4. Take OSH 22 west over Willamette river bridge; U. S. highway 99W to Corvallis via Rickreall and Monmouth (home of Oregon College of Education with campus on highway); tour Oregon State college campus at Corvallis; see museum in Coliseum building and arrange for other tours at Administration building; return via U. S. highway 20 through Albany and U. S. highway 99E to Salem. (Total mileage 69).

5. Take OSH 22 over Willamette river bridge through Dallas to Wallace Bridge; OSH 18 and U. S. highway 101 to Oceanlake and beaches. (Lunch here) U. S. highway 101 south to Newport stopping to see such sights as Depoe Bay, Boiler Bay, Otter Crest, Devils Punch Bowl; return via U. S. highway 20, to Corvallis; U. S. highway 99W and OSH 22 to Salem. (Total mileage 179).

### Two-Day Tours

1. Coastal Loop—Take OSH 22 westward over Willamette river bridge through Dallas to Wallace bridge; Oregon state highway 18 and U. S. highway 101 to coast; spend night at coastal motel or resort near Oceanlake, Nelscott or Taft; take deep sea fishing trip in morning at Depoe Bay; lunch at Newport; U. S. highway 20 to Corvallis and Albany; U. S. highway 99 north to Salem. (Total mileage 180).

2. Santiam-McKenzie Loop—Take OSH 22 out State street from Salem; see Santiam Canyon area including Big Cliff and Detroit dams; Marion Forks fish hatchery; (Lunch at Marion Forks); see Suttle and Blue lakes and views of Mt.

Jefferson and Washington; join U. S. highway 126 at Sisters; (spend night at McKenzie resort arranging for boat trip down river next morning); pick up car at Leaburg dam and continue on U. S. highway 126 to Eugene; see University of Oregon campus and museum there; return to Salem via U. S. highway 99 and 99E. (Total mileage 277).

3. Mt. Hood Loop—Take U.S. 99E and OSH 211 out Fairgrounds Road to Sandy via Silverton and Molalla; U. S. 26 to Government Camp and Timberline Lodge (spend night); U. S. 26, OSH 35 around Mt. Hood via Hood River valley; from Hood River take Columbia river highway, U. S. 30 to Dodson; take scenic highway here to see 11 waterfalls in 11 miles, eight state parks and Vista House stop Crown Point; rejoin U. S. 30 at Troutdale to Portland; U.S. 99E southward to Salem. (May also stop at 82nd and Sandy to see Sanctuary of Our Sorrowful Mother). (Total mileage 260).

4. Astoria Loop—Take U. S. highway 99E out Portland Rd. from Salem; join U. S. highway 30, Lower Columbia river highway in Portland; see Bradley state park, Tongue Point naval base and mothball fleet enroute; drive to top of Coxcomb hill in Astoria for view of city and mouth of Columbia river from the Astor Column; take U. S. highway 101 to Seaside (spend night); return to Salem afternoon of next day by U. S. highway 26 and U. S. 99E. (Total mileage 305).

5. Tillamook Loop — Take U. S. 99E to Portland; join U.S. 26, the Sunset highway to junction with U. S. 101 south of Seaside; take U. S. 101 southward to Cannon Beach and North Tillamook county beaches (spend night); awe inspiring view from Neahkahnie Mountain south of Cannon Beach; tour Tillamook cheese factory next day, just north of town on U. S. 101; note giant blimp bases south of town; return to Salem via U. S. 101, OSH 14 to Valley Junction and OSH 18 and 22. (Total mileage 252).

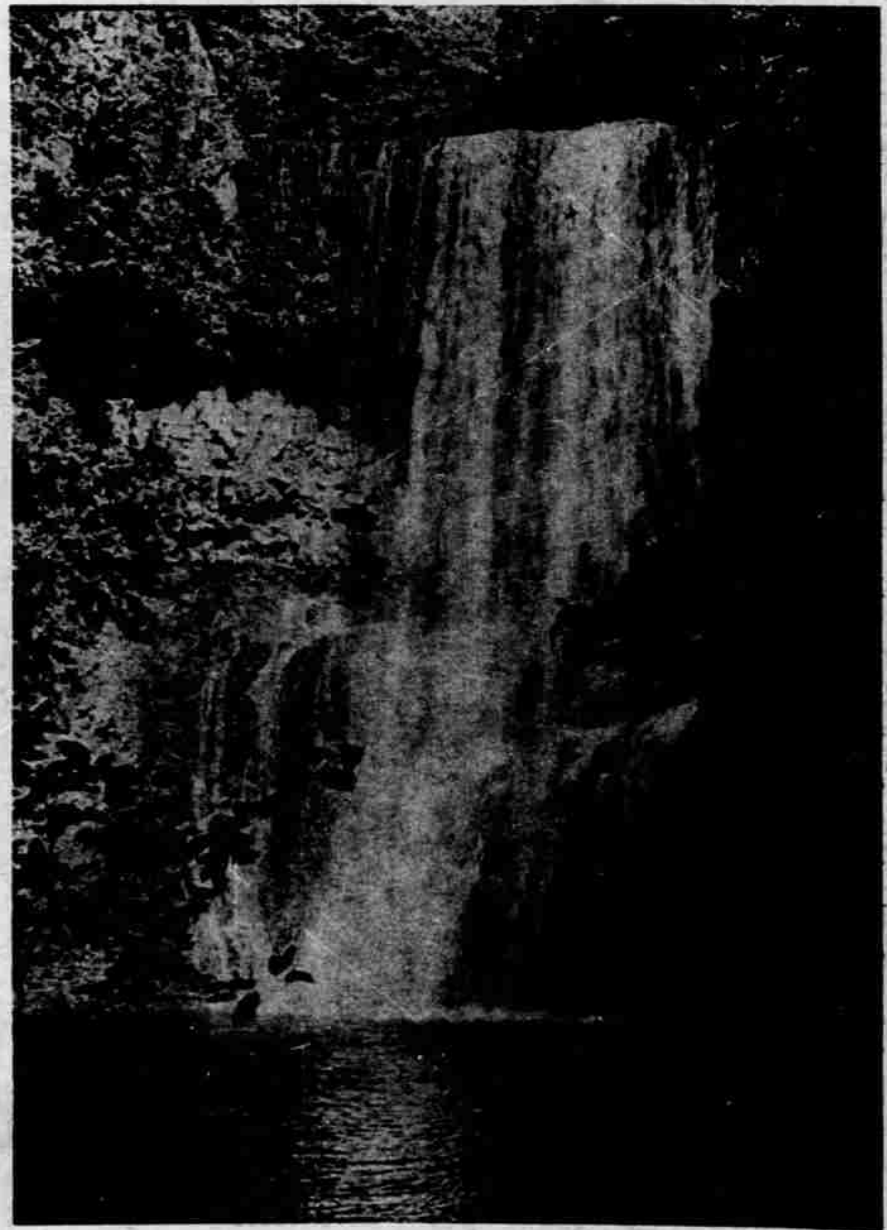
### Three-Day Tours

1. Willamette Pass - Century Drive Loop—Take U. S. highway 99E, 99 to Goshen; tour Eugene and University of Oregon campus enroute; join OSH 58 to Crescent or Odell Lake (spend night); next day take OSH 58, U. S. highway 97 and South Century Drive, north of Lapine to Elk Lake (spend the night); return to Salem via North Century Drive to Bend, U. S. highway 20 and OSH 222 (possible in summer only). (Total mileage 402).

2. Crater Lake-Grants Pass Loop—Take U. S. highway 99E and 99 to Goshen; tour Eugene and University of Oregon campus enroute; join OSH 58 to U. S. highway 97 southward to junction with OSH 230 and 209 to Crater Lake (lodge open after June 15 to spend night); see lake area morning next day; leave after lunch taking OSH 62 to Medford, U. S. highway 99 to Grants Pass and Roseburg (spend night); return to Salem next day via U. S. highway 99 and 99E. (Total mileage 553).

3. Bend-Mt. Hood-Columbia Gorge Loop—Take OSH 22 out State street from Salem and U. S. 20 to Bend; see Detroit and Big Cliff dams and Marion Forks fish hatchery enroute; (spend night at Bend); evening drive to Pilot Butte state

## BEAUTIFUL SILVER CREEK FALLS NEAR SALEM



Lower South Falls drops 100 feet over volcanic formations in Oregon's Silver Creek Falls state park near Salem. This is one of ten cascades for which the park has long been well known. Picnic grounds, a lodge and hiking trails are at the disposal of visitors. (Oregon State Highway Commission Photo)

park or out Century Drive (in summer); next day take U. S. highway 97 to Madras; U. S. highway 26 to Government Camp and Timberline Lodge (spend night); ride chair lift and skiway; next day take U.S. 26 and OSH 35 to Hood River through Hood River valley; U. S. 30 and Columbia river scenic drive to Troutdale and Portland; see 11 waterfalls in 11 miles, eight state parks and view of gorge from Vista House; return to Salem via U.S. 99E. (Total mileage 382 plus side trips 50 miles—432).

4. Depoe Bay-Waldport-Alsea-Corvallis Loop—Take OSH 22 and 18 and U. S. highway 101 through Dallas, Wallace Bridge, Valley Junction and Otis to the coast spending night at a North Lincoln county beach; deep sea fishing morning of next day from Depoe Bay; then take U. S. 101 southward to Waldport area (spend night); return to Salem via OSH 34 along Alsea river, U. S. 20 and 99E through Corvallis and Albany. See Oregon State college campus at Corvallis on return trip. (Total mileage 204).

5. Metolius-McKenzie Loop—Take OSH 22 out State street from Salem; U.S. 20 and Forest Road to Camp Sherman (spend night); See Detroit and Big Cliff Dam and Marion Forks Fish Hatchery en route; Fish Metolius river next day; U.S. 20 to Bend; (spend night); U.S. 126, the McKenzie highway and U.S. 99 and 99E to Salem.

See White Water McKenzie, Lava Beds and University of Oregon campus en route. (Total mileage 292.)

### SCHOLARSHIPS AWARDED

Rochester, N. Y. U.S. — The University of Rochester today

awarded three Bausch & Lomb science scholarships, valued at \$3,200 each to three outstanding high school students selected from the 10th annual nationwide competition. One of the students was A. Angus Temperley, Toppenish, Wash.

a NATURAL for Vacation

# DENIM

SLACKS - \$4.95

JACKETS - \$4.95

SHOES - \$5.95

IN POPULAR

- FADED BLUE
- FADED GREEN
- CHARCOAL

OPEN FRIDAY NIGHT 'TIL 9

## The Man's Shop

Don Ramsdell

Jay Monnette

416 State

Phone 3-6537