

### Silks, Wools, Cottons and Miracle Fibers Point Up New, Textured Interest

Fabrics give the shape and texture to the Fashion themes for Spring! Not in many a year has so much dramatic importance been given to so many different, exciting variations; slub, crisp, and supple fabrics create a new sensation in wearables!

**SILK** is again every woman's fabric — particularly in sarah, honon and shantung. The "silk" coat . . . the "silk" dress and the "silk" costume — are all fashion important this Spring.

Jersey and flannel . . . patterned tweeds with plain . . . hairy-surface pastels combine with smooth darks . . . boucles with linens or suitings — are the coordinate fabrics for the fashion-right costumes of the new season.

**SLUBS** — fabrics with the "raw" look of natural fibers — such as shantung, pongee, seeded yarns, textured tweeds — are all newly-important and newly-exciting.

**SUPPLE** — easy-to-drape, natural-handling fabrics — easily adaptable to the slim silhouette, take on a new surge of interest in the Spring showings in mat jersey, soft satins, gentle silks, chiffons and newest crepes.

**CRISP** — novelty failles, bengalines, textured taffetas, metallic-highlighted combed cottons, honans and others — give staccato emphasis to crisply-handled Spring treatments.

The luxury fabrics, such as vicuna, cashmere and camel's hair — now blended with the miracle fibers, take on new elegance and dramatic importance in coat and suit showings.

Look to B-I-G emphasis on linen . . . jersey . . . shantung! All of them, important in their own rights — equally important as coordinates, complements and trims!

**COTTON** looms on the fashion scene as the leading contender for the spotlight! Designers this year interpret some of the smartest and most versatile creations . . . for day time into evening wear in fascinating cottons. They have found cotton eminently "suitable," and are showing suits in a wide variety of cottons from denims, baby cords, ginghams, to suitings handled with a menswear look.

They have adapted cottons to every silhouette and shape of the season, and dipped them in a rich variety of pale to vivid hues.

Fabrics ranging from cotton

### Coronation Coin; New Jewel Fad

An important theme in this Spring's jewelry will be the official British Coronation coin. Women throughout the country will add bright fillips to their costumes in the form of coin earrings, pins, necklaces and bracelets.

The coin is about the size of an American half dollar, has been approved by the Queen and will be worn by British soldiers.

It is made from a die prepared by the mint of England and several prominent U. S. jewelry firms have obtained license to reproduce the design in all types of jewelry.

### Foundations Accent New Narrow Line

A natural-looking curve will underline your lovely figure this Spring, according to the new fashions in foundation garments.

The long line is an innovation in bras, pantie-girdles and the complete one-piece foundation.

Pantie girdles are built up at the waist to add diaphragm support or down on the thigh for a smooth line. Strategically placed elastic and light weight feather-boning help to achieve freedom with better stomach support.

More elastic is being used in many of the new bra styles to give freedom of movement along with comfortable control. The elastic adapts itself to different figure contours.

A boon to the minimum figure is the inflatable bra. Other designs that add charm, feature foam rubber padding attached against satin and cotton.

A design innovation is a halter-bra, adjustable at the neckline. A wired strapless comes in a "D" cup for the fuller figure. Many bras with under-cup wires have cuffed tops which can be adjusted to the wanted depth.

Top-to-hip foundations show



Distinctive suit of women plique and matching chambray and trimmed with mink! Blouse and lining of solid chambray.

### Glass Panels Give Beauty; Extra Light

Blocks of glass — hollow bricks of translucent glass widely used in all types of construction — now are being employed on a wide scale by home builders and remodelers from coast to coast.

This material, which transmits daylight without loss of privacy, insulation or strength can be used with a wide variety to improve appearance and livability of a home.

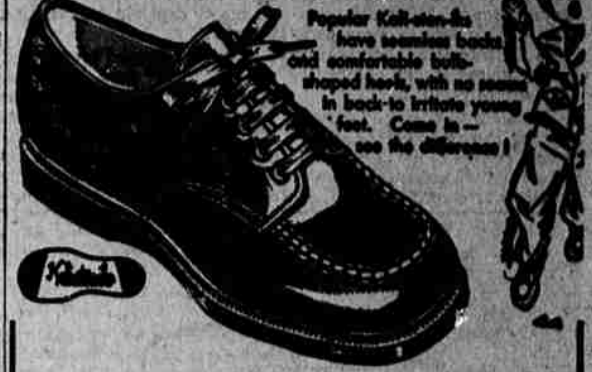
The square glass blocks are about 4 inches thick and come in 6, 8 and 12-inch sizes. They are sturdily built and their hollow interiors contain a partial vacuum giving a glass block panel, insulating qualities similar to an 8-inch brick wall. Several face patterns of glass block are manufactured, each designed to meet specific needs.

The glass block panels are especially suitable for home remodeling. Vertical panels of glass block flanking an entrance will add beauty and light to the home. Square or rectangular panels can be used throughout the house wherever additional light is desired without exposure of an undesirable view.

Glass block panels are especially suitable for kitchens and bathrooms because the material is modern, sturdy, good

looking, impervious to water, easy to keep clean, insures privacy, and on top of all that, in the bath, the panels make excellent shower walls and dividing partitions admitting light without loss of privacy.

### He HAD A FIT—and a good fit with Kalksten-ika children's shoes



Popular Kalksten-ika have seamless built-in comfortable built-in arch, with no seams in back-to-irritate young feet. Come in — see the difference!

Whether you want rugged play shoes, or attractive party straps, we will see that your child is properly fitted. You see, CHILDREN'S SHOES IS OUR BUSINESS!

BRUCE SAVAGE  
**ACKLINS JUNIOR BOOTERY**  
OPEN UNTIL 9:00 FRIDAY  
234 N. High St. Senator Hotel Bldg.



To Church . . . To Grandma's . . . or off on a jaunt you want to look your loveliest for this Easter! The **EASTER PARADE** of distinctive fashions is now in full swing at **THE VOGUE OF SALEM**. Everything to produce a "well turned out" you . . . Coats, Suits, Dresses, Millinery and many "Just Right" accessories. Drop into **The Vogue** today while selections are at their very best, and choose your complete Easter ensemble!

### Bunny Soft Coats For Easter and Beyond

The softest, nicest way we know to top a Spring and Easter Fashion . . . Shorties in waist length, topper length, ¾ length, fingertip length. Style lengths for 53".

As Nationally Advertised By:  Sycamore  Town Craft  Jecklens  Smart Lady

Also a beautiful showing in regular length coats From \$25.00 Thru \$89.95



Easter and all through the year **The Vogue** offers you the Top Styles in Women's Apparel.



### Easter Bonnets FOR MILADY

The newest, prettiest most exciting Easter Straws  
Millinery Salon  
Merrimack Floor

YOUR OWN FAVORITE ORIGINALS  
 Ruby Ross  Frank Benson  
 Louis Skopp  Agnes  
\$9.95 Thru \$29.95

### Beautiful Dresses With Glamor Plus

Original presentations from the style-wise Easter Fashions

FROM THESE TOP DESIGNERS  
 Ellen Kaye  De Michel  
 Paul Sochs  Casual Time  
From \$12.95 Thru \$59.95

### Suitable Suits

The new suits have a planned costume look, here shown in the suit with stole.

YOU ARE SURE TO KNOW THE LABELS  
 Nathalie Nicoli  Friedmont  
 Moorale  Caliday  
 Jecklens From \$39.95 thru \$119.95



THE **Vogue of Salem**  
445 and 437 State St.  
Apparel of Distinction for Smart Women