

Reserves Give Blood for Fighting Men in Korea

Tonight reserves of the Armed Forces will be donating blood to send to the men fighting in Korea, some of whom were probably buddies of some of the reservists when they were on active duty.

The Red Cross bloodmobile is to be at the Naval and Marine Corps Reserve training center from 5 p.m. to 10 p.m. While reserves are expected to be the main donors, it is not restricted to them, for civilian donors will be welcomed. The important thing is that ample blood be given.

Many Salem people this week learned of the Armed Forces use of that blood from a Navy medical man who during World War II had commanded an amphibious hospital ship, equipped with a complete floating blood bank. Blood however, in those days, did not come from donors in the States but from other servicemen.

The visitor, Capt. J. L. Chapman, assistant district medical officer for the 13th Naval district, said the Red Cross had been designated by the defense department as the official collection agency for blood, and had both the civilian collection and military collection. For that used by the military the Red Cross receives six dollars plus per pint to help defray collection costs.

After the blood used by the armed forces is collected it is immediately taken to Travis Air Force base near San Francisco and from there is flown by military transport planes directly to Honolulu. There it is re-iced and continues on its way, stop-

ping at Guam en route to Tokyo, where the Army has its blood bank, requiring about 42 hours in all for transportation.

Considering the fact blood remains staple from 21 to 28 days, it arrives in Tokyo very fresh. There the blood is allocated to hospitals and hospital shops.

Capt. Chapman said the blood program was actively used in the Korean situation, with the plasma used on the advanced positions. From there the wounded are evacuated, via helicopter, to a hospital ship, which has the whole blood.

Only type "O" blood is shipped overseas. Other types are processed into plasma and other components, one of which is gamma globulin, used principally for prevention and to a degree for cure of communicable diseases, such as polio, measles, mumps and infectious jaundice.

The latter, it is estimated, has cut child mortality by 50 per cent.

A hospitalized serviceman who has required blood transfusions will need nine pints before he is released, the captain said.

Stressing the importance of the blood program to men in combat, Capt. Chapman noted that in World War I, when there was no blood program, the casualty rate was 10 out of every 100 men reaching the hospitals.

In World War II there was an active blood program and the mortality rate was reduced to 4.5 men out of every 100, while in the Korean incident it has been cut still further to 2.6 casualties in every 100.

Asked about his hospital ship, the USS LST 464, which he commanded in 1944 for about 12 months, the navy doctor said that it had been converted from a tank, troop and military supply ship into a complete amphibious hospital ship.

The ship took part in six different landings, going in with either the third or fourth wave. Patients were mostly army men though they did care for navy personnel and some Marine fliers.

The LST 464 had a 175-bed capacity, plus 150 ambulatory (walking) patients, had two surgeries, a laboratory, x-ray and dressing stations.

There were 12 medical officers each a specialist, two surgeons and 85 corpsmen. Included in the medical staff were an internist, pathologist, dermatologist, anesthetist, orthopedist, dentist, psychologist and an eye and ear specialist. Later when the blood bank was added a haematologist was added to the medical staff.

Mass Easter Egg Hunt at Lebanon

Lebanon—A mass Easter egg hunt for local children is being planned by the Lebanon junior chamber of commerce, President Jack Wentworth announced.

The event will be held on the high school campus Easter day at 1 p.m. Children five years old and younger will have first chance at the eggs.

In order to swell the egg collection for the hunt the downtown theaters plan a special matinee on April 4 with two colored eggs as the price of admission.

Singapore, one of the world's great ports, was developed from an unhealthy and sparsely populated island.

BPA Contracts Awarded Here

Contract for construction of the Salem and Prospect Hill microwave radio stations for the Bonneville Power Administration, and the Salem remote radio station, was awarded yesterday to the Electric company of Port Angeles, Wash.

The company's low bid was \$31,003.

T. B. Trees, project engineer, will be in charge of the construction for Salem and Prospect Hill.

At the same time contract for the construction of the West Portland and Oregon City microwave radio stations approved by Secretary of Interior Douglas McKay, was awarded to Charles R. Schmiedeskamp, Portland, on his low bid of \$30,995.

Project Engineer A. A. Hise-rope will be in charge of the construction at West Portland and Oregon City.

Upon completion, these stations will constitute the microwave link between BPA's J. D. Ross substation at Vancouver and the J. P. Alvey substation at Eugene and provide more efficient control of power transmission from the Columbia river plants to the rapidly expanding load centers in the Willamette valley.

Kellenberger Heads Forest Industries

Lebanon—Ed Kellenberger, member of a Linn county pioneer family and a life long resident of Lebanon, was named president of Western Forest Industries association at its annual meeting held in Victoria, B. C. Kellenberger is owner

of the Kell Lumber company, and Round Top Logging company in the Sweet Home area. More than 100 members and guests attended the association meeting which included a tour by rail, bus and steamship to Victoria, B. C., where business sessions were held Saturday.

Salem Students Help With Freshman Glee

A group of Salem students attending Willamette university have been named to help manage this year's Freshman Glee, annual music contest to be held in the gymnasium the night of March 21.

The assistants, according to announcement by Vaughn Blankenship, Riverside, Calif., manager, include:

Charmalee Allen, Sonja Anderson, Bonnie Baker, Diane Bulman, Don Bunsie, Marvel Coleman, Norm Cocking, Gary Gortmaker, Doris Herring, Carol Hewitt, John Rehfus, Audrey Roblin, Tom Steeves, Wanda Tanner, Dave Weeks and Clarence Woolery.

The theme for this year's Glee will be "Alma Mater." Each class composes its own words and music and the judges base their decisions upon several phases of the contest including formation.

IKE ROMPS WITH KIDDIES

Washington (AP)—The happy chatter of small children enlivened the dignified halls of the White House today as President Eisenhower romped with his grandchildren for the first time in months.

Jury Disagrees In Theft Case

Albany—After deliberating more than six hours, the Linn county circuit court jury that heard the trial of Alfred William Strain, 33, on a grand larceny charge, disagreed and was discharged.

Strain was accused of having stolen a metal boom belonging to the H. E. Werner Construction company which is constructing the western unit of the Albany interceptor sewer. Strain was accused of having taken the boom Jan. 4.

Strain took the stand in his

Tele-fun by Warren Goodrich



"Sorry I didn't answer sooner. I was following a ferryboat that turned out to be an ocean liner."... You won't miss important calls if you always answer your telephone promptly... Pacific Telephone.

Capital Journal, Salem, Ore., Thurs., March 12, 1953—own defense and his attorney called as witnesses also W. A. Matlock, scrap dealer who testified he bought the boom from persons he did not know; Doy Gatlin, who testified regarding the trailer Strain and Charles McDowell had assertedly rented to haul the boom to Matlock's junk yard.

Strain was arrested Jan. 15. He is still in the county jail.

The Amazon river is 400 miles wide near its mouth.

ANGOTHER METRO MARVEL

Sir Watkins
Daffodils
2 doz. for 29^c

Metropolitan

136 No. Commercial

You saw them in **LIFE** now see them at SALLY'S



TROPICAL acetate-and-rayon is especially crisp, has kick pleat (front and back) to make walking easy. In ten colors from oyster white and beige to navy and black. Sizes are 10-20, misses and petites. \$25



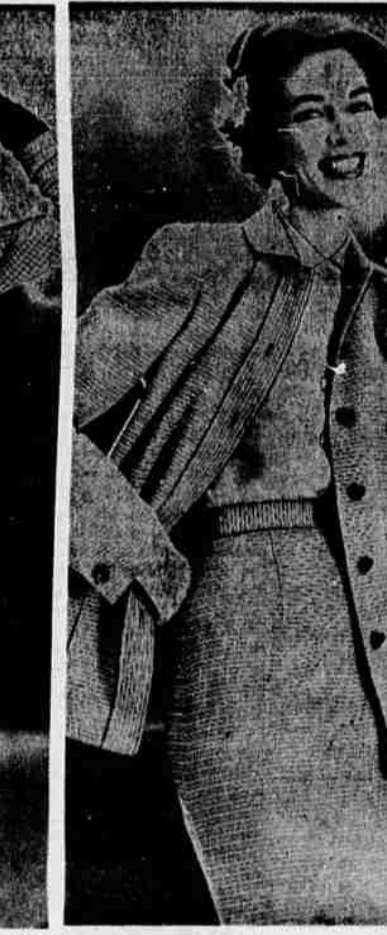
SMOOTH acetate-and-rayon is made into crisp suit with generous pleated skirt. Detachable white linen collars and cuffs have another (regular) set beneath. In navy, gray, beige, copen blue, or black. Sizes 10-20. \$35



LITTLE CHECKS in comfortably lightweight acetate-and-rayon fabric are good for all figures. Snug jacket has detachable linen over-collar. In navy, gray, beige, or red checks. Sizes 10-20, misses and petites. \$29.95



BIG CHECKS in tweedy jacket (acetate-rayon-and-nylon) make 3-piece suit with blouse and skirt of shantung (acetate-and-rayon). Black-and-pink, black-and-gold, navy-and-blue, brown-and-beige. Sizes 10-20. \$39.95



RIBBED acetate-and-rayon makes three-piece suit with matching lime-colored blouse. Box jacket is cut to lie close to figure. In gray, cocoa, or blue with fine lime-colored stripe. Suit also comes in solid colors. Sizes 10-18. \$35



PHANTOM STRIPED acetate-and-rayon weaves feels particularly nubby. It boldly banded in braid. There are four brief pleats at bottom of new "tulip" skirt. In gray, navy, brown, and red. Size 10-20. \$29.95

NEW ACETATE WEAVES MAKE THE WHOLE SUIT WORLD HAPPY

Remarkable new fabric blends show up in tropicals, tweeds, stripes, checks... sell in DUCHESS ROYAL suits for as little as \$25

New suit blends solve old suit problems. A welcome phenomenon has entered the suit world. It is **blended suit fabrics**. These fabrics (which are actually a combination of different fibers like acetate and rayon) make the new suits do a number of things which old-fashioned ones could never do.

Resist wrinkles, moths, shrinking. Suits no longer need to be moth-proofed. They do not wrinkle easily. They are not prone to shrink, stretch, or "sit out."

New fabrics make suits look costly, cost little. Best of all is the fact that these new blended fabrics look as good as the classic kind, tailor as beautifully (note the Duchess Royal suits above), and yet cost anywhere from one-third to one-half the price.

Celanese acetate gives fabrics incredibly rich feel. Most popular of these new suit fabrics are acetate and rayon blends. Celanese acetate, in particular, makes them feel pleasant and welcome. You appreciate this when you

realize that every time a woman buys clothes, she instinctively finds out what the fabric feels like.

New weaves and colors. Acetate blends are showing up in everything from crisp tropical weaves to fabrics with all the softness of flannels. They are in a range of colors the suit world never knew—brilliant shades to muted off-key tones. Prize example of this enormous variety of blended weaves and colors are these six Duchess Royal suits.

Sally's
corner of liberty and court sts...
in Salem, Oregon

3 Ways to Charge... Regular Account... 90-Day Budget Plan... Layaway — Shop Every Friday Evening Until 9 P.M. —