

Questions Answered

BY MARK M. TAYLOR

Question—Is it true that when setting out everbearing strawberries, the first year they should be transplanted at least twice?—L. M.

Blood Program In Jeopardy

Marion county may be without a Red Cross blood program after June 30, Frank Parcher, chapter manager said today.

On Television KPTV (Channel 27) MARR RADIO and TELEVISION INC.

PHILCO First in Public Demand! TV Center Open to 9 p.m.

RADIO PROGRAMS Don't fret over a down payment. We take most anything on a trade for a beautiful Raytheon

MONDAY—P. M. Radio program schedule table with stations and times.

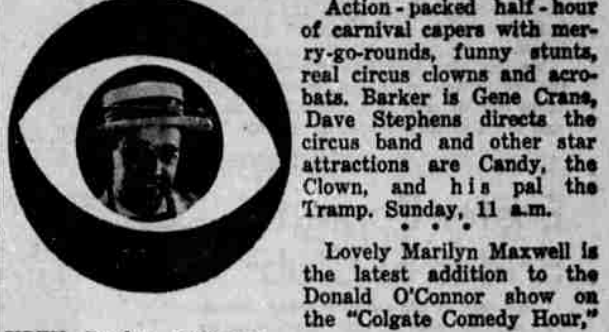
TUESDAY—6 A. M. TO 11:45 A. M. Radio program schedule table with stations and times.

TELE-VIEWS Radio-Television By DAVE BLACKMER

FORMER SALEM MAN KPTV TECHNICIAN Bernard Crane, former Salem resident, now now living in Portland has been employed by KPTV, Channel 27, as a technician.

Crane went to Salem high school, finishing in 1946 when he went into the air force.

Crane is married to a former Stayton girl, Donna Trask. His mother is still residing in Salem, at 1656 South Liberty street.



TOPS IN TV CANDY CARNIVAL Action-packed half-hour of carnival capers with merry-go-rounds, funny stunts, real circus clowns and acrobats.

Lovely Marilyn Maxwell is the latest addition to the Donald O'Connor show on the "Colgate Comedy Hour,"

KPTV, Sunday, 5:00 p.m. For O'Connor's production finale, he will dance to the musical favorite "The Continental," imagining himself at an embassy ball.

Jack Benny and the gang present his version of "The Snows of Kilimanjaro" on KOIN-CBS Radio's "Jack Benny Program" Sunday, March 8.

A weird native chant in the African jungle night chills the marrow of Benny's little safari, but it turns out to be the Sportmen singing the commercial.

COMEDY HOUR 5:00. Donald O'Connor, with guest stars, Hedy Lamarr, Marilyn Maxwell, Cecil Kellaway, Sid Miller and "Scatman" Crothers.

Fred Waring Show at 6:00 will originate from Kansas City. A minstrel production will highlight the second "road" telecast during their tour.

Red Skelton at 7:00. Mills Brothers will be guest. Red turns tennis tutor into comedy sketch.

Studio One at 8:00 stars Jimmy Dunn in "The Show Piece," story of a teen-age boy, idolized by chums and parents to the point where he comes to believe himself a hero, only to suffer the consequences of a show-off.

Annual Glee Set March 21

The Freshman Glee of Willamette University, outstanding musical of the year on the local campus, was given impetus this week with the naming of committee by the individual classes.

The unique event will be given the night of March 21 when each class will present an alma mater song, with original words and music.

Dave Weeks of Salem has been named to manage the freshman class. He will be assisted by Page Bailey, Portland, song leader; Bill Farr, Portland, formation; Amy Girrod, Salem and Donald Hermsberger, Klamath Falls, accompanists.

The sophomore group will be managed by Bob Alfred, Portland, who will also be in charge of the formation; Keith Mirick, Medford, has been named, song leader and Dorothea Church, Lake Grove, and Mirick, accompanists.

Senior manager is Bob Miller, Vancouver, Wash. His staff will include Bill Covert, Stayton, song leader; Dick Ruff, San Francisco, formation; Jane Foose, San Leandro, Cal, and Harriet Aller, Yakima, accompanists.

In the early days of arithmetic calculation, a dust-covered table was used on which figures in each column were represented by a corresponding number of marks.

Large Selection of CAMELLIAS Now in Bloom Visitors Welcome MILLARD HENNY HENNY CAMELLIAS AND AZALEAS BROOKS, OREGON Follow signs 2 mi. N. of Brooks on Hwy. 99

Marine Corps Officer Visits

A Marine Corps officer visiting in Salem after duty in Korea is Lt. Col. Charles Earl Warren, who was accompanied here by Mrs. Warren and their son, since overseas have been living at Palm City, Calif.

The Warrens are here until next Tuesday, when they leave for Quantico, Va., where the colonel will attend the amphibious warfare school. They are visiting with his parents, Mr. and Mrs. Charles M. Warren and Mrs. Warren's mother, Mrs. Billie Herberster.

A veteran of 13 years with the Marine Corps, Col. Warren just recently returned from his second tour of duty in Korea. On first going to Korea for his second tour he commanded the first service battalion. The first of October, 1952, he was given command of the second battalion of the First Marine Infantry division. He commanded this at the time he was returned to the States.

New Court House For Lincoln County

Toledo, Ore., (AP)—Construction of a new Lincoln County courthouse, at the newly approved county seat of Newport, will start by July 1, 1954, if voters approve the county court's plans.

The court which last week laid tentative plans, this week ordered a public hearing here April 8 on a tax levy to raise the construction funds. A special election will then be called.

Martin Schmalz Passes at 87

Mt. Angel—Martin Schmalz, 87 years of age, a resident of Mount Angel since 1919, died in Portland Thursday, March 5. He had been staying at the Mount Saint Joseph Home for the aged for the past six years.

Funeral services will be held Monday morning, March 9, at 8:15 o'clock, with a Requiem High Mass in St. Mary's Catholic church. Interment will be in Calvary cemetery here. Recitation of the parish rosary will be Sunday evening at 8 o'clock in St. Mary's church.

Mr. Schmalz was born December 3, 1865 in Russia, and married Miss Ludvena Lindgohr on October 20, 1888. They came to the United States March, 1902, and lived in Berwick, North Dakota, until October, 1919, when the family moved to Mount Angel. His wife died here March 19, 1946. He is survived by four children.

New Complaint On Surcharge

The second of three complaints against the surcharge being assessed by power companies was filed Friday with Public Utilities Commissioner Charles W. Heltzel.

The new complaint is directed against the Mountain States Power Co. The first one was against Portland General Electric Co.

State Rep. Monroe Sweetland, Milwaukee democrat who is leading the fight against the surcharge, said the third complaint, against Pacific Power & Light Co., will be filed next week.

The complaint against the Mountain States Power company is the same as the one against PGE, except that one additional point is raised.

This additional point is that Mountain States shouldn't be allowed to lower its rates in the Springfield area in order to meet the competition of the city-owned power system in Springfield.

Duke of Windsor Leaves for England

New York (AP)—The Duke of Windsor and his sister, Princess Mary, left for England Friday because of the illness of their mother, the 86-year-old dowager Queen Mary.

The Duchess of Windsor accompanied her husband abroad the British liner Queen Elizabeth, but went ashore before it sailed. She has never been received by the royal family since the Duke abdicated the throne to marry her.

The Duke said the last word he had was that his mother was "a little improved." She is suffering with a gastric ailment.

Fail to Agree On T-H Revision

Washington (AP)—The Eisenhower administration's efforts to get labor-management agreement on revising the Taft-Hartley law collapsed Friday.

Only SYLVANIA Halos Exclusive Halolight All Channel Tuning Long Distance Stratopower We'll Prove It in Your Home THE MUSIC CENTER 470 N. Capital In the Capital Shopping Center

DUMONT NOW QUALITY TELEVISION Offers First With the Finest in TV See the Sensational NEW DUMONT All Channel Tuner GUARANTEED TO HAVE: Less "Snow" than all other models Clarity, clearer picture Tone Unsurpassed Installed in Your Home for as Low as 2.95 per week

Valley Television Center "TWO VALLEY STORES" Complete sales, service and installation. All sets sold and installed carry full 90-day service. IN SALEM Baigley Bros. Furniture 2315 Fairgrounds Rd. Phone 2-5491 IN WOODBURN 171 Grant St. Phone 3611

Cherry City Electric 339 Chemeketa Phone 2-6762

SAVES SEED AND HOW! One for the Cutworm One for the Crow One for the Gopher And One for to Grow . . . so said the old Indian while planting his four seeds of corn in each hill. Modern gardeners need not make such allowances in seed for pests consumption when planting his garden, because scientific methods prevent pest damage. SOILDUSTO, applied to the soil when planting seeds of Corn, Radish, Bulbs or plants and shrubs, protects the garden against injury from soil insects.

Miller's SOILDUSTO available at VALLEY FARM STORE 3935 Silverton Rd. Open Sunday 9 A.M. to 4 P.M.

NORRIS-WALKER PAINT MANUFACTURERS 1710 N. Front Have We Offered a Bargain Like This Before Beautiful Wall Tile Plastic In 7 Pastel Shades Now only 5 1/2¢ per Tile 4 1/4" x 4 1/4" You can remodel that problem bath tub. Recess for as little as \$30.00, complete materials. Based on 40-foot recess. Or you may have a standard bath recess installed by our craftsmen for as little as \$50.00 complete. PHONE 4-3279 FOR ESTIMATES

GARDEN EQUIPMENT REPAIRS RENTALS We Sell, Rent, Service Mowers, Reo, Jacobson Tractors, Howard, Win-dolph Merry Tiller, Chore Maker Howser Bros. 1185 S. 2th Ph. 32466