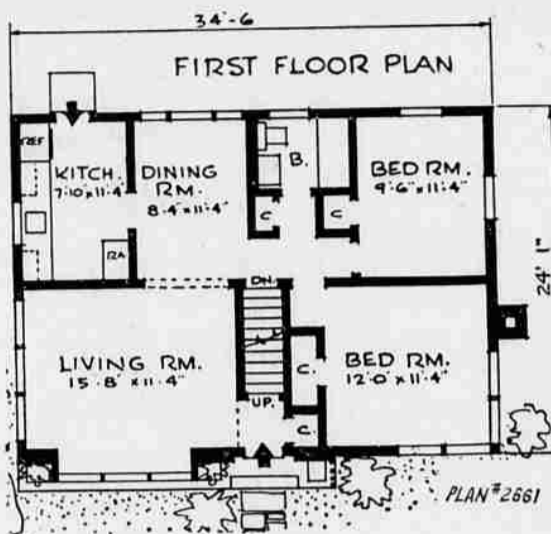
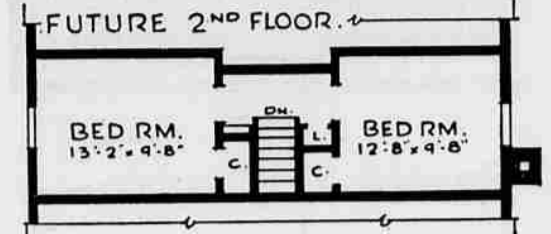


# HOMES FOR AMERICANS



Blending California and Cape Cod ideas, this small house is based on the most popular Long Island plans since the war. Although it covers only 828 square feet, a basement and expansion attic give it a generous capacity. It has 18,216 cubic feet. A large tilted window, rising from a stone flower box, and high awning type windows hinged at the top are among features. This is Plan 2861 by Rudolph A. Matern, 90-04 161st St., Jamaica 2, N. Y. (AP Wirefeatures)

# Planning a Garden Is a Job

Planning a garden, an annual ever-changing job, is a pretty complicated activity. A garden is a highly personal thing, as much a part of its owner as his handwriting. It reflects his taste, his pride and his personality. If one gardens at all, one must put plenty of thought into it.

Armchair gardening, pleasant as it is, is deluding. Most of us outline on paper a program far too ambitious to carry out satisfactorily. Once we dig up and plant more than we can tend in available time, we're faced with letting the whole grounds look seedy and run-down, hiring expensive assistance, or losing much of our pleasure by having to work too hard keeping things in control.

Everyone should have a realistic conversation with himself about the amount of work he wants to do in the garden. A small, well-tended garden is infinitely to be preferred to a big one, if it isn't going to get the attention it needs. Even a small bed of flowers requires a big investment in time and work, and if that time is grudgingly spent, it's better to invest in trees, shrubs and grass and let it go at that.

So before drawing the essential garden map and plan, decide how much work you want to do, if you want to be a Saturday gardener, don't spade up the entire north forty. If you propose to put in a couple of hours each night after work and spend a two-day week-end with spading fork and hand-weeder, the garden can be larger.

No one can measure your strength and enthusiasm but yourself, and at this time of year you are very apt to be deceived by your own estimates. Take it easy and have your garden too small rather than too large. You can always expand later.

Another important decision is the location of the garden itself. It's not entirely a matter of the richness of soil and how the sun hits your property. Think also of the family's outdoor living habits. A garden may be an outdoor living room — and as such should be planned as an extension of the house.

It may be a cutting garden, a mass of color you want to enjoy from a distance. In any event, it should be placed in harmony with the rest of the ground's landscaping. It should be planned in related units so that its owner won't spend most of the time tidying up a chopped up series of beds and plantings.

It's never too late to repair mistakes. If the rose garden at the corner was a mess because everyone took shortcuts across it, you can always transplant the roses, reseed and try a new area. If the vegetable garden proved to be an extension of the children's playground, that too can be moved — or fenced in.

The point is to know what you want from a garden. If it's vegetables, its location will be slightly different than the spot you'd pick for the mass plantings of gladioli.

Once these matters are ironed out, it's time to reach for the tape measure, the paper and pencil and get ahead with the business of planning the garden itself — what goes into it and what you want to take out of it.

home garden use are the superb all-purpose dusts, available at every seed store. The all-pur-



Planning Planting—It's best to know before you grow.

## Sowing Seeds in Hills, Really Means in Hollows

Instructions on the seed packets of cucumbers, bush and vine type squash, pumpkins, melons and some other crops that like plenty of space to spread out, usually say to "sow in hills."

Beginners would naturally suppose that this means in mounds, elevated above the surrounding surface.

But in most sections of our country, it means a point, as distinguished from a line, and is more likely to be hollow than a mound. Only where the ground is so low that it does not drain well, or rainfall may be so heavy it runs off slowly, should garden hills be elevated.

Sweet corn is sometimes sown in hills, three plants to a hill, though the practice of growing this crop in drills is spreading.

Hills are lined up in a straight row, and spaced at equal distances apart. The usual practice is to dig a shallow hole with a trowel, mix plant food with the soil in the bottom, fill soil on top of this, and then place the seeds, using a few more than plants are to be grown. This is to make sure that enough come up; if more grow than are wanted, the surplus ones are thinned out.

In well drained gardens, it may be advisable to leave a slight depression above the seeds, since most of the varieties sown in hills are tender, and are sown late when warm weather dries the soil and rains have become less frequent than in the early spring. A depression will concentrate the moisture from light rains and heavy dews, to speed

up germination of the seed. To facilitate cultivation, each hill should be marked by a stake until the seeds begin to grow. When the hills are accurately lined cultivation between rows may be carried out with the same ease as between drills; and a hand-hoe can be used to keep down weeds in the row.

## Did You Know That

It takes 30 gallons of water to fill the average bathtub, 30 gallons for the average shower bath, average lawn sprinkler uses 120 gallons per minute and 3/4" garden hose with nozzle uses 275 per minute?

In 1940 there were 37,300,000 dwelling units, of which 2,500,000 were vacant?

To budge a sticking drawer, soap or paraffin along the top and bottom sliding edges is a good first-aid measure, but in a serious case the edges may have to be sanded down?

Nearly a million families paid off home mortgage debts last year?

## Convectors Gain By Saving Space In Small Homes

No matter how large your home is, space is always a problem. But in the small, compact homes which are so popular today, the element of space affects the amount of furniture you can buy, how it is arranged, and your entire living pattern within the home.

That is why stationary units within the home are so important—they can permit flexible decoration or they can severely limit it. In many homes this problem of space is eased by the use of recessed convector-radiators, which are much more attractive than cast iron radiators and take up much less than half the space. Ideal with steam or hot water heating systems, these convectors can be recessed fully or partly into the wall, thus enlarging the space available for furniture and other accessories.

Small bathrooms especially utilize convectors to advantage. A certain number of units are essential to every bathroom, and all of them except the heating outlet must stand out from the walls. Thus the convector, when recessed into the wall, preferably beneath the window for

maximum heating dependability, allows greater freedom of movement. And the concealed heating element in a convector is an added note of safety—there are no hot surfaces which may cause bad burns.

Convectors also show up to advantage in every other room in the home. Attractive and streamlined, they can be painted easily to harmonize with any color scheme or decorative theme. They circulate only air within the room, and so they do not bring up dirty air from the basement, as some heating systems do. They maintain an even, gentle circulation of air which provides maximum heating comfort with a minimum of fuel consumption, because of their ready response to thermostat or damper control. And whether free-standing or recessed, they take up so little space that they make the smallest room seem larger.

D. D. T. kills all insects that infest potatoes, including the potato aphid, leaf hopper, flea beetles and potato beetle. It may be mixed with a fungicide to give complete protection with one application.

## ...WAS I DISGUSTED!



High Fuel Bills and Our Guests Always Complained that Our Home Was Either



TOO COLD



TOO HOT

UNTIL I HAD A REGULATED HEATING SYSTEM

INSTALLED BY  
**C O O P E R & Son**

540 Hood  
Phone 3-3603

## Foods Consumed by Healthy Plants Same as Humans Use

By JOHN H. HANLEY, PhD  
DID YOU KNOW THAT... the foods which plants consume in their normal, healthy growth are EXACTLY the same as the foods which we humans use? That flower, or tree, or vegetable, out in the garden is just as dependent upon sugars, starches, proteins and minerals for its existence as are we? The big difference lies in the fact that the growing plant makes all its own... out of gases from the air, water and minerals from the soil, and with the vital assistance of the sun. Here is the absolutely basic combination upon which ALL LIFE ON EARTH DEPENDS. Every animal, either directly or indirectly, owes its continued existence to the green plants of the field and forest. Healthy plants, gorged with their full complement of foods and minerals, form the absolute basis of a healthy people in a healthy civilization. That is why it is so important that the fertilizer the farmer puts on his fields be so constituted that it will pass along to our tables all the assorted chemicals we need for proper development of healthy bodies and minds. Even in our home gardens, we should give thought to using those fertilizer materials which will yield to the plants and, through them, to the human body, the things which they, and we, must have. Though the detailed deficiencies in soils vary greatly from garden to garden, and from section to section, there are a few rather fundamental ideas which apply most everywhere. (1) If you buy one of the so-called "complete" fertilizers for use on any kind of plants, it should be a well balanced one. Try to be sure that it contains not only the right amount of nitrogen, but that it includes enough phosphorus and potash, too... enough to make up for the lack of these two which is characteristic of the soils in your district.

By so doing, you are doing the first and most important thing to offset one of our prime garden problems, namely, to answer the question, "Why does my shrub (or tree, or flower) produce so few blooms and fruits?" Phosphorus and potash are very closely involved here. (2) The best fertilizers seem to be those which have AN ORGANIC base (poultry, sheep or other manures, or packing-house refuse). There are several outstandingly fine ones available. (3) What is usually lacking in the ordinary fertilizer, (and it must therefore be supplied by using booster mixtures or compost makers which contain same) is a well-balanced supply of the "minor" elements (minerals) which both healthy plants and healthy animals require. (4) It is ALWAYS wise to supplement the fertilizer with the regular, annual use of organic matter either dug in, or as mulches (peats, compost, leaf mold, manures, sawdusts, etc.).

MADONNA LILIES... at this season often begin to show signs of the disease which makes them look like scalped Indians by the time they open their lovely white blooms in June. Watch the ends of the leaves and, if they begin to look discolored and "watery", you've got it! It's the Botrytis disease, control for which should begin when the plants are five or six inches high. Use a dust or spray containing copper or ferbam, not once, but several times at ten-day intervals as the stalks stretch upward. This is also the time of year to put on your first dust or spray for those pests which draw the young foliage together at the tips of the stems of many garden plants (the leaf tiers). Best for

**CRANE**  
Plumbing & Heating  
FOR EVERY NEED

See us today about modern Crane plumbing fixtures—a new Crane heating system.

**Judson's**  
PLUMBING HEATING  
175 W. COMMERCIAL ST.  
"SHED SERVICE"

EXPERT WORKMANSHIP

Open EYE, and SUN.  
JOHNSTON POWER MOWER

Manufactured by Jacobsen  
A 4-Cycle Engine  
18" - 20" - 22" cut available

TERMS  
SALEM BOAT HOUSE  
100 Chemeketa Ph. 3-9083

FOR RARE & UNUSUAL DWARF EVERGREEN SHRUBS  
Shade Trees—Flowering Trees—Roses

VISIT  
**Nelson's Nursery**  
1/4 Mile East of Silverton on Marquam Road  
PHONE 4291  
Silverton, Oregon  
Ask About Our Economical Landscaping Service

Pay a bit more per pound - but LESS PER LAWN

SOW **Scott's** LAWN SEED

Each pound contains 3,000,000 seeds bursting with energy to build a velvety lawn. Economical because you need only half as much as ordinary seed.

1 lb. — \$1.45      5 lbs. — \$6.95

SPECIAL PURPOSE BLEND — for deep shade, drier soils, terraces, play areas — 1 lb. \$1.15.

LAWN FOOD — complete grass food, provides all nutrients needed for healthy growth. Economical.

Box feeds 2,500 sq ft — \$1.95  
Bag feeds 11,000 sq ft — 7.50

You can broadcast SCOTT'S by hand—but it's quicker, more economical with a SCOTT'S SPREADER — \$10.85.

**SALEM HARDWARE Company**  
120 NO COMMERCIAL ST. PHONE 3-4906

Beautiful Lawns COST LESS with Scott's

SAVE 41¢  
SPECIAL "TRY-A-PINT" OFFER!

**KEM-GLO**  
TRADE MARK  
STAY-WHITE

Regularly \$1.39  
Until May 31, 1950  
98¢

Try a pint of KEM-GLO, in white that stays white, at only 98¢. Today! A pint covers up to 50 square feet. 10 lovely colors in quarts and gallons. Paints in Stay-white only.

\$2.39 Qt. \$7.98 Gal.  
Get your PINT of KEM-GLO Stay-white at only 98¢, TODAY! Bring this ad to

**J. Paul Campbell Co.**  
Downstairs at R. L. ELFSTROM CO. Ph. 2-2493

PROTECT YOUR HOME...

... from excessive time and weather-wear... give it added charm and personality, by refreshing woodwork, siding and walls with economical DUTCH BOY PAINTS. Easy to brush, they dry to a beautiful finish in a fraction of the time usually required. Stop in and see our charming color charts today!

FREE PARKING AT ALL TIMES

**FRED W. SMITH LUMBER YARD**  
"Where the Home Begins"

State St., Four Corners Dial 3-8515

**GUTTERS AND DOWNSPOUTS**

WE WORK IN...  
● Aluminum  
● Galvanized Iron  
● Copper  
● Stainless Steel

**Salem Heating & Sheet Metal Co.**  
1085 Broadway Dial 3-8555

I'LL BET WE OFFER A SERVICE YOU CAN USE

Rototilling  
Lawn Care  
Lawn Planting  
Lawn Sprinklers Installed  
Landscaping  
Pruning, Trimming  
House Cleaning

Painting & Papering  
Carpentry  
Masonry  
Store Maintenance  
Display Arrangement  
Window Cleaning  
Floor Finishing, Waxing

**JIM HATHAWAY**  
Service Contractor Phone 3-4241  
All Work Done by Experienced Personnel  
ALL WORK GUARANTEED

**Planting Time**

PERENNIALS  
DELPHINIUMS, CAMPANULAS, PHLOX, AUBRIETIA, PYRETHRUM, CARNATIONS, ARABIS, ETC.

ANNUALS  
BEDDING AND VEGETABLE PLANTS  
GERANIUM AND FUCHSIAS

You are invited to come and look over our assortment of fruit, shade and flowering trees. Dwarf shrubs, flowering and ornamental shrubs.

**FERRILL'S NURSERY**  
1/2 Mile East of Keizer  
Phone 2-1307 Open Sundays