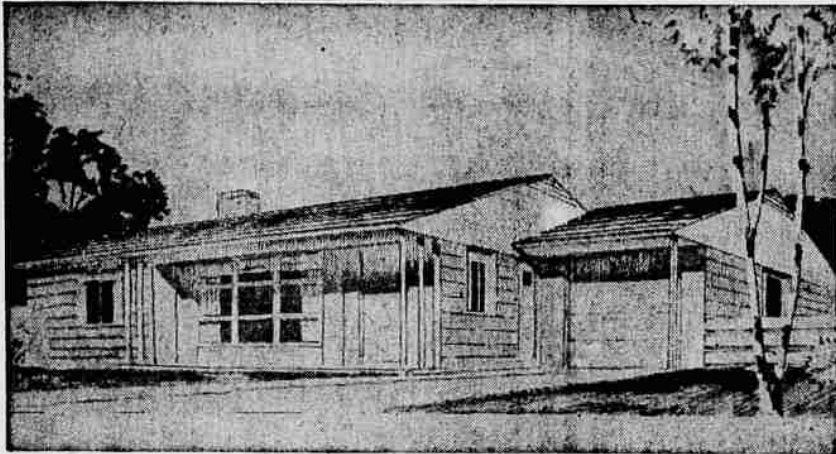


# Figuring on Modernizing or Building a New Home?

## Practical Design Keeps Home Cost Low

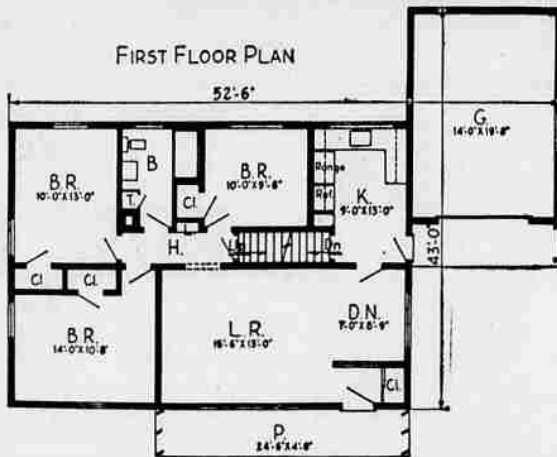


Snug-looking and low, this house was carefully designed to permit economical construction without neglecting any of the requirements for comfortable, enjoyable living. The dwelling has been selected by American Builder magazine, 30 Church St., New York 7, N. Y., as its Plan No. 36.

American Builder says that Walter T. Anicka, the architect, has adopted practical design, sound planning and simple framing as architectural principles and thus "comes up with a house that can be reproduced in permanent materials at an absolute minimum cost."

The large, divided front window is a feature of Plan No. 36. With the adjoining plywood panels, a striking central motif is created. Even more interest can be added by the use of dark, contrasting colors near the entrance way.

Contrasting materials also are used on the gable ends and the garage door. For the roof, the architect suggests shingles of a color which will harmonize pleasingly with other exterior



hues of the house and with the colors of neighboring dwellings. The dwelling has three bedrooms, each of ample size. The dining alcove is an extension of the living room, in the modern informal manner. The kitchen is

situated for convenience to the dining alcove. (Detailed estimating plans and a complete home planning packet of building information are available from American Builder, 30 Church St., New York 7, N. Y. Refer to Plan No. 36.)

## Save and Have Fun by Growing Your Own Plants

Every home gardener should know how to start seeds in a seed box, which florists call a "flat," and move the plants when large enough to their destined place in the garden.

In some sections whole gardens are made of such plants, usually purchased. But your own plants can be grown easily at far less expense, once a few simple methods are learned.

There are both advantages and disadvantages in starting seeds this way. It takes longer to grow either vegetables or flowers, because of the set-back which is caused by transplanting. But when the seed box can be started weeks before seeds could be sown outdoors, an earlier harvest

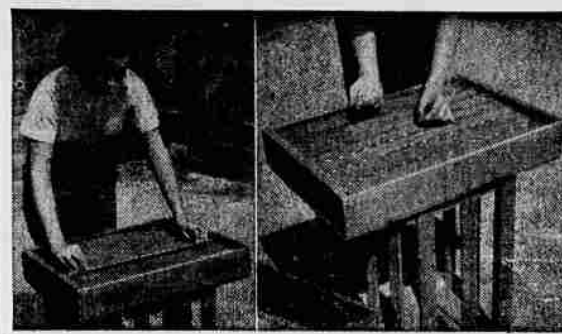
is possible, even though growth takes longer.

Some plants are difficult to transplant, all the vegetable root crops, for example; and many flowers such as poppies, and salpiglossis. But skilled operators can transplant almost any subject.

An advantage of the seed box method is that seeds go farther, since all can be grown to plants, if desired; and the plants are placed in the garden in the exact position where they are to mature, and require no thinning. It is easier to grow very small seeds and difficult subjects in a box; and when the weather is too wet, or dry, too hot or cold, the box can be moved about and sheltered from damage.

While professionals usually sow seed in one box, rather thickly, then transplant the seedlings when very small to pots, or another flat where they are widely spaced, the amateur can save time and make his plants grow faster by sowing the seed thinly in the first place and thinning out excess seedlings to give ample room for the others to mature, without being disturbed.

Precautions against disease should always be taken. This is easily done by using soil substitutes rather than soil. Sphagnum moss and vermiculite are substitutes widely used and easi-



Green Leaves Rich in Vitamins Easily Grown at Home

ly obtained. Both are sterile and sphagnum moss actually destroys fungus.

A thin layer of sphagnum moss, passed through a sieve, and spread over the soil in a flat,

can be used to sow the seed in; covering lightly with similar moss. This will prevent "damping off" and similar diseases, which sometimes destroy seeds as they are sprouting, or soon after.

The entire box may be filled with sphagnum moss, or vermiculite, and the seedling plants grown in these substances up to transplanting size. But in that case some fertilizer must be used when the plants have reached a sufficient size to need it.

This will be about when they have made their second pair of leaves, called the "true leaves." Stir a level teaspoon of balanced chemical plant food into a quart of water and use this to water the plants. One application weekly should be sufficient.

## New Terminal For Bus Line

Albany—Soon to rise on the site of the old John Foshay residence at Fourth avenue and Lyon street is the new Pacific Greyhound bus terminal building, to be erected by O. C. Karstens, who purchased the property two years ago from Mrs. Lee Roberts.

The new one-story structure will be of concrete block construction on a concrete slab 81½ feet long and 20 feet, 4 inches wide, accommodating an 11 by 16 foot barber shop, 18 by 20 foot restaurant and a 20 by 35 foot waiting room, the whole fronted by an 82 by 32 foot bus driveway, opening at the intersection and extending eastward, with its exit on East Fourth avenue.

Extending along the north side of the building will be an 8 foot marquee hanging over the driveway.

Estimated cost of the building is \$12,000. Karstens will retain ownership under 10-year lease to the Pacific Greyhound company. Start of construction work is scheduled for April 1. Construction will be done by Oliver Fritch. The building has been designed by L. D. Stokes, who will also supervise construction. The new terminal will also serve the Pacific Trailways Albany-Bend bus line.

**Improve Amity Streets**  
Amity—The city streets have received some improvement this week. A county grader was used to level the streets and in some cases a new coat of gravel was used. Besides a neater appearance the streets are more comfortable to drive over.

**MEN**  
...do you enjoy washing dishes?  
AUTOMATIC Dishwasher For Your Wife  
You'll never have to do dishes again!

Nothing Down - Pay Monthly  
**VENETIAN BLINDS**  
And Shades  
We also wash, re-lap, paint and re-stain your old Venetian blinds.  
**ELMER The Blind Man**  
Call anytime for Free Estimates  
Phone 3-7328  
1453 Ruge St. - West Salem  
We give S & H Green Stamps

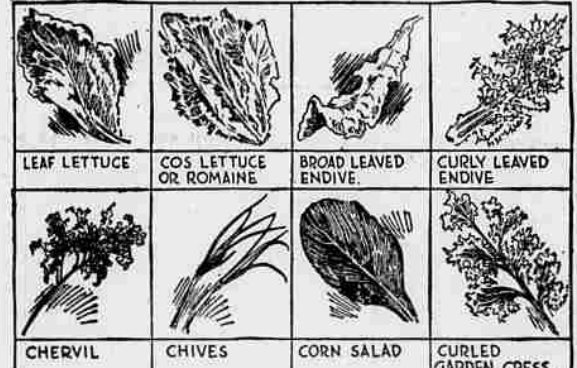
Use **Organic Fertilizer**  
The Right Way to Rebuild Soil  
Free of Weed Seeds  
Odorless  
**6 sacks \$5.00**  
Bulk—  
1 ton ... **\$10.00**  
2 tons ... **17.50**  
FREE Delivery Anywhere in Salem area  
**Phone 3-8127**

**FLOORS sparkle**  
with **SPEEDITE**  
Here's floor varnish that goes on easy—dries fast—wears long—gives you a gleaming finish—much easier to clean!  
**SPEEDITE VARNISH**

**FULLER PAINT STORES**  
W-P-FULLER & CO.  
171 S. Liberty

**PATTON - MINTO**  
PLUMBING & HEATING  
1122 S, 12th Ph. 26450

## Win Fame for Your Salad By Growing These Greens



Give Each Seed in the Outdoor Seed Box Room to Mature

Home gardeners have a wonderful opportunity to enjoy tasteful, tempting salads all summer long. The fact that green, leafy foods stand at the top of the list which nutritionists say you should eat daily, may be ignored, if you feel that way about nutritionists.

Healthful they may be, but salads also stand high with gourmets. Many a popular restaurant gained its reputation by specializing in a fine tossed salad with well-mixed dressing. This is a man's dish, and much more suitable than cooking, as a specialty.

The dressing is important, but this discussion is about the green leaves which you can grow all summer long, and pick fresh just long enough before the salad is eaten, for the leaves to be washed, dried and chilled. Lettuce starts the list, and not the tight, white, head lettuce of

spicy flavor which makes it a welcome ingredient of the bowl salad, and is grown easily in spring and fall. Curled garden cress thrives with ordinary garden culture and imparts a pungent flavor to the bowl salad. Watercress is highly prized and easily grown where there is a good supply of fresh water to keep it constantly moist.

Chervil is an aromatic plant somewhat resembling parsley but superior in flavor; and can be used both in the bowl salad and as a garnishment for meat. Like parsley, the seed is slow to germinate. Sow it with a few radish seeds to mark the row.

Chives is a most useful salad vegetable. It is a cousin of the onion of which the leaves are used. They have a delicate onion flavor, just enough to season the salad. Chives grow from seed easily, and a plant lives many years. It bears an attractive lavender flower and is often used as a border along the garden path.

At least two sowings should always be made of these leaf vegetables, one in the spring and one in midsummer for the fall crop; and as many as four sowings may be made with good results.

Some 20,000 pioneers pushed through Cumberland Gap in one season shortly after it was opened.

Endive comes in two types, broad and curly leaved. Both have a distinctive flavor. They stand both hot weather and frost. A late sowing should always be made to mature in the fall, when frost improves the flavor. Corn salad has a fresh and

**FRUIT TREES**  
with TWO, THREE and FOUR Varieties on the Same Tree  
**DWARF FRUIT TREES**  
EACH, PEAR, APRICOT, CHERRY PRUNE AND PLUM  
**DWARF FLOWERING TREES**  
PLUM AND CRAB  
A General Line of Shrubs, Dwarf Plants and Shade Trees  
OPEN ALL DAY SUNDAY — VISITORS WELCOME  
**FERRILL'S NURSERY**  
1/3 Mile East of Keizer Ph. 21307

**OPPORTUNITY KNOCKS!**  
Our beautiful PINE or CEDAR PANELING offers an excellent chance for you to really enhance the charm and personality of your recreation rooms. Easy to work with, conservatively priced, they're perfect for dens, playrooms, studies... and many other areas. Come in—select your requirements from our fine stocks today!  
**FRED W. SMITH LUMBER YARD**  
"Where the Home Begins"  
State St., Four Corners Dial 3-8515

**SAVE \$'s AT ALLEN'S**

**Bow Head RAKE**  
14 curved teeth made of heavy steel, with selected 5 ft. wood handles.  
Reg. 1.65  
Spec. **1.35**

**BUCKEYE LAWN MOWER**  
With 19-inch wheels Rubber Tires—5 cutting blades 16" wide. Adjustable for height of cut. Ball-bearing action.  
**NOW 19.95**

**GARDEN HOE**  
With 7 inch tough steel Blade—4 1/2 ft. Hard wood handles.  
**1.25**

**CABLE X ELECTRIC WIRE**  
14 x 2  
**3c ft.**  
When taken in 250 ft. carton lots.

**BALANCED FOR GRASS VIGORO**  
COMPLETE PLANT FOOD  
A PRODUCT OF SWIFT  
100 lb. bag ..... **5.00**  
50 lb. bag ..... **3.00**  
25 lb. bag ..... **1.75**  
10 lb. bag ..... **90c**  
5 lb. bag ..... **50c**  
1 lb. bag ..... **15c**

**Miller Falls CARPENTER'S PLANE**  
9 in. x 2 3/8" corrugated bottom. Reg. \$6.65.  
**4.98**

**Eagle Brand Single Pole Toggle Switch**  
**19c**

**Bakelite Duplex Receptacles SPEC.**  
**12c**

**1/4 H.P. Westinghouse MOTOR**  
Resilient Mount 5/8" Double shaft.  
1725 R.P.M.  
Reg. **10.95**  
13.25

**PEAT MOSS**  
Is the best mulching agent you can get for your lawn or garden. It keeps the soil from packing. GET YOURS NOW.  
10 lb. bag ..... **95c**  
100 lb. bag ... **3.95**

**PRODUCE HATCHET**  
Reg. 3.98 NOW **2.49**

**RURAL MAIL BOX**  
Approved Type 189 No. 1 Size

**we rent**  
floor sanders and edgers-polishers and buffers.  
low rates  
**ALLEN HARDWARE**  
836 N. COMMERCIAL ST. • SALEM, OREGON