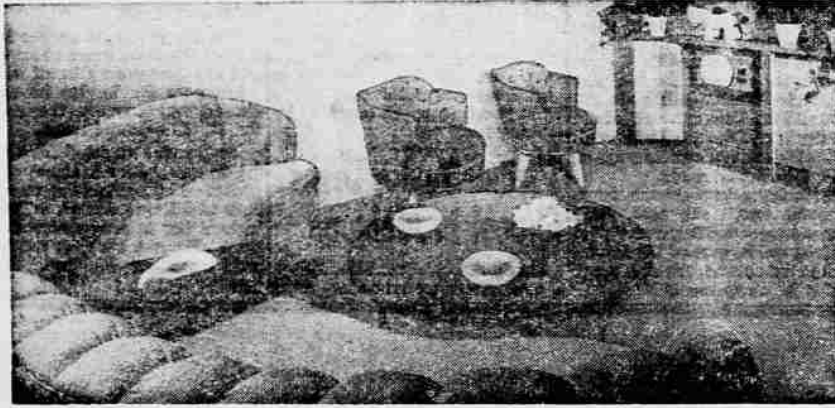
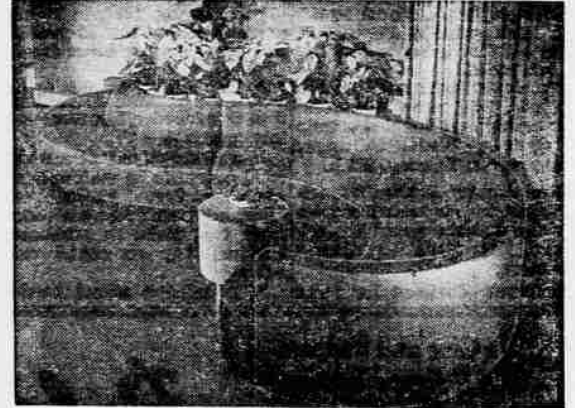


# Make Yourself Comfortable



**TELEVISION FURNITURE** is built on swivels so you can turn easily to watch the video — turn back for conversation. These smart upholstered chairs and divans were designed by Norman Fox MacGregor, Jr., for rooms where T-V is the focal point.



**NUCLEAR NOTE** — This dramatic serpentine grouping is one of the combinations possible with Harvey Probber's geometric components of squares, circles and rectangles.

By VIVIAN BROWN

Most of us use different yardsticks to measure our definition of a home. Some of us admire a Louis XV bedroom, crystal chandeliers and walnut commode. But we do not have to furnish to a king's taste to be happy. If we put things into our home that we like, we can give it beauty, charm and individuality down to the last bibelot.

It used to be that all homes looked alike. Mary Jones bought a three-piece living room suite because her best friend had one, and even though Mary's house expressed some of her personality, it lacked individuality.

Young brides no longer walk into a local furniture store like little sheep, and say, "Bah, may I see a suite of furniture, please?" Today they strive for individuality.

The galaxy of interesting woods, furniture designs and unusual fabrics would make any young bride think twice before she skipped the fun of planning every basic detail of her home.

There is so much to choose from that it is difficult to say that any one period, style, wood, or color leads the rest. This new urge to creativeness in the home has pepped up production and kept designers feverishly at drawing boards. It has created wider scope in everything.

One thing is certain, however. There is a trend toward "clean-shaven" furniture. Modern is close on the heels of the corner 18th century has held on the American furniture market. The variety of modern style furnishings makes it difficult at this point to determine who will be the Mr. Chippendale of this modern era — Robsjohn-Gibbins, Wormley, Noguchi, Eames, Probber, Pahlmann, MacGregor — each designer carving a niche for himself in the hall of furniture fashion fame.

American taste is changing. Though many still cling steadfastly to traditional furnishings,

modern style offers some compromise and moves ahead.

Harvey Probber offers a dramatic nuclear system of upholstered furniture with foam rubber construction based on components of squares, rectangles and circles. It can deal with any space requirement to create "custom tailored" architectural effects. Twenty basic seating units range from eighth and quarter circles to pie and wedge shapes.

William Pahlmann has put huge comfortable chairs, settees and coffee tables on wheels for beauty and practicability. He takes advantage of every wall space with tables and beds that pop out of recesses.

Almost every line shows movable storage units, because there never seems to be quite enough space, so there are flexible functional cabinets, dresser bases, commodes. One all-in-one unit combines desk, love seat, bed table, easel and drafting board.

Television, in many instances, replaces the fireplace as the focal point in the home and Norman MacGregor has designed unusually attractive swivel furniture for a better view of video.

There is modern and contemporary furniture to fit any pocketbook. You can even build your own. Prefabricated furniture, designed by Klaus Grabe, can be put together in a jiffy even if you've never been handy with hammer and shellac. There is a wide selection of interesting chairs, tables, desks. Chairs are laced with webbing in various colors. Several chairs can be placed together to form a settee. Add foam rubber cushions with bright fabric covers for more comfort.

Experts predict a trend toward "ranch type" furniture which might be a combination of provincial styles—American, English, Spanish or French.

Nylon upholstered furniture will make great inroads in your home, and it will be difficult to

## Haste Makes Waste In Furnishing Home

One thing to remember in furnishing a home is that you do not have to do it overnight. It is better to buy a few essential pieces for your bedroom, and leave the living room bare than to buy "for the meantime." Make up your mind to live for the rest of your life with any piece of furniture you purchase. Perhaps you will not. But if you have to, it will make it all the easier if you select it wisely.

resist. It is long wearing and has extreme resistance to abrasion. It is available in a variety of weaves and shades.

Adaptations of traditional furniture are in better taste than before. There is no trend toward fragility, but pieces have lost bulkiness. There is great stress on woods.

Swedish craftsmen offer the widest range of wood variations, perhaps. They employ their own birch, elm and oak, and more exotic South American woods such as Primavera (white mahogany) and avodire (yellow mahogany). They use Russian and French walnut and Honduras mahogany.

Fruitwoods, which give a fine rustic flavor, particularly to the popular French Provincial designs, are popular. More old favorites such as walnut, cherry and bird's eye maple, are being used in both traditional and modern lines.

When planning there are a few things to keep in mind so you can purchase wisely, and make your home as attractive as possible. Here are some pointers:

1. Look for the label identifying the wood in furniture. Examine the finish and make sure it has true smoothness. Check

drawers, joints, legs, and make sure they are not wobbly. Light woods are good for small rooms. When you mix light and dark woods, be sure they are compatible. Don't choose one end table of pine and another of mahogany to go on opposite sides of a sofa.

2. Furniture should be in scale. It should fit your room. Tall lamps should not be placed on tiny tables. The frame should balance the base. There should be some relationship between the lamp and other furnishings. Place your sofa and large pieces in the room first. Then place the smaller pieces around them. Large pieces should hug the wall. To place them cater-corner wastes space and is old-fashioned. Put a small table near every chair.

3. Make a basic color scheme and stick to it. Color must play an important role in your home decor. Once you play a bit with color combinations you will have no qualms about combining hues. You will notice that a firecracker red, Kelly green or yellow lampshade, chair, settee or drapery fabric must be just the prescription for that drab room.

If your room is small perhaps it is thirsty for bright paint tones. Try a lovely yellow or blue or green in any of the vibrant shades. Large rooms can take darker paints but little rooms need lighter tones. Before you choose colors, one color authority, Faber Birren, suggests deciding whether the rooms will be used mostly in the daylight or at night.

Blue appears darker under artificial illumination. Rose, peach, mauve, apricot or pale green are good wall colors for evening rooms. Some decorators add a bit of green so yellow will appear a clear yellow at night. Strong reds, oranges, browns, retain most of their daylight appearance under incandescent lighting.

## Heating Plant Fire Hazards Menace Home

Fire hazards resulting from unsafe installation and operation of heating plants are major causes of home fires. These hazards cause more than 100,000 fires a year, according to the National Fire Protection association.

One of the chief dangers is that soot, which frequently accumulates in chimneys and smoke pipes, will be ignited. This makes an exceptionally hot fire, from which chimney sparks can scatter profusely.

Regular cleaning of chimneys is recommended as a safeguard. Proper chimney construction also is essential. A house should be built so that no wood or other combustible material touches the chimney.

Because roofs are directly exposed to chimney sparks, asphalt shingles and other fire-resistant roofings are high on the list of protective building materials. Fire protection engineers point out that fire-resistant roofing also lessens the danger of sparks from brush fires and similar outdoor blazes.

Furnace smoke pipes leading to chimneys must have adequate clearance from ceilings and walls. Smoke pipe sections should be fitted together with metal screws to withstand possible "puffbacks."

Although the primary purpose of automatic temperature controls for heating equipment is to maintain a constant degree of heat indoors, controls of this kind also serve as effective protection against excessively high temperatures which might result from prolonged combustion during severely cold weather.

Onion juice helps point up the flavor of a casserole of macaroni and cheese.



**BUDGET ELEGANCE** — Prefabricated chairs with cotton webbing available in five colors, form a settee Klaus Grabe designed them and the coffee table — easy to assemble.



**THIS IS ULTRA** — Designed by the dean of American Modern, Robsjohn-Gibbins. Corner settees are upholstered in brown, flame and yellow striped fabric. Butterfly cocktail table and frames are of walnut. Perfect for contemporary home.