



She may step into your arms in a moment . . . if she's wearing your gift . . . a quilted robe to beguile. 10.95



On a cloud she'll be, with a fairy-tale feeling, for it's luxurious rayon crepe in Alabaster White, Teak Beige, Black Pearl . . . by Seamprufe. 32-38. 3.98.



A delicate accent for it's "Venetian" lace . . . to point up a pin-tucked bib and cuffed long sleeves. Stonecutter 75 denier washable crepe. Pristine White. 32-38 . . . 7.95

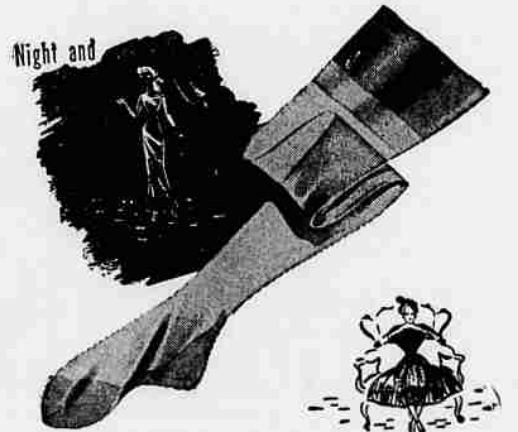


Perhaps Bermuda's her dream . . . then her dream is close at hand. Bermuda Sweaters turn the gift-trick. Colors, styles and sizes . . . so many . . . 3.95 up

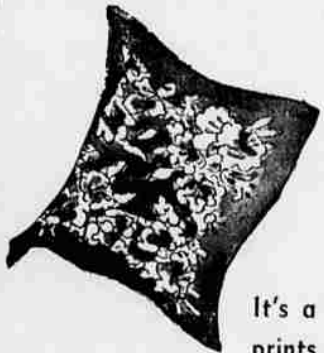
*if she's singing . . .  
her gift's from Johnson's*

and she sings for reasons so lovely, so piquantly lovely . . . for a JOHNSON'S Christmas.

**Johnson's**  
the Store for Ladies  
Salem, Oregon

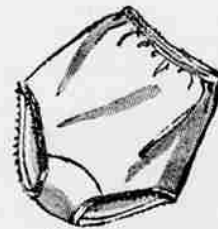


You can be sure she knows "proportional nylons of note" by Holeproof. Fascination colors: Beguile, a flattering taupe. Enchant, a rich copper. Sheer Holeproof nylons. 1.35-1.65



It's a winter necessity. They're in prints and solids, colors to enrich her every costume. They're Scarves of Silk and 89c to 3.98

Moonlight soft nylon jersey by Luxite. Bandeaux, nylon mesh lined, adjustable straps. Shell Pink, White, Black. 32-36 . . . 1.95



Pity not the dainty ankle, for it's turned so well in Nylon Anklets. You'll find they're ribbed, with turned-down cuff. 79c

**Yes, it's often hard to choose . . . so, if you're thought out, under HER tree put a JOHNSON'S GIFT BOND**

**She'll love it . . . she'll sing . . . for she'll choose her gift from JOHNSON'S.**

