

### Lobbying by Six Big Groups Gets Attention of House Group

By WILLIAM F. ARBOGAST

Washington, Dec. 6 (AP)—Six big groups may be the initial targets of a special house committee getting ready to investigate lobbying.

While the committee, headed by Rep. Buchanan (D., Pa.), has charted no fixed course and probably won't for several more weeks, Buchanan told newsmen it may be guided largely by a Library of Congress report on lobbying.

This report prepared by W. Brooke Graves of the legislative reference service, says: "Some of the fields in which lobbies have been or are now especially active" include "the tariff lobby; the natural resources lobby in its various forms; the real estate group, battling against any kind of public housing program; the air lines lobby; the agriculture lobby; and the dramatic struggle between the representatives of the dairy interests and the oleomargarine manufacturers."

Other active lobbies, the report continued, include those interested in business, education, health, labor, military and veterans legislation.

During the first six months of 1948, the report said, more than \$3,500,000 was spent on lobbying activities. The heavier outlays were said to have been made by groups interested in displaced persons legislation and in bills to repeal the tax on oleomargarine, and to provide a government medical service program.

During that period, the report said, nine groups or organizations had lobbying expenditures exceeding \$100,000 each, while eight others spent between \$50,000 and \$100,000 and 20 between \$25,000 and \$50,000.

"According to their own professed beliefs, as set forth in the statements made on the registration forms," the report continued, "practically none of these corporations are engaged in lobbying work."

"It would appear that all of them sit in their offices or in their hotel rooms and meditate, thinking pure thoughts, but never for a moment descending to anything so common and ordinary as lobbying . . . part of these protestations are a pose; many of them are obviously exaggerated, if not actual deliberate distortion of the truth."

The Congressional Library report did not mention the so-called "postal pay lobby." Buchanan declined to say whether his committee would give early attention to this group. Its members literally swarmed through the halls of Capitol Hill during the days the pay raise bill was under consideration and it was gener-

### Shah Turns Down Rosalind Russell

Los Angeles, Dec. 6 (AP)—The Shah of Iran turned down a date with Actress Rosalind Russell Monday, sticking to his policy of avoiding movie star entanglements.

The Imperial Majesty's advisors announced "with regret" that the 30-year-old Persian potentate couldn't accept the invitation from Carl Brisson, Danish father-in-law of the star.

The Shah, continuing his cold war tactics against the glamor capital, stuck to his statement he came here to inspect the Lockheed plant in suburban Burbank, main stop on his itinerary.

After entertaining Iranian editors in his party at lunch today, he flies to Sun Valley, Idaho, Wednesday for skiing, his favorite sport. He expected to stay a week, while the rest of his party will continue to Washington, D. C., Thursday.



I Discovered How To HEAR AGAIN IN 20 SECONDS

was in despair when I began to lose my hearing. Then one day—in just 20 seconds—I discovered how to hear again. Thanks to the new Beltone Phantomoid, there's NO BUTTON IN MY EAR. Discover how you, too, can hear again. Come in, phone or write for FREE booklet that tells all the facts.

**Beltone** MONO-PAC One-Unit Hearing Aid  
James N. Taft AND ASSOCIATES  
228 Oregon Bldg. Salem, Oregon

### Cheap Selling Auto Designed

San Diego, Calif., Dec. 6 (AP)—A lightweight car which will retail for about \$500 has been designed by T. P. Hall, San Diego development engineer.

The car is about the size of a postwar British Austin and has a top speed of 45 miles an hour and gas consumption of 45 miles to the gallon, Hall said. It

has been tested, he said.

The machine is 153 inches in overall length, has a 100-inch wheel base and 50-inch wheel tread. It is powered by a 10-horsepower engine, which drives through a fluid coupling.

It is built largely of aluminum alloy and plastic material and weighs 775 pounds.

Hall said there are several cars now in operation and the various prototypes have been driven several thousand miles in tests.

Hall was chief development engineer at Consolidated-Vultee

### Atwater Kent Leaves \$10,000,000 Estate

Hollywood, Dec. 6 (AP)—Party-thrower Atwater Kent left an estate valued at nearly \$10,000,000, executors of his will revealed Monday.

George Nolte and Harold Ash Aircraft Corp. for many years. He left the firm about two years ago to develop his present car, which he says is a by-product of the Flying Auto.

worth reported that income since Kent's death on March 4 totaled \$22,626, bringing a net balance on October 31 of \$9,130,971.

Kent, 75-year-old retired radio manufacturer, was known as the movie colony's number one host. He left \$2,000,000 to his estranged wife, \$1,335,000 to charity and education and thousands of dollars to such guests at his famous parties as Greer Garson, Edgar Bergen, Cobina Wright and Billie Burke.

Otto Graham of the Cleveland Browns has passed and run well

over five miles in four years of All-American football conference play.

\$\$\$ MONEY \$\$\$



4 1/2% Real Estate Loans  
Farm or City  
Personal and Auto Loans  
State Finance Co.  
153 S. High St. Lic. S-216 M 223

GUARANTEED WATCH — CLOCK and JEWELRY REPAIRING at REASONABLE PRICES The Jewel Box 443 State One door from Western Union

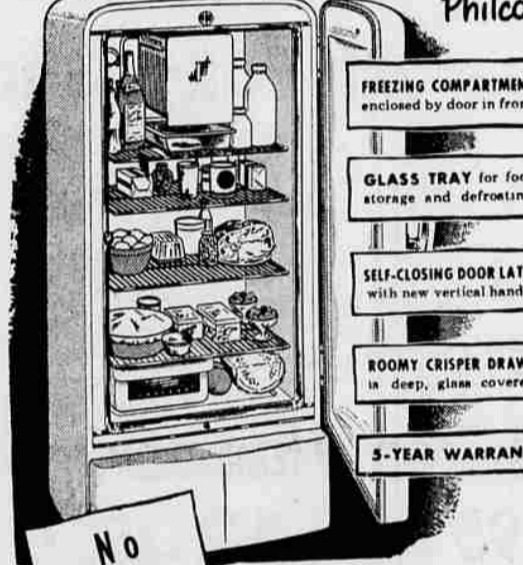
Roberts Bros. 177 north liberty

# GREATEST OF THE YEAR! DOUBLE GREEN STAMP WEDNESDAY

OPEN FRIDAY NITES TILL 9

Now only \$205<sup>50</sup> for this Genuine PHILCO

\$30 Less THAN FORMER LOWEST PRICE PHILCO MODELS

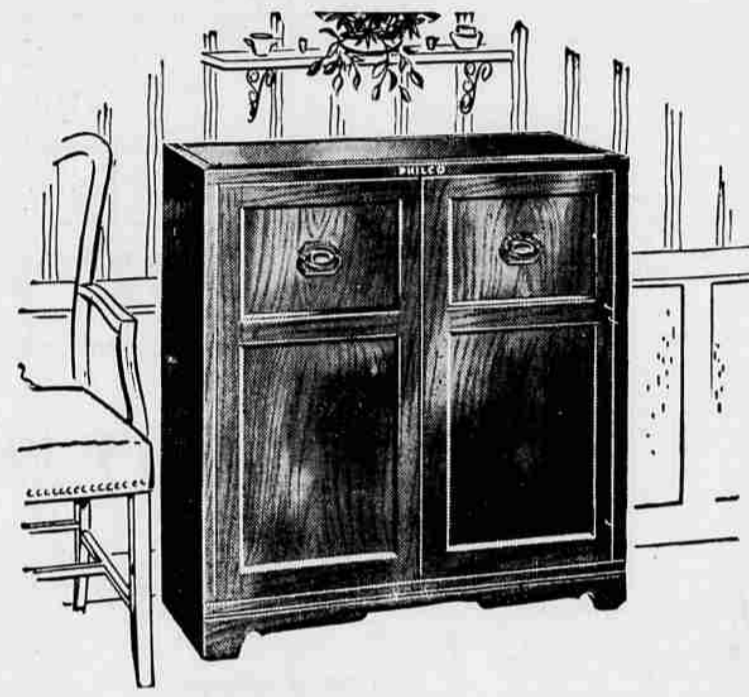


No Down Payment

Here's real value news—genuine Philco quality, modern features, big capacity—now at amazing low price. 7.2 cu. ft. size in the floor space of a "four". No matter what size or price refrigerator you want—see this new Philco first!

- FREEZING COMPARTMENT enclosed by door in front.
- GLASS TRAY for food storage and defrosting
- SELF-CLOSING DOOR LATCH with new vertical handle.
- ROOMY CRISPER DRAWER in deep, glass covered
- 5-YEAR WARRANTY

...and it's not a '6' but an over-size 7.2 cu. ft. Philco



TECHNICAL PERFECTION AND AGELESS BEAUTY \$279<sup>95</sup>

Beautiful Sheraton cabinet encases a triumph of radio engineering. Plays all records, all three speeds automatically with a single tone arm, to provide from seventy minutes to more than five hours' continuous music. Seven tubes, plus rectifier. New Philco super sensitive F. M. system. Tuned R. F. stage with three-gang condenser on F. M. and A. M.

Radios, downstairs



PLAY ALL RECORDS \$259<sup>95</sup> —OLD OR NEW

Ten-inch permanent magnet speaker provides better recorded music than ever before. . . . Gorgeous flame grain mahogany cabinet has beautifully matched crotch veneers offset by a panel of classic fluting. A. M. and F. M.

## PHILCO RADIOS

\$315<sup>00</sup> CONCERT STAGE IN YOUR HOME

The twelve-inch concert grand speaker combines quality and beauty of tone with a lovely piece of furniture. Ten tubes, plus rectifier. New Philco super sensitive F. M. Plays all records, all sizes, all three speeds automatically with a single tone arm. Luxurious mahogany cabinet.



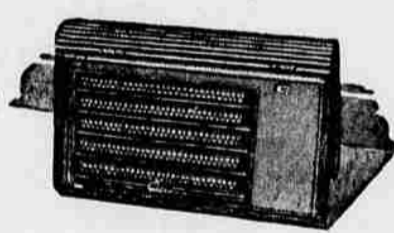
NO DOWN PAYMENT—ON APPROVED CREDIT



CONSOLE TONE \$39<sup>95</sup> in TABLE MODEL

Powerful permanent magnet speaker. Five tubes, plus rectifier. A. C. D. C. superheterodyne circuit. Unique design in mahogany plastic. Top-mounted sweeping dial for easy tuning is in clear plastic with gold brass trim.

LIBERAL TRADE-INS



A. C. D. C. TRAVEL RADIO \$24<sup>95</sup>

Has full performance sensitivity and selectivity, with five to ten times greater power. Rich brown plastic case is trimmed with genuine gold-tooled leather.

Think of it! NOW YOU CAN BUY A NEW HOME ELECTRIC SEWING MACHINE

"Like money in the bank!"



Enjoy new outfits every season . . . and save. It's so easy with the All-New NEW HOME. You just guide the material—your NEW HOME does the rest. See the distinctive new models today.

AUTHORIZED DEALER NEW HOME Sewing Machines. East Terms 20-Year Guarantee. Other Models From \$89.95

NO DOWN PAYMENT on approved credit

\$199<sup>95</sup> BENDIX De Luxe Washer

The new washer that has everything and does everything automatically . . . no work for you

- merely set the controls for desired time and right water temperature.
- rinses, drains, damp dries and fluffs clothes automatically
- requires minimum of soap.
- stops automatically at end of cycle.
- beautiful modern cabinet finished in high lustré de Luxe enamel.
- new water rater meters out exact amount of water required, saving time and money.
- reversible door can be set to open from right or left for your convenience.

