

Second Moon Eclipse of This Year Due at 6:20 Tonight

An eclipse of the moon occurs tonight, and if the weather is clear it promises to be a real show. It will be the second time this year that the earth has moved between the moon and the sun, and as in last April the eclipse tonight will be total. The eclipse time table follows: Total eclipse begins at 6:20 p.m. PST. Middle of eclipse at 6:56 p.m. PST. Total eclipse ends at 7:33 p.m. PST.

'Hot' Pineapple Case Goes to NLB

Portland, Oct. 6 (AP)—The Hawaiian Pineapple company has formally asked the national labor relations board to ban picketing of its pineapple barge at The Dalles.

Action on the petition, filed yesterday, may not come for weeks.

Gunther Krause, company attorney, said it might be several weeks "or longer" before the NLRB acted on the request to invoke the Taft-Hartley law's ban on secondary boycotts. The company contends its efforts to unload pineapples has no connection with the Hawaiian longshore strike.

CIO longshoremen from Portland halted the unloading last week when they raided the waterfront terminal at The Dalles.

O & C Advisory Group Renamed

Portland, Oct. 6 (AP)—Oregon California agency advisory board members have been reapointed with Frank Graham, Jasper, Ore., added to the membership.

Daniel L. Goldy, regional administrator of the bureau of land management, said the reappointments included Herbert J. Cox, Eugene; R. E. Dimick, Corvallis; George W. Peavy, Corvallis; and Charles A. Sprague, Salem.

The board advises on administrative policies for 2,500,000 acres of reversioned land grants in western Oregon.

'Gold Rush' Begins But Ends Quickly

Litchfield Park, Ariz., Oct. 6 (AP)—An unscheduled "gold rush" started and ended abruptly here today.

A speeding train set the stage for the modern '49ers. It ran over and ripped a postal money bag that had dropped from a second train.

Currency in 1, 5, 10 and 20-dollar denominations was scattered over an eight-mile stretch of railroad right-of-way.

Officers raced "prospectors" to the scene.

Deputy Grover Schoonover reported finding between \$700 and \$800 on a teen-age boy observed running from the tracks. Quickly a patrol system was set up to keep passers-by from the scene. Other deputies and peace officers searched for more of the money.

The money bag was consigned to the Litchfield Park branch of the Valley National bank by the Federal Reserve bank of Los Angeles. There was no announcement of how much money it contained.

Actually, the eclipse show is due to start at 3:50 p.m. PST when the moon enters the outside shadow. But such phenomenon will not have the effect of a bite being taken out of the moon. The moon will be back to normal at 7:33 p.m., but it will be 10:03 p.m. before it finally leaves the outside shadows. The moon will be just about full for the show tonight and full with the satellite blacked out for half hour or more many of the faint stars will appear to shine brighter.

Atwater said that the beginning of the eclipse will be visible generally in the western part of the Indian ocean, south-western Asia, Europe, Africa, the Atlantic ocean, the Arctic and Antarctic regions, North America except the northwestern part, South America and the eastern part of the Pacific ocean.

The end of the total eclipse will be visible generally in the western part of Africa, the extreme southwestern part of Europe, the Atlantic ocean, the Arctic and Antarctic regions, North America, South America and the eastern and central parts of the Pacific ocean.

'Good Teeth' Puppet Show Barred in State

Portland, Ore., Oct. 6 (AP)—A puppet show produced by the Good Teeth Council for Children of Chicago has been denied touring privileges in Oregon until it removes all reference to chewing gum, the state board of health disclosed today.

The board said that the good teeth council, in its traveling show, "recommended the use of chewing gum as a routine measure for the care of teeth."

The executive council of the State Dental association, in its report to the board of health, said chewing gum "is a confection with a high sugar content for its appeal and may thus contribute to dental caries. And reference to chewing gum constitutes an endorsement of commercial product entirely out of place in professional educational material."

Pickets Overturn Two Cars; Burn One

New York, Oct. 6 (AP)—Pickets overpowered police guarding an office of the strikebound Holmes Electric Protective Alarm service today, overturned two parked automobiles and set one on fire.

A witness said a "couple of hundred" men pushed aside the small detail of officers assigned to the strike detail. The damaged automobiles were not occupied.

To Query, 'Who Are You?' How Would You Answer?

Los Angeles (AP)—"Who are you?" Psychologists J. F. T. Burfental and Seymour Zelen of the University of California at Los Angeles asked that question of several hundred people at random, requesting the answer in a single sentence. They got some surprising answers.

More than 18 per cent considered themselves a name, responding "I'm Bill" or "I'm Susy." About the same number thought they were a job and answered "I'm a divinity student" or "I'm a riveter." More than 18 per cent replied "I'm a woman" or "I'm a man."

One replied, "I'm a woman, a co-ed, a daughter and a sister." The youngest girls played up their social status with such answers as "I belong to the best club in high school," or "I'm a police captain's daughter," the scientist found.

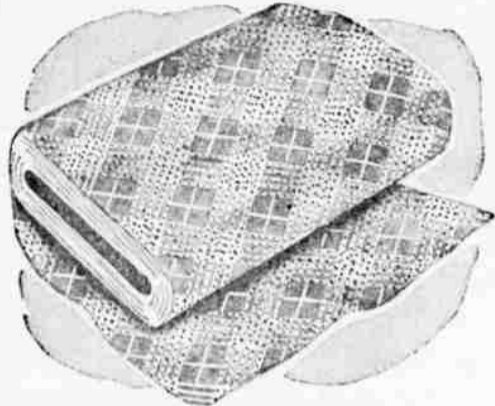
In general, younger persons identified themselves as a sex, mature women as housewives and men tended to identify themselves with their occupations.

PROOF!

YOU SAVE MORE AT

Montgomery Ward

THESE VALUES ARE PROOF OF THE MONEY YOU WILL SAVE BY SHOPPING AT WARDS! COME IN AND SAVE! BE CONVINCED! **FRIDAY AND SATURDAY ONLY!**



REG. 35c 80 SQUAL MARQUEL

Hurry! Sale ends Saturday. New fall patterns, fast colors. A rare buy! Shop early for best selection! **25c yd.**

REG. 29c CURTAIN MARQUISSETTES

19c yd. Limit 10 Yds.

Dotted and plain marquisettes in white and pastel shades. 42" wide (dotted white, 48"). On sale Friday and Saturday only!

SECOND FLOOR

Don't Miss These! NEW FALL COATS

20⁸⁸

- 100% all wool Twill Broadcloth!
- Newest fitted, flare-back and belted styles.
- Lovely new fall colors!

Just received from New York! You'll find style and quality you believed impossible at this tiny price! Roll-collars, button detail backs! Sizes 10 to 20. On sale Friday and Saturday only!



DRAPERY YARDAGE TO 1.98 YD.

Imagine buying 1.98 Pebble-tex, 1.69 floral gabardine, 1.59 chevron and sailcloth at this sensational price. All 48". Hurry! **97c yd.**

REG. 2.98 ORGANDY PRISCILLAS

2.27 40" x 81" Size

Another sensational Friday and Saturday special on Wards second floor. Permanent finish organdy! Deep ruffles! White only. Limited quantity.

SECOND FLOOR

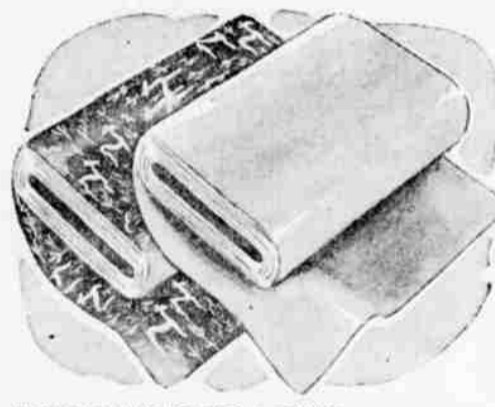
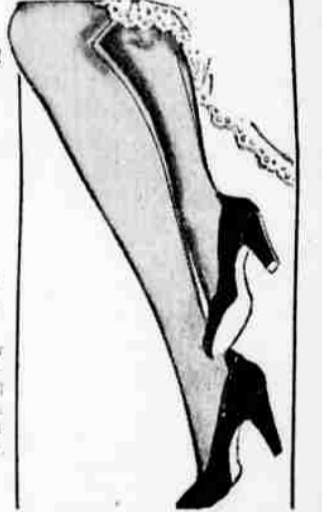
Friday and Saturday!

51 GAUGE NYLONS

77c

- Regularly \$1.00!
- All perfect quality!
- All newest shades!

Your choice of 15 or 30 denier, 51 gauge nylons at this sensational price... and believe it or not, ALL PERFECT QUALITY! Limit 3 pr.



DRESS FABRICS TO 1.19 YD.

Ginghams, chambrays, pique, dimity, lawn! Impossible at this price, but here they are. **3 yd. \$1**

50 ONLY MEN'S 11.95 RAINCOATS

8.97 While They Last!

Handsome tan cotton gabardine in comfortable raglan sleeve style. Sizes 34 to 44. Friday and Saturday only!

MAIN FLOOR

Hurry for These! BOYS' WARM SHIRTS

57c

- Reg. 1.29
- Sizes 4-16
- Warm Flannelite

Your chance to save on sturdy flannelite shirts for winter wear. Solid blue. Quantity limited.



DON'T MISS THIS SPECIAL OLD FASHIONED CHOCOLATE DROPS

Reg. 35c **25c lb.**

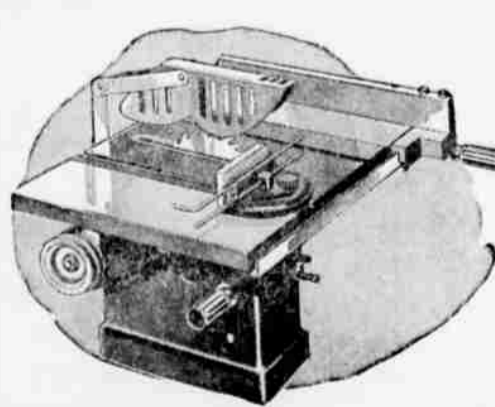
RICH, CREAMY CENTER WITH DELICIOUS CHOCOLATE COATING

FRIDAY and SATURDAY

at

Metropolitan
"THE STORES OF BETTER VALUES"

136 North Commercial Salem



SPECIAL! 8" BENCH SAW

Combination cross cut and rip blade. Cuts vertically up to 2 1/2". Table extends to 30x14". Tilts to 45". Friday and Saturday only. **2788**

NO. 12-2 NON-METALLIC CABLE

4.39 100 ft. Reg. 5.00!

Double strand inside wire at a tremendous saving. Underwriter approved!

No. 14-2 non-metallic cable now only **3.75** 100 ft.

BASEMENT



REG. 6.98 WESTERN SHIRTS

Wool and rayon gabardine* in choice of two colors. Sizes 14 to 17. (*23% wool, 77% rayon) 100 only at this price! Hurry!

397