

Exquisite Form
BRASSIERES

... sizes 30 to 40
cups AA, A, B, C



Style No. 505...

... of finest slipper satin ... stitched undercup ... elastic insert ... well separated ... Colors are ... white ... black ... pink ... Nile ... maize ... orchid ...

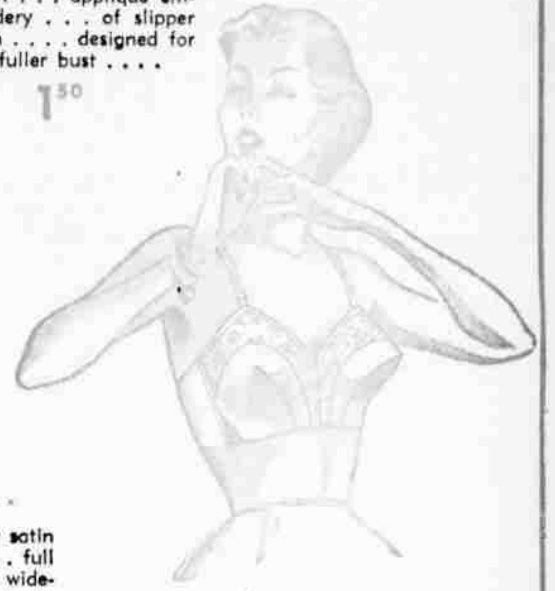
1⁵⁰



Style No. 215...

Double band ... elastic insert ... applique embroidery ... of slipper satin ... designed for the fuller bust ...

1⁵⁰



Style No. 425...

Strapless ... of slipper satin ... bone stay uplift ... full lastex back ... cups are widely separated ...

1⁵⁵

LEONS Proudly Present
Your ...

Exquisite Form

WITHOUT A DOUBT ... the finest fitting "bra" ... that was ever made ... and featured in the leading stores from coast to coast ... "Exquisite Forms" are styled for every woman ... firm support for the average size ... flattering new curves for the tiny figure ... and a firm silhouette for the fuller bust ... Different styles ... and all are designed to bring you "glamorous lines" under your new autumn fashions!

Style No. 966...

Plunging neckline ... over-stitched for even support ... elastic front gusset holds cups firmly in place ...

1⁵⁰



Style No. 1505...

Under-stitched (exactly like No. 505) but with full lastex under support ... of slipper satin ... for medium busts.

1⁵⁰



"Junior Miss" ...

In cup size AA ... designed to create more flattering curves for the smaller girl ... also available in cup sizes ... B ... C ...

1⁵⁰



"Nylon" No. 1506...

Exactly like 1505 ... only of fabulous "quick-drying" nylon ... one of the country's greatest brassieres ...

1⁵⁵

Style No. 185...

Classic plunging neckline ... with widely separated cups ... a split uplift strap ... insures even support ... slipper satin ... 4 colors ...

1⁵⁰



Exquisite Form
BRASSIERES

at ...

Leon's

234 N. Liberty

in

Salem