



Man Buried Alive, Rescued—Rescuers dig around Ben Rothbard, 36, apartment house owner who was completely buried under three feet of dirt. Rothbard directed the movements of San Francisco firemen and they were able to uncover his head within a few minutes. Rothbard was digging in an 8-foot deep hole, 10 x 15 feet wide preparatory to installation of a new sewer pipe when the sides gave way without warning and buried him completely. He was not seriously hurt. (AP Wirephoto)

NEWLY DEVELOPED AND INEXPENSIVE

New Blood Factor Test Cuts Risks in Childbirth

Chicago (AP)—The risks a pregnant mother runs of an abortion or stillbirth, or of the death or imbecility of her baby, have been reduced greatly by a newly-developed and inexpensive Rh blood factor test.

The test involves the use of albumin extracted from the blood of cattle.

In 1940, it was established that about 85 percent of human beings carry a substance in their blood known as the Rh factor. The remaining 15 percent lack it.

The lack is not a deficiency. It is merely a normal, inherited characteristic, like blue eyes or red hair.

The two types of blood, Rh positive and Rh negative are incompatible. When they are mixed, either through a blood transfusion or when the unborn baby's blood inherited from the father is different from that of the mother's, the Rh negative blood produces an antibody to destroy the Rh positive blood.

The antibody remains permanently in the blood in most cases. The same process applies to germs of disease and explains why immunity against typhoid or mumps lasts throughout life. It also applies to incompatible blood.

It has been estimated that 13 percent of all marriages bring together the required Rh negative wife and the Rh positive husband. But of all their possible children, half are likely to inherit the mother's blood type rather than the father's, in which cases there is no danger.

In December, 1947, Dr. Lewis K. Diamond of Boston, Mass., discovered that many Rh blood-matching tests were inaccurate. But the use of albumin in the test eliminates false results.

The Rh test consists in mixing the blood of the patient tested with blood of known Rh character.

If the red cells of the patient's blood begin to stick together under the microscope, the bloods are incompatible and the character of the patient's blood is thus established.

Human albumin also can be used in the test, but it is very expensive. The bovine albumin

used in one test costs about five cents.

Albumin, a protein, makes up about 2 percent of whole animal blood, and about half of the total proteins of the plasma.

It was first extracted from cattle blood by Armour and Company chemists early in World War II, when it was hoped that animal serum might offer a substitute for human serum in treatment of war wounded.

The technique of extraction was devised by Prof. Edwin J. Cohn and his associates at Harvard university. It was turned over to Armour to work out production problems. The company began marketing it last May.

The albumin test is important for all prospective parents or for those who need blood transfusions. Approximately 10,000 births a year involve the Rh factor.

If the condition is not known or prepared for, it may result in abortion or stillbirth, death or imbecility for the baby involved.

The condition can be controlled in many cases by complete substitution transfusion—i.e., the exchange of all dangerous blood of the newborn child.

Fresh Rh negative blood is pumped in as the infant's own polluted blood is pumped out. It must be done as soon after birth as the symptoms are recognized.

Attempts are now being made to find a drug which will destroy safely the Rh antibodies in the mother.

Belts Are Important
Don't belittle your middle by ignoring the fashion importance of belts. Dog-leash narrow, waist-embracers are highly popular—leather belts in narrow-to-creaselet width are brave with color and trim . . . and the jersey sash in woven or knit weights is used sash or cummerbund fashion to encircle the middle.



Souvenir From Wrecked B-29—Souvenir hunters found bean pickings at the scene of a B-29 crash near San Jose, after the big plane struck the ground and disintegrated. Here Philip Brancato (left), Herman Bittel and Ginger Harker display some of the larger scraps found near the scene of crash. Twelve crewmen parachuted to safety. (AP Wirephoto)

SALEM HOME FURN. CO.'s GREAT STOCK REDUCTION SALE

CONTINUES ALL THIS WEEK

We wish to thank our costumers for their fine support of our Stock Reduction Sale. Our stock is going down and soon we can start to work remodeling and decorating the interior of our store. However, we have enough left for several days of sensational value-giving.

SAVE ON EVERYTHING YOU NEED

OPEN FRIDAY EVENINGS UNTIL 9 O'CLOCK



Highlight VALUES!

Tall 25 1/2"
Table Lamps
488
Outstanding Styles in Quality Lamps

Chairs and Rockers
\$12.88

IVORY Curtain Rods
Single Rods 19c
Double Rods 37c
Extensions 14c

One Group Hosscocks
5.88
Red and Green

Innerspring Mattress
19.88
Full Size or Twin—St. Francis Cover Flexolator Top Matching Box Springs 19.88

Asst. Heaters
\$7.88

Floor Covering
6' INLAID Standard Gauge 1.49
Light Gauge 1.19
6' PRINTED Heavy ft. 56c
Light ft. 41c

Streamlined Carpet Sweeper
\$4.98
with Combed Brush



7-WAY FLOOR LAMPS

1-2-300 W. Bulb
3—25 W on arms
Lights in base

Complete with bulbs and shade.

\$9.98

MATTRESS SENSATION

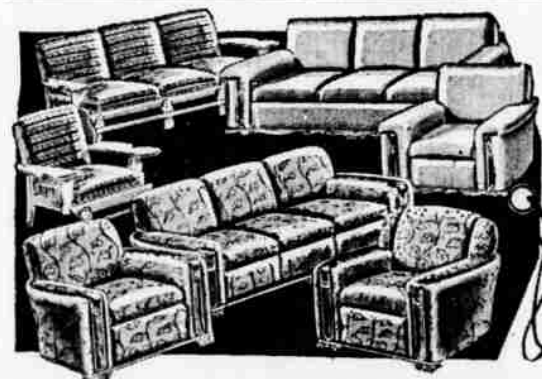
Beautiful damask cover.
Rich satin border. Layer on layer of heavy cotton on deep spring coils. Pre-built edge prevents sagging.

A \$59.50 Mattress for only

\$39.95

Box Springs to Match \$39.95

and we give Green Stamps, too



2 Pc. Living Room Sets Feature Values

\$259.50 MOHAIR FRIEZE SUITES. Choice of modern or conventional styles. Deep coils. Popular colors. \$199.88

ONE ONLY LEFT of these rich velour suites. Reg. price was \$219.50. Money colored honey. \$139.88

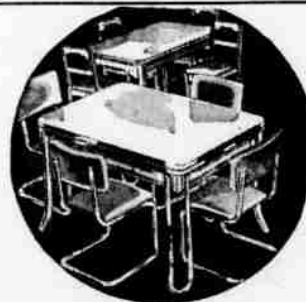
MAPLE ARM SOFA. One piece only Springs in cushions. Also one love seat and chair set. \$59.88

VELOUR OR TAPESTRY COVER Divan with Flexolator springs. A smash value at only \$69.88

DAVENO AND CHAIR SETS. 2 only Rose Frieze and Turq. velvet. 2 pc. \$159.88

5 Pc. Bedroom Suite

- Limed Oak 5 pc. Set sturdy construction was \$189.50 **\$139.88**
- Walnut Waterfall Large set. lge. mirror **\$149.88**
- Early American 5 pc. Maple finish **\$119.88**
- Grey or Toasted Almond 5 pc novelty set Your daughter will like this **\$139.88**
- Waterfall Dresser Walnut Veneer **\$34.88**



5 Pc. Dinette

Chrome Legs, Hardwood Top, Red Leatherette Chairs **49.88**



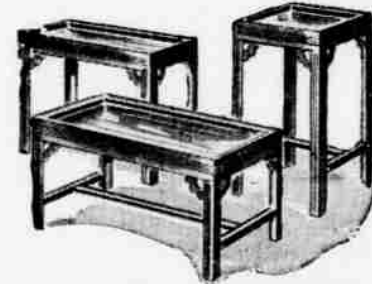
3 Desk Bargains

- No. 1 Walnut Veneer Waterfall for only **39.88**
- No. 2 Red Mahogany finish 18th Century style **39.88**
- No. 3 Maple Finish Early American style **39.88**



PLATFORM ROCKER \$39.88

Others from \$19.88



MODERN OCC. TABLES

Walnut finish End Table, Lamp Table, Coffee Table **\$6.89**



Pottie Chair Complete with Vessel \$4.88

- Nursery Chair **3.49**
- Hi-Chair **9.98**
- Won't Tip



Knitted Covers

Figured pattern in wine or blue. Beige ground, floral pattern.
For Sofa . . **\$7.88**
For Chair . **\$3.98**



CARD TABLES

3.98
Metal cross braces, double braced legs, washable top. \$5.95 value.

WE GIVE GREEN STAMPS

ALL QUANTITIES LIMITED

SHOP EARLY

SALEM HOME FURN. CO.

137 SOUTH COMMERCIAL ST.

