

# Montgomery Ward

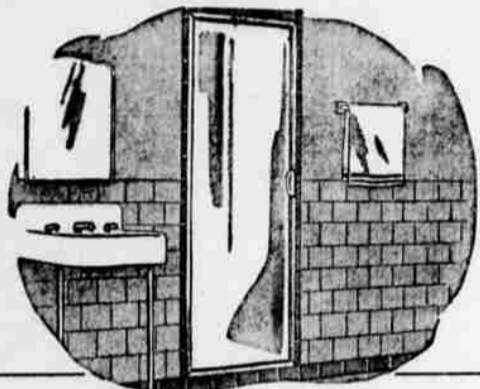
155 North Liberty

Phone 3-3191

Prices Slashed! Tremendous Selection! Many Un-advertised Specials!

**BIGGEST EVER!**

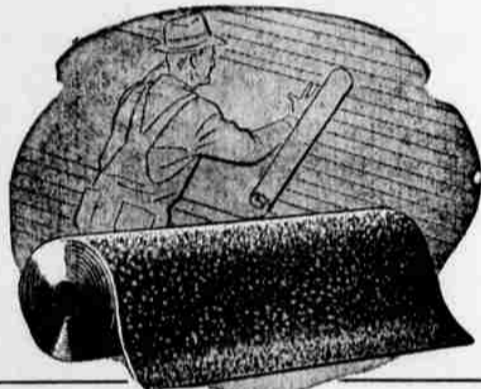
## HOME OWNER'S SALE!



**REG. 45c ALUMINUM WALL TILE REDUCED!**

In both quality and price, you can't beat Wards rustproof aluminum wall tile. Lasts long, won't crack or chip. Keeps walls looking sparkling bright for years. In many colors.

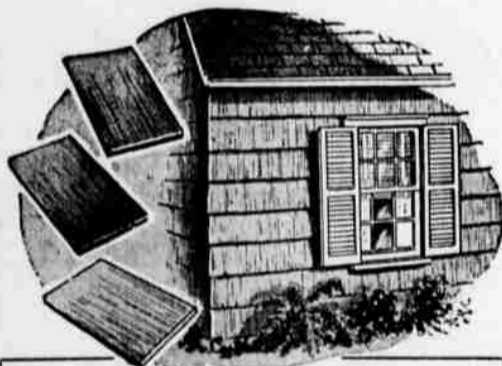
**39c**  
sq. ft.



**REG. 3.49 90-LB. ROLL ROOFING!**

Insure your home now of greater roof protection with extra heavy roll roofing. Made of ceramic-surfaced asphalt, it's attractive, fire-resistant. Roll covers 100 square feet.

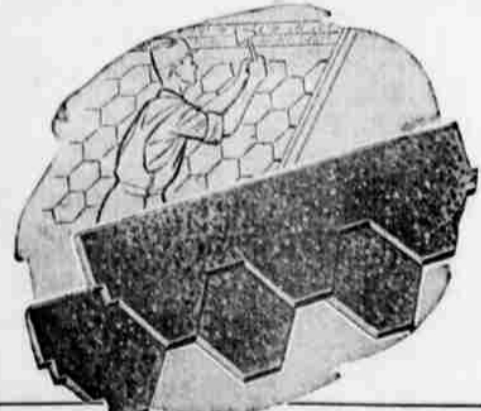
**2<sup>88</sup>**  
Roll



**Reg. 15.95 Red Cedar Shake Siding Shingles!**

Double course installation gives you a warm, tight wall! For this price you get enough inner-course shingles and outer course shingles to cover 100 square feet!

**12<sup>50</sup>**



**REG. 6.59 HEXAGON SHINGLES REDUCED!**

3-tab hex priced for big savings! Ceramic-surfaced! Asphalt for better looks, longer wear. Resists fire, fading, cracking. Your choice of color. Square covers 100 sq. ft. Buy on terms!

**5<sup>88</sup>**  
sq.

### Super House Paint

Regular 4.98 **4<sup>58</sup>** Gallon in 5's

Give your home a coat of "Super," the best paint that money can buy! : : : Get it now while low regular price is cut and save more! "Super" goes on smoothly, easily—has greater hiding power and higher coverage. A gallon covers 600 sq. ft. "Super" is self-cleaning, stays bright, white for years! Laboratory tested 8 ways!

REGULAR 5.10 GALLON SALE-PRICED ..... **4<sup>68</sup>**

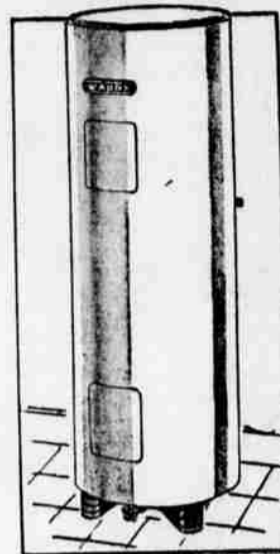


REG. 99.50  
ELECTRIC WATER HEATER!

**77<sup>95</sup>**

On Terms: 10% Down, Balance Monthly

Wards' Supreme double element hot water heater offers carefree dependable efficient service for years to come. Ask Wards for details now! Completely automatic; 42 gal. capacity.



SALE! REGULAR 57.50 SHOWER STALL REDUCED!

**50<sup>88</sup>**

On Terms: 10% Down, Balance Monthly

Use in rural homes or as extra shower in basement, garage. White enameled metal. Interchangeable walls; all fittings, curtain, rings included. Just requires 2 sq. ft. floor space.



**1.38 GLOSS ENAMEL CUT-PRICED**  
Quart **1<sup>28</sup>**  
Gal. 4.28

Bright, tough, washable enamel. Perfect for kitchen or bath. ● Semi-Gloss. Qt. 1.18, Gal. 4.18



**REG. 1.25 PORCH & DECK PAINT**  
Reduced to **1<sup>14</sup>** Qt.

Withstands severe weather and hard wear. Resists chipping, peeling. ● Reg. 4.35 Gal. 4.98



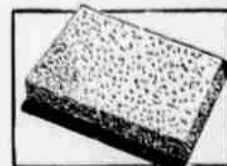
**1/3 H.P. PORTABLE SPRAYER**  
Ask about terms **70<sup>65</sup>**

A perfect sprayer for home and farm maintenance or light shop use. Price includes hose and gun.



**REG. 1.98 PURE BRISTLE 3 1/2-IN. BRUSH**  
**1<sup>78</sup>**

Bristles set solidly in rubber. Balanced handles. Easy-to-use. Reg. 85c 1 1/2 in. Brush ..... 77c



**INSULATE WITH ROCK WOOL BATTS**  
Reg. 3.29 **2<sup>88</sup>**

Cut fuel costs up to 30%! Easy to install. Fireproof, verminproof! Carton covers 40 square feet.



**19.95 VENTILATOR FOR KITCHEN!**  
**17<sup>88</sup>**

Here's extra comfort in your kitchen this summer. Fit it in the ceiling over your stove. Reduced!



**REG. 8.95 RANGE COMBINATION**  
UL, REA Approved **7<sup>98</sup>**

Both main and branch fuses in a single cabinet. 115-230-volt 80-amp 2-wire solid neutral.



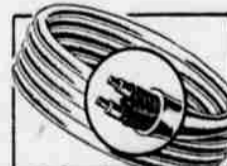
**REG. 2.29 KITCHEN LIGHT FIXTURE**  
**1<sup>88</sup>**

Snow-white glass on a gleaming chrome holder. Takes a 150-watt lamp. 7 1/2 inches wide.



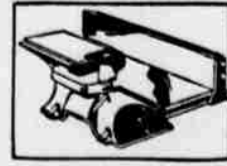
**SAVE! 24c TOGGLE SWITCH**  
Single-pole **19<sup>c</sup>**

With long, easy-grip toggle. Use up to No. 12 wire. UL, REA appr. ● Reduced! Toggle Plate 8c



**NON-METALLIC CABLE REDUCED TO**  
100-feet 14/2 **4<sup>50</sup>**

Copper conductors, tough insulation. Approved by UL & REA. ● 100' 12/2, now only ..... 6.06



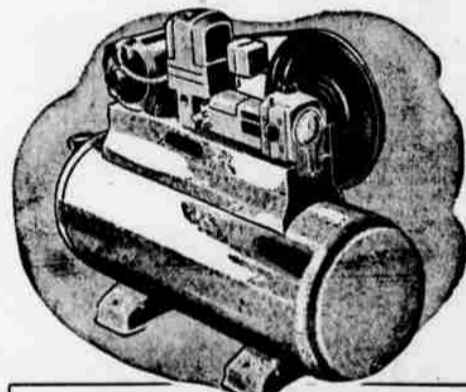
**4 1/2-IN. JOINTER**  
REG. 44.95 **24<sup>88</sup>**  
Use your credit

Outter head balanced for precision. Cuts to 5/16" stock up to 4 1/2" wide. Has gauges.



**REG. 75c ASBESTOS ROOF COATING**  
Gal. in 5's **66<sup>c</sup>**

Renews and resaturates felt, composition roofs. Lasting protection . . . adds years to roofs.

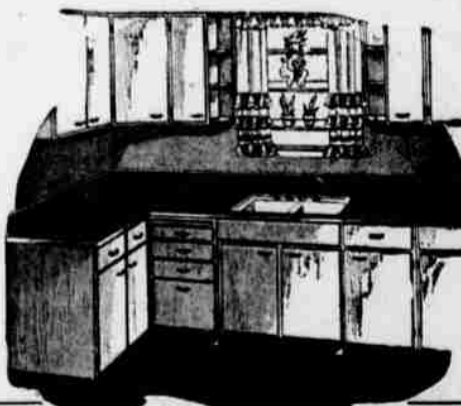


**RECIPROCATING PUMP WATER SYSTEM**

An automatic water system complete with tank and controls. All moving parts run in oil for smooth, quiet action. 350 gal per hr., 22-ft. lift.

**88<sup>88</sup>**

On Terms: 10% Down, Balance Monthly



**UNPAINTED WOOD KITCHEN CABINETS!**

Save money! Assemble and paint these cabinets yourself. Wide range of styles, sizes. For serviceable, attractive kitchen.

**10% OFF**

On Terms: 10% Down, Balance Monthly

**DRASTIC REDUCTIONS ON GALVANIZED PIPE, SOIL PIPE AND FITTINGS : : : IMMEDIATE DELIVERY!**

USE YOUR CREDIT...ASK ABOUT WARDS CONVENIENT MONTHLY PAYMENT PLAN