

# Strange Picture of Old Almanac Gets Explanation

By J. HUGH PRUETT

(Astronomer, Extension Division, Oregon Higher Education System)  
 Mystery hovered around the old medical almanac that used to hang on the kitchen wall in our childhood days.  
 Just inside the front cover there stood a partially dissected man, completely surrounded by a veritable menagerie consisting of 10 animals, a pair of balances and a lone woman—one for each month.  
 From these creatures lines ran to various parts of the man's anatomy.

From the lion, the directing arrow extended toward the man's heart. It was vaguely explained that from July 21 to August 21 the zodiacal constellation of Leo, the Lion, was dominant, and the "sign is in the heart." With the sign so placed, certain undertakings were supposed to be successful; others, disastrous.

There is a general mixture of astronomy and astrology in all of this. Since professional astronomers for centuries have not dealt in astrology—occasional statements to the contrary notwithstanding—let us keep the two separate.

The motion of the earth in its journey around the sun is detected in several indirect ways. One is the apparent annual journey of the sun eastward entirely around the sky among the various star groups (constellations).

We cannot see the groups in which the sun is tangled at any certain time, but it is easily calculated where it is. At present the constellation Taurus, the Bull, is low in the west at night-fall. A month from now it will be impossible to find this group anywhere in the sky all night since the sun will seem to be right in it. The sun's apparent motion eastward among the stars is 30 degrees each month, thus completing the 360 degrees around the entire sky in 12 months.

The ancient star gazers knew well this annual solar motion and divided the stars among which it moved into 12 constellations, all of them supposed to outline the animals for which they were named. The sun is

thus in each approximately a month.  
 . . .  
 The strip of sky 16 degrees wide with the sun's annual path in its center was named the zodiac (the circle of animals) and equal sections of this, entirely around the sky, the 12 "signs" of the zodiac—the creatures of the almanac.

When the plan was put into effect by the Greek astronomer Hipparchus about 150 B.C., the first month of spring—starting around our March 21—found the sun in the constellation of Aries, the Ram. During the 21 centuries since then, procession has moved the vernal equinox approximately 30 degrees westward among the stars so that now during the same month old Sol swims among the Fishes. Although this group is the constellation of the Fishes, it is still called the "sign of the Ram"—evidently for the sake of old times.

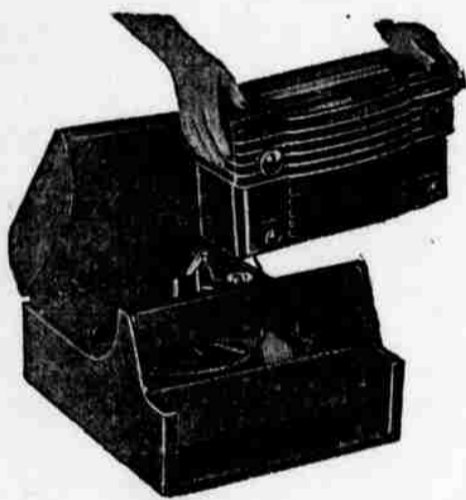
**TOP SOIL**  
 and  
**FILL DIRT**  
 Phone 35737 or 39648

## CASH TALKS

and you save at Woodrow's when you pay CASH for Willard Batteries, Seiberling tires "with full road hazard guarantee" Nason paints, auto glass and unpainted furniture.

R. D. Woodrow Co.  
 450 Center St. Phone 22476

**This Is Just One**  
 Of the great  
**Westinghouse**  
 Models reduced over  
**50% AT HEIDERS**



Automatic radio-phonograph with its LIFT-OUT, carry about radio. Nothing like it anywhere; fine cabinet, automatic changer handles 12 records. Lift out the radio . . . plug it in anywhere!

Originally \$109.95  
 NOW  
**49.95**

**Heider's**  
 back of every sale...  
 A DISTINGUISHED SERVICE RECORD

# Montgomery Ward

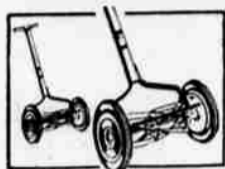
155 N. Liberty

Phone 2-3191

**WARD WEEK**  
 Now in Full Swing

**YEAR'S LOWEST PRICES!**

**WARD WEEK SPECIALS**  
 Check them all



REG. 17.95 WARDS  
**LAWN MOWER**  
 Cast-iron frame **15<sup>44</sup>**

10 1/2" wheels, semi-pneumatic rubber tires, 5 crucible steel blades. Enclosed gears, wheels.



REG. 41.95 HAWTHORNE  
**BICYCLE**

Boys' **36<sup>88</sup>**  
 Girls' Models

A champ among bikes! Equipped with kick stand, chain guard, big "Air-Cushion" balloon tires!



SALE! 15.45 SEAT  
**COVERS!**

Sedans **13<sup>88</sup>**

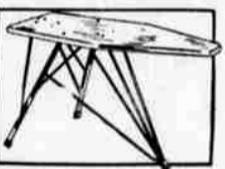
Wards Best quality! Choice of colors: Green, Maroon, Blue!  
 ● Cps. 6.66 ● Fr. Seats 7.88



26.95 ELECTRIC  
**MIXER**

Ask about **21<sup>88</sup>**  
 Terms

High quality mixer at low cost! It whips, beats, mixes; has 2 bowls, juicer and recipe book.



6.25 IRON TABLE  
**WARDS BEST!**

Won't creep! **4<sup>97</sup>**

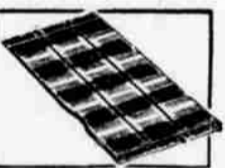
100% automatic, best construction! Wood top won't warp; rubber-tipped steel legs.



11.45 TUBULAR STEEL  
**VELOCIPEDE!**

Now Reduced! **10<sup>68</sup>**

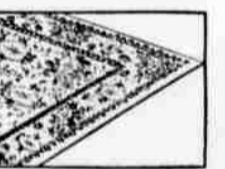
Riveted spoke ball bearing 16" front wheel; adjustable steel seat. ● 20 size, Reg. 12.95...11.68



REG. 1.59 RUSTIC  
**PLAID RUGS**

22 x 34 inches **1<sup>34</sup>**

Sale Ward Week only! Colorful cotton scatterers—green, red, rose, blue plaids! Reversible!



REG. 10.45 WARDOLEUM  
**9x12 RUGS**

Heavyweight **8<sup>44</sup>**

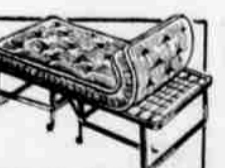
Save now! Heavy printed enamel felt base rugs! Choice colors! Tiles, marbles, and florals!



1.75 DECORATIVE  
**ENAMEL**

Quart **1<sup>44</sup>**

Dries in 4 hours to hard, glossy finish. Resists peeling, cracking.  
 ● Reg. 4.10 Gallon .....5.58



REG. 36.90 FOLDAWAY  
**OUTFIT**

Full 39" wide **29<sup>88</sup>**

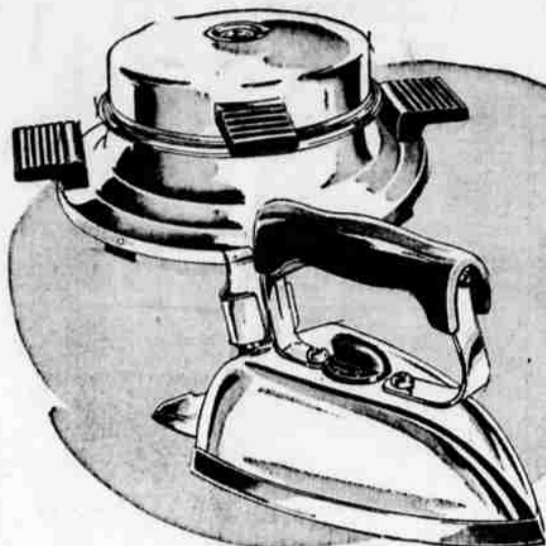
Opens into 74" long bed—folds with innerspring mattress and bedding for easy storage.



REG. 19.95 MODERN  
**TABLE RADIO**

Ask about terms **17<sup>88</sup>**

Smart appearing... top performing! Airline's sweet-toned table radio with circular dial. Brown.



**SPECIAL PURCHASE SALE!**  
 COMPARE AT 5.95 and 6.95

Automatic Iron **3<sup>97</sup>** Waffle Iron **4<sup>44</sup>**

Buyer's scoop! . . . YOU SAVE AT LEAST \$2 on each! Iron has fast-heating element, fabric heat-selector, aluminum sole, shaped handle, back rest! Waffle iron has chrome finish, 6" aluminum grids, and dial indicates when to pour batter!

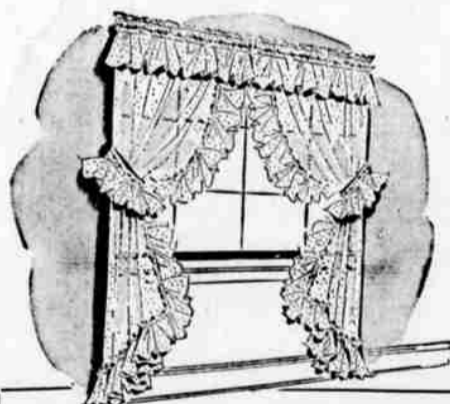


Farmers! Truckers! Contractors!  
 Big Drum Lot Oil Sale, Buy Now!

in 55-gal. or two 30-gal. drums **68c** gal.

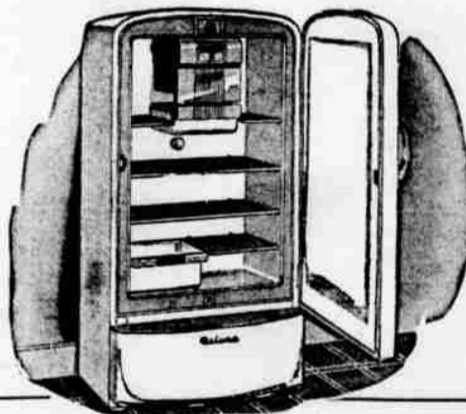
Order your season's supply of oil now, get Big Drum Lot savings! Wards Vitalized oil—Premium grade. Gives your equipment better lubrication! \*Fed tax inc.

● 30-gal. drum 73c\* gal. ● 5-gal. can 4.97\*  
 ● 2-gal. can 1.78\* ● Case, 24 1-qt. cans 5.77\*



REG. 1.98 PEBBLE DOTTED PRISCILLAS

An unusual value at this sale price! Fine cotton marquisette is showered with tiny pebble dots; closely woven! Dainty ruffles add finishing touch! Ivory only. Ea. side 34" by 81". **1<sup>68</sup>** pr.



WAS 224.95—7.5 CU. FT. DELUXE M-W!

Compare M-W's features and low price! Frozen food storage; Food Freezer for meats; Porcelain Food Freshener; famous M-W Sealed Unit! On Terms: 15% dn. 21 months to pay **199<sup>88</sup>**



SALE! DISH CLOTH  
 NOW 6 FOR

Cannon Quality! **43c**

Cotton knit, a light but serviceable grade . . . gives good wear. Woven multicolor stripes. 15x17".



REG. 29c COTTON  
**FLOUR SACK**

Bleached **4 for \$1**

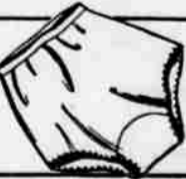
Absorbent cotton sacking, open-ended, laundered, ironed. For dusting, polishing, many other uses.



REG. 2.29 GIRLS'  
**DENIMS**

Below budget price! **1<sup>99</sup>**

Yours at a saving—buy now! Blue or red denim to match your jeans. Rubber soles. 8 1/2-9.



REGULAR 59c BEAU  
**DURA BRIEFS**

Of Spun-lo Rayon **44c**

Cut for free, smooth fit! Spun-Lo knit rayon needs no ironing, washes easily. Pink, white, 32-40.



REG. 5.98 TEAM MODEL  
**JACKET**

Baseball Favorite! **5<sup>44</sup>**

Lustrous cotton and rayon in a twill weave, comfortable support. Two-tone school colors. 6 to 30.



2.69 BOYS' DENIM  
**TENNIS SHOE**

Reduced for this sale! **2<sup>34</sup>**

A playtime pal designed to give smooth fit, comfortable support. Buy now and save! In sizes 1-6.

**SHOP WARDS 'TIL 9 EVERY FRIDAY NIGHT**

- MAIN STORE
- FARM STORE
- NEW TIRE STORE

USE WARDS MONTHLY PAYMENT PLAN . . . TAKE ADVANTAGE OF THESE WARD WEEK CUT-PRICES