

# Radio Programs

**Friday—P. M.**

KSLM	KGW	KEX	KOIN
8:00—Newspaper	Stars	News	News
8:15—Capt. Midnite	Stars	News	News
8:30—Tom Mix	Stars	News	News
8:45—Tom Mix	Stars	News	News
9:00—Newspaper	Stars	News	News
9:15—Studio	Stars	News	News
9:30—Crime Club	Stars	News	News
9:45—Crime Club	Stars	News	News
10:00—Newspaper	Stars	News	News
10:15—Studio	Stars	News	News
10:30—Crime Club	Stars	News	News
10:45—Crime Club	Stars	News	News
11:00—Newspaper	Stars	News	News
11:15—Studio	Stars	News	News
11:30—Crime Club	Stars	News	News
11:45—Crime Club	Stars	News	News
12:00—Newspaper	Stars	News	News
12:15—Studio	Stars	News	News
12:30—Crime Club	Stars	News	News
12:45—Crime Club	Stars	News	News

**Saturday—6 A. M. to 4:45 P. M.**

KSLM	KGW	KEX	KOIN
6:00—Newspaper	Stars	News	News
6:15—March of Time	Stars	News	News
6:30—March of Time	Stars	News	News
6:45—March of Time	Stars	News	News
7:00—Newspaper	Stars	News	News
7:15—Studio	Stars	News	News
7:30—Orchestra	Stars	News	News
7:45—Orchestra	Stars	News	News
8:00—Newspaper	Stars	News	News
8:15—Studio	Stars	News	News
8:30—Orchestra	Stars	News	News
8:45—Orchestra	Stars	News	News
9:00—Newspaper	Stars	News	News
9:15—Studio	Stars	News	News
9:30—Orchestra	Stars	News	News
9:45—Orchestra	Stars	News	News
10:00—Newspaper	Stars	News	News
10:15—Studio	Stars	News	News
10:30—Orchestra	Stars	News	News
10:45—Orchestra	Stars	News	News
11:00—Newspaper	Stars	News	News
11:15—Studio	Stars	News	News
11:30—Orchestra	Stars	News	News
11:45—Orchestra	Stars	News	News
12:00—Newspaper	Stars	News	News
12:15—Studio	Stars	News	News
12:30—Orchestra	Stars	News	News
12:45—Orchestra	Stars	News	News

# Journal Feature Page

12—Capital Journal, Salem, Oregon, Friday, Feb. 21, 1947

# EARTH TO THE MOON

By Jules Verne

Chapter 23

The influence of these attractions scarcely lasted an hour; the travelers felt themselves insensibly drawn toward the floor, and Barbicane fancied that the conical end of the projectile was varying a little from its normal direction toward the moon. By an inverse motion the base was approaching first; the lunar attraction was prevailing over the terrestrial; the fall toward the moon was beginning, almost imperceptibly as yet, but by degrees the attractive force would become stronger, the fall would be more decided, the projectile, drawn by its base, would turn its cone to the earth, and fall with ever increasing speed onto the surface of the Selenite continent; their destination would then be attained. Now nothing could prevent the success of their enterprise, and Nicholl and Michel Ardan shared Barbicane's joy.

Then they chatted of all the phenomena which had astonished them one after the other, particularly the naturalization of the laws of weight. Michel Ardan, always enthusiastic, drew conclusions which were purely fanciful.

"Ah, my worthy friends," he exclaimed, "what progress we should make if on earth we could throw off some of that weight, some of that chain which binds us to her, it would be the prisoner set at liberty; no more fatigue of either arms or legs. Or, if it is true that in order to fly on the earth's surface, to keep oneself suspended in the air merely by the play of the muscles, there requires a strength a hundred and fifty times greater than that which we possess, a simple act of volition, a caprice, would bear us into space, if attraction did not exist."

"Just so," said Nicholl, smiling. "If we could succeed in suppressing weight as they suppress pain by anaesthesia, that would change the fact of modern society!"

"Yes," cried Michel, full of his subject, "destroy the weight, and no more burdens!"

"Well said," replied Barbicane, "but if nothing had any weight, nothing would keep its place, not even your hat on your head, worthy Michel; nor your house, whose stones only adhere by weight; not a boat, whose stability on the water is caused only by weight; not even the ocean, whose waves would no longer be equalized by terrestrial attraction; and lastly, not even atmosphere, whose atoms, being no longer held in their places, would disperse in space!"

"That is tiresome," retorted Michel; "nothing like these matter-of-fact people for bringing one back to the bare reality."

"But console yourself, Michel," continued Barbicane, "for if no orb exists from whence all laws of weight are banished, you are at least going to visit one where it is much less than on the earth."

"The moon?"

"Yes, the moon, on whose surface objects weigh six times less than on the earth, a phenomenon easy to prove."

"And we shall feel it?" asked Michel.

"Evidently, as two hundred pounds will only weigh thirty pounds on the surface of the moon."

"And our muscular strength will not diminish?"

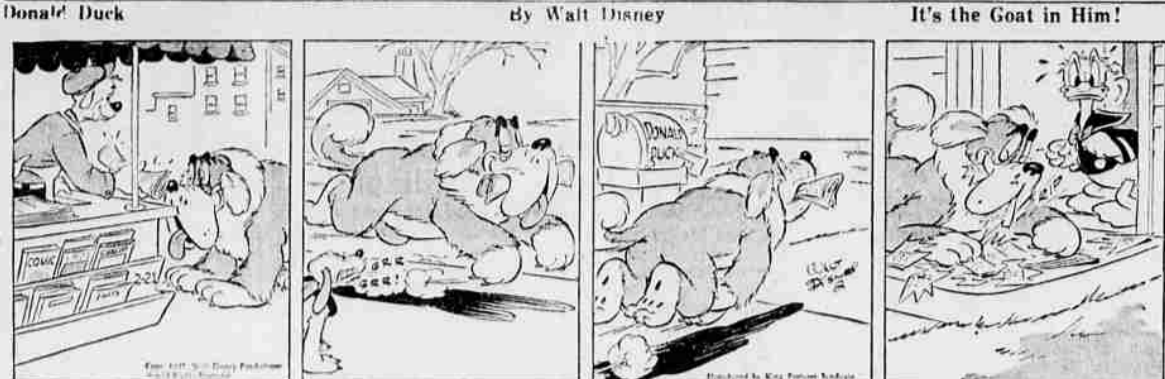
"Not at all; instead of jumping one yard high, you will rise eighteen feet high."

"But we shall be regular Hercules in the moon!" exclaimed Michel.

"Yes," replied Nicholl, "for if the height of the Selenites is in proportion to the density of their globe, they will be scarcely a foot high."

"Lilliputians!" ejaculated Michel. "I shall play the part of Gulliver. We are going to realize the fable of the giants. This is the advantage of leaving one's own planet and overrunning the solar world."

The projectile was perceptibly nearing the moon, and evidently succumbed to her influence to a certain degree; though its own velocity also drew it in an oblique direction. From these conflicting influences resulted a line which might become a



Church Session Held

Pedee—A large crowd attended the third quarterly conference of the Evangelical United Brethren church at the school house Tuesday evening. Reports of the Summit, Kings Valley and Pedee fields were given. Pictures were shown by the district superintendent, Paul Petcocker, of the trip east of the Ministers' Glee club of the Oregon and Washington conference.



# Latest Patterns



**R1749**  
**PATTERN NO. R1749**  
 Old-Fashioned Charm—All the romance and grace of olden days can be recreated for your home. A plain bread, enhanced by this lovely design, will make your home look completely redecorated!

Pattern envelope No. R1749 contains hot-iron transfers for 5 designs, color chart, stitch illustrations and directions. To obtain this pattern, send 15c in COINS, giving pattern number, your name, address and zone number to Peggy Roberts, Capital Journal, 828 Mission street, San Francisco 3, Calif.

### Crossword Puzzle

**ACROSS**

- Part of a vase
- Number
- Brazilian
- New star
- Chief Norse
- Tub
- Convey
- Fish
- Part of an old-fashioned
- Shifter
- Tier
- Basic
- Conjunction
- Piercing
- District in London
- Elevated
- Truck
- Feminine name
- Light repeat

**DOWN**

- Island of the Dutch East Indies
- Russian sea
- Cataracts
- Insect
- Stronhold
- Profit
- Kitchen stove
- Dude
- Fagan god
- Sinking bird
- Go in
- Surgical thread
- Conquered
- Criticized
- Rainy
- Electrical unit
- Corn jelly
- Hacienda
- Decorative
- Courtesy or
- East Ind.
- Blind
- Sleep
- So. American
- Daughter of Cadmus
- Maker of clothes
- Book of the Bible
- Fur-bearing animal
- Moment
- Mountain lake
- Graded
- heraldry
- Italian opera
- Troublesome
- heraldry
- Cereal grass
- Room about idly

Her Easter Outfit — A tiny lot's ensemble includes a cunning dress and coat with rounded yoke and daintily paneled skirt. You'll want to take her calling just to show it off.

No. 2727 is cut in sizes 1, 2, 3, and 4. Size 2, coat, requires 1 1/2 yds. 54-in.; dress, 1 1/2 yds. 35-in., 1/4 yd. 35-in. contrast for collar.

Send 20c for PATTERN which includes complete sewing guide. Print your name, address and style number plainly. Be sure to state size you wish. Include postal unit or zone number in your address.

Address: Pattern Department, Capital Journal, 552 Mission St., San Francisco, Calif.

