

Stocks Advance Up to Point

New York, April 21 (AP)—Security markets reacted favorably today to President Roosevelt's Mexican visit. Stocks advanced fractions to more than a point on increased volume with the utility average in new high ground since April 5, 1941, while Latin-American bonds featured the bond section.

Mexican bonds, long defaulted, were bid up and other Latin-American issues joined the rise.

The feature of the stock section was the improved demand for high-grade stocks. American Telephone, for example, moved up to a new high as Walter S. Gifford, president, told stockholders at the annual meeting that the company had more than it could handle with present facilities.

General Motors advanced more than a point to feature a strong market for the automobile shares. The issue was fairly active. Chrysler rose nearly a point in moderate turnover.

Railroad issues were among the best gainers near closing time. Norfolk & Western ran up 2 points to a new high at 181. Santa Fe and Southern Pacific turned active and strong near the end of the session.

Utilities were active. Two 10,000-share blocks for Commonwealth & Southern made that issue the active leader.

Communication issues followed American Telephone higher. International Telephone was active at a new high on a favorable report.

Dow Jones preliminary closing stock averages: Industrial, 134.00, up 0.91; rail 35.01, up 0.55; utility, 19.71, up 0.50; and 65 stocks 46.58, up 0.49.

Stock sales were 1,141,366 shares compared with 731,860 yesterday. Curb stock sales were 479,000 shares against 246,325 in the previous session.

Woman Admits She's Quite a Nagger

Seattle, April 21 (AP)—Mrs. Isabelle Hoag, 22, told authorities today she got so tired of hearing herself nagged by her husband she decided to "do him a favor and kill herself."

Taken to a hospital after stabbing herself twice in the chest Mrs. Hoag told attendants the way she nagged her husband, Riley, a mechanic, was "something terrible."

"Mostly I nagged him about money," she said. "Told she would recover, she promised not to try to take her life again, but she added:

"Somebody ought to kick me where it would do the most good."

Court Dismisses 78 Indictments

San Francisco, April 21 (AP)—Anti-trust law indictments against 78 persons, contractors and labor unions were dismissed by Federal Judge A. F. St. Sure Monday in a ruling that upheld a labor union's contention that painting with spray guns would cut down available work for its members.

The 78, in a case growing out of their refusal to paint government housing projects with spray guns, had been charged with combining to restrict the use of such equipment.

The defendants also contended that painting with spray guns was dangerous to health. Judge St. Sure, after commenting that there was no indication the defendants intended to fix prices or suppress competition, added: "Here it appears that the defendants are not in the paint spray business and are not in competition with the trade which it is alleged they restrained. The indictment charges the defendants agreed to restrict the use of equipment." He commented that the union demands appeared to be reasonable and that if employees accepted those demands they could not be considered unlawful.

Pullman Company To Separate Branches

Philadelphia, April 21 (AP)—An expediting court of three U. S. circuit court of appeals judges has found the Pullman company guilty of violating the Sherman anti-trust act and ordered it to separate its car manufacturing business from its service branch.

Judges Herbert F. Goodrich, John Biggs, Jr., and Albert Maris held last night that the policy of the group in requiring railroads taking its personal service to lease or purchase cars from Pullman was a violation of the anti-trust law.

In New York, President David A. Crawford said the case would be appealed to the United States supreme court.

Continuation of— U. S. National Banks

Jonathan Bourne in Alabama. Prescott asked the committee here to make an investment in war bonds for him, to be credited to the Marion county drive. While Gard did not release the amount of bonds which Prescott desired to have purchased for him, he said it was a sizeable block. Prescott formerly was Oregonian representative here for many years and later Senator Bourne's private secretary in Washington.

"Mr. Prescott's letter should be an inspiration to folks living in the residential districts of Salem," said Chairman Gard. "We cannot make an individual house-to-house canvass over Salem, although we know there are a great many people who want to purchase bonds and are waiting for someone to call at their homes. We just don't have the people available for this and urge that any such home folks go to the nearest sales agencies at once and buy their bonds. If a man can send way up here from Alabama to get in under our quota, we urge those people right at home to do as much."

Narrow Range Wheat Market

Chicago, April 21 (AP)—Grain futures eased on the board of trade today, with corn independently steady at ceiling levels.

Wheat finished the day off 1/4 to 1/2 cent a bushel; corn unchanged at OPA levels; rye off 1/4 to 1/2, and oats steadied at the close to up 1/4 to 1/2.

Prices held within a narrow range on the wheat market. An uncertain undertone prevailed as traders awaited developments in the agricultural appropriations bill still to be passed on the senate.

The trade was interested also in the scheduled meeting of the first of the week between grain representatives and the OPA for further discussion of futures trading in connection with a possible ceiling price on wheat.

General trade held to small volume as traders showed reluctance to follow a trend that would attract larger redemptions of lean wheat.

Minneapolis prices ruled steady due to mill-buying, but overall uncertainties were reflected in the Chicago pit. Flour trade continued dull.

July futures sold in moderate volume but attention centered on changing from May to July at 1/4 to 1/2 cent difference and from May to September at 1/2 cent premium for May. A fair amount of cash corn was bought to arrive.

The oats market continued dull.

Rye receded under liquidation by Chicago brokers. Traders changed from May to July at differences of 3 cents and 2 1/2 cents.

Markets Briefed

(By the United Press)

Stocks firm in moderate trading. Bonds irregular; U. S. government higher.

Curb stocks irregularly higher.

Silver unchanged in New York at 44 1/2 cents a fine ounce. Cotton off as much as 45 cents a bale.

Wheat 1/2 to 3/4 cent lower; corn unchanged at ceilings.

Weather favorable for cherry crops.

Eola — Weather conditions were ideal during the cherry blooming season this year which will insure a heavy crop barring future bad weather conditions.

Early vegetables and all kinds of fruit and grain are looking promising. Labor shortage and previous high water has handicapped the hop men seriously in their work. Serious damage was done to the river bottom yards by the recent high water and practically all material, wire, posts and the trellising is making hop raising a very expensive crop to raise. The wire alone on the Williams & Thacker yard amount to \$15,000 and labor is the highest in the history of hop-growing.

Shingle Mill Burns While Crew Fishes

Mill City—The shingle mill, owned by Wilbur and Grover Chesnut of Idanha, was completely destroyed by fire Saturday afternoon in the space of about half an hour. The entire building and equipment was a complete loss, although some insurance was carried. Most of the men were out fishing at the time.

Market Quotations

Portland Eastside Market

Asparagus offerings were limited on the farmers' outside wholesale market Wednesday. Sales fast and as high as \$3 per unit. Fair supply of cauliflower, \$3 crate, sold rapidly. Green onions and radishes went fast. No. 1 potatoes \$3.50 central.

Portland Produce Exchange

Butter—Cubs 93 score 47 1/2 lb. 92 score 47 1/2. 90 score 47c. 89 score 46 1/2 lb.

Eggs—Normal differential trading between wholesalers; Grade A large 36-38c, grade B large 37-38c. Grade A med. 36-37c, grade B med. 34-35c. Cheese—Cres. Triples 10c. 27 lbs. Jobbers may 1c lb. less.

Portland Wholesale Market

Eggs—Nominal prices to retailers: A large 37-39c, B 36-38c, A med. 35-37c, B med. 33-35c. A small 31c. Dozens.

Eggs—Normal price to producers: A large 39c; B large 38c; A medium 37c; B medium 35c dozen.

Live Poultry

Buying prices: No. 1 Leghorn broilers 1 1/2 to 2 lbs. 29c; colored fryers under 2 1/2 lbs. 31c; 2 1/2 to 4 lbs. 31c. Colorado chickens 4 lbs. 31c lb. Leghorn hens over 2 1/2 lbs. 25c, over 5 lbs. 22c. Leghorn hens over 3 1/2 lbs. 27c. Colored hens 4 to 5 lbs. 24c, over 5 lbs. 20c lb. No. 2 hens 24c. No. 2 grade 10c less. Rejects 14c. Roasters 16c lb.

Selling prices by receivers: Light hens 24c, med. 25c, colored 26-27c lb. Heavy roasters 30c, broilers 30c, turkey 18c lb. Pekin ducks, young 70-22c. Guinea hens, hand picked (—) each, Geese 21-22c lb.

Dressed turkeys—Selling prices: country dressed hens 34-35c; packers' stock hens, No. 1, 39 1/2 lb. cash and carry; large tons over 20 lbs., 34c cash and carry.

Rabbits—Average country killed, 48c; live 25c lb.

Fresh Fruit

Apples—Delicious, extra fancy box \$4.50, fancy \$3.75-4.4. Newtowns box \$4.50. H.R. \$4.50. Red \$3.50. C grade \$1.75 box. Rome's jumble \$2.50 combination \$2.50 jumble box. Winesaps ex. fcy \$4.75, fancy \$3.50, fancy med. \$3.10, jumbo \$3.15 box. C grade \$1.50.

Avacados—Fuerte, \$2.35-65; Buero to \$2.20 box.

Bananas — No. 1 hands 9.77c lb., bunches 9c. Packing extra. Seedless pink \$5-55; natural \$4-50; Arizona fcy \$3.20, choice \$2.75-50 a case. Conchella fcy, \$3.25-50 case. Florida \$4.87 case. Tex. pinks \$5. Florida \$2.40 case.

Limes—Mexican 20c doz. Cal 25c. Oranges—Cost navel \$4.94, standard place pack \$4.50, Texas \$5.35, Florida \$2.40 case.

Pineapple—Mexican 12c, 15c, 15.50 case.

Fresh Vegetables

Artichokes—No. 1 70-80c dozen.

Asparagus—Southern, case 30-32 lb. pyramidal No. 1 \$4.50. Yakima valley 12-14 lb. Southern \$5.25 pyramidal. No. 1 Bingen Canby \$5. No. 2 \$4. Beans—Southern green (—). Beets—Bulk 5c lb. Broccoli—Southern \$5-60-50 cte. Cauliflowers—No. 1 \$3 per cte. No. 2, \$2-32; Roseburg, No. 1 \$3.25.

Carrots—Ore coreless \$1.25 lug, southern \$5-55, 70-80 doz. crate. Imperial \$5.00, Turlock \$2.25 crate. Cabbage—No. 1 nominal; southern \$5.50-8c crate. Imperial \$4.50, Turlock \$4.25 crate.

Celery—Southern \$6.25-35 crate. Cucumbers—Lowa hothouse \$2.75 dozen. Local hothouse \$2.25-35 crate. Garlic—No. 1 nominal 4-6c lb. Lettuce—Imperial 4c, per crate \$5.50. Imperial 5c, local \$2.25 crate. Arizona 5c, local \$3.00. Dry \$3.40 crate. Mushrooms—Hothouse 70c lb. Onions—Green 90c doz. bunches. Ore. dry \$1.94 50-lb. bag; Idaho \$1.94 50-lb. bag; 2 1/2-3 1/2 bushel. Peas—Southern Pole 15c lb. Potatoes—New Florida \$3.50 bushel hamper. No. 1 Deschutes \$3.64 central; and prices No. 2 \$1.45-50 per 50 lbs. seed stock \$3-8c lb. central; local \$3.50 central; old table Radishes—Doz. bunches 90c. Local 90c-81 doz. bunches. Rhubarb—Field grown 65-75c 15-lb. box.

Parsnips—Bulk \$1.75-85 lug. Squash—Danish (—); Zucchini \$3.50. Hubbard 7c. Marblehead 7c. Banana 7c lb.

Spinach—Texas \$1.25-50 bushel; No. 1 \$1.50-80 orange box. California \$4.75 per 45-lb. box.

Sweet Potatoes—Virginia yams lb. bag, Texas \$3.15 50-lb. sack. Calashes—No. 2 Deschutes \$3.25 Southern yams, 6c crate, \$5.15 crate.

Tomatoes—Hothouse 16-30c lb.; Mexican \$5.40 lug as is; repacked 19c lb. California \$3.20-4.85 50-lb. Mats.

Country meats—Selling price to retailers: country killed hogs, best butchers, 130-140 lbs. 20c, vealers, fancy AA 28c, A 26 1/2c, B 24 1/2c. C 22 1/2c. 10 Good heavy 16-20c; rough heavy 16-18c. Canner-cutter cows, new killing, 175c lb. Lams 27c, ewes good 15c lb., poor 10c.

Wool

Wool — 1942 contracts, Oregon ranch nominal, 37c lb.; crossbred 40-42c lb.; lams (—) 37c lb.

Hops—Wood stock, 1943 crop, \$1.16 lb.; seedless 1.50-60 lb.; contracts seedless 70c lb.; seed 65c lb. 22c; large 12c; medium 19c; baby 16c.

Walnuts

Prices set by growers to wholesaler.

First grade Franquettes—Jumbo Second grade Franquettes—Jumbo 20c; large 19c; medium 18c; baby 15 1/2c.

Soft shells—Large 18c; mediums 17c; baby 15c.

Mayettes—Large 19c.

Portland Grain

Portland, Apr. 21 (AP)—Cash grain. Barley No. 2 45-lb. 31.50. No. 1 1.50. 2 90c. Wheat (bid): soft white 1.25, hard 1.27. White cut 1.27. Western red 1.27. Hard red winter: ordinary 1.26, 10 pct. 1.20, 11 pct. 1.32, 12 pct. 1.34; hard white baer unqued. 1.34. Wheat 17, flour 8, milled 4, corn 2.

Portland Livestock

Portland, April 21 (AP)—(USDA) Cattle 125, salable 125; calves 35 and 25. Market active and fully steady on kinds available. Steers scarce, few head common 12-13, med.-good fed steers salable around 15-15.50, cutter-med. heifers 9.50-13. Canner-cutter cows 7-9.60, fat dairy type 9.50-10.50, heavy Holsteins to 11.25, med. heifers to 12.25. Bulls 12-15.00, good bulls quotable to 13.75 or above. Good-choice vealers strong at 13.50-15.50 culls down to 8.00. Hogs 400, salable 300. Market active, 10-15c higher. Good-choice 180-230 lbs. 14.25-50; 140-170 lbs. 14-14.25, good 400-570 lb. sows 13.25-14.50. Good-choice feeder pigs 16-17. Sheep 100 salable, market active, fully steady. Med. to good woolled lambs 14-15, good-choice 51-63 lb. springers 16-16.50, med. grades down to 15.00. Good ewes 8-8.50, med. 6.

Chicago Grain

Chicago, Apr. 21 (AP)—Cash grain.

Wheat—No. 1 yellow hard 1.47 1/2. Corn—No. 2 mixed 1.23 1/2. No. 2 yellow 1.07. No. 3 1.05 1/2-06 1/2. No. 4 1.05. No. 5 1.02. No. 1 white 1.23 1/2. No. 2 1.22. No. 3 1.20. No. 4 1.18. Oats—No. 1 mixed 67 1/2-68 1/2. No. 1 white 68 1/2. No. 4 white heavy 66 1/2. No. 1 red special heavy 67 1/2. Barley—Maltling 92-1.07n, hard 90-92n, feed 86-90n. No. 3 malt. 1.07. Wheat open high low close: May 1.44 1/4, 1.44 1/4, 1.44 1/4. July 1.43 1/4, 1.43 1/4, 1.43 1/4. Sept. 1.44 1/4, 1.44 1/4, 1.44 1/4. Dec. 1.45 1/4, 1.45 1/4, 1.45 1/4.

Chicago Livestock

Chicago, April 21 (AP)—(USDA) Hogs 19.00, salable 11.00; generally steady with Tuesday. Top 15.05; good-choice 180-360 lbs. 14.80-15.05, bulk at 15. Most good-choice 150-180 lbs. 14.25-50. Good 360-550 lb. sows 14.00-90.

Salable cattle 9500, calves 900. Fed steers and yearlings steady to 25c lower; choice steady, med.-good grades showed most downturn, selling at 16.50 down to 14 and below. Top paid for two loads med.-choice prime steers, several loads 17-17.50, bulk 14.75-17. Heifers steady to weak; average choice offerings topped at 16.50, bulk 14-16.00. Cows and bulls very scarce, most classes strong to 25c higher, vealers steady at 16.00 down, heavy saulers bulls 14.25, cutter cows 9.75 down.

Sheep 8000 salable, Tuesday; fat lambs closed mostly steady after 10-15c lower opening. Good-choice fed western woolled lambs 15.25-85, odd loads choice 16, top 16.10. Good-choice 78-108 lb. clipped lambs with No. 1 and 2 skins 14.75-15. Sheep steady, just good-choice native ewes 9-25, top 9.50. Today: Fat lambs mostly steady with Tuesday. Ewes and sales good-choice fed western woolled lambs 15.00-85, med.-good choice 14-15.25, best held above 16. Few double good-choice fed western clipped lambs mostly with No. 2 skins 15.00 and 65 head out; undertone about steady on sheep. Demand for few good-choice native ewes around 9.25.

Boston Wool

Boston, April 21 (AP)—Purchases of more than 100,000 lbs. of wool in Texas for future delivery reported today at 45-47 1/2c. Shorn 12-mos. 48c. Some contracting on wools took place in Belle Fourche for 45-48c. Purchases were also in New Mexico at 45-46c for staple fine wools.

Salem Markets

Compiled from reports of Salem dealers, for the guidance of Capital Journal readers. (Revised daily)

Buying Prices

Wheat—Red and white \$1.10 bu. Gray Oats—No. 2 39-40c. 40 ton. E. H. \$4.50. Turlock \$3.50 ton.

Retail Prices

Egg Mash—\$3.31 cwt. Pullet Grower Mash—43.35 cwt. Chick Starter—\$3.17 cwt. Chick Starter—\$3.17 cwt. Chicken Scratch—\$2.85 cwt. Whole Corn—\$2.85; cracked \$2.95.

Meat Market Reports

1.50c. No. 2 20c. Fryers over 3 lbs. 32c. White Leghorn hens 17c. Fry 21c lb. Eggs—Buying prices, large grade A white and brown 35c doz, med. 32c. Standards, B large 32c doz. Pullets 20c, cracked 16c. Hens 21c.

Eggs—Wholesale prices: Ex. Large A white and brown 39c doz, med. 36c. Standards B large 36c dozen. Chick Starter—\$3.17 cwt. Butterfat: 50 1/2c quarters 52c lb. Butterfat: Premium 54c, No. 1 52c, No. 2 52c lb.

Weather Retards Southern Crops

Washington, April 21 (AP)—The agriculture department reported today unfavorable weather in many sections of the south has retarded truck crops and that fresh vegetables will reach the market somewhat later than usual.

Abnormally low temperatures in the south Atlantic states and in the south central states during the last 10 days caused considerable damage to some crops, particularly strawberries, the department said.

Elsewhere, particularly in Texas, central and northern California, truck crops made fairly good progress, the report said.

Mill City Benefit Helps Farm Home

Mill City—The annual benefit card party for the Children's Farm Home at Corvallis, which was given recently at the J. F. Potter home, netted over \$19. Only seven tables of cards were in play, but many members of the local Women's club, who acted as hostesses for the event, as well as visitors, dropped in for a time.

High score in contract was held by Mrs. C. C. Porter, second prize going to Mrs. Lee Brown of Stayton. Prizes for \$500" went to Mrs. Ring and Mrs. Rambo, both of Lyons. Euchre awards were won by Mrs. C. D. Johnson, Mrs. Mabel Knuteson, and Mrs. Boves, all of Gates or Niagara.

At the close of play, refreshments were served buffet-style. Mrs. C. M. Cline and Mrs. Edward J. Rupp, club president, presided at the table. General chairman for the affair was Mrs. Albert Millsap, assisted by Mrs. R. F. Saucier, Mrs. W. L. Quinn, and Mrs. Lafa Potter.

Morocco, which with Algeria and Tunisia have supplied all cork used in the United States, now has large stocks of it awaiting shipment as soon as world conditions permit.

Oregon Payroll Doubled in Year

Oregon's \$110,131,209 industrial payroll in the first quarter of 1943 was almost double the 1942 first quarter payroll of \$65,323,531, the state industrial accident commission said today.

Multnomah county's industrial payroll during the quarter totaled \$84,727,178, compared with \$34,508,759 in the first three months of 1942, and \$14,963,805 in the corresponding period of 1940, before war industry pay checks amounted to much.

Before the war, Multnomah county's payroll was less than a third of the state's total. Now it is about three-fourths.

The state's payroll in March was \$43,509,059, a new record and about \$3,000,000 more than during the preceding month. It was double the March, 1942 total.

Multnomah county's March industrial payroll was \$32,481,340, compared with \$12,466,762 in March, 1942, and \$4,919,874 in March, 1940.

To Streamline More Products

Washington, April 21 (AP)—Drastic simplification of consumer goods—elimination of all frills but stopping short of complete uniformity—probably will be undertaken soon, reliable sources said today.

The far-reaching program is on the desk of War Production Chairman Donald M. Nelson. Action on it is expected after Arthur Whitelstein, new head of WPB's office of civilian supply, takes over his duties later this week.

Simplification of industrial products already has been undertaken by WPB on a small scale. Such products include baby carriages, farm machinery, feminine apparel, kitchen and household articles, hand tools, incandescent, fluorescent and other electric discharge lamps, paper and plumbing and heating equipment.

One of the foremost objectives of the proposed new program, officials said, is the conservation of manpower.

Present Cantata At Calvary Baptist

The choir of the Calvary Baptist church, assisted by the Willamette university orchestra will present the cantata "Seven Last Words" when they appear in concert this evening at the church. A thirty minute organ concert, beginning at 7:15 o'clock will precede the cantata. Miss Gladys Edgar will be at the organ.

Soloists for the cantata, which was written by Theodore Dubois in 1867, include Doris Lee Anderson, Soprano, Michael Carollan, tenor and Corydon Blodgett, bass baritone.

Wendell Johnson is director of the choir. He is concert master of the Willamette university Symphony orchestra and makes his home in Portland. Mr. Johnson also teaches the voice chorus at the Oregon State school for the blind.

Over 700 Members Of CC, Want 800

A steady drive over a period of several months has netted the Salem Chamber of Commerce several hundred new members and brings the total up to over 700. The Chamber started with a goal of 800, so the campaign is now on the last 100. No limit, however, has been placed on the number to be enrolled.

The Chamber has made no use of the "fireworks" method of soliciting members, but has pushed steadily ahead by the contact system, and refusals have been few when the advantages of Chamber membership have been shown the prospects.

All members of the staff solicit memberships, and Mrs. Ilda Bingenheimer is employed to give her time exclusively to that activity.

Members enrolled during each week are printed in the weekly bulletin.

Visitors in Amity

Amity—Mr. and Mrs. William Wilson of Dundee and daughters, Miss Alida Wilson, teacher in the Newberg schools, and Miss Mildred Wilson of Portland, were Amity callers at the home of Mrs. Margaret Morrison.

Kentucky Coal Miners Still Out

Harian, Ky., April 21 (AP)—Strikes involving 2,400 workers at five different mines continued to stall production of coal today in southeastern Kentucky.

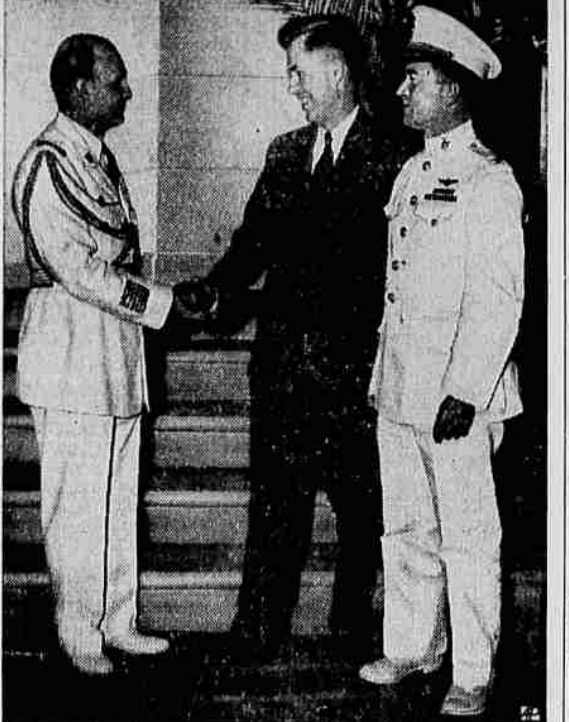
The latest strike, involving 1,000 miners, was reported yesterday at the Black Mountain company mine at Kenvir.

Meanwhile, Federal Labor Conciliator John E. Addicks of Cincinnati continued to attempt settlement of disputes in mines at High Splint and Clover Splint and at two Cornett-Lewis company mines at Louisville.

The miners struck a week ago to protest what they described as "filibustering tactics" employed by the companies in arbitrating disputes.

Worry of FALSE TEETH Slipping or Irritating?

Don't be embarrassed by loose false teeth slipping, dropping or wobbling when you eat, talk or laugh. Just apply a little PARTHEEN to your plates. This pleasant powder gives a remarkable sense of added comfort and security by holding plates more firmly. No stinging, no sticky taste, and feeling it's alkaline (non-acid). Get FASTEETH at any drug store.



Wallace Meets Peruvian Aide (AP)—Vice President Wallace shakes hands with Col. Alberto Solari, aide to Peru's president, during his stopover at Lima. At right is Col. Vernon E. Megee, USMC, acting chief, U. S. Naval Aviation Mission to Peru.

Roosevelt and Pine Workers Get Pay Raise

Washington, April 21 (AP)—Stabilization Director James F. Byrnes has ruled against a price increase for Pacific northwest pine companies but has approved a war labor board decision granting wage increases of approximately 7 1/2 cents an hour for 26,800 workers employed by pine companies in the area, it was learned today. It was understood that Byrnes left open, however, the possibility that some other form of relief might be found for the companies.

His approval — Required in any WLB decision which may involve an increase in prices — was needed in this case because the companies sought a price increase to offset the wage boost, which was recommended by the WLB's west coast lumber commission.

The WLB's verdict was revealed last Saturday by Public Member Wayne L. Morse, who wrote a dissenting opinion in which he joined the board's labor members in protesting that the wage increase should have been higher.

Both he and Mr. Roosevelt took note of the way Mexico has been turning out materials on which American war plants feed and sending her men across the border to work on farms.

They exchanged mutual expressions of pride and esteem, and Mr. Roosevelt commented on "the harmony and mutual confidence which has prevailed between our armies and navies."

"Brotherhood in arms has been established," he said. Mexicans and Americans have common aspirations in the shaping of a common victory and can work together for a common objective.

"Let us never lose our hold upon that truth," he said. "It contains within it the secret of future happiness and prosperity for all of us on both sides of our unfortified border."

"Let us make sure that when our victory is won, when the forces of evil surrender—and that surrender shall be unconditional—then we, with the same spirit and with the same united courage, will face the task of the building of a better world."

Mr. Roosevelt lauded the system of international cooperation which has been worked out for the western hemisphere and said Mexico had played an outstanding role in forging it.

Door Company Gets Order to Reinstate

Portland, Ore., April 21 (AP)—The Northwest Door company of Tacoma was ordered by the West Coast Lumber commission of the war labor board to reinstate, with full pay for time off, an employee whose discharge precipitated a recent work stoppage at the plant, it was announced today.

The commission also ruled that yellow warning slips, issued to three members of the company's cutter crew, should be submitted to the union shop committee. If the company's complaints against employees were not corrected, the lumber commission ruled, the company would have the right to discharge the workers in question, after giving previous notice to the shop committee.

Operetta Presented Maple School PTA

Albany—Election of officers and the presentation of the operetta, "Little Red Riding Hood," given by the students, featured the meeting of the Maple school Parent-Teacher association Monday. Officers elected are: Mrs. O. R. Wiseman, president; Mrs. Floyd Hopeman, vice president; Mrs. K. E. Ellingboe, secretary; Mrs. Stanley Lang, treasurer; Mrs. Walter Kropp, historian.

To Fruit Growers and Others about WARTIME FOODS!

We need additional growers who want to make fruit growing their business. Help us to fill our quotas for the armed forces with ample left over for civilian use. Plan now to volunteer your time for a week or two or three during production peaks in June-July, also later in August-September at established canneries' wages. Also full time workers needed. Many helped materially last year with four-hour shifts regularly from three to six days per week. Labor registration opens May 10. Fruit growers' registration opened May 1.

Cash Buyers of— Gooseberries, Strawberries, Red & Black Raspberries, Loganberries, Youngberries, Boysenberries, Cranberries, Cherries, sweet and sour, Elberta Peaches, Bartlett and Winter Pears, Fresh Prunes, Apples for applesauce.

Help us keep our canning, freezing, barreling, preserving, and drying equipment up to as near capacity as possible with your contribution of raw products and of your labor. We will do our best to do the rest in producing thousands of tons of food for a hungry world. Please cooperate.

MAX & MARK GEHLHAR
Oregon Fruit Products Co.
WEST SALEM

Births, Deaths

Births

Falls City—A son, born Sul by to Mr. and Mrs. Donald Ferguson of Wren.

Falls City — A daughter to Mr. and Mrs. Victor Hotchkim at the Dallas hospital Saturday, April 17.

Silverton — To Mr. and Mrs. Frank Aicher of Woodburn, a boy, April 20, at Silverton hospital.

Deaths

Eckstein—William Jacob Eckstein, late resident of Delake, Ore., at the home of his son, 1878 Eng. Wilson street, Wednesday, April 21, at the age of 65 years, father of Mrs. Ploy Riehoff of Seter, Iowa, William Harold Eckstein, Harry J. Eckstein, Max T. Eckstein and Burtell B. Eckstein, all of Salem, and Miles L. Eckstein of the U.S. Army. Also survived by nine grandchildren. Services will be held Friday, April 23, at 10:30 a.m., from the Clough-Barrick chapel, after which shipment will be made to Webster City, Iowa, for interment.

Baker—Joseph Baker, late resident of Klamath Falls, at a local hospital April 20, at the age of 70 years. Survived by his daughter, Mrs. George Santerno of Beatty, Ore., and one son, Quincy B. Baker. Announcement of services later by Walker and Howell Funeral home.

Obituary

Mrs. Mathison

Fairview—Mrs. E. D. Viele received word Sunday of the death of her mother, Mrs. Mathison, at her home in Waco, Saturday evening. She had been in failing health for about one year, but her daughter, of Independence, had returned to her home Friday evening, and a visit with her mother and was shocked at her sudden death. Mrs. Mathison was 81 years of age. Surviving are two sons, John and Rufus, Mrs. C. F. Holt, Monday, Mrs. Nolan Rickles of Independence and Mrs. E. D. Viele of Fairview.

Leo Paquette

Aurora—Funeral services for Leo Paquette, 67, who died of a heart attack at the home of his sister, Mrs. C. F. Holt, Monday, were held Saturday in the St. Yllams Catholic church at Moll. Everhart Funeral home in charge. Rev. Cornelius Sheat officiated. Interment was in Scott's cemetery. Born in Portland in 1876, the son of Pachel and Monica Paquette. He had lived in Oregon most of his life, residing near Donald for the past three years. Surviving are two sisters, Mrs. C. F. Holt of Moll and Mrs. Garfield Easton of Boyd; and two brothers, Albert of Cottage Grove and John of Seattle.

Peter N. Prueid

Silverton—Funeral services are arranged for Peter N. Prueid, son mortuary for Peter N. Prueid for Thursday at 1:30 p.m. Rev. M. J. K. Fuhr will officiate. Interment will be in Silverton cemetery.

Alvin Roy Brown

Dallas—Funeral services for Alvin Roy Brown, 70, folk county farmer and stock raiser, who died at his home near Dallas Saturday, were held Tuesday at the Henkle & Bolman chapel with Rev. William Rhee officiating. Interment was at the I.O.O.F. cemetery. Mr. Brown was born on his father's donation land claim four miles north of Dallas July 8, 1872. He had three more months of life except three years spent in Jackson county. He was married to Lida E. Owens, August 22, 1900, while residing in Jackson county. He is survived by his widow, four sons, Raymond B. and Harold of Dallas, George B. in the U. S. navy overseas, and James, in the U. S. navy, and one brother, George Fay, of Corvallis.

No Change in Home Canning Program

Washington, April 21 (AP)—The office of price administration today advised housewives to go ahead with canning programs on the same basis as last year since no changes are contemplated in sugar provision for home canning.

To clear up confusion, officials said, all who plan home canning are advised to make their preparations. If any changes in the program are forthcoming, they added, they will be refinements only and not of a basic nature.

HEMORRHOIDS (Piles) Hemia (Rupture), Fissure or Fistula

Such disorders impair your health—efficiency—earning power. For 30 years we have successfully treated thousands of people for these ailments. No hospital operation. No confinement. No loss of time from work. Call for literature or send for FREE descriptive booklet.

Open evenings, Mon., Wed., Fri., 7 to 8:30

Dr. C. J. DEAN CLINIC
Physician and Surgeon
N. E. Cor. Grand and Ave. Telephone KAM 3916, Portland, Oregon

To Fruit Growers and Others about WARTIME FOODS!

We need additional growers who want to make fruit growing their business. Help us to fill our quotas for the armed forces with ample left over for civilian use. Plan now to volunteer your time for a week or two or three during production peaks in June-July, also later in August-September at established canneries' wages. Also full time workers needed. Many helped materially last year with four-hour shifts regularly from three to six days per week. Labor registration opens May 10. Fruit growers' registration opened May 1.

Cash Buyers of— Gooseberries, Strawberries, Red & Black Raspberries, Loganberries, Youngberries, Boysenberries, Cranberries, Cherries, sweet and sour, Elberta Peaches, Bartlett and Winter Pears, Fresh Prunes, Apples for applesauce.

Help us keep our canning, freezing, barreling, preserving, and drying equipment up to as near capacity as possible with your contribution of raw products and of your labor. We will do our best to do the rest in producing thousands of tons of food for a hungry world. Please cooperate.

MAX & MARK GEHLHAR
Oregon Fruit Products Co.
WEST SALEM

HEMORRHOIDS (Piles) Hemia (Rupture), Fissure or Fistula