

### Tire Dealers Allowed to Build Up Stock

Tire dealers can now start building up their stocks of used, repaired and recapped tires accumulated under the idle tire purchase plan, the state OPA announced under the new program effective today. Holders of "A" and "B" gasoline rationing cards who can show essential need for replacement tires will be the principal applicants for these tires, the OPA explained.

Dealers may now apply on OPA form R-54 to their state office, not the local ration boards, for allotments, OPA stated. Recappers or repairers should apply on Form R-22.

Tire dealers will be allotted one each of new Grade I and II tires for each \$2,000 of 1941 sales, with a minimum of six I or II tires regardless of 1941 sales, OPA stated. One tube may be allotted for each Grade I or II tire that a dealer is authorized to buy. Dealers' inventories are deducted from their allotments of tires, OPA said.

A dealer can get one recappable, repairable or usable tire, at his option, for each \$1,000 of 1941 sales, with a minimum of 12 used tires regardless of 1941 sales, said the OPA.

Recappers can obtain 50 passenger-type carcasses for each mold, and repairers can acquire 25 repairable tires for each unit of tire vulcanizing equipment, OPA explained. Tires must be recapped and repaired within 30 days after acquisition.

A West Indian negro student has been elected president of the Oxford Union.

### Budgetary Account of Red Cross Fund Made

According to a release made recently by the national Red Cross, a budgetary accounting has been made regarding the expenditure of the last war fund drive, made by the organization in 1941.

At this time \$65,000,000 was given the organization by the public, of which Marion county contributed \$2,300.

Of the entire amount contributed, according to the report, one half was set aside for the needs of the armed forces. The Red Cross is the organization designated to extend social welfare work on military posts and as such is to be found in the camps and posts the world over, both in the United States and abroad, wherever the fighting forces go.

#### War Service Extended

This welfare service includes hotels and clubs for servicemen in foreign countries, medical social workers for military hospitals both here and abroad, blood plasma for the wounded, enrollment of nurses for the military, assistance with organization of recreation for foreign servicemen, and many other services rendered at the request of the military to meet individual camp needs.

Disaster preparedness against war onslaught was cared for by 25 per cent of the entire amount. Each person who contributed 25c to the war fund in 1941 made possible protection this past year against war disaster at home. Present circumstances made it necessary to increase preparedness measures, Red Cross disaster people point out.

Ten per cent of the \$65,000,000 has been allocated for civilian emergencies, such as floods, fire, tornadoes and reconstruction after the bombs fell in Honolulu. Those who gave to this fund in 1941 have aided

in giving food, shelter, clothing, medical care and rehabilitation for many hundred unfortunates in the past year.

#### Surplus to Be Used

Officials of Marion county chapter point out that the local chapter received 15 per cent raised locally, as did all the 3,800 chapters of the national Red Cross, for use in meeting local war emergency needs. The money spent in Marion county chapter was for the most part used in purchasing yarn to make the knitted garments for servicemen which the military is so urgently requesting.

Local chapter officials also point out that of the entire \$65,000,000 raised as an emergency war fund by the national Red Cross, there is, according to the national report, a substantial amount left which will be used to supplement the increased national budget required for 1943-1944.

#### Phone Directors Kept

Central Howell—The Silverton Highway Consolidated Telephone company held their annual meeting at the Central Howell school house Monday night. Routine business was transacted with all the officers retained. They are: President, Frank E. Way; vice-president, George Plane; secretary-treasurer, Frank E. Way; board of directors, Clarence Johnson, Ed Dunigan and Lee Dow, or one representative from each line in this company.

### Lesser Heroes Of Navy Honored

Bremerton, Jan. 21. (AP)—Two of the lesser known heroes in American naval history, Rear Admiral Eugene H. C. Leutze and Lieut. William Halford, were honored Wednesday with the launching of destroyers bearing their names at the Puget Sound navy yard.

Admiral Leutze, who was appointed to the naval academy by President Lincoln, served in both the civil and Spanish American wars and was cited for bravery when his vessel, the U. S. S. Severn, was rammed by the Ironclad terror in Civil war days. His granddaughter, Miss Caroline Rowcliff, of Mills college, Oakland, Calif., was at the ceremony today as sponsor.

Miss Eunice F. Halford, 229 Greenbank avenue, Piedmont, Calif., daughter of the late Lieut. Halford, was sponsor for the destroyer given the family's name. As a coxswain on the U. S. Saginaw, wrecked on a South Pacific reef in 1871, he was the sole survivor of five volunteers who sought help from Honolulu, 1500 miles away. He reached the Hawaiian islands in 31 days.

### Lieut. Phillips Goes To Camp Roberts

Word has been received here that Lieut. W. L. Phillips, Jr., son of Mr. and Mrs. W. L. Phillips, 195 West LeFelle street, has just completed the officers' maintenance course at the infantry school at Fort Benning, Ga., and has been sent to Camp Roberts, Calif. He is now on his way to that camp. The officers' motor mainte-

nance course at Fort Benning is a 12-week program designed to produce qualified transport and maintenance officers for infantry regiments. The students go to the infantry school on detached service from their permanent units, and they return to those units upon completion of the course.

The course is divided into four-week groups known respectively as the engine, chassis, and operations groups. The engine group places greatest emphasis on carburetors and automotive electricity. The chassis group is concerned with frames, clutches, transmissions, winches, springs, shackles, shock absorbers, axles and brakes. The operations group deals with all phases of field maintenance with greatest stress on driver maintenance, breaking in new vehicles, and proper lubrication.

Dayton—There was a very small attendance of members present at the regular meeting Tuesday evening of the Dayton post, American Legion and auxiliary. A short business session was followed by a social hour, when refreshments were served.

### John Bentz Gets Liar's Prize

Regardless of the inclement weather approximately 75 members attended the regular monthly meeting of the Knights of Columbus held at Sublimity Tuesday evening. Raymond Kerber of Stayton was appointed lecturer of the council, to fill the unexpired term of Michael Mauer, victim of the recent flood.

Plans were laid for the third class initiation of new members to be the event of early spring. Indications were hinted at this meeting that Sublimity council might again have a civic duty for the fiscal year, as it did in 1939. In cooperation with the Catholic Daughters the Knights plan on entertaining the group of the boys from Camp Adair for a Sunday dinner on January 31. On Christmas day 42 of the boys were taken into local homes, and it is their plan to duplicate this program. Tickets were distributed at

this meeting for the annual C.D.A.-K. of C. Valentine dance in Stayton, for the benefit of the boys in the service. Honor was accorded Ralph Lulay, new member of the local council, due to his election as leader of the Young Peoples club of Sublimity.

Following the meeting, a program was conducted by the new lecturer, Raymond Kerber, in the annual Liar's contest, with John Bentz of Sublimity being awarded the prize as the best liar of the council. The feed committee, composed of Vinc Martz, John Gries, Carl Zimmermann, Paul Lambrecht served lunch.

### Presbyterian Church School Has Election

Woodburn — Officers elected by the Presbyterian Sunday school Sunday morning are: John Templeton, superintendent; Mrs. Vernon Frenz, assistant superintendent; Mrs. Henry Layman, secretary-treasurer, re-elected for the 41st successive year; Beverly Hughes and Virginia Olson, pianists; Emir Templeton, librarian; Arlene Smolnisky, primary superintendent; Ellen Doud, primary pianist; Mrs. Olive Smith, chairman of the board of elders, presided.

### Journal Want Ads Pay

"ARE YOU BACKING US UP, BY STAYING WELL?"



This army is taking lots of doctors and nurses from civilian life into active service. It's up to you to back up the soldiers by staying well and leaving available civilian doctors time enough to handle more patients.

Scientifically Prepared Prescriptions

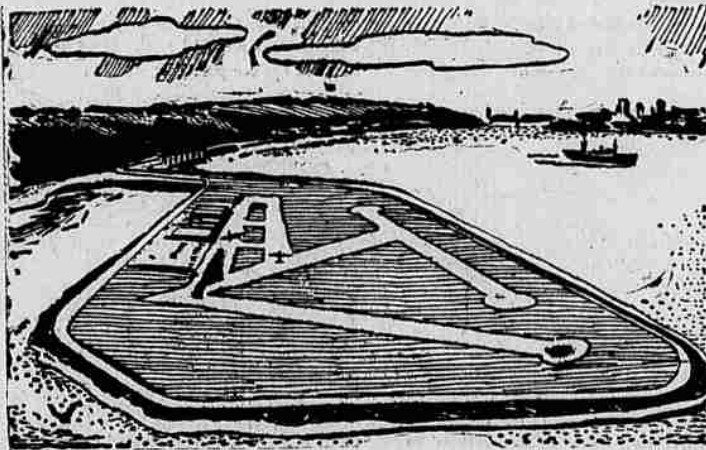
See Your Doctor First Then Bring his Rx Here

## SCHAEFER'S DRUG STORE

1200 — Prescriptions Accurately Filled — 1943 Original Yellow Front Drug and Candy Store in Salem Sole Agents for Fenster Remedies in Marion County 125 N. Commercial St. Phone 5197 or 9728

# Swan Island Comes Into Its Own!

## WITH PGE DELIVERING THE POWER



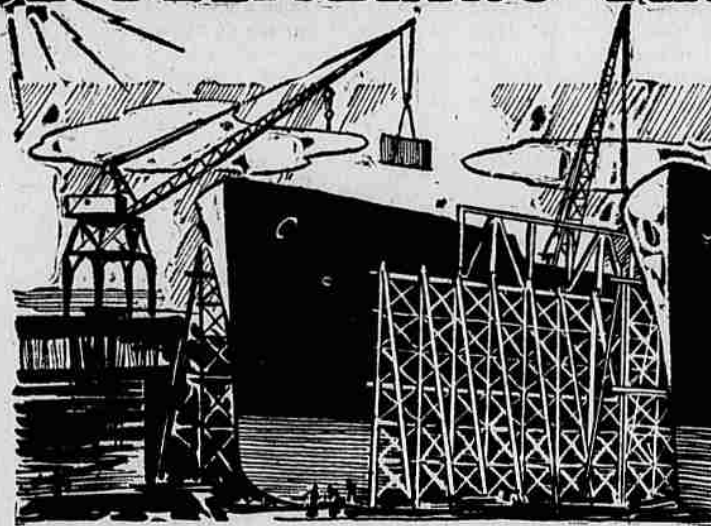
**CONCEIVED** by Port Commission as an industrial center; but first made an airport.

From cat-tails to payrolls! That's the dramatic record of Portland's Swan Island. And it's a story linked with PGE's alert, foresighted construction of facilities to deliver the power.

Twenty years ago a progressive-minded Port of Portland Commission laid plans for developing Swan Island — then a brush-covered, swampy eyesore — into an industrial center. Its location near the center of Portland, with access to deep-water and rail transportation, made it a "natural" for a factory center.

But then the era of developing airports arrived, and the Port Commission decided that Swan Island could best serve immediately as a hub of air transport. At that time, the Willamette River's main channel swung east of the island. The Port deepened the west channel, making it the main artery, and used the river-bottom material to build up the island.

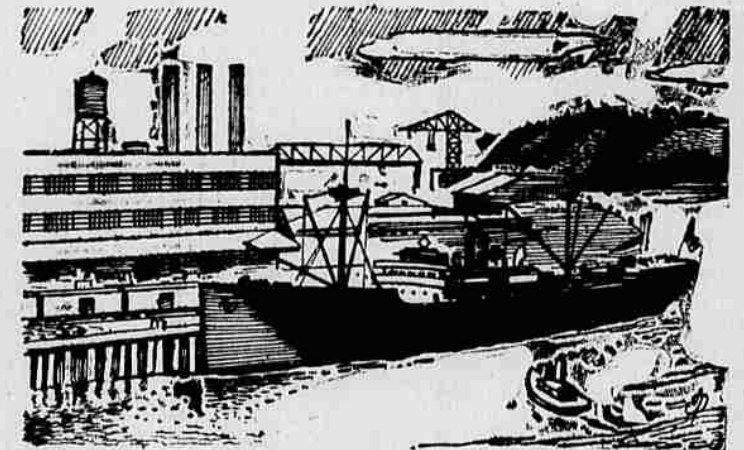
PGE built a line that carried the first electric service to Swan Island. In succeeding years, PGE built larger and larger lines, and installed the necessary transformers and other equipment.



**PRESENT:** Builder of largest commercial ships on Pacific Coast.

When the Kaiser interests began planning the construction of a great shipyard on Swan Island, PGE jumped into action and met every requirement ahead of schedule. PGE delivered all of the power for building the Swan Island shipyard... and is now delivering all of the power for building giant tankers which have almost double the capacity of the famous Liberty Ships. These are the largest commercial ships built on the Pacific Coast.

Swan Island, and scores of other war industries in this area, are now reaping the benefits of PGE's half-century of pioneering. For more than 50 years, PGE has demonstrated its faith in the future of this region... by developing five waterpower plants, a great steam plant, and by building a network of lines throughout a 2500-square-mile territory. In the past four years, the foresighted PGE management has spent \$4 million dollars to enlarge PGE's capacity for serving scores of vital war industries and other industries. Part of this huge expansion enables PGE to deliver the many thousands of horsepower required 24 hours a day by the Swan Island shipyard of the Kaiser Company, Inc.



**FUTURE:** An industrial center served by PGE's lines.

After victory is won, perhaps Swan Island will continue to make ships. Or, perhaps, airplanes. Or any number of other products.

With commendable foresight, the Kaiser interests have built this shipyard so that it is quickly and easily convertible to manufacturing processes.

Whatever the plans after victory, the facilities that PGE built up will help give Swan Island industry a head start in serving post-war markets.

PGE's record of providing service ahead of schedule on Swan Island is just another example of how free enterprise is measuring up in the war program.

Today PGE is delivering a quarter-million horsepower to war industries and other users throughout a 2500-square-mile area stretching from St. Helens to Salem. We are delivering 37% more power than three years ago. And we are providing this power at rates that are among the very lowest in all America — actually lower than the rates of many taxpayer-subsidized utilities. The average family pays less for electricity in Portland than in any other city of Portland's size on the Pacific Coast. And, compared with 1934 the average PGE residential customer gets 52% more electricity per dollar!

DELIVERING 1/4 MILLION HORSEPOWER



## PORTLAND GENERAL

Electric Company