

# Stocks Move Irregularly In Light Volume

New York, Dec. 21 (AP)—Attempts to break the lengthy stock market stalemate met with further opposition in today's brief session and leading issues fogged over a narrowly irregular route.

While scattered specialties managed to tack on gains of a point or more, and fractional advances were fairly well distributed, minor declines were plentiful and numerous stocks ended at Friday's final quotations.

Dealings were about on par with those of last Saturday, the two hour turnover approximating 400,000 shares.

Cheerful business items brought support for a handful of favorites but lack of much bullish war news, combined with more year-end tax selling to establish losses or gains for income statements, kept speculative forces subdued.

Steel operations are scheduled to start next week around present levels. Department store sales in the week ended Dec. 14, according to the federal reserve report today, were down one per cent as compared with a year ago. Other types of stores are making a much better showing and the average net gain over a year ago for all retail establishments this week amounts to 6 to 9 per cent, according to Dun and Bradstreet.

Dow Jones closing stock averages: Industrial 128.89 up 0.02; rail 27.17, up 0.03; utility 19.59 up 0.03.

Stock sales approximated 420,000 shares against 390,000 a week ago. Curb stock sales were 109,000 shares compared with 114,000 last Saturday.

# Millard Retires After 38 Years

E. B. Millard, oldest employee in point of service in the Ladd & Bush bank but one, William B. Walton, who preceded him in employment by a few years, will retire January 1 after serving since December 27, 1902.

As a mark of esteem from his fellow workers Millard is wearing a gold watch which presented to him by them and bearing the engraved inscription, "1902-1940. E. B. Millard from your Ladd & Bush Fellow Workers." Some 60 employees of the bank joined in making the gift possible and also in its presentation.

One evening this week he was called to the basement of the bank where the employees were assembled and the ceremony of presentation gone through with a number of eulogies by bank officials and workers offered to the retiring employee.

Millard remarked that during the 38 years of his employment at the bank it was the first time in his recollection that the employees joined together as a unit to give such a present outside of collections for someone getting married or for flowers.

"And the strangest meeting of the officers, directors and employees," he commented, "where all of them gathered to declare a dividend payable to one man."

# Orchestra Leader Dies from Injuries

Madera, Calif., Dec. 21 (AP)—Hal Kemp, 35, the orchestra leader, died here today from complications that developed from injuries he received in an automobile accident Wednesday. Death came from pneumonia.

His physicians announced yesterday that his condition was grave, and he was placed in an oxygen tent. The bandleader lived in Beverly Hills. His wife was at his bedside.

One of Kemp's lungs was punctured and several ribs were broken when his car and another collided near here.

# Salem Markets

Compiled from reports of Salem dealers for the guidance of Capital Journal readers. (Revised daily). No guarantees.

**Buying Prices**  
Feed Barley—\$22 ton.  
Wheat—Per bushel, No. 1 white and red.  
Feed Oats—\$22 ton.  
Retail Prices  
Egg Mash—\$2.40 cwt. 2nd grade \$2.15.  
Chicken Scratch—\$1.85 cwt.  
Whole Corn—\$1.90; cracked \$2.

**Hogs—Midwest Market top grades**  
140-160 lbs \$5.75; 165-210 lbs \$6.25; 200-225 lbs \$5.75; 225-250 lbs \$5.75.  
Veal—1 lb dressed.  
Poultry—Heavy crows nice 12c lb. Leghorns No. 1 6-8c lb. fryers 13c. Old roosters 8c lb. Colored fryers 15c.

**Butter**—Buying prices: Large crate 24c, large standard (B) 24c, medium A 21c, extra B med. 19c. Pulets 16c. Wholesale Eggs—Large grade A 27c, large standards (B) 24c, med. A 24c. Butter—Prima: A grade 35 1/2c lb. B 34 1/2c lb. quarter 30 1/2c. Butterfat: Premium 34 1/2c, No. 1 33 1/2c, No. 2 31 1/2c lb.

**Markets Briefed**  
(By United Press)  
Stocks irregular and quiet.  
Bonds irregular; U. S. government lower.  
Curb stocks irregularly higher.  
Foreign exchange easy.  
Cotton firm.  
Wheat up 1/2 to 3/4 cents and corn up 1/4 to 1/2.

# New York Stocks

Closing Quotations by Associated Press

|                          |         |                     |         |
|--------------------------|---------|---------------------|---------|
| Allied Chem. & Dye       | 162     | Montgomery Ward     | 36      |
| American Can             | 86 1/2  | Nash Kelvinton      | 4 1/2   |
| Allis-Chalmers           | 36 1/2  | National Biscuit    | 15 1/2  |
| American Cat. & Fdy      | 29 1/2  | National Dairy Prod | 23 1/2  |
| American Rad. & Ind      | 6 1/2   | National Distillers | 23 1/2  |
| American Rolling Mills   | 15      | National Lead       | 13 1/2  |
| American Smelt. & Ref    | 42      | N. Y. Central       | 16 1/2  |
| American Tel. & Tel.     | 169 1/2 | N. Am. Aviation     | 16 1/2  |
| American Tobacco B       | 68 1/2  | North American Co.  | 16 1/2  |
| Aviation Corp.           | 4 1/2   | Northern Pacific    | 5 1/2   |
| American Water Works     | 6 1/2   | Ohio Oil            | 6 1/2   |
| Am. Zinc L. & S.         | 16 1/2  | Oils Steel          | 21 1/2  |
| Anacosta                 | 20 1/2  | Pacific Amer. Fish  | 2 1/2   |
| Armour III               | 4 1/2   | Pac Gas & Elec      | 28      |
| Atchafon                 | 16 1/2  | Pacific Tel. & Tel. | 13 1/2  |
| Baldwin                  | 17 1/2  | Packard Motor       | 13 1/2  |
| Bendix Aviation          | 33 1/2  | Pan-Am. Airway      | 15 1/2  |
| Boehling Steel           | 17 1/2  | Param               | 10 1/2  |
| Boiling Airplane         | 8 1/2   | J. C. Penney        | 8 1/2   |
| Borden                   | 19      | Rayonier            | 21 1/2  |
| Borg & Warner            | 18 1/2  | Phelps Dodge        | 33 1/2  |
| Calif. Packing           | 17 1/2  | Phillips Petroleum  | 39 1/2  |
| Callahan Z-L             | 1 1/2   | Pioneer & Gambie    | 55 1/2  |
| Calumet Hee              | 6 1/2   | Public Serv. Nj     | 28 1/2  |
| Canada Dry               | 12 1/2  | Pulman              | 25 1/2  |
| Canadian Pacific         | 3 1/2   | Radio               | 4 1/2   |
| Caterpillar Tractor      | 49 1/2  | Rayonier            | 17 1/2  |
| Colman                   | 27 1/2  | Rayonier Pfd        | 28 1/2  |
| Chesapeake & Ohio        | 41 1/2  | Republic Steel      | 21 1/2  |
| Col. Gas & Elec          | 4 1/2   | Richfield Oil       | 8 1/2   |
| Colt Solvent             | 17 1/2  | Safeway Stores      | 77 1/2  |
| Commonwealth Sou.        | 10 1/2  | Sears Roebuck       | 10 1/2  |
| Consolidated Aircraft    | 24      | Shell Union         | 10 1/2  |
| Consolidated Edison      | 21 1/2  | Socoy Vacuum        | 8 1/2   |
| Consolidated Oil         | 8 1/2   | Southern Pacific    | 25 1/2  |
| Con'tl Can               | 8 1/2   | Sperry Corp         | 13 1/2  |
| Corn Products            | 43 1/2  | Standard Brands     | 6 1/2   |
| Crown Zellerbach         | 14 1/2  | Standard Oil Call   | 18 1/2  |
| Curtis Wright            | 17 1/2  | Standard Oil Ind    | 18 1/2  |
| Douglas Aircraft         | 7 1/2   | Standard Oil Nj     | 25 1/2  |
| Du Pont                  | 16 1/2  | Stone Webster       | 7 1/2   |
| Eastman Kodak            | 132     | Studebaker          | 8       |
| El. Power & Light        | 7 1/2   | Sunshine Mining     | 13 1/2  |
| General Electric         | 32 1/2  | Texas Corp          | 13 1/2  |
| General Foods            | 36      | Trans-America       | 4 1/2   |
| General Motors           | 49 1/2  | Union Carbide       | 68      |
| Goodyear                 | 13 1/2  | Union Oil Calif     | 12 1/2  |
| Goodyear Tire            | 10 1/2  | Union Pacific       | 7 1/2   |
| Great Northern           | 20 1/2  | United Airline      | 13 1/2  |
| Greyhound                | 10 1/2  | United Aircraft     | 42 1/2  |
| Illinois Central         | 15 1/2  | United Corp         | 1 1/2   |
| Insp. Copper             | 12 1/2  | United Fruit        | 4 1/2   |
| International Harvester  | 50 1/2  | U. S. Rubber        | 22      |
| International Nickel     | 22 1/2  | U. S. Rubber Pfd.   | 22      |
| International P. & Pulp  | 6 1/2   | U. S. Steel         | 43 1/2  |
| International Tel. & Tel | 23 1/2  | Vanadium Steel      | 10 1/2  |
| Johns Manville           | 58 1/2  | Warner Pict         | 3 1/2   |
| Kennecott                | 35 1/2  | Western Union       | 20 1/2  |
| Libbey-O-Ford            | 39 1/2  | Westinghouse Elec.  | 101 1/2 |
| Lockheed                 | 27 1/2  | Woolworth           | 30 1/2  |
| Loew's                   | 31 1/2  |                     |         |
| Long-Bell A              | 10 1/2  |                     |         |

# Market Quotations

Portland Outside Market  
The farmers' outside wholesale market was active today. Prices were mostly steady.

Cabbage generally 85-90c. Sprouts active 80-85c. Mid-Columbia spinach \$1.35 an orange box. China lettuce 80c. Mustard greens 25c dozen bunches. Winter cress 60-70c.

Some local Utah celery 70c. White celery hearts 80c early. Carrots in demand at 35-40c doz. bunches. Turnips 40c lb. Radishes 25c dozen. Potatoes and onions unchanged.

**Produce Exchange**  
The following prices were named on the produce exchange effective today:  
Butter—Cube ex. 32 1/2c, standard 32c, prime firsts 31 1/2c, firsts 31c. Jo. Cheese—Oregon triple 17c, leaf 17 1/2c lb. Jobbers pay 1 1/2c less.

**Flour**  
Domestic flour—Selling prices, city delivery—1 to 25-bbl. lots: Family packages 49c 56-60c; bakers' hard wheat, net 48.00-57.70; bakers' bluestem 48.00-57.70; 2nd med. 22c, small 20c; soft wheat 44.70-75; graham 44.30; whole wheat 44.45 bbl.

**Portland Wholesale Prices**  
Butter—Prima: A grade 35c lb. in parchment wrappers, 36c in cartons. B grade 34c in parchment wrappers, 35c in cartons.  
Butterfat—First quality maximum 1c of 1c. acid, delivered Portland 34-34 1/2c; premium quality (maximum of 3/4c. acid) 35-35 1/2c; second quality 32-32 1/2c; valley routes and country prices 33 1/2c lb.

**Cheese—Selling prices to Portland retailers:** Tillamook triplets 21c lb. leaf 22c. Triplets 19c. 10c. leaf 20c lb. L.O.B. Tillamook.  
Eggs: Prices to producers—Extras 24c, med. 22c, small 21c dozen. Standards 19c-22c, med. 22c, small 17c dozen. Resale to retailers 4c higher for cases, 5c higher for cartons.

**Livestock**  
Cattle—Oregon: No. 1 grade Leghorn broilers 11 1/2-12c. No. 14c. fryers under 3 lbs. 14c. springers 2 1/2-4 lbs. 14c. roasters over 4 lbs. 15c. Leghorn hens over 3 1/2 lbs. 12c. Quilts, hens 25-30c. Colored hens over 5 lbs. 14c. 4-5 lbs. 15c lb. Old roosters 8c up.

**Selling prices to retailers—Light hens:** 12c. Leghorns 12c. Heavy fowls 15c lb. Pekin ducks 14-15c lb. Colored springs, light 14-15c lb. heavy 15c, broilers 1 1/2-2 lbs. 14c, old crows 6-7c. Quilts, hens 25-30c each. Dressed No. 1, 17-18c lb. Rabbits—Geeased No. 1, 17-18c lb. Dressed Turkeys—Nominal selling prices: 11-12 lbs. 18-18 1/2c. Buying: 16-18 1/2c lb.

**Butter**—Dressed No. 1, 17-18c lb. Fresh Fruit  
Apples—Oregon: H.R. ex. fcy 90c; 1 1/2 Spitzbergen H.R. ex. fcy 80c; 1 1/2 Newtoma H.R. ex. fcy 83c; 7-7 F.F. 70c Delicious ex. fcy 81.50; California 1 1/2 box Gravenstein 45-50c; face-fine 70c-81c Hood River Gravenstein, com. 41.00-50c H.R. 80c box Ex. fcy Yakima Delicious 42 cents; 1 1/2 box Gravenstein 45-50c Delicious com. 41.25; conlains H.R. ex. fcy 81.75 box.  
Bananas—Special brand 11.75-81.90 box, others 11.25-75.  
Bananas—No. 1 bunches 5 1/2c lb. Winter Bananas, f-1 70c Pippins, H.R. hands 6c lb.  
Cranberries—McFarlane Ore. Wash 43-45c. late Howa 33.50; Brandon Stankovich 12c.

**Grain**  
Grain—Oregon: 22-25c. extra. 22-25c. natural 22.50-7c. Florida fcy 33.50. Texas pink 31.15-25c. per case Arizona naturals 22-22 1/2c extra.  
Flour—California: fcy 42.25-55, choice 43.05-75c, wrapped, packed 41.75-42.15. Oregon—Navel 33.10-33.20, fancy 33.75; place pack 32.15-50c. Available cases 100; no cases. Compared to Friday last week: Fed. 41.00-42.00; extra fancy 41.75 box. Pineapple—Hawaii 68.50-87c case. Strawberries—California 12c. Sweets 12c. 1 1/2-2 Florida 11.65-75c Ore 24c 22.50-30c Roseburg 41.50.  
Watermelons—California. 1-1 1/2c. Boardman 8c-1c lb.

**Fresh Vegetables**  
Artichokes—California. 27.75-63. Cauliflower—No. 1 local 81-81 1/2; No. 2 60-70c crate. Utah type 21.15-25c. Celery—Utah type 21-25c crate. Lettuce—California 11.35-82c doz. Col 32-60c; root 45c doz. Oregon heads 70c-81. Green 81.85. Iowa 81.65. Hulsehouse 81.25-80c. 2nd grown 50-80c box. Oregon white 81.50.  
Beans—California. green 11c lb. Youngs 10c lb.

**Cabbage**—No. 1 local 11.15-40c. Imperial 23.10-25c. Arizona 22.25-32c. Roseburg 41.50. Pointed local 75-90c flat crate; Maryhill 11.25-35c. red 75-90c flat crate. Northern 75c-81. No. 1 Oregon—California 22.50-75c. Walla Walla hot-house 82-82.25 box. Corn—No. 1, 81c crate. Eggplant—Local 75c-85c flat.

**Garlic—Oregon 10c lb. Mex 18c. No 1 local 20-25c lb.**  
Lettuce—No. 1 local 75c, mid-Columbia 81-81.05; Cal. 1.75-22.10; Arizona 21.15-25.  
Mushrooms—Hot-house 40c per lb. 17 1/2c for 1/2 lb.  
Onions—Sets, white 6 1/2c lb. brown 5 1/2c. Texas wax 22.50 bag. Red 21.85. New wax 21.85. Yakima 90c a box. Danvers 21-31.10.  
Peas—California 10-11c lb.  
Potatoes—Deschutes Gems 81.50-82. King of the Hill 30. Malin 42-28. Mex 43.50-50. Deschutes No. 1 81.10-15; No. 2 81.10-15.  
New Potatoes—Fia 82.00-75, small 82.00 Calif. whites 10; 40c 21.10. Re-packed 100s 82.05-18. Locals 81.18 orange box.  
Sweet Potatoes—Cal. 81.40-85c crate. Yonkers 21.15-25.  
Squash—Danish 40-50c. Zucchini Calif. 1.75-85 lb.  
Tomatoes—Local 25-30c box. Hots 21.15-25. ex. fcy. 1.75-1.75. fcy. 1.50-75c, choice 1.25-50c. Mexican 44.50 lb. Sub-standard 11-12 1/2c lb. Merced 11.25-50. Dales 28-30c. Millerton 8-10c. Lamb, spring 14 1/2-15c. 3c lb. Mid-Columbia 30-45c. Calif. 25.00-30c; as is 23-25c lb.

**Wool**  
Wool—1940 eastern Oregon 80-33c lb. Cross bred 34-35c.  
Hops—Oregon 1940 Seedless, 80c, seed 22-25c lb.  
Portland Grain  
Wheat, Dec. 21 (AP)—Wheat futures: 1940-41, 11 1/2-12 1/2c. Cash grain: Oats, No. 2 38-1/2c, white 32 1/2c, barley, No. 2 45-1/2c, white 52 1/2c. No. 1 flax 62 1/2c. Wheat (60-62), soft, winter white 75, white club, western red 70.  
Hard red winter: ordinary 11 1/2c 12 1/2c 13 1/2c 14 1/2c. Hard white: 11 1/2c 12 1/2c 13 1/2c 14 1/2c.  
Chicago Record: Wheat 10, flour 4, corn 4, millfeed 2, barley 1.  
Portland Livestock  
Cattle, Dec. 21 (AP)—(USDA) Hogs for week 4050 salable. Market closed 35-45c higher after steady opening. Late bulk 165-215 lb. drivings 60.75-85, extreme top 80.00; early sales included carloads 61.50-60c. med. wt. 50-75c below top, under wt. 75c-81.25 down. Packing sows 44.50-85 mainly late; feeder pigs closed 41 up, 45-45.50. Choice record 2250 salable; calves 200. Compared to week ago, steers about steady, cows mostly 25c up, heifers and bulls fully steady, vealers 80c up. Fed steers 45-50c, calves and feeders 77-80.25, fed heifers 82-27.5, light dairy heifers 84.75-85.75; cullers com. 35-50c, fat 45-50c, fat dairy 45-50c. Good choice 2000 salable. Compared to week ago, fat lambs mostly 25c, spots 50c lower, ewes steady. Good-choice trucked-in wool lambs 77.5c-80c. Choice 82.25, few feeders 80-87, shorn mostly 77 down, early shorn to 77.50. Good slaughter ewes 24-44.50.

**Chicago Wheat**  
Chicago, Dec. 21 (AP)—Wheat futures: open high low close. Dec. 21 89 88 88 89.10. May 84 84 84 84 1/2. July 79 79 78 79 1/2-78 1/2.  
Chicago Livestock  
Chicago, Dec. 21 (AP)—(USDA) Hogs 6800, salable 300; undressed firm quotable top around 60.25 or better. Salable cases 100; no cases. Compared to Friday last week: Fed. 41.00-42.00; extra fancy 41.75 box. Pineapple—Hawaii 68.50-87c case. Strawberries—California 12c. Sweets 12c. 1 1/2-2 Florida 11.65-75c Ore 24c 22.50-30c Roseburg 41.50.  
Watermelons—California. 1-1 1/2c. Boardman 8c-1c lb.

# Hospital Herd Breaks Record For Averages

Portland, Dec. 21—The herd of registered Holstein cattle owned by the Morningside hospital of Portland, Ore., is announced as having broken the national record for high herd averages, according to the Holstein-Friesian Association of America. This average, 19,927 pounds of milk and 683.0 pounds of butterfat is 17 1/2 pounds of fat higher than the former mark of 665.5 pounds established by the herd of Lee E. Gale of Mecosta, Mich.

The herd of nine cows produced a total of 89,986 quarts of milk for the year, or enough to supply a city the approximate size of Salem a pint of milk for every man, woman and child for six days.

The Morningside hospital herd, owned by Wayne W. Coe, and managed by Johnny Roetschender, consists largely of animals whose ancestors have been bred in Oregon for more than half a century. The two top producing members of the group trace directly to the herd of P. A. Prackes, Scappoose, Ore., founded around 1885, was brought to this section from Holland.

Gratia, Morningside's phenomenal producer was featured at the last Pacific International as the dairy queen of the show. She produced an average of 45 quarts of milk each day for the entire year. She is again on test and bids to go over the 1,000 pound fat mark.

The present herd sire at Morningside was bred by Frank Durbin of Salem. This bull's granddam produced over 1,000 pounds of butterfat, and lived to be 22 years of age. Her brother, the Johnny bull, used in the Jacob Luscher herd at Fairview, Ore., lived until he was 18 years of age, one of the longest lived bulls on record.

# Wheat Futures Break Sharply

Chicago, Dec. 21 (AP)—Wheat futures broke sharply today under general liquidation.

After a period of firmness around mid-session, all grains encountered increasing liquidation. Wheat finished off 1/2 to 3/4c, Dec. 89 1/2-90. Corn was off 1/4 to 1/2c, Dec. 60 1/4-60; oats off 1-5 to 1 1/2c, Dec. 40 1/2, and rye 1/2 to 1/2c lower, Dec. 42 1/2. Soy beans were off 1/4 to 1/2c, Dec. 91 1/2. Today was the last day of trading in December futures.

Corn futures showed a steady to firm undertone in a mixed trade. Receipts on track were estimated at 118 cars. An early firm tone was a reflection of short covering.

Soy beans were easy under commission house pressure while oats held mostly steady. December oats showed firmness at times.

# Union of Churches For Lasting Peace

London, Dec. 21 (AP)—Heads of the Protestant and Roman Catholic churches in Great Britain put forward joint proposals today for the consideration of statesmen after the war to insure a real and lasting peace.

They joined their own five proposals, aimed at social and economic equality and justice, with five which Pope Pius offered last Christmas even, suggesting that together they would provide for lasting peace.

The association of the churches, including the established Church of England of which King George is supreme head, was believed to be without precedent in a gesture of the sort.

# Christmas Seal Sale Reaches \$4201

A younger generation will be presented at 7 o'clock Sunday night at the American Lutheran church. The program:

Part I: Carol—Hark the Herald Angels Sing Come Hither, O King of Kings The Christmas Story. Part II: Vizio Koala, Song Leader Words of welcome by Rev. Erikson The Christmas Story. Part III: Gordon Murdoch Christmas Prayer, Oscar Litchell, Sust. Part IV: Department, Mrs. Louis Anderson. Supp.—Singing and drama. Part V: Lightening Service. Violin Offertory. Christmas Carol. Sunday School and Audience Remarks by Superintendent. Christmas cheer for all children present.

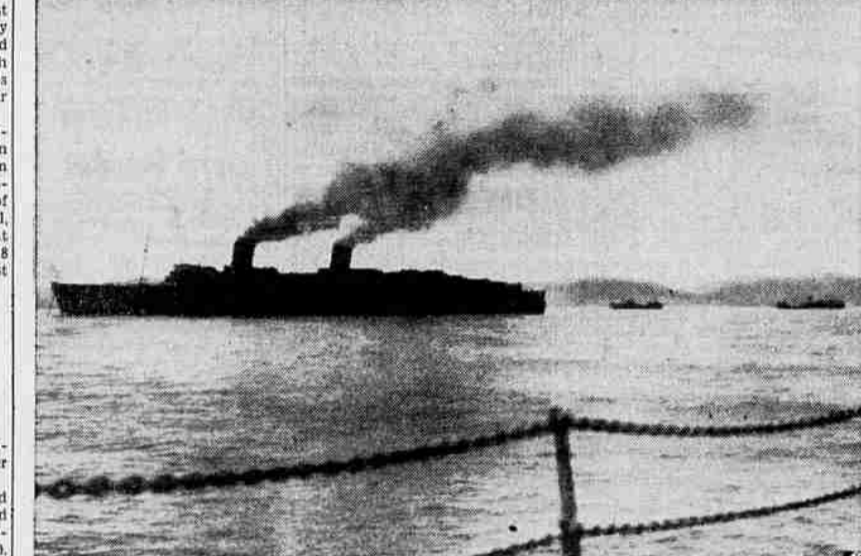
# This is First Day of Winter

New York, Dec. 21 (AP)—Just in case you didn't know, this is the first day of winter and the shortest day in the year. And three shopping days are left until Christmas.

Portland, Ore., Dec. 21 (AP)—The Crossett Western company was awarded \$100 by a federal court jury yesterday for Bonneville power line right of ways across its property south of Wauna.



Train Derailment Injured Two—The engine and eight cars of a 16-car combination passenger and freight train overturned near Palmdale, Calif., injuring the engineer and fireman. Twelve passengers in the last car were uninjured. In foreground is one wrecked car, and in left background in the locomotive lying on its side. — Associated Press Photo.



Queen Elizabeth Visits South Africa—Camouflaged in grayish black, the 85,000-ton British liner Queen Elizabeth, largest ship afloat, rides at anchor in Capetown, South Africa. This picture was snapped by a crew member of the round-the-world cruise ship President Garfield. The Queen Elizabeth left New York for a secret destination November 13. — Associated Press Photo.

# Christian Service Group Entertained

Jefferson—The Woman's Society of Christian Service of the Methodist church held a covered dish luncheon and meeting at the home of Mrs. Earl Phelps Wednesday at 1 o'clock.

Mrs. Grace Thurston led the devotionals and in response to roll call Christmas quotations were given. The Christmas lesson was in charge of Mrs. J. G. Fontaine. Mrs. E. H. Redmond gave a reading, "The Other Wise Man."

Members present included Mrs. Grace Thurston, Mrs. Earl Lyles, Mrs. E. B. Redmond, Miss Addie Libby, Mrs. J. G. Fontaine, Mrs. George C. Mason, Miss Marjorie Fontaine, Mrs. Lorena Baltimore, Mrs. Mary Powell and Mrs. Earl Phelps. Guests were Mrs. W. J. Thacker and Rev. E. C. Alford.

# Reporter Gets New Cocker Spaniel

Tacoma, Dec. 21 (AP)—The cocker veld in the Leonard Coatsworth household was filled today by a six-week-old puppy, complete with bed, blanket, comb and flea powder.

The pup, donated by a Richmond, Va., dog lover, arrived here yesterday to be met by Coatsworth, Tacoma newspaper man, and his 16-year-old daughter, Gerry, who had stayed away from school to purchase supplies for the pup's every need.

Coatsworth lost his beloved cocker, Tubby, when he was forced to abandon his automobile on the Tacoma Narrows bridge while the huge span was disintegrating. The terrified dog refused to leave the car and went down with it when the bridge fell into Puget Sound.

# Cutter Guides Boat Into Port

Astoria, Dec. 21 (AP)—The steam schooner West Coast, which sent a minor distress call off Umpqua bar yesterday after being disabled by a gale, was guided into port last night by the coastguard cutter Onondaga.

The 800-ton wooden vessel, her seams sprung and eight feet of water in the hold, was accompanied to the Columbia river bar by the coastguard cutter pulaski. The Onondaga then stood by while she limped into port.

W. L. Williams, Portland, one of the owners, said the 27-man crew of the 23-year-old ship escaped injury. She was en route from Bellingham, Wash., to Los Angeles with lumber. Captain John Olson reported.

# Orchard Grass Orders Taken

Seed orders for leafy strain orchard grass for spring planting may now be placed with the county agent's office, reports W. G. Nibler, assistant county agent.

These special strains, S-26 and S-143, have been selected for their leafiness and palatability, and ability to stand up under pasturing. At present there is no domestic supply of these grasses and seed must be imported at the price of 70 cents a pound.

"We would like to get a small domestic supply of these grasses so that a market may be developed," states Mr. Nibler.

Since these grasses are low seed producers, it is probable that they can most satisfactorily be grown in rows three