

Stock Advance Led by Steels; Volume Light

New York, Dec. 21 (U.P.)—Steel shares again led the stock market higher today but profit-taking curtailed gains and brought lighter trading near the close.

Forecasts for improvement in steel production plus possibility of an armament program and speeding up of the administration's housing program maintained the favorable tone that was displayed in Monday's session.

U. S. Steel was the active leader and maintained a fractional gain after showing an earlier advance of more than a point.

Some oil shares showed activity in line with continued good output for the industry next year. Metal shares, active in Monday's advance, remained fairly steady.

Some oil shares showed activity in line with continued good output for the industry next year. Metal shares, active in Monday's advance, remained fairly steady.

Some oil shares showed activity in line with continued good output for the industry next year. Metal shares, active in Monday's advance, remained fairly steady.

Some oil shares showed activity in line with continued good output for the industry next year. Metal shares, active in Monday's advance, remained fairly steady.

Some oil shares showed activity in line with continued good output for the industry next year. Metal shares, active in Monday's advance, remained fairly steady.

Some oil shares showed activity in line with continued good output for the industry next year. Metal shares, active in Monday's advance, remained fairly steady.

Some oil shares showed activity in line with continued good output for the industry next year. Metal shares, active in Monday's advance, remained fairly steady.

Some oil shares showed activity in line with continued good output for the industry next year. Metal shares, active in Monday's advance, remained fairly steady.

Some oil shares showed activity in line with continued good output for the industry next year. Metal shares, active in Monday's advance, remained fairly steady.

New York Stocks

Closing Quotations by Associated Press

Table of stock market closing quotations including Al Chem & Dye, Allied Stores, Am Can, etc.

Market Quotations

Portland East Side Market

Offerings Tuesday at the East Side Farmers' wholesale market were in direct contrast to those of Monday.

Some Lady apples were offered 50c each, while others were 40c.

Portland Sugar, Flour Portland, Dec. 21 (U.P.)—Sugar: Berry or fruit, 100a, 85.20; bales, 85.30; beet, 85.15 cents.

Portland Livestock Chicago, Dec. 21 (U.P.)—Hogs, 300, market active, steady to strong.

Portland Wool Boston, Dec. 21 (U.P.)—Quotations on Texas wools were showing a firmer tendency, the U. S. agriculture reported today.

Portland Fruit Portland, Dec. 21 (U.P.)—Quotations on citrus fruit were steady today.

Fibert Status In Turkey Reported On

The following on the 1937 fibert situation in Turkey comes from Belgrade, Yugoslavia, as of November 8 there, from a government source and quoted in the California Fruit News.

The 1937 production of fibert in Turkey is now approximated at about 610,000 quintals, or about the same volume in 1936.

Extra Large Eggs Drop Two Cents Portland, Ore., Dec. 21 (U.P.)—Extra large eggs dropped two cents a dozen today.

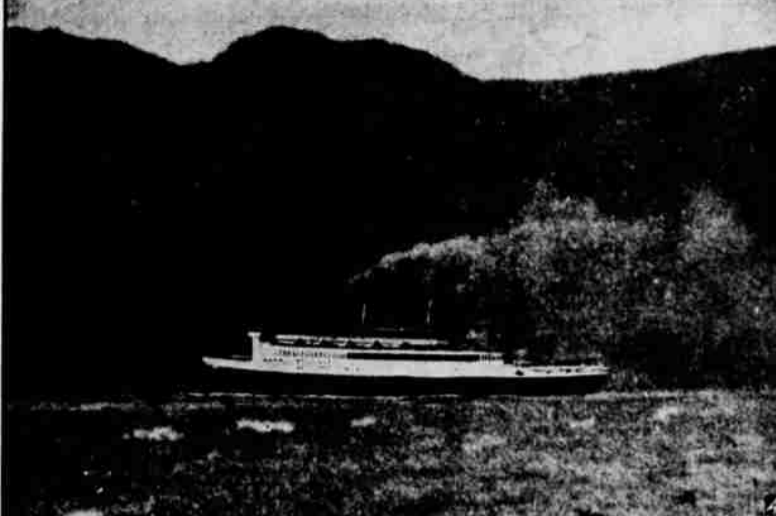
Farm Program Extended to Jan. 15 The last day for entering the 1938 agricultural conservation program has been extended to January 15 by the state committee, says Harry L. Riches, county agricultural agent.

Recovery Policy Wins Support Washington, Dec. 21 (U.P.)—Several senators publicly endorsed in the senate yesterday the 2000 word "declaration of policy" for business recovery which was circulated in the senate last week with bi-partisan support.

Road Fund Slash Continuation of— Road Fund Slash —from page 1

Business Grows, Profits Lower Portland, Dec. 21 (U.P.)—A continuation of growth of business but a decrease in profits was reported for the Pacific Telephone & Telegraph company for the first 11 months of 1937 by N. R. Fowler, president.

Citrus Fruit Movement Starts Portland, Dec. 21 (U.P.)—Steamship transportation of California citrus fruit to Portland, discontinued in the waterfront strike of more than a year ago, resumed today with the arrival of a carload of oranges on the Steamer Coast Trader.



\$8,000,000 Luxury Liner President Hoover Aground—A sailor on the German freighter Preussen took this picture of the S. S. President Hoover after she went aground on rocky Hoihoist Island near Puro-moa. Passengers were taken to Manila by another Dutch liner. (Associated Press Photo.)

Continuation of— Novelties —from page 1

Last summer he discovered he had five cavities and, unwilling to go to a dentist, Elliott had them filled himself with a liquid solder.

Happy Day Kittanning, Pa.—Christmas will be a day of rejoicing for the Tobias Meyers family—140 members.

Up in the Air Idaho Falls, Idaho—Farmer Fred Daniels suffered three broken ribs when two of his turkeys took him for a ride.

Postal Trust St. Paul, Minn.—"Uncle Bob" of St. Paul has unbonded faith in Uncle Sam's letter carriers.

Recovery Policy Wins Support Washington, Dec. 21 (U.P.)—Several senators publicly endorsed in the senate yesterday the 2000 word "declaration of policy" for business recovery which was circulated in the senate last week with bi-partisan support.

25,000 Tons Prunes In Agreement Growers' pooling agreements totaling 25,000 tons of prunes have been received and accepted by the Prune Credit corporation of California up to the present time, it was announced last week, says the California Fruit News.

Citrus Fruit Movement Starts Portland, Dec. 21 (U.P.)—Steamship transportation of California citrus fruit to Portland, discontinued in the waterfront strike of more than a year ago, resumed today with the arrival of a carload of oranges on the Steamer Coast Trader.

Winter Wheat Plantings Way Above Average

Washington, Dec. 21 (U.P.)—The department of agriculture reported today a winter wheat acreage of 37,482,000 and condition on December 1 of 76 per cent indicating a crop of 630,000,000 bushels.

Students Returning For Yule Vacation Hazel Green—Sanford Davis will spend the holidays here with his parents. Sanford is a student at Oregon State. The Davis family is expecting their grandson, George Donnigan, of Milwaukee, who will remain with them through the holiday season while his parents make a motor trip to California.

Recovery Policy Wins Support Washington, Dec. 21 (U.P.)—Several senators publicly endorsed in the senate yesterday the 2000 word "declaration of policy" for business recovery which was circulated in the senate last week with bi-partisan support.

Robinson Reed Divorced Continuation of— Robinson Reed Divorced —from page 1

Business Grows, Profits Lower Portland, Dec. 21 (U.P.)—A continuation of growth of business but a decrease in profits was reported for the Pacific Telephone & Telegraph company for the first 11 months of 1937 by N. R. Fowler, president.

Citrus Fruit Movement Starts Portland, Dec. 21 (U.P.)—Steamship transportation of California citrus fruit to Portland, discontinued in the waterfront strike of more than a year ago, resumed today with the arrival of a carload of oranges on the Steamer Coast Trader.

Business Grows, Profits Lower Portland, Dec. 21 (U.P.)—A continuation of growth of business but a decrease in profits was reported for the Pacific Telephone & Telegraph company for the first 11 months of 1937 by N. R. Fowler, president.

Trade Circular For Walnut Men Published

The California Walnut Growers' association has recently sent out its trade circular No. 3 of the present season, from which the following is quoted in the California Fruit News.

The 1937 walnut harvesting and packing season has just been concluded. The crop has fallen about 25,000 bags below final pre-season estimates.

Continuation of— Order Physical Exams —from page 1

Walker-Clarke Kelso, Wash., Dec. 21 (U.P.)—Marriage licenses: L. Weidon Walker and Thelma Clarke, both of Salem, Ore.

Markets Closed On Christmas Day New York, Dec. 21 (U.P.)—The world's leading commodities and securities markets will be closed on Christmas day.

Births, Deaths Marriages Births North Howell—Mr. and Mrs. George Cline are the parents of a 7 pound 12 ounce baby girl, born at Silvertown hospital December 17, named Barbara Jean.

Business Grows, Profits Lower Portland, Dec. 21 (U.P.)—A continuation of growth of business but a decrease in profits was reported for the Pacific Telephone & Telegraph company for the first 11 months of 1937 by N. R. Fowler, president.

Advertisement for Dr. Chan Lam, Chinese Medicine Co., featuring natural remedies for various ailments.

Salem Markets

Compiled from reports of Salem dealers, for the guidance of Capital Journal readers. (Revised daily.)

Wheat, per bushel: No. 1 white and red sacked 87c; No. 2 white 82c; No. 3 white 77c; No. 4 white 72c; No. 5 white 67c; No. 6 white 62c; No. 7 white 57c; No. 8 white 52c; No. 9 white 47c; No. 10 white 42c; No. 11 white 37c; No. 12 white 32c; No. 13 white 27c; No. 14 white 22c; No. 15 white 17c; No. 16 white 12c; No. 17 white 7c; No. 18 white 2c; No. 19 white 1c; No. 20 white 1c; No. 21 white 1c; No. 22 white 1c; No. 23 white 1c; No. 24 white 1c; No. 25 white 1c; No. 26 white 1c; No. 27 white 1c; No. 28 white 1c; No. 29 white 1c; No. 30 white 1c; No. 31 white 1c; No. 32 white 1c; No. 33 white 1c; No. 34 white 1c; No. 35 white 1c; No. 36 white 1c; No. 37 white 1c; No. 38 white 1c; No. 39 white 1c; No. 40 white 1c; No. 41 white 1c; No. 42 white 1c; No. 43 white 1c; No. 44 white 1c; No. 45 white 1c; No. 46 white 1c; No. 47 white 1c; No. 48 white 1c; No. 49 white 1c; No. 50 white 1c; No. 51 white 1c; No. 52 white 1c; No. 53 white 1c; No. 54 white 1c; No. 55 white 1c; No. 56 white 1c; No. 57 white 1c; No. 58 white 1c; No. 59 white 1c; No. 60 white 1c; No. 61 white 1c; No. 62 white 1c; No. 63 white 1c; No. 64 white 1c; No. 65 white 1c; No. 66 white 1c; No. 67 white 1c; No. 68 white 1c; No. 69 white 1c; No. 70 white 1c; No. 71 white 1c; No. 72 white 1c; No. 73 white 1c; No. 74 white 1c; No. 75 white 1c; No. 76 white 1c; No. 77 white 1c; No. 78 white 1c; No. 79 white 1c; No. 80 white 1c; No. 81 white 1c; No. 82 white 1c; No. 83 white 1c; No. 84 white 1c; No. 85 white 1c; No. 86 white 1c; No. 87 white 1c; No. 88 white 1c; No. 89 white 1c; No. 90 white 1c; No. 91 white 1c; No. 92 white 1c; No. 93 white 1c; No. 94 white 1c; No. 95 white 1c; No. 96 white 1c; No. 97 white 1c; No. 98 white 1c; No. 99 white 1c; No. 100 white 1c; No. 101 white 1c; No. 102 white 1c; No. 103 white 1c; No. 104 white 1c; No. 105 white 1c; No. 106 white 1c; No. 107 white 1c; No. 108 white 1c; No. 109 white 1c; No. 110 white 1c; No. 111 white 1c; No. 112 white 1c; No. 113 white 1c; No. 114 white 1c; No. 115 white 1c; No. 116 white 1c; No. 117 white 1c; No. 118 white 1c; No. 119 white 1c; No. 120 white 1c; No. 121 white 1c; No. 122 white 1c; No. 123 white 1c; No. 124 white 1c; No. 125 white 1c; No. 126 white 1c; No. 127 white 1c; No. 128 white 1c; No. 129 white 1c; No. 130 white 1c; No. 131 white 1c; No. 132 white 1c; No. 133 white 1c; No. 134 white 1c; No. 135 white 1c; No. 136 white 1c; No. 137 white 1c; No. 138 white 1c; No. 139 white 1c; No. 140 white 1c; No. 141 white 1c; No. 142 white 1c; No. 143 white 1c; No. 144 white 1c; No. 145 white 1c; No. 146 white 1c; No. 147 white 1c; No. 148 white 1c; No. 149 white 1c; No. 150 white 1c; No. 151 white 1c; No. 152 white 1c; No. 153 white 1c; No. 154 white 1c; No. 155 white 1c; No. 156 white 1c; No. 157 white 1c; No. 158 white 1c; No. 159 white 1c; No. 160 white 1c; No. 161 white 1c; No. 162 white 1c; No. 163 white 1c; No. 164 white 1c; No. 165 white 1c; No. 166 white 1c; No. 167 white 1c; No. 168 white 1c; No. 169 white 1c; No. 170 white 1c; No. 171 white 1c; No. 172 white 1c; No. 173 white 1c; No. 174 white 1c; No. 175 white 1c; No. 176 white 1c; No. 177 white 1c; No. 178 white 1c; No. 179 white 1c; No. 180 white 1c; No. 181 white 1c; No. 182 white 1c; No. 183 white 1c; No. 184 white 1c; No. 185 white 1c; No. 186 white 1c; No. 187 white 1c; No. 188 white 1c; No. 189 white 1c; No. 190 white 1c; No. 191 white 1c; No. 192 white 1c; No. 193 white 1c; No. 194 white 1c; No. 195 white 1c; No. 196 white 1c; No. 197 white 1c; No. 198 white 1c; No. 199 white 1c; No. 200 white 1c; No. 201 white 1c; No. 202 white 1c; No. 203 white 1c; No. 204 white 1c; No. 205 white 1c; No. 206 white 1c; No. 207 white 1c; No. 208 white 1c; No. 209 white 1c; No. 210 white 1c; No. 211 white 1c; No. 212 white 1c; No. 213 white 1c; No. 214 white 1c; No. 215 white 1c; No. 216 white 1c; No. 217 white 1c; No. 218 white 1c; No. 219 white 1c; No. 220 white 1c; No. 221 white 1c; No. 222 white 1c; No. 223 white 1c; No. 224 white 1c; No. 225 white 1c; No. 226 white 1c; No. 227 white 1c; No. 228 white 1c; No. 229 white 1c; No. 230 white 1c; No. 231 white 1c; No. 232 white 1c; No. 233 white 1c; No. 234 white 1c; No. 235 white 1c; No. 236 white 1c; No. 237 white 1c; No. 238 white 1c; No. 239 white 1c; No. 240 white 1c; No. 241 white 1c; No. 242 white 1c; No. 243 white 1c; No. 244 white 1c; No. 245 white 1c; No. 246 white 1c; No. 247 white 1c; No. 248 white 1c; No. 249 white 1c; No. 250 white 1c; No. 251 white 1c; No. 252 white 1c; No. 253 white 1c; No. 254 white 1c; No. 255 white 1c; No. 256 white 1c; No. 257 white 1c; No. 258 white 1c; No. 259 white 1c; No. 260 white 1c; No. 261 white 1c; No. 262 white 1c; No. 263 white 1c; No. 264 white 1c; No. 265 white 1c; No. 266 white 1c; No. 267 white 1c; No. 268 white 1c; No. 269 white 1c; No. 270 white 1c; No. 271 white 1c; No. 272 white 1c; No. 273 white 1c; No. 274 white 1c; No. 275 white 1c; No. 276 white 1c; No. 277 white 1c; No. 278 white 1c; No. 279 white 1c; No. 280 white 1c; No. 281 white 1c; No. 282 white 1c; No. 283 white 1c; No. 284 white 1c; No. 285 white 1c; No. 286 white 1c; No. 287 white 1c; No. 288 white 1c; No. 289 white 1c; No. 290 white 1c; No. 291 white 1c; No. 292 white 1c; No. 293 white 1c; No. 294 white 1c; No. 295 white 1c; No. 296 white 1c; No. 297 white 1c; No. 298 white 1c; No. 299 white 1c; No. 300 white 1c; No. 301 white 1c; No. 302 white 1c; No. 303 white 1c; No. 304 white 1c; No. 305 white 1c; No. 306 white 1c; No. 307 white 1c; No. 308 white 1c; No. 309 white 1c; No. 310 white 1c; No. 311 white 1c; No. 312 white 1c; No. 313 white 1c; No. 314 white 1c; No. 315 white 1c; No. 316 white 1c; No. 317 white 1c; No. 318 white 1c; No. 319 white 1c; No. 320 white 1c; No. 321 white 1c; No. 322 white 1c; No. 323 white 1c; No. 324 white 1c; No. 325 white 1c; No. 326 white 1c; No. 327 white 1c; No. 328 white 1c; No. 329 white 1c; No. 330 white 1c; No. 331 white 1c; No. 332 white 1c; No. 333 white 1c; No. 334 white 1c; No. 335 white 1c; No. 336 white 1c; No. 337 white 1c; No. 338 white 1c; No. 339 white 1c; No. 340 white 1c; No. 341 white 1c; No. 342 white 1c; No. 343 white 1c; No. 344 white 1c; No. 345 white 1c; No. 346 white 1c; No. 347 white 1c; No. 348 white 1c; No. 349 white 1c; No. 350 white 1c; No. 351 white 1c; No. 352 white 1c; No. 353 white 1c; No. 354 white 1c; No. 355 white 1c; No. 356 white 1c; No. 357 white 1c; No. 358 white 1c; No. 359 white 1c; No. 360 white 1c; No. 361 white 1c; No. 362 white 1c; No. 363 white 1c; No. 364 white 1c; No. 365 white 1c; No. 366 white 1c; No. 367 white 1c; No. 368 white 1c; No. 369 white 1c; No. 370 white 1c; No. 371 white 1c; No. 372 white 1c; No. 373 white 1c; No. 374 white 1c; No. 375 white 1c; No. 376 white 1c; No. 377 white 1c; No. 378 white 1c; No. 379 white 1c; No. 380 white 1c; No. 381 white 1c; No. 382 white 1c; No. 383 white 1c; No. 384 white 1c; No. 385 white 1c; No. 386 white 1c; No. 387 white 1c; No. 388 white 1c; No. 389 white 1c; No. 390 white 1c; No. 391 white 1c; No. 392 white 1c; No. 393 white 1c; No. 394 white 1c; No. 395 white 1c; No. 396 white 1c; No. 397 white 1c; No. 398 white 1c; No. 399 white 1c; No. 400 white 1c; No. 401 white 1c; No. 402 white 1c; No. 403 white 1c; No. 404 white 1c; No. 405 white 1c; No. 406 white 1c; No. 407 white 1c; No. 408 white 1c; No. 409 white 1c; No. 410 white 1c; No. 411 white 1c; No. 412 white 1c; No. 413 white 1c; No. 414 white 1c; No. 415 white 1c; No. 416 white 1c; No. 417 white 1c; No. 418 white 1c; No. 419 white 1c; No. 420 white 1c; No. 421 white 1c; No. 422 white 1c; No. 423 white 1c; No. 424 white 1c; No. 425 white 1c; No. 426 white 1c; No. 427 white 1c; No. 428 white 1c; No. 429 white 1c; No. 430 white 1c; No. 431 white 1c; No. 432 white 1c; No. 433 white 1c; No. 434 white 1c; No. 435 white 1c; No. 436 white 1c; No. 437 white 1c; No. 438 white 1c; No. 439 white 1c; No. 440 white 1c; No. 441 white 1c; No. 442 white 1c; No. 443 white 1c; No. 444 white 1c; No. 445 white 1c; No. 446 white 1c; No. 447 white 1c; No. 448 white 1c; No. 449 white 1c; No. 450 white 1c; No. 451 white 1c; No. 452 white 1c; No. 453 white 1c; No. 454 white 1c; No. 455 white 1c; No. 456 white 1c; No. 457 white 1c; No. 458 white 1c; No. 459 white 1c; No. 460 white 1c; No. 461 white 1c; No. 462 white 1c; No. 463 white 1c; No. 464 white 1c; No. 465 white 1c; No. 466 white 1c; No. 467 white 1c; No. 468 white 1c; No. 469 white 1c; No. 470 white 1c; No. 471 white 1c; No. 472 white 1c; No. 473 white 1c; No. 474 white 1c; No. 475 white 1c; No. 476 white 1c; No. 477 white 1c; No. 478 white 1c; No. 479 white 1c; No. 480 white 1c; No. 481 white 1c; No. 482 white 1c; No. 483 white 1c; No. 484 white 1c; No. 485 white 1c; No. 486 white 1c; No. 487 white 1c; No. 488 white 1c; No. 489 white 1c; No. 490 white 1c; No. 491 white 1c; No. 492 white 1c; No. 493 white 1c; No. 494 white 1c; No. 495 white 1c; No. 496 white 1c; No. 497 white 1c; No. 498 white 1c; No. 499 white 1c; No. 500 white 1c; No. 501 white 1c; No. 502 white 1c; No. 503 white 1c; No. 504 white 1c; No. 505 white 1c; No. 506 white 1c; No. 507 white 1c; No. 508 white 1c; No. 509 white 1c; No. 510 white 1c; No. 511 white 1c; No. 512 white 1c; No. 513 white 1c; No. 514 white 1c; No. 515 white 1c; No. 516 white 1c; No. 517 white 1c; No. 518 white 1c; No. 519 white 1c; No. 520 white 1c; No. 521 white 1c; No. 522 white 1c; No. 523 white 1c; No. 524 white 1c; No. 525 white 1c; No. 526 white 1c; No. 527 white 1c; No. 528 white 1c; No. 529 white 1c; No. 530 white 1c; No. 531 white 1c; No. 532 white 1c; No. 533 white 1c; No. 534 white 1c; No. 535 white 1c; No. 536 white 1c; No. 537 white 1c; No. 538 white 1c; No. 539 white 1c; No. 540 white 1c; No. 541 white 1c; No. 542 white 1c; No. 543 white 1c; No. 544 white 1c; No. 545 white 1c; No. 546 white 1c; No. 547 white 1c; No. 548 white 1c; No. 549 white 1c; No. 550 white 1c; No. 551 white 1c; No. 552 white 1c; No. 553 white 1c; No. 554 white 1c; No. 555 white 1c; No. 556 white 1c; No. 557 white 1c; No. 558 white 1c; No. 559 white 1c; No. 560 white 1c; No. 561 white 1c; No. 562 white 1c; No. 563 white 1c; No. 564 white 1c; No. 565 white 1c; No. 566 white 1c; No. 567 white 1c; No. 568 white 1c; No. 569 white 1c; No. 570 white 1c; No. 571 white 1c; No. 572 white 1c; No. 573 white 1c; No. 574 white 1c; No. 575 white 1c; No. 576 white 1c; No. 577 white 1c; No. 578 white 1c; No. 579 white 1c; No. 580 white 1c; No. 581 white 1c; No. 582 white 1c; No. 583 white 1c; No. 584 white 1c; No. 585 white 1c; No. 586 white 1c; No. 587 white 1c; No. 588 white 1c; No. 589 white 1c; No. 590 white 1c; No. 591 white 1c; No. 592 white 1c; No. 593 white 1c; No. 594 white 1c; No. 595 white 1c; No. 596 white 1c; No. 597 white 1c; No. 598 white 1c; No. 599 white 1c; No. 600 white 1c; No. 601 white 1c; No. 602 white 1c; No. 603 white 1c; No. 604 white 1c; No. 605 white 1c; No. 606 white 1c; No. 607 white 1c; No. 608 white 1c; No. 609 white 1c; No. 610 white 1c; No. 611 white 1c; No. 612 white 1c; No. 613 white 1c; No. 614 white 1c; No. 615 white 1c; No. 616 white 1c; No. 617 white 1c; No. 618 white 1c; No. 619 white 1c; No. 620 white 1c; No. 621 white 1c; No. 622 white 1c; No. 623 white 1c; No. 624 white 1c; No. 625 white 1c; No. 626 white 1c; No. 627 white 1c; No. 628 white 1c; No. 629 white 1c; No. 630 white 1c; No. 631 white 1c; No. 632 white 1c; No. 633 white 1c; No. 634 white 1c; No. 635 white 1c; No. 636 white 1c; No. 637 white 1c; No. 638 white 1c; No. 639 white 1c; No. 640 white 1c; No. 641 white 1c; No. 642 white 1c; No. 643 white 1c; No. 644 white 1c; No. 645 white 1c; No. 646 white 1c; No. 647 white 1c; No. 648 white 1c; No. 649 white 1c; No. 650 white 1c; No. 651 white 1c; No. 652 white 1c; No. 653 white 1c; No. 654 white 1c; No. 655 white 1c; No. 656 white 1c; No. 657 white 1c; No. 658 white 1c; No. 659 white 1c; No. 660 white 1c; No. 661 white 1c; No. 662 white 1c; No. 663 white 1c; No. 664 white 1c; No. 665 white 1c; No. 666 white 1c; No. 667 white 1c; No. 668 white 1c; No. 669 white 1c; No. 670 white 1c; No. 671 white 1c; No. 672 white 1c; No. 673 white 1c; No. 674 white 1c; No. 675 white 1c; No. 676 white 1c; No. 677 white 1c; No. 678 white 1c; No. 679 white 1c; No. 680 white 1c; No. 681 white 1c; No. 682 white 1c; No. 683 white 1c; No. 684 white 1c; No. 685 white 1c; No. 686 white 1c; No. 687 white 1c; No. 688 white 1c; No. 689 white 1c; No. 690 white 1c; No. 691 white 1c; No. 692 white 1c; No. 693 white 1c; No. 694 white 1c; No. 695 white 1c; No. 696 white 1c; No. 697 white 1c; No. 698 white 1c; No. 699 white 1c; No. 700 white 1c; No. 701 white 1c; No. 702 white 1c; No. 703 white 1c; No. 704 white 1c; No. 705 white 1c; No. 706 white 1c; No. 707 white 1c; No. 708 white 1c; No. 709 white 1c; No. 710 white 1c; No. 711 white 1c; No. 712 white 1c; No. 713 white 1c; No. 714 white 1c; No. 715 white 1c; No. 716 white 1c; No. 717 white 1c; No. 718 white 1c; No. 719 white 1c; No. 720 white 1c; No. 721 white 1c; No. 722 white 1c; No. 723 white 1c; No. 724 white 1c; No. 725 white 1c; No. 726 white 1c; No. 727 white 1c; No. 728 white 1c; No. 729 white 1c; No. 730 white 1c; No. 731 white 1c; No. 732 white 1c; No. 733 white 1c; No. 734 white 1c; No. 735 white 1c; No. 736 white 1c; No. 737 white 1c; No. 738 white 1c; No. 739 white 1c; No. 740 white 1c; No. 741 white 1c; No. 742 white 1c; No. 743 white 1c; No. 744 white 1c; No. 745 white 1c; No. 746 white 1c; No. 747 white