

STRONG HIGH SCHOOL TEAMS PLAY SATURDAY

One of the outstanding interschool football clashes of the year will take place on Sweetland field Saturday night at 8 o'clock when the Lava Bears of Bend high school clash with Coach Huntington's Salem high warriors. The game will make the second meeting on the gridiron in as many years of the two squads, Bend having won the first one last season.

Bend, with a record of having won three games this season—defeating Burns, Redmond and Prineville on successive Saturdays—is reported as having a strong pass offense as well as a running attack which is hard to stop. Both teams will be well supplied with lettermen—Bend having at least eight in its line-up while Coach Huntington plans to start 10 players who have already won their laurels.

Word from across this Cascade range indicates Coach Cochran has developed a passing combination in Cundell, fullback and Strom, halfback, which functions well. However, it is indicated the aerial attack may not be unleashed if the running plays prove sufficient.

Coach Huntington during the week has been forced to make a change in the makeup of his line. Grabenhorst, probably the fastest lineman of the entire squad, has been shifted to the guard position formerly held by Hobbs. He has had little experience at this post but is expected to make a good showing nevertheless. The balance of the line will consist of Engel and Coons ends, Moody and Drago tackles, Yada guard, and Halverson center. Capable reserves include Doerfler and Saunders, ends, Hastings, guard, and Burrell center.

Knight, Nicholson, Wintermute and Sherrill will start in the backfield. All are lettermen with the exception of Sherrill. Hauser, Salstrom, Anderson and McLoughlin are the most likely reserves. Nicholson and Wintermute are still nursing injuries. Knight has shown a great deal of improvement this season, especially in his blocking.

Prices for the game have been fixed at an extremely low level.

Two football games which will have an important bearing on the Northwest conference championship will be played this week end—Willamette vs. College of Puget Sound at Tacoma tonight and Pacific university vs. Linfield college at McMinnville. While the losing of either contest by any one of the four teams involved does not mean the elimination from further conference honors consideration, yet it will mean a serious blow to championship aspirations. While, naturally the interest of Salem fans will be centered in the Tacoma mix where Willamette will be meeting the 1932 champions, nevertheless the struggle at McMinnville Saturday afternoon is an important one. Coach Lever has one of the strongest aggregations in the history of Linfield college due to the instance of an unusually large number of scholarships to freshmen. The Wildcats do not deny they are out to make a record this year and while they were edged out by Whitman, 7 to 6 a couple of weeks ago, they do not consider themselves out of the running. A win over Pacific would put them right back in the limelight. On the other hand a loss to the Badgers means virtual elimination from any hope of winning the conference pennant. Coach Cornell at Pacific got off to a good start by defeating Columbia. Later, however, the Badgers took a beating at the hands of Southern Oregon normal.

The Bearcat-Logger contest is likely to be a horse race. Both squads have big lines and experienced backfields. The Loggers appear to hold the edge in the matter of reserves. With George Cannady unable to play more than a quarter,

Skits and Scratches

Two football games which will have an important bearing on the Northwest conference championship will be played this week end—Willamette vs. College of Puget Sound at Tacoma tonight and Pacific university vs. Linfield college at McMinnville. While the losing of either contest by any one of the four teams involved does not mean the elimination from further conference honors consideration, yet it will mean a serious blow to championship aspirations. While, naturally the interest of Salem fans will be centered in the Tacoma mix where Willamette will be meeting the 1932 champions, nevertheless the struggle at McMinnville Saturday afternoon is an important one. Coach Lever has one of the strongest aggregations in the history of Linfield college due to the instance of an unusually large number of scholarships to freshmen. The Wildcats do not deny they are out to make a record this year and while they were edged out by Whitman, 7 to 6 a couple of weeks ago, they do not consider themselves out of the running. A win over Pacific would put them right back in the limelight. On the other hand a loss to the Badgers means virtual elimination from any hope of winning the conference pennant. Coach Cornell at Pacific got off to a good start by defeating Columbia. Later, however, the Badgers took a beating at the hands of Southern Oregon normal.

The Bearcat-Logger contest is likely to be a horse race. Both squads have big lines and experienced backfields. The Loggers appear to hold the edge in the matter of reserves. With George Cannady unable to play more than a quarter,

HUSKIES MEET TRADITIONAL FOE IN WEBFOOTERS



The mythical championship of northern members of the Pacific Coast Football conference will be settled Oct. 14 when Coach "Prink" Callison's Oregon eleven meets Coach Jimmy Phelan's Washington squad in Seattle. Gee is a lightning fast halfback while Sulkosky is a line plunging specialist. Wishard and Smith are two good ends. (Associated Press Photos)

Coach Keene will be hard pressed if another of his ball carriers or blockers should be forced to leave tonight's game through injuries, since experienced men back of the line are scarce at Willamette. Although Coach Larry Wolfe at Oregon Normal gets credit for possessing all of the tricks in the game, Roy Sandberg, Logger mentor delights in pulling a "fast one" on his opponents. The unexpected may be looked for at Tacoma tonight. It would not be surprising, however, if the game should result in a scoreless deadlock—a repetition of last year's struggle on Sweetland field.

Whitworth college, Spokane, one of the smaller schools of the northwest, is knocking at the Northwest conference entrance door. After several years of comparative inactivity the institution is trying to break into faster competition with Coach Snowy Gustafson at the helm. Whitworth will play Whitman at Walla Walla Saturday afternoon. The admission of Whitworth to the Northwest fold might be a good idea since it would permit of more competition in the eastern division, now represented by Whitman and College of Idaho.

Saturday night's game under the lights of Sweetland field between Salem and Bend high schools should be a good one. Both teams are well coached and play intelligent football. It will mark the re-appearance of Jimmy Nicholson in the Salem backfield after an absence of a year. He will be playing safety Saturday night and those who have watched the team in recent workouts are looking for some real thrills when he grabs the pigskin and starts a gallop up the field. He will be ably assisted by Wintermute, Knight, Salstrom, Anderson, Sherrill and others.

MATCHES ARRANGED WOODBURN TOURNAY

Woodburn—The first 18 holes of qualifying play on the Woodburn golf course have resulted in the following matches for the quarter finals: Championship flight: Painter vs. Shorey, DeJardine vs. Hughes, Beechler vs. McAllister, Guiss vs. Hunt. First flight: Smolinsky vs. Glass, Hoefler vs. Wright, Scollard vs. Walsh, Hershberger vs. Smith. Second flight: Battle vs. Proctor, Mahony vs. Harper, Lestard vs. Austin, McCord vs. Shaw. Third flight: Beck vs. Miller, Myers vs. Lee.

Rules have been posted for the women's fall tournament signed by the committee, Mary Scollard, Edith McCord and Myrtle Smith. There will also be a boys' tournament with the same rules governing.

Hopmore—Mrs. D. M. Keene has been ill for the past few days. Mr. and Mrs. Charles Russell Jr., and family were dinner guests at the Keene home Sunday.

Webfoots - Huskies Attract Spotlight In Struggle At Seattle

San Francisco, Oct. 13 (AP)—Swinging in the space of a week from the far south to the extreme north, the Pacific coast conference football spotlight will focus tomorrow on Seattle, where the rival Universities of Washington and Oregon tangle on the former's home field.

Aside from this headline between two outstanding aspirants for coast gridiron honors, only one conference clash is scheduled for this week-end, that at Pullman, Wash., between the University of Montana and Washington State college. Five other member elevens will meet outside teams, while the Bruins of the University of California at Los Angeles have an open date.

Coach Jimmy Phelan's Washington squad will be battling against one of those persistent football "jinxes" when it takes the field against Oregon's Webfoot. In five years the Huskies have failed to register a single score against their opponents of the Oregon school. Oregon has won four of the contests, while last year's game ended in a scoreless tie.

In the face of such circumstances, tomorrow's tussle can be rated as nothing but a toss-up, although the Washington eleven is hailed as the potentially strongest in years and looks the more powerful of the two in an early season lineup.

Orin Hollingsbery's Washington State Cougars, pushed into the background of the conference picture by their 33 to 0 defeat at the hands of the University of Southern

MONMOUTH NORMAL PLAY SONS FRIDAY

Monmouth—On Friday evening, October 13 the Wolves will journey to Portland to meet the Sons of Ashland. In last year's contest of the two squads, the teachers scored 20 to 6.

The remaining games scheduled at this time will be played in Monmouth on Butler field as follows: Friday, October 20, St. Martin's college team from Washington; Saturday, November 4, Chico State Teachers college; November 24, Albany college. The game of November 4 marks the teachers' annual homecoming game.

Egg Hurling Lad Haled Into Court By Wrathful Father

Albany, Ore. — DeLeon Elmore, Brownsville, was arrested yesterday at Brownsville and haled in justice court charged with throwing an egg at Lena Wirth, who was attending a meeting in the Brownsville high school October 8. John Wirth, father of the girl, signed the warrant against Elmore.

Justice of the Peace Victor Ollifer stated today that Elmore pleaded not guilty and that the trial date was set for Friday afternoon in justice court.

It is alleged that Elmore threw the egg through a window of the high school building, the contents of the egg spilling on Miss Wirth. The complaint failed to state the age of the egg.

OFFICIALS ACT TO ELIMINATE GRID INJURIES

New York, Oct. 13 (AP)—Alarmed by the mounting number of deaths from football injuries, mostly in the high school ranks, authorities of the game redoubled their efforts today to bring about closer supervision, better medical attention and a closer study of the rules.

Coinciding with an Associated Press survey which revealed 14 deaths attributed directly or indirectly to football already this season as compared with 12 at the same time a year ago, Major John L. Griffiths, athletic commissioner of the western conference and president of the National Collegiate A. A. and Dan E. McGugin of Vanderbilt, president of the American Football Coaches' association, indicated these organizations were continuing their efforts to solve the problem.

Griffiths said an investigation by the N.C.A.A. had shown that lack of supervision, ignorance of the rules and poor medical attention were responsible for a majority of the deaths and that an educational campaign to "eliminate these faults" was being conducted.

McGugin, agreeing with these views, said "nothing should be left undone in studying the cause of injuries and their elimination by coaches, rule makers and others."

Of the 14 deaths so far reported, only one occurred in college ranks and only three involved sandlot players. The other ten victims all were high school students, an increase of four over the comparative figures for last year.

BANANA ACREAGE FOR VALLEY SOIL

Silverton—Mr. and Mrs. Warren E. Crabtree have recently traded a banana, pineapple and orange property acreage in the American Colony in Old Mexico, in the Valley of Paradise, for a five acre tract just south of Salem on the Pacific highway. The Salem ranch is bearing prunes, logan berries, cherries, apples and pears.

Crabtree's parents have lived in the American Colony for eleven years. His father, P. E. Crabtree, retired from the professorship of agricultural economics and farm management of Kansas State Agricultural college, and previously, was agricultural lecturer of the Missouri

BEARCATS OFF FOR BIG GAME

Prepared to give the Loggers of Puget Sound all they have in their bag of football plays, gridiron warriors of Willamette university, accompanied by Coach Keene, Leslie Sparks, graduate manager and others left by train early this morning for Tacoma. The game will take place tonight on Stadium field beginning at 8 o'clock. The player list included Balkovic, Brandon, Cannady, Clark, Connors, Frantz, Granis, Gribble, Kaiser, McAdam, McKerrow, Mills, Newhouse, Olson, Oravec, Peteyes, Rhoda, Stone, Tweed, Vagt, Versteeg, Gordon Williams, and "Bronc" Williams. This list includes six ends.

A party of close to 50 students left around noon by motor.

According to arrangements announced the game will be broadcast over radio station KVI, Tacoma.

SOCIAL IS FRIDAY

West Salem—There will be a social meeting of the West Salem P. T. A. at the school house Friday afternoon at 3 o'clock. There will be program numbers and refreshments. Teachers and patrons are urged to be in attendance.

Sidney—W. H. Scott, who has been in poor health the past year, was suddenly taken worse Sunday morning.

Christian Gridmen Sentence Suspended

Fort Worth, Texas, Oct. 13 (AP)—Friday, the thirteenth, didn't prove a hoodoo for the Texas Christian university football team after all. A score of upperclassmen, half of them members of the varsity football squad, defending Southwest conference champions, were suspended from the university for hazing but the "sentence" was suspended pending good behavior.

WAHLMER INJURED
Silverton—Webb Wahlmer received minor injuries while at work in the shop of the Eastern-Western Logging company at Molalla Tuesday. He was able to return to his duties Thursday. He lives here.

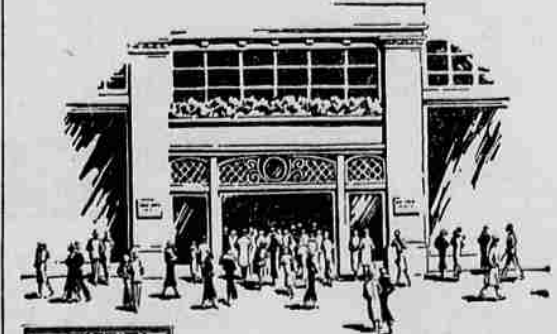
MOVE FROM HOPMERE
Hopmore—Mr. and Mrs. Cal Ashbaugh and children, Chester, Stanley, Victor and Deloris, who lived all summer on the former Pierre Asplivall place, have moved to Falls City where he will again be engaged in farming.

STEADY CENTER OF OREGON STATE



Vic Curtin is center of the Oregon State football team. (Associated Press Photos)

Both are Main Entrances



MERCHANTS believe in keeping their store doors wide open to customers. The telephone, too, is a customer's "doorway" of importance. It should swing open readily. The store should have enough main lines and enough extensions to receive business by telephone easily and without delay.

THE PACIFIC TELEPHONE AND TELEGRAPH COMPANY
Business Office 740 State St. Phone 3101

BARGAIN

Capital Journal

Salem's Leading Newspaper

TODAY'S NEWS TODAY

ONE FULL YEAR

\$ 3

Less Than One Cent Per Copy

BY MAIL ONLY!

In Marion, Polk, Linn, Yamhill, Benton and Clackamas counties

Bargain Period to Oct. 31st.

The Capital Journal is a Live, Fearless, Independent Newspaper. Its Market Page and Valley News are the Best in the State. Features "News Behind the News," Andy Gump, Mutt and Jeff, Little Orphan Annie, Reg'lar Fellers, Tailspin Tommy, Special Feature Writers, Continued Story each evening, Cross Word Puzzles, and Many Other Features. The Capital Journal is the only newspaper in Salem carrying full Associated and United Press leased wire dispatches, giving you all the news when it is news, together with an Information Bureau maintained at Washington, D. C., especially for Capital Journal subscribers.

This Offer Is Good for Old as Well as New Subscribers