

PORTLAND BUTTER MARKET IS STRONGER

Cold Likely To Increase Egg Values

Portland, Ore. (AP)—Strengthening of the undertone of the butter market is indicated. The market Monday is a weather affair and the immediate future of values will depend almost exclusively upon climatic conditions.

During the last few days there has been more or less inclination to hold the market's position although little change is noted in quotations at any point.

Locally the market appears more or less inclined to steady in sympathy with climatic conditions. There has as yet been no material change in the output but the present week is expected to show some decrease.

While in spots it looks like a stiffening egg market values due to the cold weather, so many prices are ruling that it is impossible to say what the established values would be. Re-sales are actually confirmed below what the exchange is quoting.

Despite the talk of increasing supplies and plenty of stock to take care of needs it is noted that killers are still scrambling for live chicken supplies along the wholesale way. Prices are firmly held.

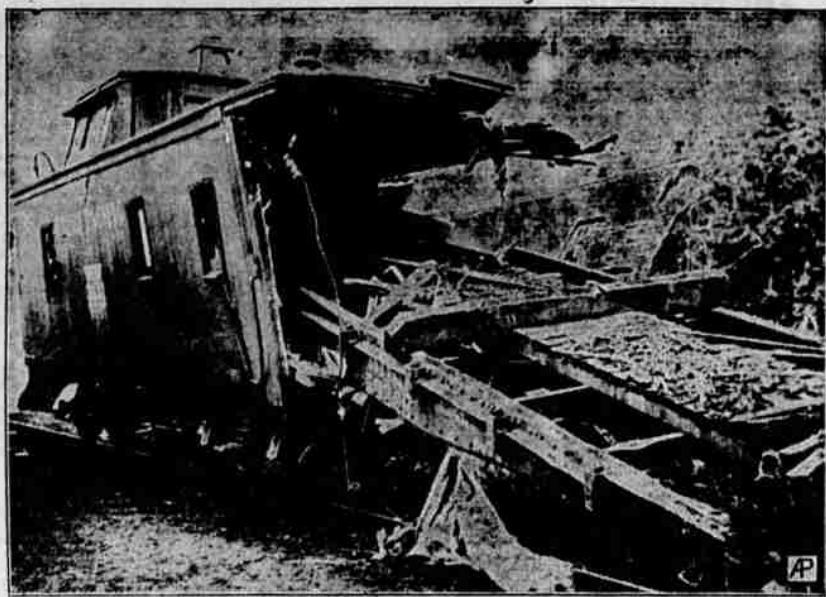
While there has been more or less talk of too many turkeys to take care of and a generally easier undertone, efforts to secure some of these bargains have failed.

Market for country killed hogs and calves shows at least a steady tone along the wholesale way. Late receipts have shown a decrease on account of the condition of the market roads.

Shortage of lambs is still pronounced here with extreme prices generally continued. Present supply appears inadequate to take care of more than a small per cent of the daily needs.

Owing to the freezing rivers, it was practically impossible to secure offerings of Columbia river smelt here.

ABERDEEN LOGGING TRAIN CRASH FATAL TO TWO



A conductor and car repair man were killed when a string of cars and a freight engine telescoped on a siding near Aberdeen, Wash.

TODAY'S MARKET QUOTATIONS

PORTLAND LIVESTOCK
 Portland, Ore. (AP)—Cattle and calves slow, fairly steady; receipts 2240.
 Steers 1100 to 1300 lbs., good \$11 to \$11.75; do 850 to 1100 lbs., good \$11 to \$11.25; do 600 lbs. and up, medium \$10 to \$11; do common, \$8.50 to \$10.75; do 400 lbs. and up, medium \$10.25 to \$10.75; do common \$8.25 to \$10.25; cows, good \$9 to \$9.50; cows, common to medium \$7 to \$8; yearlings, good \$7.25 to \$8; bulls, cutler to medium \$6.50 to \$7; calves, 500 lbs. and up, medium to choice \$8 to \$11; calves cut to common, \$7.50 to \$9; vealers, milk \$10 to \$12; choice \$12 to \$14.25; medium \$11.50 to \$13; cull to common \$8.50 to \$11.50.

Hogs: Active, killing classes most by 25 cents higher; receipts 2130.
 Heavyweight, 250 to 350 lbs., medium to choice, \$7.75 to \$9.25; medium weight, 200 to 250 lbs., medium to choice \$8.50 to \$9.25; light weight, 150 to 200 lbs., medium to choice \$8.75 to \$9.25; packing, rough and smooth, \$7 to \$8; slaughter pigs, 90 to 120 lbs., medium to choice \$8 to \$9; feeder and stocker pigs, 70 to 120 lbs., medium to choice \$8 to \$9; light weight, 50 to 75 lbs., medium to choice \$8 to \$9; all weights, cull to common, \$2 to \$3.50.

PORTLAND WHEAT
 Portland, Ore. (AP)—Wheat: Big Bend bluestem, hard white \$1.52; soft white \$1.19; western white \$1.19; western red \$1.16.
 Oats No. 2, 38 lb., white \$38.00.
 Car receipts: Wheat 57, barley 10; flour 11; corn 12; oats 1 and hay 10.

CHICAGO GRAIN
 Chicago (AP)—Favorable foreign news caused wheat to advance sharply at the close here today. Selling by the northwest prevented gains early. Corn was higher with the advance at Buenos Aires in spite of large receipts. Data closed firm.
 At the close wheat was 1 1/2c to 1 3/4c higher, corn was up 1/4c to 3/4c and oats 1/4c to 1/2c higher. Provisions were unchanged.
 Liverpool was higher in the face of large arrivals of wheat from exporting countries and this contributed to the firm tone here during the morning. The northwest did some selling, and there was considerable profit-taking, but the market found good support.
 Receipts of corn were the largest in some time but their depressing effect was offset by reports from Argentina.
 Oats showed very little change most of the day. Trading was only moderately active.
 Cash markets were: Wheat unchanged; corn to 1/4 cent higher and oats unchanged.
 Receipts: Wheat 33 cars; corn 767 cars and oats 80.

PORTLAND PRODUCE
 Portland, Ore. (AP)—Butter: Cube extra 44c; standards 43 1/2c; prime firsts 42c.
 Eggs: Fresh standard extras 35c; fresh standard firsts 34c; fresh medium extra 32c; fresh medium firsts, 30c.
 Butterfat—Direct shippers' track price: No. 1, 46c; No. 2, 43c; No. 3, 40c.
 Portland delivery prices: No. 1 butterfat 48c to 49c; No. 2 butterfat 43c to 44c; No. 3 butterfat 38c to 39c.
 Milk—Buying price four percent \$2.75 cental.
 Cheese—Selling price to retailers: Tillamook county 2nd grade, local 30c; Tillamook f. o. b. selling price: Triplets 27c; loaf 28c.
 Live poultry—Hens over 4 1/2 pounds 25c; 3 1/2 pounds and up 22c; over 3 1/2 pounds 18c; springs 21c; old roosters 12c; Pekin ducks, 20c; colored 18c to 20c; young geese 18c; turkeys 22c to 25c.
 Dressed poultry—Nominal No. 1 turkeys 33c to 35c; No. 2 turkeys, 20c to 25c; ovens 20c.
 Fruits—Oranges navelis \$2 to \$2.75; fruit, 40c to \$2.00; lemons \$2.50 to \$3 a case; bananas 7c to 7 1/2c pound.
 Cucumbers—Local hot house \$2 to \$4 dozen.
 Tomatoes—Local hot house, extra fancy \$4.75; No. 2 \$2.25 crate, Mexican \$3 to \$3.50 per lug.
 Cranberries—Fancy local \$7 bushel; do, farmers \$2 to \$2.50 barrel.
 Nuts—Selling price to retailers: Onions—Selling price to retailers: Oregon fancy \$4.25 to \$5.25; garlic 30 to 35 cents pound.

Sack vegetables—Selling price: Lettuce, Oregon \$1.50; California \$2.50 to \$3.50 crate. Celery 90c to \$1; hearts \$1.75 dozen; spinach local \$1.50 to \$1.65 crate; California \$2.50 to \$2.75 crate; cabbage local \$1.50 to \$1.75; California 4 1/2c to 5c pound.
 Sweet potatoes—Yakima \$1 to \$1.20 cwt.; Deschutes \$1.50 to \$1.75; western Oregon \$1 to \$1.25 sack.
 Sweet potatoes—California, crates 5c to 6 1/2c pound; southern \$2.75 to \$3 hamper.
 Country meats: Selling price to retailers: Country killed hogs, best butchers under 150 pounds 12 1/2c to 13c; veal, 75 to 90 pounds, 18c to 20c; lambs 22 to 25c.

CASCARA BARK
 Portland, Ore. (AP)—Cascara bark, steady; 7c per pound; Oregon grape root 7c to 4c.

NUTS, HOPS AND WOOL
 Portland, Ore. (AP)—Nuts, Oregon walnuts 27c to 28c; California 23c to 26c; peanuts, raw, 13c to 14c; Brazil, new crop 23c to 24c; almonds 21 1/2c to 22 1/2c; filberts 18c to 20c per pound; pecans 24c to 25c.
 Hops—Nominal, 18 1/2c to 19c pound.
 Wool—1928, crop nominal. Williams-ette valley, 30c to 40c pound; eastern Oregon, 30c to 36c pound.

HAY MARKET
 Portland, Ore. (AP)—Hay, steady; buying prices: Eastern Oregon timothy \$21.50 to \$22; Turkey \$17 to \$17.50; alfalfa \$22.50 to \$23; oat hay \$18 to \$18.50; clover \$17 to \$17.50; straw \$8 per ton; selling prices \$2 per ton more.

BUTTERFAT
 San Francisco (AP)—Butterfat f. o. b. San Francisco, 50c.

SAN FRANCISCO FRUIT
 San Francisco (AP)—(Federal-State Market News Service)—Apples: Calif. Newtown Pippin \$1 1/2 to 1 1/4; do 1 1/2 to 1 1/4; cold storage, 4 tier \$1.40 to \$1.55; 3 1/2 tier \$1.75 to \$2 1/4; tier \$1.50 to \$1.75; Lady Apples, Tidwell dist. \$1.35 to \$1.50; fancy \$2.50 to \$2.75; Pippinville, C grade \$1.50 to \$2. Washington Winesap \$2.25 to \$2.50; fancy \$1.90 to \$2.25. Some Beauties fancy, large \$1.75 to \$2; small to medium \$1.50 to \$1.75.
 Oregon Newtown Pippin \$2.25 to \$2.50; Spitzbergen, \$1.75 to \$2.25; Pippinville, \$1.50 to \$1.75.
 Peaches, lake country, packed Winter Nels \$2.75; per box, \$4.50; size \$2 to \$2.50. Oregon d'Anjou \$3.50 to \$4.00. Calif. d'Anjou, fair quality, \$1.75 to \$2.25 per box. Rose \$1.40 to \$1.65.

SAN FRANCISCO POULTRY
 San Francisco (AP)—(U. S. Bureau Agricultural Economics)—Hens: Leg-horn under 2 1/2 lbs. 23c to 25c; \$2 1/2 to 3c; over 3 lbs. 30-32c. Broilers: 3 1/2 to 4 1/2 lbs. 25c to 30c; 4 1/2 to 5 1/2 lbs. 30c to 35c; 5 1/2 to 6 1/2 lbs. 35c to 40c; 6 1/2 to 7 1/2 lbs. 40c to 45c; 7 1/2 to 8 1/2 lbs. 45c to 50c; 8 1/2 to 9 1/2 lbs. 50c to 55c; 9 1/2 to 10 1/2 lbs. 55c to 60c; 10 1/2 to 11 1/2 lbs. 60c to 65c; 11 1/2 to 12 1/2 lbs. 65c to 70c; 12 1/2 to 13 1/2 lbs. 70c to 75c; 13 1/2 to 14 1/2 lbs. 75c to 80c; 14 1/2 to 15 1/2 lbs. 80c to 85c; 15 1/2 to 16 1/2 lbs. 85c to 90c; 16 1/2 to 17 1/2 lbs. 90c to 95c; 17 1/2 to 18 1/2 lbs. 95c to 100c; 18 1/2 to 19 1/2 lbs. 100c to 105c; 19 1/2 to 20 1/2 lbs. 105c to 110c; 20 1/2 to 21 1/2 lbs. 110c to 115c; 21 1/2 to 22 1/2 lbs. 115c to 120c; 22 1/2 to 23 1/2 lbs. 120c to 125c; 23 1/2 to 24 1/2 lbs. 125c to 130c; 24 1/2 to 25 1/2 lbs. 130c to 135c; 25 1/2 to 26 1/2 lbs. 135c to 140c; 26 1/2 to 27 1/2 lbs. 140c to 145c; 27 1/2 to 28 1/2 lbs. 145c to 150c; 28 1/2 to 29 1/2 lbs. 150c to 155c; 29 1/2 to 30 1/2 lbs. 155c to 160c; 30 1/2 to 31 1/2 lbs. 160c to 165c; 31 1/2 to 32 1/2 lbs. 165c to 170c; 32 1/2 to 33 1/2 lbs. 170c to 175c; 33 1/2 to 34 1/2 lbs. 175c to 180c; 34 1/2 to 35 1/2 lbs. 180c to 185c; 35 1/2 to 36 1/2 lbs. 185c to 190c; 36 1/2 to 37 1/2 lbs. 190c to 195c; 37 1/2 to 38 1/2 lbs. 195c to 200c; 38 1/2 to 39 1/2 lbs. 200c to 205c; 39 1/2 to 40 1/2 lbs. 205c to 210c; 40 1/2 to 41 1/2 lbs. 210c to 215c; 41 1/2 to 42 1/2 lbs. 215c to 220c; 42 1/2 to 43 1/2 lbs. 220c to 225c; 43 1/2 to 44 1/2 lbs. 225c to 230c; 44 1/2 to 45 1/2 lbs. 230c to 235c; 45 1/2 to 46 1/2 lbs. 235c to 240c; 46 1/2 to 47 1/2 lbs. 240c to 245c; 47 1/2 to 48 1/2 lbs. 245c to 250c; 48 1/2 to 49 1/2 lbs. 250c to 255c; 49 1/2 to 50 1/2 lbs. 255c to 260c; 50 1/2 to 51 1/2 lbs. 260c to 265c; 51 1/2 to 52 1/2 lbs. 265c to 270c; 52 1/2 to 53 1/2 lbs. 270c to 275c; 53 1/2 to 54 1/2 lbs. 275c to 280c; 54 1/2 to 55 1/2 lbs. 280c to 285c; 55 1/2 to 56 1/2 lbs. 285c to 290c; 56 1/2 to 57 1/2 lbs. 290c to 295c; 57 1/2 to 58 1/2 lbs. 295c to 300c; 58 1/2 to 59 1/2 lbs. 300c to 305c; 59 1/2 to 60 1/2 lbs. 305c to 310c; 60 1/2 to 61 1/2 lbs. 310c to 315c; 61 1/2 to 62 1/2 lbs. 315c to 320c; 62 1/2 to 63 1/2 lbs. 320c to 325c; 63 1/2 to 64 1/2 lbs. 325c to 330c; 64 1/2 to 65 1/2 lbs. 330c to 335c; 65 1/2 to 66 1/2 lbs. 335c to 340c; 66 1/2 to 67 1/2 lbs. 340c to 345c; 67 1/2 to 68 1/2 lbs. 345c to 350c; 68 1/2 to 69 1/2 lbs. 350c to 355c; 69 1/2 to 70 1/2 lbs. 355c to 360c; 70 1/2 to 71 1/2 lbs. 360c to 365c; 71 1/2 to 72 1/2 lbs. 365c to 370c; 72 1/2 to 73 1/2 lbs. 370c to 375c; 73 1/2 to 74 1/2 lbs. 375c to 380c; 74 1/2 to 75 1/2 lbs. 380c to 385c; 75 1/2 to 76 1/2 lbs. 385c to 390c; 76 1/2 to 77 1/2 lbs. 390c to 395c; 77 1/2 to 78 1/2 lbs. 395c to 400c; 78 1/2 to 79 1/2 lbs. 400c to 405c; 79 1/2 to 80 1/2 lbs. 405c to 410c; 80 1/2 to 81 1/2 lbs. 410c to 415c; 81 1/2 to 82 1/2 lbs. 415c to 420c; 82 1/2 to 83 1/2 lbs. 420c to 425c; 83 1/2 to 84 1/2 lbs. 425c to 430c; 84 1/2 to 85 1/2 lbs. 430c to 435c; 85 1/2 to 86 1/2 lbs. 435c to 440c; 86 1/2 to 87 1/2 lbs. 440c to 445c; 87 1/2 to 88 1/2 lbs. 445c to 450c; 88 1/2 to 89 1/2 lbs. 450c to 455c; 89 1/2 to 90 1/2 lbs. 455c to 460c; 90 1/2 to 91 1/2 lbs. 460c to 465c; 91 1/2 to 92 1/2 lbs. 465c to 470c; 92 1/2 to 93 1/2 lbs. 470c to 475c; 93 1/2 to 94 1/2 lbs. 475c to 480c; 94 1/2 to 95 1/2 lbs. 480c to 485c; 95 1/2 to 96 1/2 lbs. 485c to 490c; 96 1/2 to 97 1/2 lbs. 490c to 495c; 97 1/2 to 98 1/2 lbs. 495c to 500c; 98 1/2 to 99 1/2 lbs. 500c to 505c; 99 1/2 to 100 1/2 lbs. 505c to 510c; 100 1/2 to 101 1/2 lbs. 510c to 515c; 101 1/2 to 102 1/2 lbs. 515c to 520c; 102 1/2 to 103 1/2 lbs. 520c to 525c; 103 1/2 to 104 1/2 lbs. 525c to 530c; 104 1/2 to 105 1/2 lbs. 530c to 535c; 105 1/2 to 106 1/2 lbs. 535c to 540c; 106 1/2 to 107 1/2 lbs. 540c to 545c; 107 1/2 to 108 1/2 lbs. 545c to 550c; 108 1/2 to 109 1/2 lbs. 550c to 555c; 109 1/2 to 110 1/2 lbs. 555c to 560c; 110 1/2 to 111 1/2 lbs. 560c to 565c; 111 1/2 to 112 1/2 lbs. 565c to 570c; 112 1/2 to 113 1/2 lbs. 570c to 575c; 113 1/2 to 114 1/2 lbs. 575c to 580c; 114 1/2 to 115 1/2 lbs. 580c to 585c; 115 1/2 to 116 1/2 lbs. 585c to 590c; 116 1/2 to 117 1/2 lbs. 590c to 595c; 117 1/2 to 118 1/2 lbs. 595c to 600c; 118 1/2 to 119 1/2 lbs. 600c to 605c; 119 1/2 to 120 1/2 lbs. 605c to 610c; 120 1/2 to 121 1/2 lbs. 610c to 615c; 121 1/2 to 122 1/2 lbs. 615c to 620c; 122 1/2 to 123 1/2 lbs. 620c to 625c; 123 1/2 to 124 1/2 lbs. 625c to 630c; 124 1/2 to 125 1/2 lbs. 630c to 635c; 125 1/2 to 126 1/2 lbs. 635c to 640c; 126 1/2 to 127 1/2 lbs. 640c to 645c; 127 1/2 to 128 1/2 lbs. 645c to 650c; 128 1/2 to 129 1/2 lbs. 650c to 655c; 129 1/2 to 130 1/2 lbs. 655c to 660c; 130 1/2 to 131 1/2 lbs. 660c to 665c; 131 1/2 to 132 1/2 lbs. 665c to 670c; 132 1/2 to 133 1/2 lbs. 670c to 675c; 133 1/2 to 134 1/2 lbs. 675c to 680c; 134 1/2 to 135 1/2 lbs. 680c to 685c; 135 1/2 to 136 1/2 lbs. 685c to 690c; 136 1/2 to 137 1/2 lbs. 690c to 695c; 137 1/2 to 138 1/2 lbs. 695c to 700c; 138 1/2 to 139 1/2 lbs. 700c to 705c; 139 1/2 to 140 1/2 lbs. 705c to 710c; 140 1/2 to 141 1/2 lbs. 710c to 715c; 141 1/2 to 142 1/2 lbs. 715c to 720c; 142 1/2 to 143 1/2 lbs. 720c to 725c; 143 1/2 to 144 1/2 lbs. 725c to 730c; 144 1/2 to 145 1/2 lbs. 730c to 735c; 145 1/2 to 146 1/2 lbs. 735c to 740c; 146 1/2 to 147 1/2 lbs. 740c to 745c; 147 1/2 to 148 1/2 lbs. 745c to 750c; 148 1/2 to 149 1/2 lbs. 750c to 755c; 149 1/2 to 150 1/2 lbs. 755c to 760c; 150 1/2 to 151 1/2 lbs. 760c to 765c; 151 1/2 to 152 1/2 lbs. 765c to 770c; 152 1/2 to 153 1/2 lbs. 770c to 775c; 153 1/2 to 154 1/2 lbs. 775c to 780c; 154 1/2 to 155 1/2 lbs. 780c to 785c; 155 1/2 to 156 1/2 lbs. 785c to 790c; 156 1/2 to 157 1/2 lbs. 790c to 795c; 157 1/2 to 158 1/2 lbs. 795c to 800c; 158 1/2 to 159 1/2 lbs. 800c to 805c; 159 1/2 to 160 1/2 lbs. 805c to 810c; 160 1/2 to 161 1/2 lbs. 810c to 815c; 161 1/2 to 162 1/2 lbs. 815c to 820c; 162 1/2 to 163 1/2 lbs. 820c to 825c; 163 1/2 to 164 1/2 lbs. 825c to 830c; 164 1/2 to 165 1/2 lbs. 830c to 835c; 165 1/2 to 166 1/2 lbs. 835c to 840c; 166 1/2 to 167 1/2 lbs. 840c to 845c; 167 1/2 to 168 1/2 lbs. 845c to 850c; 168 1/2 to 169 1/2 lbs. 850c to 855c; 169 1/2 to 170 1/2 lbs. 855c to 860c; 170 1/2 to 171 1/2 lbs. 860c to 865c; 171 1/2 to 172 1/2 lbs. 865c to 870c; 172 1/2 to 173 1/2 lbs. 870c to 875c; 173 1/2 to 174 1/2 lbs. 875c to 880c; 174 1/2 to 175 1/2 lbs. 880c to 885c; 175 1/2 to 176 1/2 lbs. 885c to 890c; 176 1/2 to 177 1/2 lbs. 890c to 895c; 177 1/2 to 178 1/2 lbs. 895c to 900c; 178 1/2 to 179 1/2 lbs. 900c to 905c; 179 1/2 to 180 1/2 lbs. 905c to 910c; 180 1/2 to 181 1/2 lbs. 910c to 915c; 181 1/2 to 182 1/2 lbs. 915c to 920c; 182 1/2 to 183 1/2 lbs. 920c to 925c; 183 1/2 to 184 1/2 lbs. 925c to 930c; 184 1/2 to 185 1/2 lbs. 930c to 935c; 185 1/2 to 186 1/2 lbs. 935c to 940c; 186 1/2 to 187 1/2 lbs. 940c to 945c; 187 1/2 to 188 1/2 lbs. 945c to 950c; 188 1/2 to 189 1/2 lbs. 950c to 955c; 189 1/2 to 190 1/2 lbs. 955c to 960c; 190 1/2 to 191 1/2 lbs. 960c to 965c; 191 1/2 to 192 1/2 lbs. 965c to 970c; 192 1/2 to 193 1/2 lbs. 970c to 975c; 193 1/2 to 194 1/2 lbs. 975c to 980c; 194 1/2 to 195 1/2 lbs. 980c to 985c; 195 1/2 to 196 1/2 lbs. 985c to 990c; 196 1/2 to 197 1/2 lbs. 990c to 995c; 197 1/2 to 198 1/2 lbs. 995c to 1000c; 198 1/2 to 199 1/2 lbs. 1000c to 1005c; 199 1/2 to 200 1/2 lbs. 1005c to 1010c; 200 1/2 to 201 1/2 lbs. 1010c to 1015c; 201 1/2 to 202 1/2 lbs. 1015c to 1020c; 202 1/2 to 203 1/2 lbs. 1020c to 1025c; 203 1/2 to 204 1/2 lbs. 1025c to 1030c; 204 1/2 to 205 1/2 lbs. 1030c to 1035c; 205 1/2 to 206 1/2 lbs. 1035c to 1040c; 206 1/2 to 207 1/2 lbs. 1040c to 1045c; 207 1/2 to 208 1/2 lbs. 1045c to 1050c; 208 1/2 to 209 1/2 lbs. 1050c to 1055c; 209 1/2 to 210 1/2 lbs. 1055c to 1060c; 210 1/2 to 211 1/2 lbs. 1060c to 1065c; 211 1/2 to 212 1/2 lbs. 1065c to 1070c; 212 1/2 to 213 1/2 lbs. 1070c to 1075c; 213 1/2 to 214 1/2 lbs. 1075c to 1080c; 214 1/2 to 215 1/2 lbs. 1080c to 1085c; 215 1/2 to 216 1/2 lbs. 1085c to 1090c; 216 1/2 to 217 1/2 lbs. 1090c to 1095c; 217 1/2 to 218 1/2 lbs. 1095c to 1100c; 218 1/2 to 219 1/2 lbs. 1100c to 1105c; 219 1/2 to 220 1/2 lbs. 1105c to 1110c; 220 1/2 to 221 1/2 lbs. 1110c to 1115c; 221 1/2 to 222 1/2 lbs. 1115c to 1120c; 222 1/2 to 223 1/2 lbs. 1120c to 1125c; 223 1/2 to 224 1/2 lbs. 1125c to 1130c; 224 1/2 to 225 1/2 lbs. 1130c to 1135c; 225 1/2 to 226 1/2 lbs. 1135c to 1140c; 226 1/2 to 227 1/2 lbs. 1140c to 1145c; 227 1/2 to 228 1/2 lbs. 1145c to 1150c; 228 1/2 to 229 1/2 lbs. 1150c to 1155c; 229 1/2 to 230 1/2 lbs. 1155c to 1160c; 230 1/2 to 231 1/2 lbs. 1160c to 1165c; 231 1/2 to 232 1/2 lbs. 1165c to 1170c; 232 1/2 to 233 1/2 lbs. 1170c to 1175c; 233 1/2 to 234 1/2 lbs. 1175c to 1180c; 234 1/2 to 235 1/2 lbs. 1180c to 1185c; 235 1/2 to 236 1/2 lbs. 1185c to 1190c; 236 1/2 to 237 1/2 lbs. 1190c to 1195c; 237 1/2 to 238 1/2 lbs. 1195c to 1200c; 238 1/2 to 239 1/2 lbs. 1200c to 1205c; 239 1/2 to 240 1/2 lbs. 1205c to 1210c; 240 1/2 to 241 1/2 lbs. 1210c to 1215c; 241 1/2 to 242 1/2 lbs. 1215c to 1220c; 242 1/2 to 243 1/2 lbs. 1220c to 1225c; 243 1/2 to 244 1/2 lbs. 1225c to 1230c; 244 1/2 to 245 1/2 lbs. 1230c to 1235c; 245 1/2 to 246 1/2 lbs. 1235c to 1240c; 246 1/2 to 247 1/2 lbs. 1240c to 1245c; 247 1/2 to 248 1/2 lbs. 1245c to 1250c; 248 1/2 to 249 1/2 lbs. 1250c to 1255c; 249 1/2 to 250 1/2 lbs. 1255c to 1260c; 250 1/2 to 251 1/2 lbs. 1260c to 1265c; 251 1/2 to 252 1/2 lbs. 1265c to 1270c; 252 1/2 to 253 1/2 lbs. 1270c to 1275c; 253 1/2 to 254 1/2 lbs. 1275c to 1280c; 254 1/2 to 255 1/2 lbs. 1280c to 1285c; 255 1/2 to 256 1/2 lbs. 1285c to 1290c; 256 1/2 to 257 1/2 lbs. 1290c to 1295c; 257 1/2 to 258 1/2 lbs. 1295c to 1300c; 258 1/2 to 259 1/2 lbs. 1300c to 1305c; 259 1/2 to 260 1/2 lbs. 1305c to 1310c; 260 1/2 to 261 1/2 lbs. 1310c to 1315c; 261 1/2 to 262 1/2 lbs. 1315c to 1320c; 262 1/2 to 263 1/2 lbs. 1320c to 1325c; 263 1/2 to 264 1/2 lbs. 1325c to 1330c; 264 1/2 to 265 1/2 lbs. 1330c to 1335c; 265 1/2 to 266 1/2 lbs. 1335c to 1340c; 266 1/2 to 267 1/2 lbs. 1340c to 1345c; 267 1/2 to 268 1/2 lbs. 1345c to 1350c; 268 1/2 to 269 1/2 lbs. 1350c to 1355c; 269 1/2 to 270 1/2 lbs. 1355c to 1360c; 270 1/2 to 271 1/2 lbs. 1360c to 1365c; 271 1/2 to 272 1/2 lbs. 1365c to 1370c; 272 1/2 to 273 1/2 lbs. 1370c to 1375c; 273 1/2 to 274 1/2 lbs. 1375c to 1380c; 274 1/2 to 275 1/2 lbs. 1380c to 1385c; 275 1/2 to 276 1/2 lbs. 1385c to 1390c; 276 1/2 to 277 1/2 lbs. 1390c to 1395c; 277 1/2 to 278 1/2 lbs. 1395c to 1400c; 278 1/2 to 279 1/2 lbs. 1400c to 1405c; 279 1/2 to 280 1/2 lbs. 1405c to 1410c; 280 1/2 to 281 1/2 lbs. 1410c to 1415c; 281 1/2 to 282 1/2 lbs. 1415c to 1420c; 282 1/2 to 283 1/2 lbs. 1420c to 1425c; 283 1/2 to 284 1/2 lbs. 1425c to 1430c; 284 1/2 to 285 1/2 lbs. 1430c to 1435c; 285 1/2 to 286 1/2 lbs. 1435c to 1440c; 286 1/2 to 287 1/2 lbs. 1440c to 1445c; 287 1/2 to 288 1/2 lbs. 1445c to 1450c; 288 1/2 to 289 1/2 lbs. 1