

### COOLIDGE WILL TAKE ACTION IN SHIP SQUABBLE

Washington, Sept. 26.—(A. P.)—President Coolidge has taken a hand in the Shipping Board situation where President Palmer of the Fleet corporation and a majority of the seven members of the board are practically in a deadlock.

At conferences late yesterday and today with commissioners, the chief executive inquired into the situation and while no formal announcement was made there were indications that some move for a definite solution of the tangle might be looked for soon.

Chairman O'Connor, who discussed conditions with Mr. Coolidge last Monday, conferred again with him late yesterday and today. Commissioners Plummer and Hill were called to the White House. None of the commissioners would state what had occurred.

For months the board and Mr. Palmer have been at loggerheads with five of the seven commissioners from time to time indicating disagreement with the fleet corporation president and dissatisfaction with many of his executive acts.

### EVERYTHING IN READINESS FOR OPENING

(Continued from Page One)

observe open hours all day Monday, furnishing motor transportation to visiting members and looking after their pleasure generally.

The drum corps competitive events in the stadium Monday evening promise to bring out the crowds, and the night will conclude with a dance in McElroy's dance pavilion on the grounds.

Among those most active in putting Legion day across are: Clifford Brown, Karl Hinges, Victor McKensie, W. H. McKnight and H. H. White.

The entire Pacific coast will be represented in the livestock show, which should stand well at the head of these events this year. California has come forward with its best support in years; Washington and Idaho are shipping splendid exhibits and Oregon is to have more herds, thinned out to adhere to higher standards of breeding. "We are more than pleased over the way livestock folk have responded this year," Mrs. Ella Schultz Wilson, secretary of the fair board, said this week.

The interest and co-operation of outside breeders is especially appreciated, for many of the herds and flocks entered are coming from a long distance at considerable expense to their owners. It proves conclusively the vital concern felt by livestock men in this, one of the foremost shows on the Pacific coast."

Judges Are Selected.

Mrs. Wilson has just given out

the names of livestock judges: John Hall of Groton S. D., and Thomas A. Shattuck of Hastings, Neb.; swine: F. W. Van Natta of Upland, Cal., beef cattle: Axel Hansen of Savage, Minn., and J. W. Redgeway of Fortworth, Texas; dairy cattle: J. M. Jones of Sonora, Texas, and A. L. Rinehart of Blaine, Idaho, sheep and goats: A. R. Hunter of Long Beach, Cal., and Joe Wood of La Grande, Or.; horses: H. E. Osborn of Portland, rabbits. All these men come new to their work here. Robert V. Moore of San Leandro, Cal., who judged pigeons here last year, will fill the same position again. L. W. Wisenborn and A. S. Welant, both of Portland, will judge poultry.

In the main building the greatest display of agriculture and horticultural products will be placed, many more counties than ever before shipping exhibits. These will demonstrate the industries of the various localities and will prove, it is thought, the best kind of advertising. No prizes will be awarded, but each county making a creditable display will be given \$100 by the fair board. The floral exhibit, in this building, will be the finest in years, being put on by all the leading florists of the state.

Auto Show Kie Feature.

The south wing of the main building will house, what is undoubtedly the most interesting and attractive exhibit ever put on in the state fair art department. This will comprise 250 of the best photographs shown at the recent Pacific International Photographers' convention in San Francisco.

The automobile show will be outstanding, with the auto styles show and parade arranged as a feature Saturday, attracting the attention of leading dealers as well as individual owners of fine cars. The machinery shed will be full to overflowing; the educational building will house its largest and most comprehensive exhibits, including all the state institutions, the Oregon Agricultural college and the state industrial clubs.

Many more boys and girls are expected to exhibit this year than heretofore, entering both in the club division and in the open classes. They will occupy their new building on the grounds, and will have many things of an entertainment nature arranged for their pleasure.

Many Notables Coming.

A number of visitors of note will be honored during the week as guests of the state fair board. An invitation has just been extended to Governor Rollin Hartley of Washington to be present on Wednesday, Salem and Governor's day, and it is expected that he will respond favorably. Governor Walter M. Pierce will be a guest of honor on this date, the derby being a feature race for him. The winning horse will be crowned by Miss Eva J. Sande of Salem, a sister of Earl Sande, America's premier jockey. On Thursday, Miss Virginia Ringler, queen of the recent Gresham fair and her retinue of attendants, will be entertained by the fair board.

Special rates have been granted on all railroad and stage lines and it is fully expected that each day, arranged for the various organizations in the state, will attain a high water mark in point of attendance.

Kindergarten for Kiddies.

Patrons of the fair are assured of adequate police protection and accommodations, both in the way of checking rooms and kindergarten services. Harry Cook of Newport, who supervised the fair police force last year, will be desk sergeant again this year. Twenty picked men from various points in the state will work under him, the system utilized during the week being identical to that of a city, with beats outlined and the men working in shifts. W. A. Tyler, known in Portland as the "Smiling Cop," will welcome visitors at the main entrance.

Members of the Portland Parent-Teacher association will con-

duct a kindergarten in the educational building, where parents may leave their small children during each day. The Salem High School Community club will again conduct the checking room north of the main entrance.

J. H. McClintock, veteran auditor at the fair, is again here to check up on the crowds. Arriving Friday from Roseburg, McClintock brings word that the Umpqua

chiefs, their families and friends are preparing to come three hundred strong on Friday—Hospitality day—coming through on the Roseburg special. They have been rehearsing their stunts to be put on in competition with other booster clubs, for months past, according to McClintock and are counting on taking away one or more of the trophy cups offered by the fair board.

### Deaden Bath-room Noise this Way

Use Celotex in the construction of the walls, as a plaster basis. This material is a very effective sound deadener. Too it has good insulating qualities, when used in the outer walls of a frame house, making it warmer in winter and cooler in summer.

Let us show you further how Celotex can save you money in Home building.

### Oregon Gravel Co.

Hood at Front Street

### Oregon Pulp & Paper Co.

SALEM, OREGON

Manufacturers of Sulphite, and Manila Wrappings. Also Butchers Wrappings, Adding Machine Paper, Greaseproof, Glassine, Drug Bond, Tissue, Screenings and Specialties.

### Prices Cut

20% TO 30% On Federal and Viking TIRES

A series of fortunate purchases made possible by our tremendous buying power enables us to SAVE YOU MONEY on high grade tires as follows:

	Regular Price	Sale Price
30x3 1/2 Blue Pennant Giant	\$15.50	\$13.80
30x3 1/2 Overize Cord	12.00	9.30
30x3 1/2 Regular Cord	10.75	7.95
31x4 Blue Pennant Cord	27.00	21.50
32x4 Blue Pennant Cord	29.40	21.75
32x4 Blue Pennant Cord	29.75	22.25
32x4 1/2 Blue Pennant Cord	39.00	29.25
32x4 1/2 Blue Pennant Cord	39.85	29.25
33x4 1/2 Blue Pennant Cord	49.50	29.25
33x5 Blue Pennant Cord	51.85	36.00

Balloon Tires Also Reduced

EXTRA SPECIAL

29x4.40 Balloon Cord ..... \$13.95

30x3 1/2 Giant Cord, reg. \$15.50 ..... \$11.75

Reg. \$29.40 32x4 Overize cord. . . \$17.50

BARGAIN—Raincoats and Top Coats ..... \$4.95 to \$16.50

Drive in for Free Service—See us before you buy.

### MALCOM HAS THE TIRES DRIVE IN

COMMERCIAL and COURT STS. Portland—Broadway and Davis Streets

# NINE VITAL FACTS

Here, in brief form, we present for your information nine vital facts underlying the success of Dodge Brothers, Inc., and the goodness and value of their product.

Dodge Brothers, Inc., consider these facts so fundamentally important to the motor car buyer that they will be repeated, from time to time, until every newspaper reader in America may be presumed to have read them:

Dodge Brothers, during the past eleven years, have built and sold more than one million four hundred thousand motor cars—and more than 90% of these cars are still in service. This record requires no comment. It stands impressively alone in motor car history.

ments have saved Dodge Brothers owners many prolongs of dollars by materially prolonging motor car life and by effecting marked economies in manufacture. This construction has also reduced incalculably the danger from accident and fire.

It has never been Dodge Brothers policy to build yearly models. When an improvement, that is really an improvement, is discovered, it is made at once. Their slogan, "Constantly Improved But No Yearly Models" is familiar the world over.

Dodge Brothers sell directly through their dealers to the purchaser. There are no sectional distributing agencies to increase the cost of distribution and the cost of the car.

Dodge Brothers build one chassis and only one. This policy materially lowers manufacturing cost. It also enables Dodge Brothers engineers to concentrate their entire time and thought on the betterment of this one type.

Dodge Brothers have never given so-called "free service." The car is sold at a fair and honest price. Nothing is added to this original purchase price to pay for service that the owner may never need.

Dodge Brothers have never had an "off year" or an "off car." This is because they have never used the public as a testing ground for "new models" or lowered the quality of their product in the slightest degree. Every change has been an improvement on the original design.

Dodge Brothers Dealers were pioneers in unanimously adopting the flat rate service system. By this system, the owner knows in advance what any service job will cost. There are no unpleasant surprises in his bills.

Dodge Brothers pioneered in building the first all-steel open car and the first all-steel closed car. These epochal develop-

The sturdiness and long life of Dodge Brothers Motor Car is reflected in its resale value. Comparatively few Dodge Brothers Motor Cars are advertised in the resale columns of the newspapers. The values they bring testify unanswerably to their goodness—and the public's belief in their goodness.

The purchase of an automobile is a serious and important business. The time has passed when transient novelties can lead a thoughtful buyer to overlook the great essentials of motor car worth.

A few of these essentials are clearly outlined above. They go far to explain why Dodge Brothers name is accepted, the world over, as the hall mark of dollar-for-dollar value.

## A Bargain In Quality

### Fine One-Profit Studebaker Coach

—at a new low price

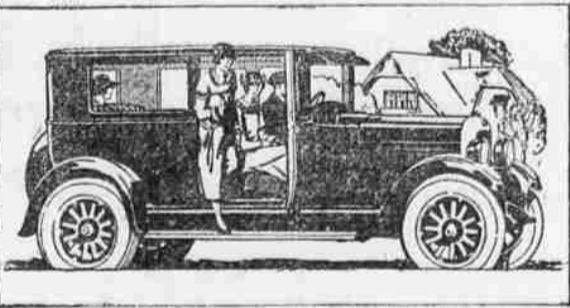
THIS Standard Six Coach has always been a wonderful value—a leader of the Studebaker line. Yet on August 1st, its previous low price was reduced one hundred dollars.

Today you can buy the same fine car without a single change in equipment or construction—at this new low price which only further emphasizes the Studebaker policy of offering you a "bargain in quality."

Here is a truly fine coach—built throughout from quality materials and careful workmanship. Fine northern white ash and hard maple are used in body construction. We pay a premium to obtain the toughest grades of steel. The upholstery is a durable woolen fabric—the windshield and windows are real plate glass. Extra equipment includes a gasoline gauge, clock, stop light, etc.

According to the rating of the National Automobile Chamber of Commerce this Standard Six Coach is the most powerful car of its size and weight. Full-size balloon tires and an especially designed steering mechanism add to its riding and driving ease. A completely machined crankshaft gives perfect engine balance and reduces vibration to a minimum.

Yet this Standard Six Coach sells for no more than competing cars—its low price is



\$1375 Delivered for Cash in Salem

Or, under Studebaker's fair and liberal Budget Payment Plan, this Coach may be purchased out of monthly income with an initial payment of only..... \$475

made possible by the Studebaker policy of one-profit manufacture.

There are only two cars manufactured on this one-profit basis. Studebaker in the fine car field, and the Ford in the low priced field. Only in these two cases does one company, in its own plants make all bodies, all engines, all clutches, steering gears, differentials, springs, gear sets, gray iron castings and drop forgings.

This one-profit policy not only eliminates the extra profits of outside parts and body makers—but it also makes possible unit-built construction. All parts for Studebaker cars are designed, engineered and built as a unit. And being built as a unit they function as a unit—which results in years longer life, scores of thousands of miles of excess transportation, greater riding comfort, lower repair costs and much higher resale value.

But the only way to judge this Standard Six Coach is to see it—to actually sit behind the wheel and drive it through the thick of traffic, over the steepest hills and rough country roads. Then, and only then, can you completely appreciate its amazing power, its velvet smoothness and wonderful riding qualities.

### MARION AUTOMOBILE CO.

Phone 362. Open Day and Night. 235 S. Com'l

THIS IS A STUDEBAKER YEAR