

# Representative Citizens of Salem



Photo by Gunnell-Robb

**Judge H. J. Bean**  
Elected Justice of the Supreme Court in 1910 and re-elected in 1914. Member of the Legislature of 1889. Served as District Attorney of the Sixth district from 1896 to 1900. Circuit Judge of the Sixth district from 1906 to 1910. County Judge Umatilla county 1904 to 1906. City Attorney of Pendleton 1882-1884, Recorder 1885-1886.

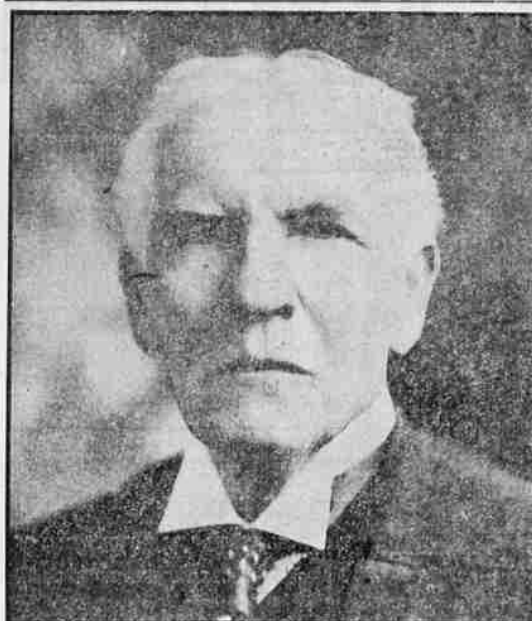


Photo by Gunnell-Robb

**Judge Thos. A. McBride**  
Justice of the Supreme Court since 1909. Admitted to the bar 1870, member of the Legislature 1876; District Attorney Fifth district 1882-1892; Circuit Judge 1892 until his appointment to the Supreme bench in 1909. Was elected in 1914 to Supreme bench and re-elected in 1920.



Photo by Gunnell-Robb

**Judge John L. Rand**  
Justice of the Supreme Court since 1921, re-elected in 1922; State Senator 1903-1905; District Attorney of the Sixth district from 1888 to 1890 and from 1894 to 1896. Delegate to the Republican National Convention at Chicago 1920.



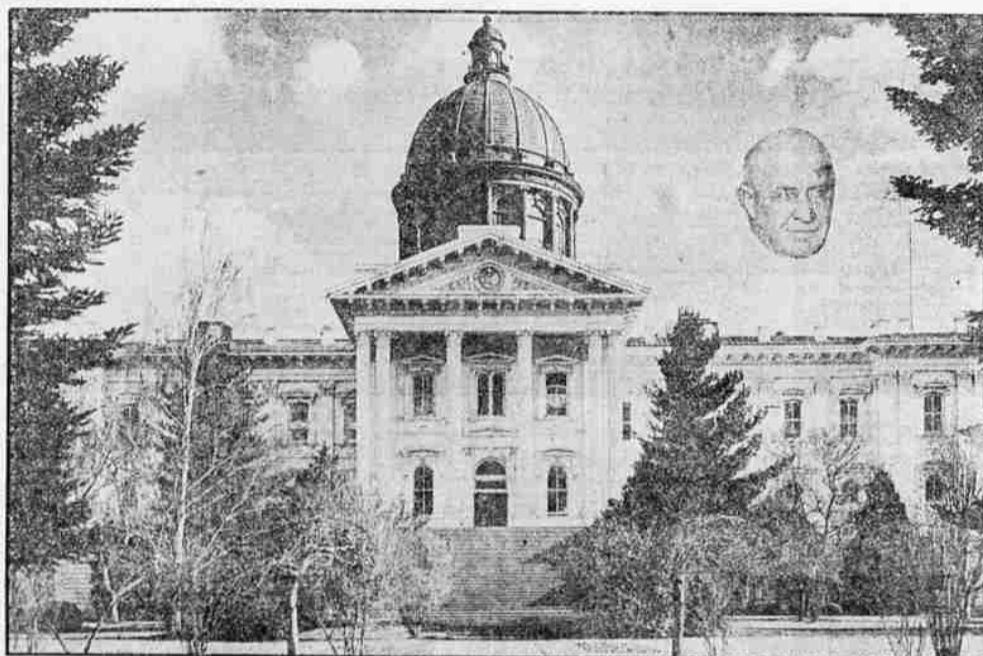
Photo by Gunnell-Robb

**Judge Geo. M. Brown**  
Justice of the Supreme Court since 1920. Elected Attorney General in 1914 and re-elected in 1918. Served as District Attorney Second district 1894-1905; Deputy District Attorney, Second district 1891-1894; taught school to raise money to enable himself to study law.



Photo by Gunnell-Robb

**Judge O. P. Coshov**  
Justice of the Supreme Court since January 1, 1924. State Senator from 1905 to 1909. Prominent lawyer of the state. Served for ten years on the Board of Higher Curricula.



State Capitol Building, Salem, Oregon. Insert Governor Walter M. Pierce Photo by Brown



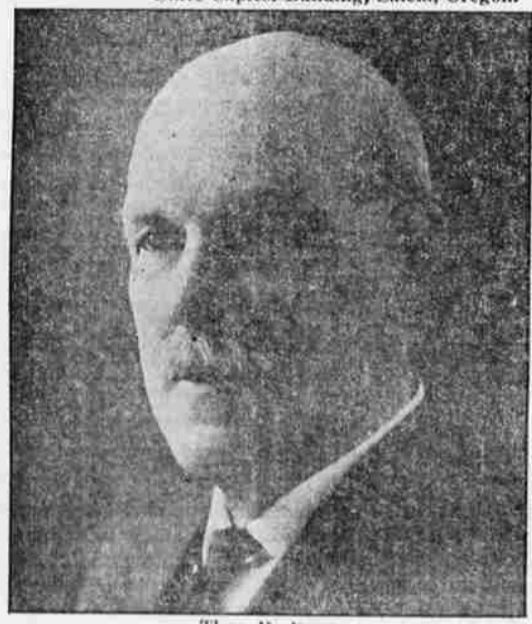
Photo by Gunnell-Robb

**Judge Harry H. Belt**  
Elected Justice of the Supreme Court 1924. Served as Circuit Judge of the Twelfth Judicial District for ten years from 1915 to 1925. Was County School Superintendent of Yamhill county from 1903 to 1906 when he resigned to take up the study of law.



Photo by Kennell & Ellis

**T. A. Livesley**  
Prominent Hop Grower and Merchant. Active and liberal in civic betterment. President T. A. Livesley & Co., director Alaska Petroleum Company.



Thos. B. Kay

Now serving his third term as State Treasurer. Represented Marion county in the state legislature 1903-1905 in the House and in 1907-1909 in the Senate. Was State Treasurer from 1911 to 1919. Served Marion county again in the Legislature of 1923. Woolen manufacturer, active in the upbuilding of Salem.



Sam Kozier

Led the ticket and was re-elected Secretary of State 1924, which office he has held with honor since 1920. Was Deputy Secretary of State from 1911 to 1920. Insurance Commissioner from 1905 to 1911. Auditing Clerk from 1899 to 1907. Chief Clerk 1907-1909.



William Munroe Hamilton

Has held various positions with the Portland Electric Power Company for 20 years. Manager of the Willamette Valley Division, comprising about \$2,000,000 of its invested capital, for 14 years. Active in civic affairs. Former President Salem Chamber of Commerce and ex-King Bing of the Cherrians.



Photo by Brown

**Dr. Henry E. Morris**  
President Morris Optical Co., president Federated Clubs of Salem, serving second term as Director of the Social Department of the Salem Chamber of Commerce, Secretary Oregon State Optical Board, ex-president Salem Kiwanis Club and Director Willamette Chapter of the Red Cross.



Judge P. H. D'Arcy

Noted lawyer of the State and pioneer citizen active in Salem's upbuilding. Ex-Mayor of Salem and Municipal Judge. Served as clerk of Supreme Court. Former president Oregon Pioneer Association, director Oregon Historical Society, president Champoug Memorial Association.



Photo by Gunnell-Robb

**Harry M. Levy**  
Ex-President of the Salem Associated Charities 1922 and 1923. Chairman of the American Red Cross 1924. Prominent among the younger group of workers for civic and municipal advancement.



C. P. Bishop

Prominent merchant of Salem for over thirty-five years. Mayor of Salem 1889 to 1905. Represented Marion County in the State Senate 1915-1917. Has been active and willing in giving his services to the state and municipality. His most marked achievements have been in the upbuilding of the Bishop Woolen Mills industries in the Northwest.