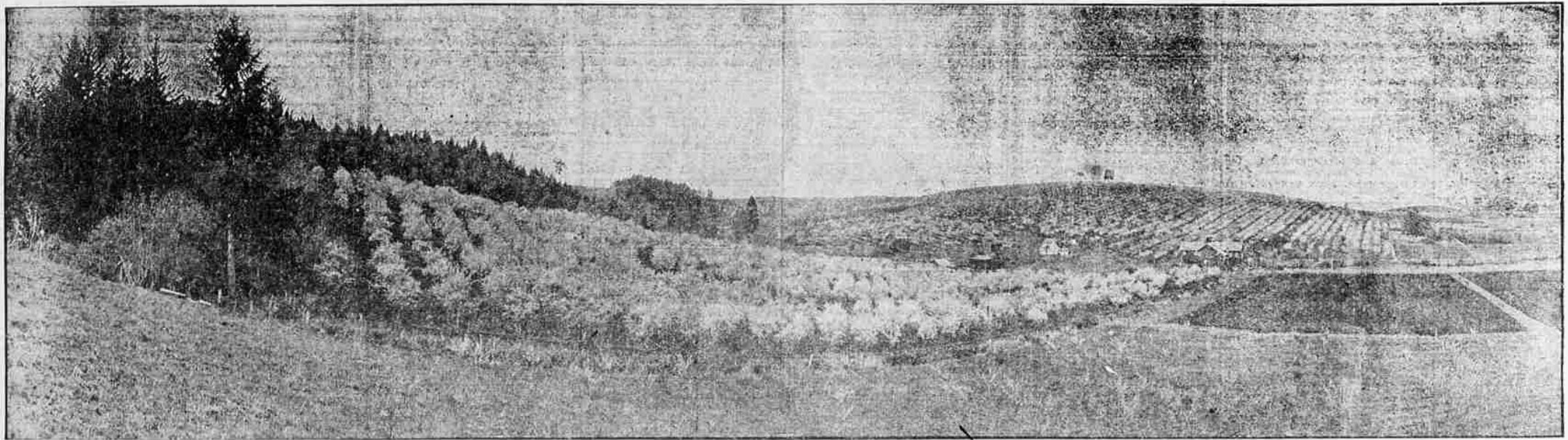


# W. H. Grabenhorst & Co. REALTORS INSURANCE

We Specialize in Farm Lands, City and Suburban Property and Business Investments

We Write All Forms of Fire, Auto and Casualty Insurance and Surety Bonds

SALEM AND VICINITY IS A FRUIT AND BERRY CENTER OF THE WORLD



PHONE OR WRITE FOR OUR DESCRIPTIVE PAMPHLET OF MARION COUNTY

### FARMS AND SUBURBAN ACREAGES

200 acre farm all under the plow with the exception of about 6 acres in timber, 7 room plastered house, large barn, family fruit, good grain and hay land, first class for berries and prunes, cherries, walnuts and filberts; good drainage, rock road and 7 1/2 miles south of Salem. Price \$100 per acre.

240 acre farm located East of Salem in the Waldo Hills, 120 acres cultivated, balance in pasture and timber; 7 room house, barn, several springs, close to school, good road, first class grain and fruit soil; also walnut and filberts. This place is offered at a bargain. Price \$15,000.

86 acres of fine dark prairie soil located on main paved highway 4 miles east of Salem; all cultivated, best of prairie soil, first class grain, clover and bhahy hlahahd, first class for small fruit. Price \$175 per acre. Terms at 6%.

60 acres of fine bottom land all under cultivation, running water; 14 acres loganberries; buildings; 2 miles from small town and railroad, sixteen miles from Salem. Some machinery. Price \$7,000. Terms 6%.

320 acre farm, 80 acres under plow, balance timber and pasture; at least fifteen thousand cords of standing fir timber, worth what you pay for the place. Old House and barn, spring water, 10 miles from Salem, close to main paved highway. A real buy at \$65 per acre. Terms at 6%.

105 acre farm located on paved road close to Salem, all fine dark prairie soil. House and two barns. This is first class soil and would make a fine subdivision for 10 acre tracts. Price \$25,000. Terms.

84 acre farm with some fine bottom soil located on main Pacific Highway south of Salem. 3 room house, barn; about 2,000 cords of standing fir timber, running water, 44 acres in cultivation. Would make a fine dairy farm. Price \$9,000. Terms at 6%.

30 acre farm located near Sheridan, Oregon; 4 room house, barn; 15 acres in cultivation, balance pasture and timber, 2 acres prunes. Gravel road, 4 1/2 miles from town. Price \$4,000.

39 acres located near Shaw, Oregon; 25 acres in cultivation, balance pasture and timber; 6 room house, barn, chickens, houses, spring water, good road, and 1/2 mile from pavement; some machinery goes. Price \$6,000.

80 acres located 6 miles from Salem, 16 acres under cultivation, balance pasture and timber, gravel road, small house and barn. Price \$5,000. \$1,000 down, balance terms.

82 acre farm located north of Salem near Oregon Electric Railroad, 65 acres under cultivation, balance pasture, 9 room modern house, barn, water pipe to all buildings. First-class general farm. Price \$16,400.

150 acre farm located on main paved highway; 8 room modern house, barn, 36 by 56 feet, all cultivated and a first class general farm, one mile from good town. Price \$31,500.

233 acre farm, 6 room modern house, large barn, and other out-buildings; 200 acres cultivated, balance pasture. All machinery, 16 cows, 3 horses, 25 hogs, chickens; 8 miles from Albany. Fine soil. Price \$150 per acre. Terms.

122 acre farm located northeast of Salem 12 miles; 60 acres under cultivation, balance pasture and timber; 8 room house, bath, toilet, lights, good barn. All farm machinery goes. Some stock. Price \$16,500. Terms.

307 acre improved farm; located within three miles of good valley small town, 150 acres farm land, balance pasture. Fair improvement, house, barn, etc.; well fenced and cross fenced. Included with farm is 100 head of sheep. Price \$17,500.

338 acres, all farming land. This place is located about four miles from a good valley town. Well improved with good house, barn and a number of outbuildings and stock sheds. Well fenced and cross-fenced. Included with this farm is 130 head of sheep. Price \$22,000.

52 acres of fine soil located north of Salem on the main Pacific Highway; no buildings; will subdivide in 15 acre tracts; 6 miles from Salem. Price \$300 per acre. Terms at 6%.

42 acre farm near Bona Vista on the Willamette river, all cultivated; 5 room bungalow, barn, water piped to buildings, 3/4 mile from paved road. Price \$5,000; \$2,000 down, balance terms.

20 acre fruit ranch, prunes, cherries, strawberries, logans; 8 room house, barn, spring water and creek, some timber; paved road, close to school and four miles from Salem. Price \$8,000. Terms at 6% interest.

10 acre fruit farm, nearly all in bearing fruit, 4 room cottage, drilled well, garage, chicken-house, gravel road, 1/2 mile from pavement. Price \$3,600. Four miles out.

15 acre tract located on main paved highway, 7 room house and good barn; 2 acres prunes, running water, pasture and timber, a fine home place, 3 miles from Salem. Price \$7,500. Terms.

12 acres mostly in prunes, close pavement and on good road, 4 miles from Salem, fine location, well settled section. Price \$4,500, \$500 down, balance terms at 6% interest.

20 acres of fine dark prairie soil located east of Salem, two miles, all cultivated, fine soil. Price \$3,200, \$500 down, balance terms to suit.

3 acres of fine soil located close to Salem on good street, all cultivated, running water, fine view. Price \$1,600, \$200 down, balance \$15 per month, interest 6%.

1 acre close in on paved highway, house, well, fruit, close to school and store, a good buy at \$2,200, \$500 down, balance \$25 per month.

5 acres with buildings located north of Salem, close in, some timber, gravel road, close to pavement. Price \$2,500, \$500 down, balance \$20 per month, interest 6%.

5 acres with good 5 room plastered cottage, near pavement on gravel road, 3 miles from Salem. An exceptional buy at \$2,100. Terms.

3 acres well improved located close to Salem, good 5 room cottage, plenty of fruit, gravel street and close to pavement and carline. Price \$4,200.

Well improved 10 acre tract located just in the edge of the City of Salem. Good 7 room modern home, brn, 1 acre strawberries, 1/2 acre red raspberries and black-caps; 6 tons of hay. Will take city residence up to \$4,000 as part payment. Price \$10,000.

Improved 15 acre tract located 3 miles out on paved road, 5 room plastered cottage, barn, plenty of fruit, apples, prunes and pears and some berries. Price \$8,500.

40 acres all in producing Franquet walnuts, with prune fillers, 12 years old and producing good crops; these trees have had first-class care and are in first-class condition, located 7 miles from Salem. If you are interested in securing a walnut orchard, let us show you this tract. Price \$700 per acre.

56 acre fruit farm, 15 acres bearing prunes, 2 acres logans, 10 acres strawberries, some pasture and timber; land mostly under cultivation; 5 room house, large barn, well, close to pavement, rock road, close to school. Will consider good home in Salem as part payment. Price \$10,000.

### CITY HOMES

**LOW PRICED HOMES**

\$550 buys a fine 1/2 acre tract with NEW garage house, electric lights, city water, near school and car line; \$275 down will handle.

\$1,250 buys a 3 room garage house with two large lots, located in north Salem; paved street; \$220 down will handle.

\$1,700 buys a 5 room plastered home with large lot, large sleeping porch, ten fine fruit trees, located in North Salem; \$850 down will handle.

\$1,850 buys a 5 room home with East front lot, garage, the house is partly furnished; \$650 down will handle.

\$2,000 buys a 4 room plastered home with part basement, screened in back porch, large north front lot, located in the exclusive Fairmount Hill district; \$500 down will handle or will consider good car for the down payment.

\$2,350 buys a NEW 5 room bungalow just completed, full basement, garage, built in Dutch kitchen, modern plumbing; located in south Salem near South Commercial street; \$200 down will handle.

\$2,500 buys good 6 room home located on Chemeketa street, full cement basement, large lot 50x150; \$700 down will handle.

\$2,850 buys a 5 room plastered home, garage, paved street, near school and car line, east front; \$500 down will handle.

\$2,775 buys a NEW 4 room plastered bungalow just completed, breakfast nook, fireplace, built in Dutch kitchen, large lot, paved street; \$500 down will handle.

**MODERATE PRICED HOMES**

\$3,000 buys NEW 4 room bungalow with large sleeping porch, fireplace, garage, paved street, on car line near school; an abundance of fine fruit and shade trees; \$1,600 down will handle.

\$3,600 buys good 8 room home plastered throughout, large corner lot, on car line, located in north Salem; \$500 down will handle.

\$3,750 buys a NEW 5 room Stucco bungalow with basement, furnace, garage, plastered throughout, built in Dutch kitchen, built in Murphy bed; \$500 down will handle.

\$3,850 buys a good 6 room home located on north Winter street; modern plumbing, plastered throughout; near school and car line; \$1,500 down will handle.

\$4,000 buys a fine 6 room home located close in on Chemeketa street; garage, modern plumbing, paved street, near car line and schools; will grant easy terms.

\$4,200 buys a NEW 5 room plastered bungalow just completed, located on North Capital street; breakfast nook, cement basement, built in Dutch kitchen, fireplace, east front; \$1,000 down will handle.

\$4,800 buys a NEW 5 room Stucco bungalow just completed; cement basement, fireplace, composition bath room, built-in Dutch kitchen; \$1,000 down will handle.

**HIGH PRICED HOMES**

\$5,000 buys a fine 7 room home located close in on North High street; cement basement, furnace, garage, modern plumbing, plastered throughout, all furnishings included at the above price; \$500 down will handle.

\$5,500 buys a good 9 room home with extra large corner block of land size 168x223 feet—an abundance of fine fruit and shade trees, located close in on D street; here is a home and investment combined.

\$5,500 buys a fine 9 room home located close in on North Commercial street; basement, furnace, garage, extra bath room upstairs; fine fruit and shade trees; \$2,500 down will handle.

\$5,500 buys a NEW 5 room bungalow located in the Exclusive Fairmount Hill district; basement, furnace, built-in kitchen, ivory enamel finish; \$2,000 down will handle.

### CITY HOMES

\$6,000 buys a practically NEW 6 room bungalow located near South Commercial street; full basement, furnace, fireplace, garage, built in Dutch kitchen, breakfast nook; \$1,000 down will handle or will accept smaller home in exchange for part payment.

\$6,500 buys a NEW 5 room Colonial bungalow just completed, located in Parrish Grove; cement basement, furnace, fireplace, garage, paved street, hardwood floors, built in dutch kitchen, book cases, buffet, stucco finish; \$1,500 down will handle.

\$7,400 buys a fine 6 room bungalow located in the exclusive Fairmount Hill district; basement, furnace, fireplace, large corner lot size 109x150; fine shrubbery and fruit and shade trees; \$1,300 down will handle.

### CITY LOTS

**READ THIS AND STOP THOSE RENT RECEIPTS**  
DO YOU KNOW AND REALIZE that \$23 down and \$10 per month will buy a choice lot in the new Kay Addition near school and car line with city water and good location. AND THEN after making the initial payment on the land that you can build a small garage house at a nominal cost—THE PROBLEM IS THEN SOLVED—the rent receipts will cease to accumulate. The price of these lots range from \$200 up to \$300. THESE LOTS ARE NOT HIGH PRICED AND ARE WORTH THE MONEY. LET US SHOW YOU AND YOU WILL AGREE.

IF ONE LOT IS TOO SMALL—THEN let us show you a fine 1/2 acre tract with city water, electric lights, near school and car line, good graded street. Price \$600; AND YOU CAN BUY THESE ON EASY TERMS OF \$50 down and \$10 per month with interest at 6%, AND USE YOUR REMAINING CAPITAL TO ERRECT THAT SMALL GARAGE HOJ7SE—AGAIN YOUR PROBLEM IS SOLVED—the rent receipts cease.

### BUSINESS PROPERTY

\$45,000—Two story brick building located on corner, 67x165 feet; good income. If you are looking for a good investment, we would be pleased to talk with you about this property.

\$10,000—Large house located close in on North Liberty street; three apartments, good income, lot 41x165 feet. This property is bringing a good income as it grows into more value.

\$15,000—Good garage site located close in on North High street, lot 82 1/2 x 165 feet; two houses now on the property; income \$80 per month.

\$30,000—47 foot front on Court street. If you are looking for a Court street frontage, let us tell you about this property.

\$24,500—Corner lot, 85x149 feet. This property is located on the corner of Ferry and High streets. Here is your chance to secure a property that will increase in value.

\$8,500 buys fine warehouse site located on railroad and close in, 82 1/2 by 297 feet; worth the money.

\$11,400—Large house, seven 2-room apartments, furnished; also new 5 room bungalow adjoining; located corner Liberty and Union streets. Good income.

\$10,000—Large 8 room house, and 5 room bungalow located close in on North Cottage street. Good income. Let us show you this property.

There were never better opportunities than now in Marion county for the farmer, stock raiser, fruit grower, investor or homeseeker. Our partial list printed on this page represents only a few of our listings. We would be pleased to learn of your needs, either by personal call or by letter.

# W. H. Grabenhorst & Co.

275 STATE STREET

SALEM, OREGON

TELEPHONE 515

FIFTEEN YEARS SUCCESSFUL SERVICE TO THE PUBLIC