

BUTTER AND EGG MARKET SHOWS HEALTHIER TONE

Portland, May 11—The local dairy market displayed a healthy tone at the opening today. The price of cream, butter and eggs and light receipts. Butter arrivals were small and the market is in good shape.

No change was made in the price of print butter or butterfat over the week end and no change is in sight. Creameries say they will make now in proportion to their requirements, while arrivals of county cubes in this market are readily absorbed.

Print butter is quoted at 42 cents creamery basis, but considerable cash business is being done at prices ranging as low as 40 cents.

Fresh eggs are scarce with local jobbers searching the street for supplies to make up their orders. Extras are still quoted at 32 cents with firsts at 31 cents and pullets at 29 cents. Current receipts are worth 28 1/2 cents net.

Country dressed meats were firmer today with the usual light Monday run. Choice hams are a half cent higher at the 18 cent top with bulk of sales around 15 1/2 cents. Choice light veal held at 14 1/2 cents.

Very little trading in poultry was reported this morning and there was no change in values. Receipts were light but sufficient for requirements.

LIVESTOCK K Portland, May 11—Cattle higher receipts 1250; steers, good \$9.50 @ 10.00; medium \$8.00 @ 9.50; common \$7.00 @ 8.00.

Sheep steady; receipts 1710; heavyweight (250 to 250 pounds) medium, good and choice \$11.75 @ 12.25; medium weight (200 to 300 lbs.) medium, good and choice \$11.00 @ 12.50.

EGGS AND BUTTER Portland, May 11—Eggs firm; current receipts 27 1/2c; pullets 14 1/2c @ 15c; firsts 25 1/2c @ 26c; hen-broilers 27 1/2c @ 28c delivered Portland.

PORTLAND GRAIN Portland, May 11—Wheat bids: hard white, bluestem, hard \$1.65; soft white, western white, north ern spring \$1.55; hard winter \$1.64; western red \$1.53; B.B.B. hard white \$1.75. Today's car receipts: wheat 19, flour 8, corn 2, hay 8.

POULTRY Portland, Ore., May 11—Poultry steady; heavy hens 24 @ 24c; light 21 @ 21c; broilers 26 @ 26c; white ducks 30 @ 35c.

ONIONS AND POTATOES Portland, May 11—Onions nominal, \$1.00 @ 1.25 in country. Potatoes old \$2.25 @ 2.25.

NUTS, HOPS AND CANGARA Portland, May 11—Nuts quiet; Walnuts 23 @ 32c; filberts nominal.

Portland, May 11—Hops weak; new clusters 12 @ 14c; fuggles 14 @ 15c; old crop nominal.

Portland, May 11—Cangara bark quiet; new pack 7 @ 8c per lb.; Oregon grape root 4c.

Debris Is Boy's Tomb



CHICAGO HOUSE COLLAPSES

When Joseph Gautsch, 11, of Chicago, emulated "Jack the Giant Killer" of fairy tale fame, he dug his own grave. Chopping a timber on the first floor of an abandoned house, he loosened the supports and the structure collapsed on him.

Cooperative Cannery Out Of Debt and Paying Well Annual Report Reveals

Table with columns: Producers Co-operative Packing Company, Fruits received and handled during the season of 1924, and Prices. Lists various fruits like Gooseberries, Royal Anne Cherries, Black Cherries, etc., with their respective quantities and prices.

The Producers Co-operative Cannery & Packing Company is not only out of debt, but its stock which four years ago was appraised at \$40 a share now has an appraised value of \$114.43 per share.

Prunes—You doubtless know that the prune tonnage in this organization far exceeds the capacity of the cannery to can same during a normal crop year, nor do we believe that it would be good business to try to can all of these prunes even if it were possible with our present equipment to do so.

Quality pack—We wish to impress this thought in your minds: As growers your cannery is in competition with all other canneries of our country.

Rainfall ends drought threat Fifty eight hundredth inches of rain, starting to fall during the small hours of Sunday morning, continued incessantly throughout the day and into last night, eliminating all immediate danger of drought to farms in the Willamette valley.

By 7 o'clock Sunday morning 68 of an inch of moisture had fallen. Between that hour and 7 a. m. there exactly half an inch had been recorded in the official government instruments.

BETTER PRICES DIE ON FRUITS SURVEY SHOWS

Because of crop conditions in the Pacific Northwest growers of fruit commodities, except apples and pears, should be entitled to sell their fruits at higher prices this year, according to a bulletin issued by Melvin C. Goble, secretary of the Fruit Union of Seattle.

The bulletin places the membership crop in Oregon at 90 per cent of the normal and in Washington at 75 to 80 per cent. There should be an upward reaction in gooseberries the bulletin says. Royal Anne show a considerable less crop because of failure to pollinate and the prune crop seriously curtailed for the same reason.

Here are the facts as of May 3: Strawberries—Normal crop. (Ritterberg field not determined). Gooseberries—Normal crop that justifies a price of \$6 on No. 10 water. Spot cleanup sales at \$4 and \$4.50 illustrate a market that has gone too low and will not react upward.

Red raspberries—Oregon 75 per cent to 80 per cent crop. Washington, which produces three-fourths of red raspberries, will fall short of a 60 per cent crop.

Black raspberries—Close to normal. Loganberries—Oregon probably 60 per cent of normal. Washington not to exceed 25 to 30 per cent. Oregon canners hope to take care of moderate requirements. Washington very short.

Blackberries—Oregon about 50 per cent crop. With favorable weather, Washington may have 60 per cent.

Royal Anne—Considerable loss of fruit because of poor pollenization. Crop not heavy, possibility of serious shortage.

Prunes—Seriously curtailed by rains interfering with pollenization. Bartlett pears and apples—Substantially heavier than last year. With these conditions, the growers of all commodities except pears and apples should be entitled to sell their fruit at prices higher than last year.

DENNEY TO MAKE HEADQUARTERS IN SALEM AGAIN

Salem will be headquarters again this year for the black cherry shipping operation of Denney & company in Oregon, according to an announcement made by Roy Hurst, the company's traveling representative.

Plants will be established at Salem, Portland, Eugene, Sheridan and McMinnville. The company had contemplated handling 150 cars of cherries this year, but conditions now look, according to Hurst, that the tonnage will be somewhat less than that.

It is expected that shipping will start between June 25 and July 1. The tonnage already is largely signed up, Hurst states, but the company is taking on some more where available.

The price, he states, is yet indefinite. He reiterated the warning to growers to spray their cherries with the first spraying between the first and tenth of June, declaring that the company absolutely will not accept or handle any unsprayed cherries and growers who fail to spray will be out as far as Denney & company is concerned.

Yesterday's Scores. Portland 7-16; Seattle 12-7. Oakland 7-7; Los Angeles 4-3. Vernon 7-4; San Francisco 1-1. Sacramento 6-4; Salt Lake 3-6.

RIFF FORCES BEAR DOWN UPON FRENCH

The French feel they have strong reserves to continue the movement to a decisive end it is said a concerted movement will be made against the invaders along a sixty mile front with the objective of driving them into the mountains to the north.

The latest information gathered by the French intelligence service tends to confirm previous reports that Abd-el-Krim is planning to make his chief effort from the Ouzannan region, with the idea of outflanking the French left wing, cutting the Fez-Kenitra railway and taking the French line from the rear.

Reinforcements Rushed Paris, May 11—(By Associated Press)—The French reinforcements from Algeria, which have in a great part arrived in northern Morocco are being sent to strategic points along the front. At the same time operations continue with the object of relieving the French outposts still surrounded by Abd-el-Krim's Rifian warriors.

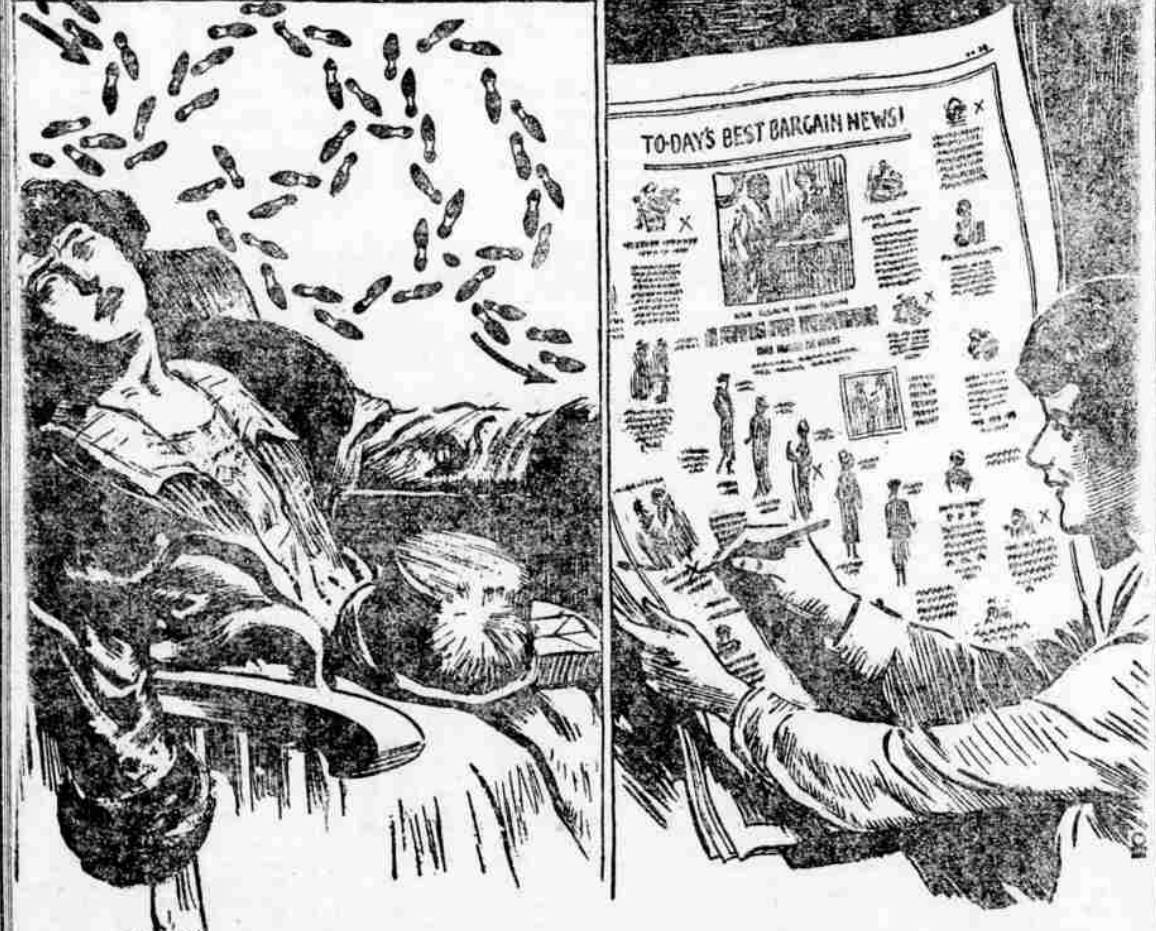
Military men here believe Marshal Lyautey will need 100,000 troops to drive the invaders out. The governor general's forces now number close to seventy thousand. Another 10 days are expected to elapse before the French counter offensive develops. As soon as

NEED SEEN FOR MORE OBSERVATION STATIONS

Washington, D. C.—Two additional observation stations, located probably in America and Asia, and accurate recording of the sun's changes of radiation over a period of years will be necessary, in the opinion of Dr. C. G. Abbot, assistant secretary of the Smithsonian Institution and director of its astrophysical observatory, to determine the exact extent to which weather depends upon solar changes.

Auction Sale Thursday, May 14th, 1:30 p.m. 1304 North Liberty Street. Six-hole range, large heater, folding davenport, oak extension table and 6 oak and leather seated diners—all like new, waxed oak library table, oak and leather Morris chair, Singer sewing machine, 2 white enamel 2-inch post beds complete, dresser, cot, new steel wheelbarrow, a lot of good garden tools, rugs, dishes, kitchen utensils, 50-ft. garden hose, tool box, bicycle, fruit jars, axe, shovel, rake, hoe, ironing board, and many other articles. Terms Cash.

W. R. WINSLOW, Owner, F. N. WOODRY, Auctioneer, Phone 511. "Woodry Buys Furniture for Cash or Sells on Commission"



Omit Wasted Footsteps

Shop Through the Columns of the Capital Journal

PLODDING, plodding, ever trodding—trips here, trips there, all about the town—and most steps wasted because Madame Shopper goes unguided. Really, it's the end of a wasted day. Madame Shopper is worn and weary—without having accomplished her quest.

Of course, you can't expect Madam Shopper to know of all the good things, the good stores and the good values in town—no, not unless Madam Shopper reads the advertising each day in the Capital Journal.

How much easier everything moves in one's shopping tour, when one has first consulted the advertisements. There are the best offerings of the day listed in an orderly manner, the special services rendered by each store—where the stores are located—just like buying from a huge catalog in your home.

You'll profit by shopping through Capital Journal Advertisements

Capital Journal logo and branding.

Salem Markets

Compiled from reports of Salem dealers for the guidance of Capital Journal readers. (Revised daily.)

- Wholesale prices: Grain: No. 1 white wheat \$1.43; No. 1 red wheat \$1.41 (stacked). Meat: Top hogs 15c; sows \$11c; dressed hogs 16c; top steers 6 @ 1c, sows \$14.00 @ 15.50; can new cows 1 1/2 up, 90 lbs. 14c; veal 2c; dressed veal 13c. Poultry: Springers 20c; light hens 15c; heavy hens 18c; old roosters 6c; dressed ducks 15 @. Butterfat 41c; creamery butter 44 @ 45c; eggs 20c; standards 22c; setlets 24c; milk \$2.20 cwt. Vegetables: California new potatoes 6 1/2c; old potatoes \$2.20 @ 2.25 sack; head lettuce \$2.50 @ 3.00 crate. Texas cabbage 1c. California bunch vegetables: carrots 20c; beets, turnips 90c doz; parsley 60 @ 80c; local radishes 40 @ 60; green onions 40c; grapefruit 10 @ 1.25; local rhubarb 2 1/2 @ 3c; tomatoes 15 @ 20c; asparagus 1 1/2 @ 2c; 1 1/2 dozen; new telephone poles \$3 @ 12c; new mustard greens 8c; California strawberries 20 box crate \$4.75; artichokes 75 @ 80c; oranges, small navel 75 @ 80c; new wax beans 22c; green beans 20c; wax beans \$3.00 @ 3.50; broccoli \$2.75; California cauliflower \$2.75; pineapples \$3.50 @ 4.00.