

GIBBONS VIEWS TUNNEY AT WORK SEES HARD TASK

St. Paul, Minn., March 28.—(By Associated Press.)—Tommy Gibbons, St. Paul heavyweight, whose next engagement probably will be a 15-round contest with Gene Tunney, American light heavyweight champion, expressed the opinion today that Tunney would give him a good hard fight. Gibbons witnessed Tunney's triumph over Harry Greb here last night, watching Tunney in action for the first time. He never took his eyes off the hard-punching New Yorker during the ten rounds of vicious fighting.

"Tunney is a big strong fellow and ought to give me a good hard fight," Gibbons said. "I like the way he boxes. He hits hard and accurately."

St. Paul, Minn., March 28.—(By Associated Press.)—Jimmy DeForest, matchmaker of the Polo Athletic club in New York expressed his confidence today that a 15-round contest between Gene Tunney and Tommy Gibbons would be closed within 24 hours. DeForest remained here today for another conference with Gibbons and plans to depart for Chicago to meet Eddie Kane, manager of the St. Paul heavyweight, in that city tomorrow. DeForest said Gibbons favors the proposal offered him and undoubtedly will urge Kane to accept the match with Tunney.

Gibbons plans to discuss the situation with Kane by long distance telephone today and then convey his rejection or acceptance to DeForest.

The New York matchmaker has offered Gibbons 30 per cent of receipts of the fight, which would be

set for June 12 at the Polo Grounds.

Billy Gibbons, manager of Tunney, said he and DeForest would have no trouble in coming to terms provided the percentage offered Tunney was reasonable.

CHAPMAN TRIAL DELAYED AGAIN

Hartford, Conn., March 28.—(By Associated Press.)—There was no session today in the trial of Gerald Chapman, mail looter and jail breaker, who is charged with the murder of a New Britain policeman, last October 12.

Judge Newell Jennings yesterday adjourned court until Monday, ordering the jury kept in the custody of the sheriff.

Much of the testimony so far has been designed to show intimacy between Chapman and Walter Shean, son of a Springfield, Mass., hotel owner, and the man who told the New Britain po-

lice that the mail bandit was the murderer.

Shean is alleged to have told the police he and Chapman broke into the Division and LeVentral department store in New Britain and looted two safes. When they were surprised by police, Shean escaped to be arrested a short time

later, but his companion was trapped and shot his way to freedom, killing Patrolman James Skelly.

Pacific Brotherhood Investors, \$1,000,000 to \$3,000,000 preferred stock and 10,000 to 30,000 shares non-pai value common stock.

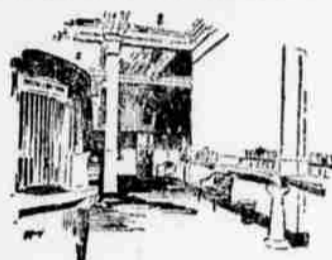
Civic Music Club Attraction Germaine Schnitzer

Concert Pianist

Grand Theatre, Monday, March 30, 8:15 p. m.

Prices \$1.50, \$1.00, 75c; Students \$1.00 Season Tickets reservations Monday, 8 to 11 a. m.

General sale thereafter.



Unusual Financial Problems

Consult us, here at the United States National, if you are confronted with unusual financial problems.

Our officers, with their seasoned judgment in serving the interests of this community over many years, are here to serve you just as much as the tellers at the windows. Ask them at any time whether your problems are large or small.

The United States National Bank Salem, Oregon.

TONE UP YOUR CAR

Now is the time of year to have your car gone over and put in driving condition for the summer.

All Work Absolutely Guaranteed

Salem Automotive Service

271 Chemeketa Phone 361 or 1949-J

Oregon Pulp & Paper Co. SALEM, OREGON

Manufacturers of Sulphite, and Manila Wrappings. Also Butchers Wrappings, Adding Machine Paper, Greaseproof, Glassine, Drug Bond, Tissue, Screenings and Specialties.

The Difference In Poultry Mash

Basis of 1000 Pound Mix

The Rich Low Fibered Correct Balanced Ration

150 lbs. oat grots equal to	2.22% Protein, .33% Fiber
100 lbs. corn equal to	1.00% Protein, .20% Fiber
300 lbs. Middlings equal to	4.44% Protein, .66% Fiber
300 lbs. mill run equal to	4.44% Protein, 2.64% Fiber
150 lbs. meal meal equal to	9.00% Protein, .33% Fiber
1000 mix	21.10% Protein, 4.16% Fiber

The Lean High Fibered Unbalanced Ration

Ground oats, 150 lbs. equal to	1.44% Protein, 1.50% Fiber
Corn, 40 lbs. equal to	.40% Protein, .08% Fiber
Middlings, 90 lbs. equal to	1.33% Protein, .20% Fiber
Mill Run, 570 lbs. equal to	8.44% Protein, 5.01% Fiber
Meal Meal, 150 lbs. equal to	9.00% Protein, .33% Fiber
1000 mix	20.61% Protein, 7.12½ Fiber

Why 7% of fiber when it should be 4%.

The rich proper balanced mash cost \$5.00 per ton more than the lean mash. A lean mash is made from whole oats; a rich mash from oat groats; the lean mash is short in corn and middlings, too much mill run; the high fiber comes from too much whole oats and mill run.

The quality of protein and the quantity of fiber determines the quality of the feed. Ten of the Cherro Poultry Feeds are under 5% fiber, and cost no more than lean high fibered feed.

Feed Best Feeds — At Your Dealer

Stop Coughs COLDS

FOLEY'S HONEY AND TAR

ESTABLISHED 1875

REFUSE SUBSTITUTES

USED CAR CORNER

246 State St.

Announcing Our Opening

In Our New Location 246 State St.

Room formerly occupied by the Kirkwood Motor Co., Monday, March 30

In this new location we are better able than ever before to serve our patrons and can assure even better service

IF YOU CAN SELL YOUR NEXT DOOR NEIGHBOR, YOU MUST HAVE SOMETHING GOOD

The fact that we have sold thirty-two cars within the radius of one block, four in one family, is evidence of the values we give and also of the service we offer.

TERMS—TRADES

OPEN

SUNDAYS and EVENINGS



SPECIAL OPENING OFFERINGS

Of Nearly New Fords

REMEMBER—We Give Ninety Days Free Service on All Nearly New Fords we sell—the same service that is Given on new cars.

HERE ARE A FEW OF THEM:

1924 Ford touring, cord tires, cannot be told from new	\$425	1924 Ford Tudor, lots of extras	\$650
1924 Ford roadster, cannot be told from new	\$375	1924 Ford Fordor, lots of extras	\$700
1924 Ford coupe, lots of extras	\$550	1924 Baby Overland, lots of extras	\$500
		1923 Ford coupe	\$335
		1923 Ford touring, a dandy car	\$290

NO SERVICE ON THE FOLLOWING:

1922 Ford Touring	\$165	1917 Buick Six	\$100	1918 Dodge Touring, in best of condition	\$200
1921 Ford Touring	\$150	1918 Ford Touring	\$ 70	A Sampson Truck	
1922 Ford Touring, dandy shape	\$210	1922 Ford Touring, no starter	\$ 90		
		1917 Ford Touring	\$ 55		

1925 License with every car.

One-Half Block West of Ladd & Bush Bank

