

### AUSTRALIANS FEAR GERMAN COMPETITION

Sydney, N. S. W.—A great deal of apprehension exists in Australia regarding the lifting of the embargo upon German goods which took place August 1. Three days before this date the steamer Malmio, which had loaded at Hamburg and was the first vessel to come here from Germany since 1914, landed a portion of her cargo at Melbourne.

A storm of public protest and threats of all sorts of action by the customs authorities ceased when it was discovered that the official origin of most of the cargo was Czechoslovakia, which made them immune from prohibition. Some German goods in the cargo were landed here on the day the embargo was lifted. They comprised pianos and toys, marked at prices considerably lower than those current here. Eleven other vessels were listed to load at Hamburg for Australian ports during August.

The federal conference of returned soldiers here adopted a resolution urging the federal government to pass legislation which would prevent the dumping of German goods and protect Australian and British manufacturers. Another resolution provided for a nation-wide campaign to pledge Australians to purchase Australian-produced goods exclusively.

### FOUR HIGHWAY CONTRACTS LET

Portland, Oct. 7.—A contract was awarded Friday by the state highway commission to Joplin & Eldon for the grading of the Alsea road, in Benton county. The section to be graded is six miles in length, and the estimated cost is to be \$204,659. The cost is to be borne by the state and Benton county on a fifty-fifty basis.

Other awards were: Madras-Wasco county line section, The Dallas-California section, grading 9.35 miles and surfacing 15.65 miles, Moore & Anderson, \$81,842. Hayden Creek-Keno section, Ashland-Klamath Falls highway, grading 12.12 miles, John Hamshre, \$114,997.

Bridge across White river near Tygh in Wasco county, Union Bridge company, \$18,507.

The following bids were referred to the engineer for certain adjustments:

Parkerburg section Haddon-Coquille highway, grading 4.73 miles, D. B. Plymale, \$73,662.

Koone creek-Hayden creek section Ashland-Klamath Falls highway: unit 1 (Jackson county), surfacing 12.34 miles, S. S. Schell, \$79,210; unit 2 (Klamath county), surfacing 9.83 miles, W. C. Stone, \$65,110.

### ALL GERMAN PRIESTS TO LEAVE NEW GUINEA

Sydney, N. S. W.—All German and Austrian priests will be compelled to leave the mandated territory of German New Guinea by 1923, according to a decision reached by the Australian authorities, which has been appealed by Rev. W. Gier, superior general of the Society of the Divine Word, who has just returned from the territory in the course of a world tour.

In New Guinea there are 21 priests and 19 brothers, mostly Germans, and Rev. Gier's appeal said that they had served faithfully for 26 years and that they desired to cooperate with the Australian government.

### INCREASE IN WAGES FOR COPPER WORKERS

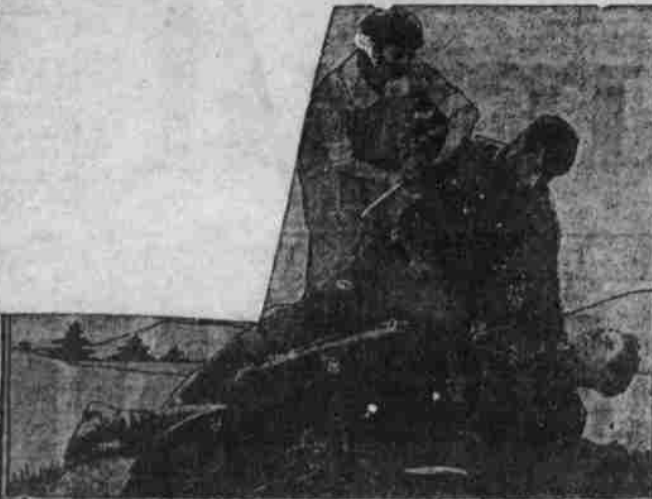
Houghton, Michigan.—The recent 15 per cent increase in wages granted employees of the Copper Range & Quincy Mining companies in the Michigan copper district, and the announcement that the Calumet & Hecla and Mohawk and Wolverine companies would shortly readjust wages, is interpreted as an effort on the part of the mining companies to hold together such forces as they now have and add to them if possible.

### Lingering Cough Relieved

"Had a bad cough for three years," writes H. E. Campbell, Adrian, Michigan. "Found no relief until I tried Foley's Honey and Tar." Lingering coughs, severe colds, croup, throat, chest and bronchial trouble quickly relieved with Foley's Honey and Tar. No need to suffer and take chances with neglected coughs and colds. Free from opiates—ingredients printed on the wrapper. Largest selling cough medicine in the world. (adv)

**SEAVEY-BELL Insurance Agency**  
412 Oregon Building  
William Bell Sheldon Sackett

### At the Liberty Starting Sunday



Scene from "Colleen of the Pines," starring Jane Novak

### Matelasse and Crepe—Both in Blue and Gray



WOMAN'S INSTITUTE Fashion Service

By MARY BROOKS PICKEN

HARMONY seems at once apparent in the combination of the two colors, seems more effective and pleasing than ever.

Matelasse, the blister-effect material, is used extensively for dresses, but it seems most appropriate when made up in a smart Jaquette. In this case the Jaquette is of blue matelasse embroidered with gray effect.

The business girl could make such a dress quickly, for the material eliminates much sewing. A good pattern and care in developing the revers and collar lines are the essentials.

The bow at the waist line may be omitted and a smart ornament or buckle used. Plain or plaid crepe may also be substituted for the matelasse with good effect.

Very pronounced is the departure from the regular-outlined brim this season, as evident in the irregularity of the gray felt brim of this model. Blue velvet is used for the soft balloon crown, and a Persian painted pin is thrust through the folds of the velvet at the right side.

A New York paper is informed that, having tired of politics, Padrowski will return to the concert platform next winter. What a pity so few of our own politicians are musical!

Berlin says that Germany is fully occupied in trying to pay her war debts. And the worst of it is that she will be occupied if she doesn't try to pay them.

**Geo. C. Will**  
Closing Out Piano and Phonograph Stock  
New Phonographs 1/2 Price.  
\$1 down, \$1 week up,  
Pianos \$39 up; terms  
\$5 down, \$5 month up.  
See Ad on page 4

**SQUARE IDEAL HARDWARE AND FURNITURE CO.**  
290 N. Commercial Street  
Phone 1650

### COUNTY CARE OF JUVENILES NOW IN ASCENDENCY

Washington.—County officers in many states are finding it sound economy to make appropriations for local care of dependent, defective or delinquent children, rather than to allow this work to be carried on by individuals or other private groups, according to a report by the children's bureau of the United States department of labor.

Administration of care for neglected, handicapped or delinquent children by local boards of citizens, employing trained workers aided by state boards is, according to the summary, the plan which is gaining approval in a constantly increasing number of states.

Within recent years laws requiring or permitting some form of county welfare organization of broad scope have been passed in Arkansas, Minnesota, Missouri, North Carolina and Virginia, while individual counties, private agencies, or state boards in Alabama, California, Florida, New Jersey, Pennsylvania and South Carolina are working out similar plans without special legislative action. County organization concerned mainly with the care of dependent children is found in Arizona, Indiana, New York and Ohio.

In the past, the report said, the development of preventative and constructive activities for children in rural sections usually depended on the willingness of some private individual or group to assume the financial obligations. The recent rapid growth of county welfare work has come about largely as a result of the development of state-wide plans, but a local organization is usually put into effect only after the county has indicated a desire for it.

### ADVERTISING OVERCOMES PREJUDICE OF PUBLIC

Chicago.—Advertising day after day, week after week, month after month—as the best method by which public utilities may overcome public prejudice, was strongly urged by W. H. Sawyer, president of the East St. Louis & Suburban Railway company, speaking here before the American Electric Railway association convention. "Few really going, progressive concerns in any other business spend less than one per cent of their gross on advertising, many spend 5 per cent," he declared. "The average street railway company can, to good advantage, as a business proposition conducive to the welfare not only of the company but of the community served, spend one per cent of its gross earnings on paid advertising."

**L. M. HUM**  
Care of Yick So Tong  
Chinese Medicine and Tea Co. has medicine which will cure any known disease.  
Not open Sundays  
153 South High Street  
Salem, Oregon. Phone 253

**Geo. C. Will**  
Closing Out Piano and Phonograph Stock  
New Phonographs 1/2 Price.  
\$1 down, \$1 week up,  
Pianos \$39 up; terms  
\$5 down, \$5 month up.  
See Ad on page 4



**HARBISON & CLEVELAND**  
Personal Service  
225 State St.

### What's New on the Market

BY FORREST GINN  
An exceptionally fine quality of Hubbard squash is now on the market selling at three cents per pound. The pulp is very dry and making it very favorable for a bake.

Cucumbers are beginning to be very scarce. This morning one of the stores had but a half bushel on hand. The price, according to the size, is between three and five cents a pound.

Tokay grapes, grown near Ashland, were on sale at several of the stores this morning at 15 cents a pound. Most of the Tokays which have been on the market have been coming from California.

The size of the heads of the cauliflower now on the market is a little larger than it was earlier in the season. The price averages about two cents per pound.

Starks Delicious apples, a fall apple, are now on the market. They are selling at \$2.00 per box, orchard pack and \$3.00 a box, fancy pack.

Pie melons, resembling in appearance and size a watermelon but the heart of which is solid and looks like citrus, appeared on the market this morning. Pie melon seems to be a misnomer for it is said that the heart is used for the making of preserves.

### BONUS BOARD IS LEGION TARGET

Bend, Or., Oct. 7.—A vote of confidence in H. J. Overturf and O. B. Hardy, recently summarily removed as appraisers for the bonus commission, until such time as a competent legal body shall decide upon their guilt or innocence of the charges made by the commission, was passed by Percy A. Stevens post, American Legion. The post refused to recommend anyone as successors of Overturf and Hardy.

At the same time the post took steps, through the appointment of a committee headed by Lynn B. Covert, to investigate fully the acts of the bonus commission as regards Deschutes county loan applications.

Members condemned the delay which has resulted in only 24 loans being granted out of more than 120 applications, and the practice of reducing the amount of loans by cutting down the appraisal, as has been done, it was declared, in virtually every case.

"See Naples and die" runs the proverb. The same thing is true of a bootleg joint.

**WANTED**  
Beef, Hogs, Calves, Sheep, live or dressed; also chickens, Eggs and Butter; best cash price paid.  
**PEOPLE'S Meat Market**  
155 N. Liberty Street.  
Phone 994

**GRUNERT**  
AUTO TOPS  
256 State St.

Authorized Ford Service  
Phone 298  
229 State St.

**SATISFIED**  
The best feeling in the world is to be satisfied with what you have. Your car can be repaired just right and that means satisfaction. Personal service and a real interest in your car troubles keep you happy.  
**HARBISON & CLEVELAND**  
Personal Service  
225 State St.

### DETROIT HEADQUARTERS AERONAUTIC INDUSTRY

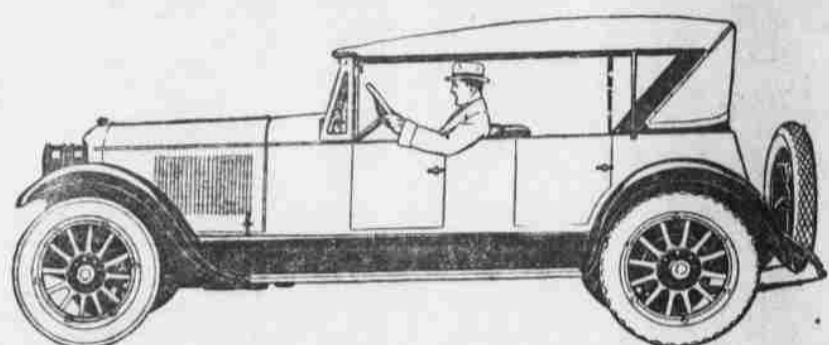
Detroit.—The Detroit district has become the aeronautical headquarters of the country with the assembling at Selfridge Field.

Mt. Clemens, near here, of one of the greatest arrays of American airplanes ever seen, in preparation for the Pulitzer race, world's speed classic, to be held October 14. Aerial experts for weeks have been perfecting the motors and at least a dozen of America's latest designs of aircraft will compete in the races making a three-day speed program. Entries include types from the army, navy and commercial fields.

"Wild bull attacks fliers" is other story says. We object to the undignified nicknames for our efficient traffic cops.

# PAIGE

The Most Beautiful Car in America



### The True Value of The Champion

A CAR that consistently outdistances any rival on the highway, irrespective of price or make, is surely a car of superb mechanical quality. This championship form is worth even more than the zest of victory in a brush between thoroughbreds, for better still, it is a guarantee of those enduring qualities that mean long life, untroubled mileage and economy of operation.

And there you have the secret of the extraordinary preference being shown for the Paige 6-66 in every corner of the land. The mighty 70-horsepower engine with its amazing speed and irresistible power, has won for the Paige the happy title of Master of the Highway, for here is a car that is always ready to meet all comers and will tackle the stiffest of grades with the utmost confidence.

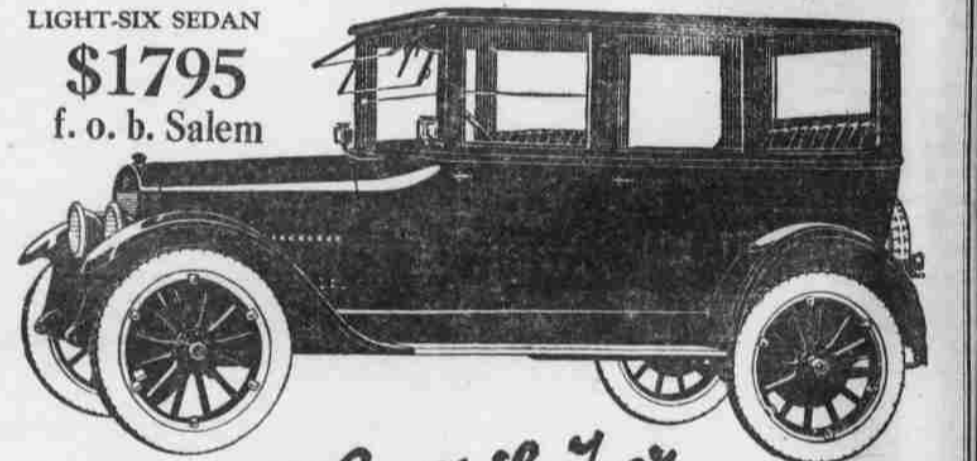
Other vital features of design unite with this superb power plant. The 131-inch wheel base, the 118 feet of vibrant spring leaf, the perfect balance, the deep upholstery assure the utmost of comfort and ease of riding.

In the New Series 6-66 there are numerous improvements that make this fine car still finer. Examine any 6-66 model, ride in it, compare it with any other car in performance and equipment. Then look at the price-tag and we are content to leave the decision to you.

The complete Paige-Jewett lines of six-cylinder passenger cars offer a selection of thirteen models priced from \$995 to \$3350. The complete line of Paige trucks meets every hauling need. They are sold and serviced by Paige dealers everywhere.

# VICK BROS.

Trade Street at High, Salem, Ore.



### Let Us Show You the Difference!

Vibration is destructive. It shortens the life of a car. It takes the pleasure out of riding because it causes rattles, squeaks and other irritating noises. Vibration is particularly annoying in closed cars. There is no perceptible period of vibration in the Studebaker Light-Six at any speed. This is due in part to Studebaker's method of machining the crankshaft and connecting rods on all surfaces. No other car, at anywhere near the price, follows this practice. Lack of vibration and the quiet, smooth-running motor find quick approval from everyone who rides in the Light-Six Sedan. And every driver is similarly enthusiastic over the way it throttles down to a walking gait in high gear—and the quick response that follows the touch of the accelerator. Aside from its mechanical excellence, the Light-Six Sedan is notable for its sterling coach work. The substantial body, like the chassis, is built complete in Studebaker plants. Materials and workmanship are of highest grade. Long, semi-elliptic springs and deep, restful, nine-inch cushions afford genuine comfort. Upholstery is of a rich, mohair velvet plush—good-looking and durable. Today's price is the lowest at which the Light-Six Sedan has ever been sold. The name Studebaker on your car is the best protection you can have!

MODELS AND PRICES—f. o. b. Salem

LIGHT-SIX	SPECIAL-SIX	BIG-SIX
5-Pass., 112" W. B., 40 H. P.	5-Pass., 119" W. B., 50 H. P.	7-Pass., 126" W. B., 60 H. P.
Touring ..... \$1190	Touring ..... \$1525	Touring ..... \$1935
Roadster (3-Pass.) \$1190	Roadster (2-Pass.) \$1495	Speedster (4-Pass.) ..... 2075
Coupe-Roadster (2-Pass.) 1450	Roadster (4-Pass.) 1525	Coupe (4-Pass.) 2650
Sedan ..... 1795	Coupe (4-Pass.) 2195	Sedan ..... 2850

Cord Tires—Standard Equipment

**Marion Automobile Co.**  
Open Day and Night Salem, Ore. Phone 362  
THIS IS A STUDEBAKER YEAR