

Automobile, Truck, Tractor and Highway News

Bids On 15 Projects Are Next

Coming Meeting of Highway Board To See Much Work On Roads Launched

The highway improvement program which the state highway commission will take under consideration at its meeting in Portland, April 5, includes 64.98 miles of grading, 34.76 miles of paving, 31.2 miles of overcrossing, three bridges and one overcrossing. The work is divided into 15 separate projects as follows:

One reinforced concrete bridge over Deer creek on the Grants Pass Crescent City highway in Josephine county.

One reinforced concrete bridge over Wolf creek on the Grants Pass Crescent City highway in Josephine county.

One bridge over Altamont canal on the Klamath Falls-Lakeview highway in Klamath county.

One over crossing of the Oregon Central & Eastern railway near Dairy in Klamath county.

Grading 17.05 miles of the Prineville-Ochoco forest section of the Ochoco highway in Crook county.

Grading 14.53 miles of the Burns-Sage Hen hill section of the Central Oregon highway in Harney county.

Grading and graveling 14.25 miles of the Ontario-Weiser section of the Old Oregon Trail in Malheur county.

Grading 12.75 miles of the Kamela-Higard section of the Old Oregon Trail in Union county.

Grading 6.3 miles of the Higard-La Grande section of the Old Oregon Trail in Union county.

Graveling 8.4 miles of the Wallowa-Canyon section, La Grande-Enterprise highway, Wallowa county.

Grading and graveling 12 miles of the Wallowa-Lostine section, La Grande-Enterprise highway, Wallowa county.

Paving 14 miles of the Wolf Creek-Grave Creek section of the Pacific highway in Douglas and Josephine counties.

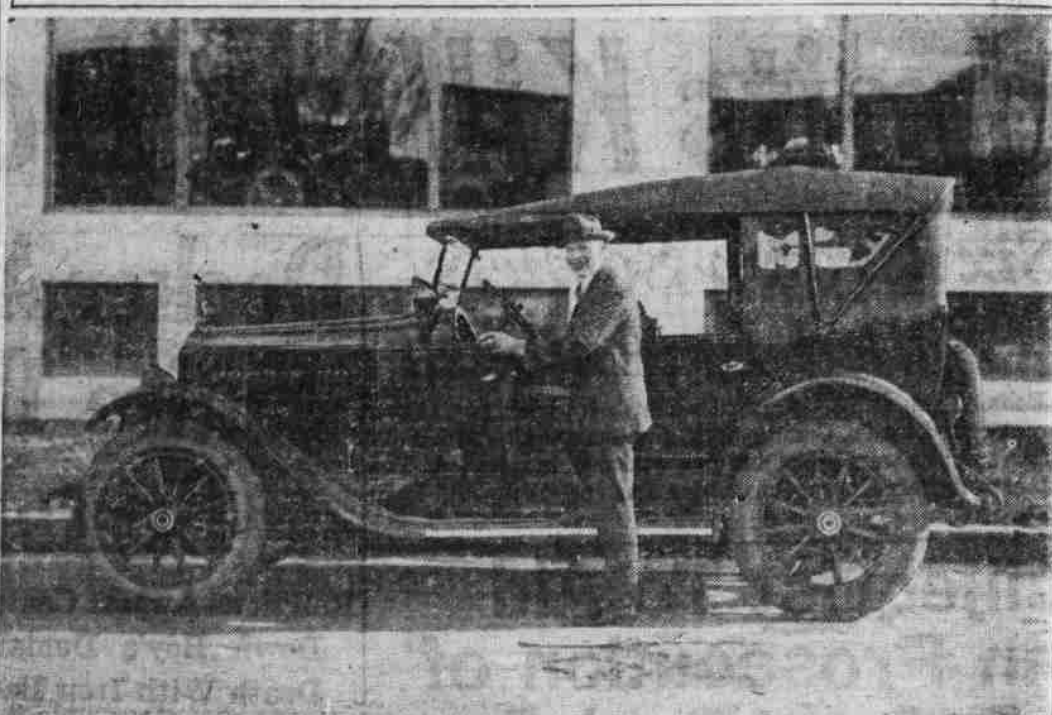
Paving 12 miles of the Oakland-South section of the Pacific highway in Douglas county.

Paving 7 miles of the Drain-Anlauf section of the Pacific highway in Douglas county.

Paving 9 miles of the Walker-Goshen section of the Pacific highway in Lane county.

Tractor Pushes Lawn Mower. A garden tractor has been designed that pushes three lawn mowers in front of it so that the grass is not flattened before being reached by the knives.

First Packard Sold In Salem



The above is of B. B. Robb, with his new Packard Single Six. Note the pleasing appearance, but who would not smile if they owned a Packard. Vick Brothers sold their first Packard to Mr. Robb, after taking the Packard agency for their line of cars and trucks. Mr. Robb says the new car has everything beat for easy-riding and ease of operation.

Little Brother of Studebaker Tribe Sets Four Records

Officially deputized by the post-office department to carry mail, a stock model of the Studebaker Light-Six recently established a record, the authenticity of which is beyond question between San Francisco and Los Angeles that is likely to stand for some spell of time, according to word received by the Marion Automobile company, Salem distributors of the Studebaker.

In truth, the Light-Six established four new records while acting as a mail car. In brief, here they are: Made the round trip from San Francisco to Los Angeles, 844.5 miles, in 21 hours, 23 minutes elapsed time—a new record.

Made the one-way trip over the Coast Route, 453.7 miles, in 10 hours, 12 minutes, 30 seconds elapsed time—a new record.

Made the one-way trip over the Valley Route, 411.1 miles, in 9 hours, 15 minutes, 50 seconds elapsed time—a new record.

Beat "The Lark" fastest express train between San Francisco and Los Angeles, by 3 hours, 47 minutes 30 seconds—a new record.

Challenging all comers to better the above marks, the Studebaker

people are pointing with considerable pride to the records as proof of their claims of speed and stamina for the Light-Six. That the little brother of the Big-Six and the Special is able to make long continued runs entirely free from mechanical trouble was amply demonstrated when the Little-Six smashed these records on two trips, the second started immediately after the first was completed.

Extension Arm for Spotlight. The awkwardness, and sometimes danger, of having to lean over the steering wheel to adjust the wrenched spotlight, is responsible for the production of a new automobile accessory. It consists of a small telescoping arm, with clamp and universal joint at one end, and a ball-shaped handle at the other. Clamped to the spotlight shank, the joint and telescoping arm are adjusted so that the ball handle always is within a few inches of the steering wheel.

There is no legal form of human slavery in any Christian country; it exists in mild form in most of the Mohammedan countries.

Lebanon-Albany Highway Viewed

Albany, Or., Mar. 18.—Members of the state highway commission en route over the Pacific highway the length of the state north and south, halted in Linn county Wednesday long enough to make a tour to Lebanon and back to Albany for the purpose of viewing the two most commonly traveled roads between the two towns.

Recently delegations from Albany and Lebanon called on the highway commission with a petition for the improvement of the road between Albany and Lebanon. The delegations had with them a signed statement from the Linn county court to the effect that the improvement cost of the Albany-Lebanon road. The highway commission at that time promised the delegations that when the trip south was made the commission would drive over the two routes between Albany and Lebanon. It was understood today that the matter of the location of the road between Albany and Lebanon to be approved by the county and state cooperating will be left to the county court.

Can Carry Additional Passengers. An English automobile of the roadster type can carry two additional passengers in auxiliary seats on each side in front of the rear fenders.

Park-to-Park Highway Map Is Distributed

In anticipation of heavy travel this summer over the National Park to Park highway, the association furthering the movement is preparing a pamphlet in which points of interest of this and other communities on the route will be mentioned for the guidance of road tourists. Side trips will be featured.

An inquiry sheet has been sent to every chamber of commerce or commercial club for information concerning drives, auto cops and other things in which the traveler is interested. This slogan is passed along to the towns: "Help the auto traveler linger a little longer in your community."

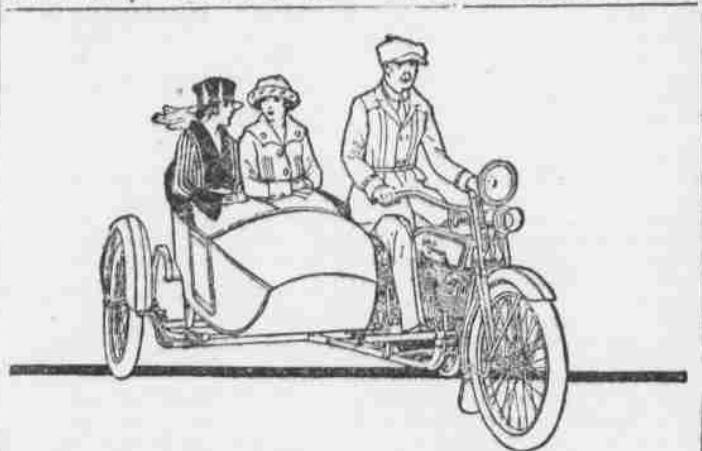
Inquiries are coming to the general offices in Denver, not only from the east, but also from Continental Europe, as to the wonders to be seen on such a trip. The

principal of a private school in Holland asked for details of the trip in the expectation that some of the wealthy families of the children might desire to make the journey. The road pamphlet will be of equal importance and service to all cities and towns, and for this reason Salem is to be allotted a certain number for distribution, according to the plans of Gus Holmes secretary-manager of the association. He believes Westerners are going to use the Park to Park highway, or part of it, to reach the particular transcontinental highway they desire to travel over in going east.

Likewise, the easterner, or the southerner, in choosing any one of a dozen transcontinental highways to journey westward, comes in contact with the Circle Highway on the eastern slope of the Rockies. The road pamphlet will convince him, in the estimation of Mr. Holm, that a visit to one or more of the national parks is feasible and desirable.

Tourists may be induced to stay over here for another day or two through this plan.

JOURNAL WANT ADS PAY



Harley-Davidson Motorcycle—The Key to New Pleasures

There is something like magic in the way the Harley-Davidson Motorcycle changes your pleasure from the common to the most fascinating, causing you to wonder how you could have denied yourself this new happiness for so long a time.

It is the key to new pleasures, new scenes, new interests. It isn't a hobby, but a healthy happy habit.

Whether or not you are now ready to buy a Harley-Davidson, drop in and see the new models. It is well to know, when you are ready, which machine you like best and which will serve you best. Come in.

Harry W. Scott

"The Cycle Man." 147 S. COMMERCIAL STREET. SPECIAL THIS WEEK — Several good buys in Rebuilt Used Machines. Come in and look them over. Pay as you ride.

Auto Driven by Air Propeller Saves Gasoline

Paris, March 19.—A light car which derives its motive power from an 8-horsepower engine, driving a propeller, is the invention of Marcel Levat, a French airman.

The "Helica" is built with a streamline body, something like that of an aeroplane. Driver and one passenger sit side by side and are well sheltered from the draft of the propeller.

The engine is an 8-horsepower, two-cylinder, air-cooled, and enables the "Helica" to attain a speed of fifty miles an hour. Gas consumption is well over 70 miles a gallon. The propeller, the diameter of which is less than that of the car, is protected by a frame-

work so that careless people not blunder into it when it is revolving.

By means of this method gear change is done away with, extra power for gradients being obtained by opening the throttle, so gaining more propeller power on the streets of Paris.

The car has already been tested on the streets of Paris.

According to careful tests three hours of close study cost a worker more than ten hours of hard physical labor.

WILLARD DEGGE & BURELL AUTO ELECTRICIANS HIGH STREET



The Starting and Lighting Battery That Goes Into Your Car to Work

THERE is no "perhaps" about the "Exide." Thirty-two years of battery-building experience guarantees the enduring rightness of its every detail. It is built to perform—smoothly, powerfully, dependably. "Exide" Service is equally practical.

The next time you require battery service, visit our "Exide" Service Station—or, better still, call for a Free Battery Test regularly.

In a little while you will come to appreciate that "Exide" Service is really an important step toward more efficient and economical operation of the battery in your car.

R. D. Barton

171 S. COMMERCIAL STREET Phone 1107. Salem, Oregon

Ford

THE UNIVERSAL CAR

MARCH IS PROVING A RECORD BREAKER

We have delivered 37 Ford cars and 7 Fordson Farm Tractors the first 15 days of March. We have unloaded 3 carloads this week and have 2 carloads that should arrive the first of next week. The wires are kept hot in our endeavor to get extra cars. The factory output is strained to its limit, which means, from now on, we cannot get any extra cars over our regular allotment.

PLACE YOUR ORDER TODAY

Spring deliveries of Ford Cars have never been certain. They should not be depended upon. Demand has always been greater for Ford cars than the supply or production. If you would be sure of having a Ford car, place your order today.

DON'T WAIT—Even next month is an uncertainty. Only a limited, specified number of cars has been allotted to this territory. The allotment cannot be increased, because the demand all over the country is greater than the supply or production. Place your order today and you will be one of those who is sure of a Ford Car out of our allotment.

It's First Come—First Served. All orders are filled in rotation. So, if you would be forehanded, if you would be certain of having a Ford car when you want it —

BUY THAT CAR NOW.

Insist on Genuine FORD Parts.

Valley Motor Co.

Insist on Genuine FORD Parts.

Their Ability to Serve Decides Your Preference

A man chooses a certain doctor, lawyer, or banker because of his ability to perceive and meet personal requirements.

Your automobile dealer is just as important, for no car has yet been made that can embody the human intelligence, knowledge and skill which is expressed in the automotive world by the word "service."

This house is strong for service.

CHEVROLET

Salem Automobile Co.

F. G. DELANO
SALEM
Phone 97

A. I. EOFF
DALLAS
Phone 14