

### Growers Set Prune Prices

(Continued from page one)

Differential	30-40	50-50	60-60	70-70	80-80	90-100
30-40	14c	12 1/2c	11 1/2c	10c	9c	8c
50-50	15c	13c	11 1/2c	10c	9c	8c
60-60	16c	14c	12 1/2c	11c	10c	9c
70-70	17c	15c	13c	11c	10c	9c
80-80	18c	16c	14c	12c	11c	10c
90-100	19c	17c	15c	13c	12c	11c

ple which will illustrate the present condition. It was said by one of our sales representatives that you could not sell a buyer a twenty dollar gold piece for five dollars because he would not be able to borrow the five dollars with which to pay for it. While the above statement is far fetched it illustrates the condition very well.

"It was deemed by the association at the present time as not psychologically right for nominating opening prices. However, during the month of September and the first half of October wholesalers have their salesmen out selling the retail trade on dried fruits for future delivery and in order to get Oregon prunes quoted to the retail trade it was deemed advisable to name the prices no matter what conditions were unfavorable. As stated above, the association's prices were cut by the independent packers as soon as they were named and the association was forced to meet this decline. Prices have since been cut some more and are now one cent under the association's opening prices and one and a fourth cents on 40-50s. Owing to the several declines, buyers are not in a buying mood. When the buyers, however, begin to buy, the association expects to get its share of the business. It has already gotten some business, and owing to the fact that it has probably the best selling organization of any dried fruit packers in the northwest it will be able to take care of its members as well as the independent growers are being taken care of. If the present crop was under such control that it could be sold now and then as the trade needs the fruit from time to time during the next eight or nine months a very much better control of the market could be had and conditions would remain firm to the better satisfaction of not only the growers but also the trade."

Differential	30-40	50-50	60-60	70-70	80-80	90-100
30-40	15 1/2c	13 1/2c	12c	10 1/2c	9 1/2c	8 1/2c
50-50	16 1/2c	14 1/2c	12 1/2c	11c	10c	9c
60-60	17 1/2c	15 1/2c	13 1/2c	11 1/2c	10 1/2c	9 1/2c
70-70	18 1/2c	16 1/2c	14 1/2c	12 1/2c	11 1/2c	10 1/2c
80-80	19 1/2c	17 1/2c	15 1/2c	13 1/2c	12 1/2c	11 1/2c
90-100	20 1/2c	18 1/2c	16 1/2c	14 1/2c	13 1/2c	12 1/2c

grower had the association named to the prices they were cut one half pound by independent packers forcing the association to its price. Since that time declines have been made on the prevailing quotations one cent per pound on the association's opening prices with the exception of 40-50s Tuesday were cut another cent by one of the independent packers. The result this price cutting has not any amount of sales but has led into the buyers a feeling of certainty which has caused them to sit back and wait for developments.

Inside information on the association opening was based on the fact that the California Prune association announced its opening prices on a basis as given above. Independent packers previous to that had been asking such stiff prices as to practically stop business entirely and the trade was showing an advance on the prices which are going to be very scarce this year due to extreme heat they had some ago, but the prices on the hand are lower on the sizes than last year's quotations at which prices last year's crop was not entirely cleaned up. California crop this season still estimated at between 200 and 300 million pounds. Owing to the fact that a heavy proportion of the California crop was sold firm at opening prices the California association has sold a proportion of its crop. However, the business which has been since the opening prices has nominal owing to the unfavorable conditions which exist in the east but which the present time have not so much affected western Oregon to the far sighted policy of banking interests of this state. It is significant that the additional brand of the California Prune, known as Sunsweet, were entirely sold out on the first day. They have another brand, however, which they do not intend to sell under the brand they are offering at present.

Export Conditions  
To date there has been practically no export business done except a few small sales of California prunes. This is due to the exchange rates still prevailing also to the fact that prunes being offered out of the new crop of 1920 are on a basis of 60 shillings per hundred which is equivalent to 100 shillings per hundred, which after deducting transportation freight, and reducing the rate from English cwt, which calculated on the basis of a ton, to American weights, are calculated on the basis of 40 pounds per ton of fruit, an average of \$14.33 per hundred pounds of 50-50s packed in 10 pound boxes, or equivalent about 11 1/2c bulk basis when sold down to a regular basis which prunes are sold in the United States. You will note that the price fixed by the association coincides with the above and it was anticipated that a maximum basis on the export sales could be made in present conditions of exchange. Should exchange conditions improve an improvement in the export business would be noted in the export business.

Sugar Conditions  
On account of the enormous increase in sugar prices during the year the sale of Oregon prunes has been materially affected and also the fact that enormous profits were figured on prices made on Oregon prunes there still remaining some two weeks ago in eastern markets somewhere between four and five million pounds of unsold Oregon prunes out of last year's crop. There has been some movement in these prunes, however, since that date and the quantity is being gradually cleaned up before the new crop arrives. In the meantime the price of sugar has broken and this should have a favorable influence upon sales this season.

Canned Goods Situation  
"Owing to the extremely heavy costs of all the commodities which enter into the production of canned goods there has been a curtailment of the part of canneries of their anticipated pack of canned goods. This has also been true of the house wife who has been unwilling to pay the extreme high price asked for fresh fruits and the high price asked for sugar, with the result that home canning has been very much diminished in the past season. This, of course, will have the effect of diverting part of the normal consumption of canned goods into dried fruits, but will not take place until the supplies of canned goods begin to get low which will probably be after the first of the year.

Oregon Crops and Sales  
A careful investigation and summary of sales made up to the time of opening prices of the Oregon Growers' Cooperative association indicated that there has been not to exceed between four and five percent of the expected fifty to sixty million pounds of prunes in Oregon for this year's crop sold. Prospects for the Oregon crop are estimated lower than at our last writing on August 9 at which time the packers have been estimating as high as eighty million pounds. These estimates now have been generally reduced to anywhere from forty five to sixty million pounds for Oregon and Clarke county, Wash. Since the rain started a few days ago there has arisen a fear on the part of the growers that the rain would be followed by severe cracking and brown rot of the prunes. That this is likely to be the case is shown by the fact that in a number of orchards cracking has already begun and while the damage so far is not heavy it will increase as the prunes approach maturity. It does not take much brown rot or cracking to reduce the crop considerably as it was shown last season.

Financial Conditions  
"The story to the whole present situation lies in the condition of finances in the east. For two months past there has been practically no buying done except from hand to mouth by the wholesalers in the larger centers and by most of the wholesalers in the smaller districts. This has been due to the fact that wholesalers have been cut severely on their credit and would not be able to pay for goods on arrival if they did not adopt this attitude. Regardless of prospective profits wholesalers are maintaining this attitude everywhere in order to be able to operate their business within their line of credit allowed them by the banks. Many wholesalers are trying to operate and buy supplies to cover the whole coming year's operations on 40 per cent of their normal credit at the banks. It will be readily seen that under these circumstances prospects for selling any kind of goods are very poor throughout the whole United States and Canada where there have not been more than a half dozen buyers who have been interested in the prune quotations and these have not been active. To give you an exaggerated exam-

### Tonight Only—Grand Theatre



May Keefe and Ruth Graft in "Frivolities of 1920"

### MacSwiney no Worse Declares Prison Doctors

London, Sept. 14.—Terrence MacSwiney, lord mayor of Cork, was appreciably weaker this morning as a result of his hunger strike which he is continuing in Britain, says a bulletin issued by the Irish self determination league. It states MacSwiney had a very bad night but he was still conscious and his mind was active. Today is the thirty third day of his hunger strike.

Reports to the home office from prison physicians who are attending the lord mayor did not agree with the bulletin issued by the league. They reported there was virtually no change in MacSwiney's condition and that he had passed a restless night.

### Cobb Believes "Lava Bear" of Extinct Race

Bend, Or., Sept. 14.—That the lava bear, provincially known as the "band lapper" inhabiting the lava flow in the Fort-Rock country, may prove to be the sun bear, believed for the last 100 years to be extinct, was the theory advanced by Irvin S. Cobb today on his return to Bend after a week's trip to the south, in the course of which the humorist has hunted bear and deer and fished in all the lakes along the way. Incidentally, Mr. Cobb lost 20 pounds of his former weight.

Mr. Cobb said today that he believed a diminutive species of grizzly found in the Seven Devils country in Idaho and the dwarf bear of the Fort Rock lava flows are identical and are the last survivors of the sun bear, a species formerly found over a large territory in the lava flows of California and Oregon. He is eager to get specimens of the tiny grizzly and hopes that the attention of the Smithsonian Institute may be sufficiently aroused to start a more scientific investigation of the subject than he has been able to make.

### Cox Cancels Outside Dates

San Francisco, Sept. 13.—The throat affection from which Governor James M. Cox of Ohio is suffering has necessitated the cancellation of all of his outdoor speeches in California and the substitution in their place of indoor addresses, according to an announcement by the western department of the Democratic national committee here today.

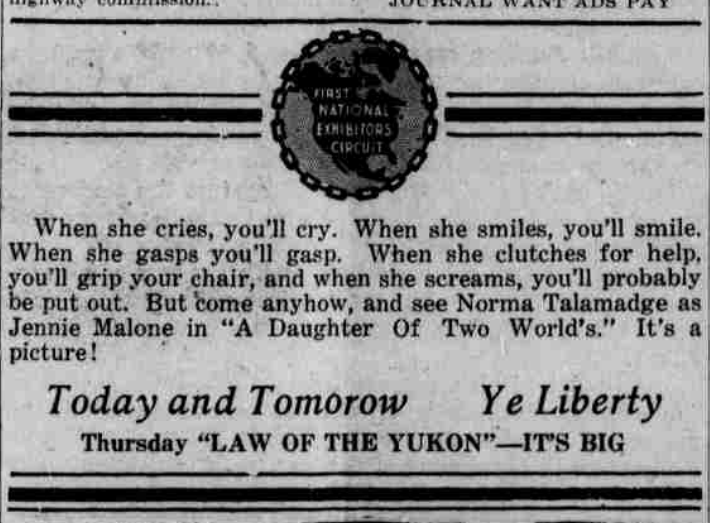
Information regarding the change was received here yesterday by United States Senator Key Pittman of Nevada, western director.

### Explosion On Jap Cruiser Is Fatal To Five

Tokio, Sept. 14.—Lieutenant Hamada and four members of the crew of the Japanese battle cruiser Haruna were instantly killed when a shell being placed in one of the heavy guns prematurely exploded off Hokokado today. One petty officer and nine sailors were fatally injured, while two others were slightly wounded.

Vice Admiral Prince Fushimi was aboard the warship when the explosion took place but escaped injury. It is understood the damaged ship was confined to one of the turrets of the ship.

### Today and Tomorrow Ye Liberty Thursday "LAW OF THE YUKON"—IT'S BIG



**Studebaker**  
BIG-SIX

You are familiar, of course, with the beautiful lines of the BIG-SIX, because you see so many of them. There is beauty, as well, in the comfort and performance of this great car—as a ride will quickly convince you. Let us give you a demonstration.

60-H.P. detachable-head motor  
Intermediate transmission; 128-hub wheels, leaving ample room for seven adults.

All Studebaker Cars are equipped with Good Tire—another Studebaker product.

"This is a Studebaker Year"  
MARION AUTOMOBILE CO  
Salem, Ore.

**There's no waste to Grape-Nuts**  
and it saves sugar, for it contains its own sweetening

No cooking is necessary and the pleasant flavor of this wheat and malted barley food is equalled only by its economy.

Grocery stores sell Grape-Nuts.

**Dandruff was killing my hair**

My head itched unbearably and my hair was coming out by the handful. A few applications of Wildroot loosened and removed quantities of dandruff—the itching stopped. Today it is thicker and more beautiful than ever.

Wildroot Liquid Shampoo or Wildroot Shampoo Soap used in connection with Wildroot Hair Tonic will hasten the treatment.

**WILDROOT**  
THE GUARANTEED HAIR TONIC

For sale here under a money-back guarantee.  
Daniel J. Fry, druggist.

**The Joy Of A Perfect Skin**

Know the joy and happiness that comes to one who possesses a skin of purity and beauty. The soft, distinguished appearance it renders brings out your natural beauty to its full extent in less than 70 days.

**Oriental Cream**

### Prunes Not Hurt But Sunshine Is Need of Growers

Reports from Marion and Polk county prune growers indicate that prune orchards of both counties have in a large measure, escaped serious damage from the recent rains. This is accounted for by the fact that the fruit is just beginning to ripen.

In a few orchards, cracking was reported Tuesday, but not to a sufficient extent to affect the crop if promised good weather prevails. A bulletin issued Tuesday by the Oregon Growers' association reports slight injuries and forecasts heavy losses from cracking and brown rot, unless sunny weather prevails during the remainder of the season.

Max Gehlar, Polk county grower, reports that his county prune orchards are in excellent condition. A similar report has been received from the L. R. LeFurgy orchards near Monmouth. The LeFurgy holdings are among the largest in the state and visitors report that a very heavy yield is expected.

Many growers are expressing concern as to the ultimate effect of continued rains, the less optimistic predicting a fifty per cent loss.

Suit has been filed in the circuit court of Klamath county to restrain the county court and state highway commission from constructing the Klamath Falls-Merill road.

### German Admits Strike Ended

Chicago, Sept. 14.—Admission of John Grunau, leader of striking switchmen, yardmen and engine-men in the Chicago switching district that the walkout had ended was made public today. At meetings called by the men last night majorities were reported in favor of returning to their former positions.

Grunau's announcement that at Sunday night's meeting the men had decided to continue on strike by a majority of 800 was followed by charges on the part of the strikers of "bribery, trickery, stacked ballot boxes and intimidation."

Jellyfish sometimes attain a diameter of two feet.

# SHOES

## For College and School Men

*In that classy, snappy style that are wanted and at prices that mean business for us and attractive to you. The Brogue Pattern in brown, new English last, Goodyear welted, oak soles, you will like them immensely at \$8.75*

*In English and modified English lasts, brown calf welt soles, some with rubber heels and new vamp patterns. Will suit and satisfy you in service, looks, fit, etc., from \$12.50 Down to \$8.75*

SEVERAL NEW NUMBERS

*Round toes in browns and blacks in nice designs and fine fitting lasts at from \$12 Down to \$6.85*

*Plenty of Heavier service or hiking shoes in best lasts and consistently low costs.*

*Your approval and patronage is worth more to us than big profits. You must be satisfied.*

At the Electric Sign "SHOES"

**The Bootery**

## Now Is the Time to Buy a Tractor

While bankers have generally tightened up on loans, they recognize the value of the Tractor on the farm, and are generally open to assist the progressive farmer in its purchase. This of itself clearly shows the advantage of owning a Tractor.

The banker knows a Tractor is in itself necessary equipment for the farmer, and he further recognizes the fact that the farmer who buys a Tractor is alive to its possibilities and will increase his production at once.

The Fordson Tractor has proven itself to be not only only dependable, but the cheapest Tractor on the market, in its initial cost and up-keep.

POWER FARMING so far outstrips the old methods, that compassion becomes odious. One spells a bare living coupled with drudgery and many sacrifices—the other, good profits, with time for pleasure and attention to the business end of the farm.

ASK A FORDSON OWNER, HE KNOWS WE CAN MAKE A FEW IMMEDIATE DELIVERIES, although our Tractor orders are coming in faster than we expected; but the Factory assures us we may depend on shipments we did not expect until next month. Act today and join the army of progressive farmers.

# Valley Motor Co.

Power Farming Specialties