

### Scouts to Leave For Camp In Wild Mountains In June

On the morning of Monday, June 14, the Boy Scouts' special train will leave Salem, having on board the majority of Salem's 300 Boy Scouts who are bound for the annual summer camp. The train will not stop this side of Eugene, the boy will stage a parade and show Eugene just what a good bunch of Scouts look like when they are on their way to a good camp. The train will reach Oakridge, Or., the terminus of the railroad and the starting point of the hike, about noon and after dinner has been served, the Scouts will hit the trail for camp.

The Boy Scouts summer camp is in one of the prettiest spots in the Cascade Range, just 13 miles southeast of Oakridge. It is situated on the banks of Salt Creek within a mile of the famous McCredie hot springs, where over 15 small geysers pour forth their hot liquids in the formation of many peculiar natural monuments. Here there is a wonderful swimming pool which has been placed at the disposal of the Scouts, and under the direction of experts in swimming, quite a number of Scouts learn to swim each year. The water in the pool is ever changing, and is heated by the hot springs.

A number of government experts will visit camp this year and give the boys illustrated lectures on interesting topics, including wild life, forestry, fire prevention, camping and kindred subjects. Movies have been arranged for to entertain the camp and every boy is looking forward to these features with a great deal of eagerness.

Not far from the camp is Salt Creek falls, being over 290 feet high, reported to be the prettiest falls west of the Rocky mountains. Other points of interest near the camp include the numerous lakes in that vicinity, Fern Flat, Papoose Rock, Bunchgrass Ridge and Heckletooth mountain. Each of these bear a wonderful scenic or historical setting and from the many quaint and picturesque by-paths among the canyons for along the cliffs, one can find many pretty views such as Verdum Rock and Diamond Peak.

The many mountain streams and lakes in the vicinity of the camp afford splendid opportunities for the fisherman, and breakfasts of rainbow trout are not at all uncommon on the map. The camp will last for 30 days, starting June 14 and will be under the direct supervision of Scout Executive Harold L. Cook and directed by the committee of camping of the local council, of which T. E. McCroskey is head. Mr. Cook will be assisted by a corps of scoutmasters and assistants of unquestioned character and ability, thus enabling the committee of camping to pledge safe conditions, able and ample supervision and a fine quality of leadership for the boy-leadership pledged to his welfare.

Never has Salem so baly prepared for her boyhood, and every body in the city is urged to avail himself of this camp opportunity.

### Unique Emblems of Flowers Fast Being Completed

Being in the garden plots that are being placed on the court house square a lasting monument of beauty equal to the state hospital grounds that has been called by some the most beautiful garden spot in the west, many citizens are commenting favorably on the efforts of J. W. Maruny and his assistants, who are arranging the Shrine and Elk emblems on the High street side of the square. One of the flower beds has already been completed; but because of the failure to procure the needed 1200 purple petunias for the Elks emblem, work on it has been delayed. Efforts to get the petunias in Portland failed, Mr. Maruny being able to procure only 500 of the desired plants. Plans are being made to substitute some other plant for the petunias and proceed with the work.

It is the plan to have the emblem in bloom when the distinguished Elk and Shrine visitors come to Salem for their convention meets this summer. The Salem Floral society, the organization responsible for the unique

and pretty flower beds, is handicapped in advancing its work because of the lack of funds. The organization has only 40 members, whose small annual dues are not sufficient to carry out the commendable program adopted by the society this season. All persons in Salem interested in the floral and beautification movement are qualified for membership in the society, and are urged to join and pit their efforts with the present membership in promoting the work.

Mr. Maruny, who is directing the work on the court house square flower beds is one of the most competent landscape gardeners in the state, and great credit was given him for the wonderful conversion he made of the state hospital grounds.

### Copper Opposed To Present Fort Rock Project

The expenditure of any considerable sum of money in the development of the Fort Rock irrigation district without first reaching an understanding with the U. S. Indian service as to the priority rights to the waters of Sycan creek and Silver creek and their tributaries, is discouraged by Percy A. Cupper, state engineer, in a letter to W. E. Sprague of Fort Rock, a director of the district.

Filings made by the Indian service, Cupper points out, would appropriate all of the low water flow of these streams, requiring the storage of winter water for the irrigation of the Fort Rock project if the Indian service claims and can prove priority right over the state's claim to the water involved. Cupper suggests that the district make application at once to the Indian service for the right of way across the reservation for the necessary canal lines, which action, he declared would probably bring the entire matter to the immediate consideration of the department.

### Pertain To Speak For France Over American Graves

Paris, May 27.—Marshal Pertain will speak in behalf of France at the Memorial Day exercises at Suresnes cemetery. Ambassador Hugh C. Wallace will represent the United States and both dignitaries will assist in decorating graves of American soldiers, turned the pair to Independence.

The biggest grain deal of the season at Pullman, Washington, has been closed by the sale of 25,194 bushels for \$66,389.

### IF WEAK, THIN OR NERVOUS DON'T WORRY

Try The Bitro-Phosphate Health System—\$300 Guarantee  
New York. If you are feeling run down, weak, nervous, tired in the morning, and generally ailing, these are the symptoms that should warn you to take care of your health.

Four persons in every ten are needing more phosphorus in their bodies. When you see thin and frail people; or those who are anemic, pale, frail, oft despondent or lacking in energy, you may look for the need of certain elements that make for a strong constitution. Some people, after relying upon preparations composed chiefly of salts, quinine, drastic drugs, iron, calomel, cod liver oil, etc., wonder why they find no benefit. That is easily explained by the fact that such persons need the phosphoric element, which is a most potent essential to health, and contained in BITRO-PHOSPHATE, the famous health preparation. Now obtainable everywhere.

The right thing for you to do is made a trial of BITRO-PHOSPHATE beginning at once. It is not a patent medicine; the formula is prescribed by many physicians for the ailments and weaknesses mentioned above. With every box of BITRO-PHOSPHATE, are a few simple health rules and a \$300 guarantee. Buy a box of BITRO-PHOSPHATE. It is sold and recommended by all good druggists everywhere. (adv)

# SUPPLY YOUR NEEDS FRIDAY AND SATURDAY For DECORATION DAY

Making Two Busy Days, These Low, Attractive Prices Specially Selected to Stimulate the Interest of Month-End Shoppers

## Groceries RIGHT AT THE MOST WANTED TIME COMES THESE GREAT SAVINGS FOR DECORATION DAY BUYERS.

|                                                       |     |                                            |                                                |     |
|-------------------------------------------------------|-----|--------------------------------------------|------------------------------------------------|-----|
| INSTANT POSTUM, Regular 30c for 25c; regular 50c..... | 42c | FLOUR SPECIALS FOR TWO DAYS                | JAPAN RICE, 2 pounds.....                      | 27c |
| KELLOGG'S CORN FLAKES and POST TOASTIES.....          | 12c | CROWN FLOUR.....                           | BEST WHITE NAVY BEANS, Special, per pound..... | 8c  |
| ITALIAN PRUNES, pound.....                            | 12c | HARD WHEAT FLOUR.....                      | OATMEAL, pound.....                            | 7c  |
| FIGS, 2 pounds.....                                   | 35c | VALLEY FLOUR, SPECIAL.....                 | <b>MEATS FOR PICNICS</b>                       |     |
| WESTON OIL, pint.....                                 | 39c | COFFEE SPECIAL                             | LIBBEY'S CORN BEEF.....                        | 34c |
| WESTON OIL, quart.....                                | 77c | EXTRA FANCY BEST COFFEE, Pound.....        | LIBBEY'S ROAST BEEF.....                       | 34c |
| RIPE OLIVES, Tall Cans, Special.....                  | 20c | PICNIC HAMS, pound.....                    | ROSEDALE SLICED BEEF, VEAL LOAF, Special.....  | 26c |
| BORDEN'S MILK, small size can.....                    | 6c  | COTTAGE ROLLS, Special, per pound.....     | LIBBEY'S LUNCH TONGUE, Special.....            | 37c |
| VAN CAMP'S PORK AND BEANS, No. 3 cans.....            | 32c | SHORTENING, No. 5 Shortening for.....      | LIBBEY'S VIENNA SAUSAGE.....                   | 14c |
| <b>COOKIES</b>                                        |     | 2 CANS CRISCO.....                         | LIBBEY'S DEVILD MEAT, 1/2.....                 | 8c  |
| EXTRA FANCY MIXED COOKIES, pound.....                 | 23c | PEANUT BUTTER, 5 pounds Peanut Butter..... | LIBBEY'S DEVILD MEAT, 1/4.....                 | 5c  |
| BROKEN COOKIES, pound.....                            | 15c | NUT MARGARINE, pound.....                  | CRACKERS—OYSTER and SODA CRACKERS.....         | 18c |
| GRAHAM CRACKERS, special per pound.....               | 45c | WALNUTS, Special 4 pounds.....             | CATSUP, Special, DEL MONTE.....                | 20c |
| COTTOLENE No. 2 size can.....                         | 50c | JAR RUBBERS..... 5c                        |                                                |     |
|                                                       |     | ROYAL CLUB COFFEE, 4 pounds..... \$1.48    |                                                |     |

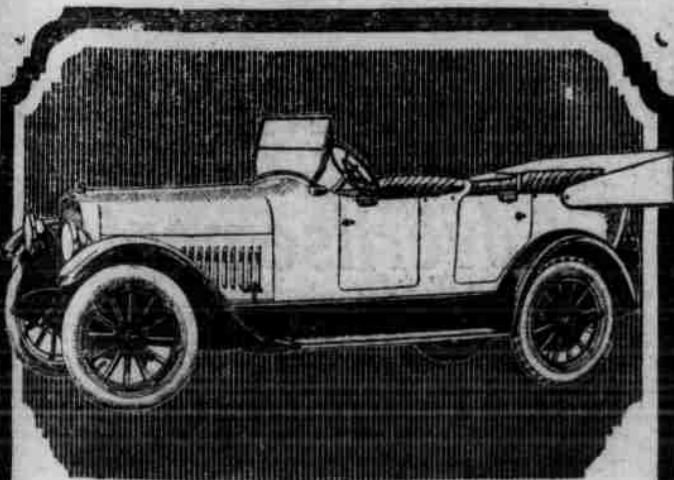
## WHITE SHOES Oxfords, Pumps and Sandals. Note These Cut Prices For Friday And Saturday

|                                                          |        |                                          |                                          |                                         |         |                                         |        |                                      |                                         |        |
|----------------------------------------------------------|--------|------------------------------------------|------------------------------------------|-----------------------------------------|---------|-----------------------------------------|--------|--------------------------------------|-----------------------------------------|--------|
| Ladies' White Canvas Shoes, military heels, special..... | \$3.79 | TENNIS SHOES                             | Men's Tennis Shoes, white and brown..... | \$1.48                                  | OXFORDS | Ladies' Black Kid Oxfords, Special..... | \$5.85 | MEN'S SHOES                          | Men's Brown English Shoes, Special..... | \$8.45 |
| Ladies' White Canvas Oxfords, military heels.....        | \$3.39 | Ladies' White Oxfords, Special.....      | 98c                                      | Ladies' White Kid Oxfords, Special..... | \$9.85  | Men's Two Tone Shoes.....               | \$6.95 | Men's Army Shoes, Special.....       | \$6.95                                  |        |
| Ladies' White Canvas Pumps, military heels.....          | \$2.98 | Children's White Oxfords, Special.....   | 74c                                      | Ladies' Brown Kid Oxfords, Special..... | \$5.65  | Men's Outing Bais, Special.....         | \$3.65 | Men's Heavy Work Shoes, Special..... | \$4.95                                  |        |
| <b>CHILDREN'S PUMPS</b>                                  |        | Youths' Brown Tennis Shoes, special..... | \$1.29                                   | Ladies' Dull Kid Pumps, Special.....    | \$5.85  | Boys' English Shoes, Special.....       | \$4.95 |                                      |                                         |        |
| Children's White Canvas M. J. Shoes.....                 | \$2.48 | Boys' Tennis Oxfords, Special.....       | 74c                                      | Ladies' Patent Oxfords, Special.....    | \$7.35  |                                         |        |                                      |                                         |        |
| Children's White Canvas Mary Janes.....                  | \$1.69 | Barefoot Sandals, special.....           | \$1.48                                   | Ladies' Grey Mouse Shoes, Special.....  | \$8.65  |                                         |        |                                      |                                         |        |
| Ladies' gray and black Shoes, high heels.....            | \$6.98 |                                          |                                          |                                         |         |                                         |        |                                      |                                         |        |
| Boys' Shoes Reduced.....                                 |        |                                          |                                          |                                         |         |                                         |        |                                      |                                         |        |

|                                            |        |                                            |        |                                                     |        |                                      |        |
|--------------------------------------------|--------|--------------------------------------------|--------|-----------------------------------------------------|--------|--------------------------------------|--------|
| <b>HOSIERY</b>                             |        | <b>DRESSES</b>                             |        | <b>DRESS GOODS</b>                                  |        | <b>HATS</b>                          |        |
| Ladies' Brown Hose, Special.....           | 54c    | Misses' Gingham Dresses, Special.....      | \$4.85 | Crepe de Chine, 40-inches wide, special.....        | \$2.75 | Children's Straw Hats, Special.....  | \$1.35 |
| Ladies' Tu Tone Hose, Special.....         | \$1.45 | Girls' Gingham Dresses, Special.....       | \$3.35 | Georgette, all colors, 40-inches wide, special..... | \$3.25 | Children's Spring Hats, Special..... | 74c    |
| Ladies' Brown and Black Hose, Special..... | 45c    | Ladies' Best Quality Dresses, Special..... | \$3.15 | Kabo Silk, Mercerized, yard.....                    | 67c    | Men's Panamas, Special.....          | \$3.45 |
| Ladies' White Hose, Special.....           | 50c    |                                            |        | Mercerized Georgette, the yard.....                 | 67c    | Men's New Spring Hats, Special.....  | \$3.45 |

## Economy Basement Specials for Decoration Day Shoppers That Will Attract Large Crowds.

|                                     |                                          |                                 |                                           |
|-------------------------------------|------------------------------------------|---------------------------------|-------------------------------------------|
| <b>WHITE OXFORDS</b>                | <b>DRESS SHOES</b>                       | <b>NOTIONS HALF PRICE</b>       | <b>FLAGS</b>                              |
| Ladies' White Oxfords Special.....  | Ladies Two Tone Lace Shoes, special..... |                                 | FOR DECORATION DAY, Special.....          |
| \$1.98                              | \$3.43                                   |                                 | 14c                                       |
| <b>HATS</b>                         | <b>REMNANTS 1/2 Price</b>                | <b>SHIRTS</b>                   | <b>STRAW HATS, Special</b>                |
| Men's Hats, all sizes, Special..... | Men's Work Shoes, good solid shoes.....  | Men's Work Shirts, Special..... | 15c                                       |
| 25c                                 | \$2.48                                   | \$1.00                          |                                           |
| <b>CANNED GOODS</b>                 |                                          | <b>BUTTONS 2 CENTS PER CARD</b> | <b>SAMPLE SHOES, small sizes, special</b> |
| 11 Mixed Cans.....                  |                                          |                                 | \$1.98                                    |
| \$1.00                              |                                          |                                 |                                           |



**Studebaker**  
SERIES 20 SPECIAL-SIX

Every impulse of the SPECIAL-SIX motor carries a smooth flow of energy to the rear wheels. There's no choking or sputtering—no interruption of action. You travel evenly at all speeds and under all conditions—over rough roads or up steep grades, with throttle low or wide open.

50-H. P. detachable-head motor; intermediate transmission; 110-inch wheelbase, giving maximum comfort for five passengers.

All Studebaker Cars are equipped with Cord Tires—another Studebaker product.

"This is a Studebaker Year"

MARION AUTOMOBILE CO  
Salem, Ore.

One Dozen Lemons FREE with every one dollar purchase and over.



Free Presents by saving your Premium Tickets Given with each Dollar Purchase.