



LARRY'S LESSONS AND AUTO ANSWERS BY LARRY D. STONE

GENERAL CARE.

Taking a personal interest in one's automobile is one of the most valuable assets that an auto owner can have.

I often have heard auto dealers state that they have turned a car over to a customer in good condition, with everything adjusted correctly, and that after a little time, when the driver thought he was becoming adept would make some minor changes and from then on, as he continued to work with his car he encountered difficulty.

Quite naturally each driver comes to learn his own car. He can perhaps tell better than anyone else some little defect when it occurs and perhaps can repair the same in a moment's notice.

Here's Good Advice.

The old timeworn advice to have plenty of air, plenty of gas, and plenty of oil is a hard piece of advice to best. If the average auto driver would look to that every day of the year he would add weeks of life to the cars and many more miles to the tires.

AUTO ANSWERS.

Dear Larry:—Will the ordinary auto tire stand more pressure than is designated on the instructions which are generally seen on the side-wall of the tires. G. W. H.

Answer:—You will probably find that with most tires you could over inflate without particular injury but it is always best to follow the instructions and you will have easier riding and less tire trouble.

Larry Stone:—Would you recommend a four-cylinder engine as practicable?—Gordon West, Centralia, Wn.

Answer:—Although at the present time there is an inclination to sizes and eights in pleasure automobiles, the four cylinder car is still holding its own and some of the highest makes today are fours.

track. Naturally lower gear ratio is used for the smaller track as the traction is greater on the turns and momentum can be gained on the long straightaway of the mile track.

Mr. Stone:—Is castor oil p. k. to use in a stock car?—Pan.

Answer:—I would say that castor oil is not at all necessary and far too expensive for ordinary use.

"Don't's" for Drivers

(Note—There are very few motorists who would willingly violate any traffic law, state or municipal. Most of the violations that are brought to the attention of police are the result of ignorance, although there are numerous violations because of recklessness.)

By Traffic Officer Moffitt. Please remember that the traffic officer is not trying to arrest you. He would rather not. I am not trying to see how many motorists I can arrest: 1

am trying to help you if you will let me. And it is only when a driver shows me by his actions that he has no regard for the rights of others that I resort to arrest.

I'm sure that if some of these "don't's" that follow are heeded fewer traffic violations will occur:

Don't come down town at night without two white lights burning on the front and one red light on the rear of the auto.

Don't drive your car with the license plates dirty. The law says they must be visible at all times.

Don't forget to fix your rear light so that it will show a white light on the state license number plate.

Don't forget to look both ways before starting your car from the curb, and to sound your horn before leaving the curb.

Don't pass a car faster than 10 miles an hour at any street intersection.

Don't forget to put your arm out when making a turn. You never can tell who is behind you.

Don't leave your car standing on the downtown streets without parking.

Don't forget to keep to your right, and turn the corner square.

Don't forget to have your headlights adjusted so they will be capable of throwing sufficient light ahead to reveal any person, vehicle or substantial object upon the roadway ahead a distance of 100 feet.

Don't forget to keep your brakes adjusted. You never can tell when you will need them badly.

Eleven million dollars will be spent in building better highways throughout the state of Montana during 1920, a part of which is sandwiched in between Yellowstone and Glacier national parks.

Delano Says It Takes Brains Also To Make Autos

"It isn't only materials that make an automobile—it's brains," says F. G. Delano, local dealer in Chevrolet passenger and commercial cars.

"It takes highly trained experts to determine that the materials are right. Steel, for instance, is a study in itself. Only specialists can develop steel to just the proper qualities.

"So it is with every part that makes up the completed automobile. Highly specialized minds are necessary to insure that each part is just right for the function it performs—that all combine to make a thoroughly dependable car.

"The designers who are constantly adopting the automobile to the use of the majority are men who have learned their business through practical study.

"Vision is required to see the needs of those who motor, and to anticipate those needs. Manufacturing common sense is essential in working out the mechanical details that will fit those needs.

"And consider the vast problems of organization necessary to produce so important a commodity as the motor car on a large scale. Not only is the question of manufacture a matter for great minds but also the questions of distribution and of sale.

"These are matters that require thorough experience both of production and of marketing if the consumer is to secure dependable value in the end.

"And the best way for the purchaser of an automobile to make certain that it will give satisfaction is to make certain of the men behind it—that they have proved their ability to develop an enduring reputation for their car in spite of the competition in the second largest industry in the world."

State Highway Commission At Work On Signs

The officials of the Oregon State Motor association have been striving to get some action from the State Highway commission toward proper sign-boarding of the state highways.

"Salem, Ore., Gentlemen: I am in receipt of a letter from your association requesting the signing of the Pacific Highway, and will state that a man has now been placed on this work, but it will be impossible for us to complete the signing before late fall.

There is much work to be done in this connection, and it requires the services of an expert which we have just secured; and, further, the State Highway commission is not yet decided upon a design.

The whole matter will be placed be-

fore the Highway commission at its next meeting and undoubtedly will go ahead rapidly. You, of course, understand that the reason for not proceeding previous to this time has been because the roads were not permanently located and definite distances could not be given.

Sincerely yours, HERBERT NUNN, State Highway Engineer.

Mr. Nunn goes on to say, however, that his department will attempt to post temporary pasteboard signs along

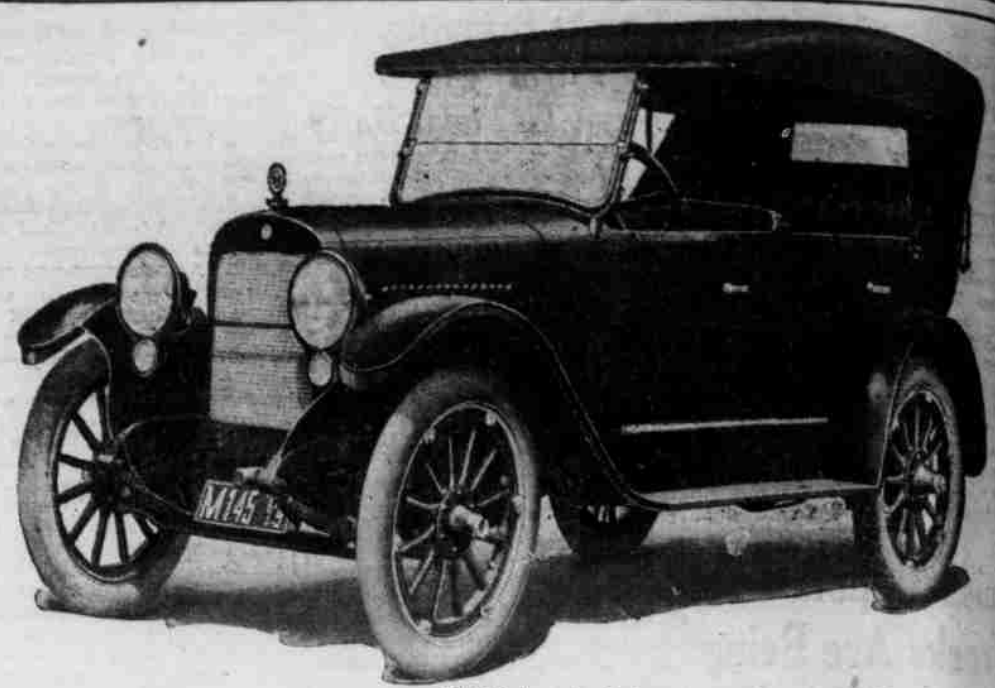
the route to be covered by the coming Ad Club caravan next May.

Tourist Grounds To Be Improved

Roseburg, Ore., April 13.—A large tourist travel by auto being expected this season, the city council last night voted \$300 for improving the free camp ground and also discussed the matter of securing another camping

ground in some other part of the city as it is believed the park on Deer street just off the Pacific Highway will be inadequate. The Roseburg Motor association was present and advocated a liberal policy in dealing with maintenance for the auto tourists.

Of the 150,000 former army men in the Knights of Columbus ranks throughout the country, \$2,000 is being taken up the motor mechanics course.



\$1650 f. o. b. Salem.

For Size, Beauty, Comfort, Power and Sturdy Endurance the Elcar Has No Rival at the Price

In the 1920 ELCAR models we present the most reasonably priced fine cars in America. It is an amply large, beautiful car, not extreme or faddish in style, but has the distinctive refinement of design that comes from nearly half a century of experience in fine vehicle building.

It is built for that large class of buyers who, while they demand size, beauty and comfort in an automobile, wish also to be sure of enduring, economical service, and who sensibly desire to obtain these essentials without wasteful cost.

This element of real quality, this excess value, was never provided in greater measure than in the 1920 ELCARS.

The four-cylinder engine is the Elcar-Lycoming, 3 1-2-inch bore and 5-inch stroke, developing 37 1-2 horsepower at 2100 R. P. M. Under the method of utilizing the power of this motor it surpasses any engine of similar dimensions we have ever known. It has quick getaway and on hills or wherever sustained surpl power is needed, its performance is amazing. It makes an enthusiastic friend of every owner. Ask for a demonstration.

The B. & C. Motor Co.

Lexington Minute-Man Six, 178 South Commercial Street, Auburn Beauty Six, Sandow Truck

Rebuilt Used Cars

These Cars have all been rebuilt, repainted, retired and retoped, when necessary before placing them on the floor for sale. The following are a few of our best buys.

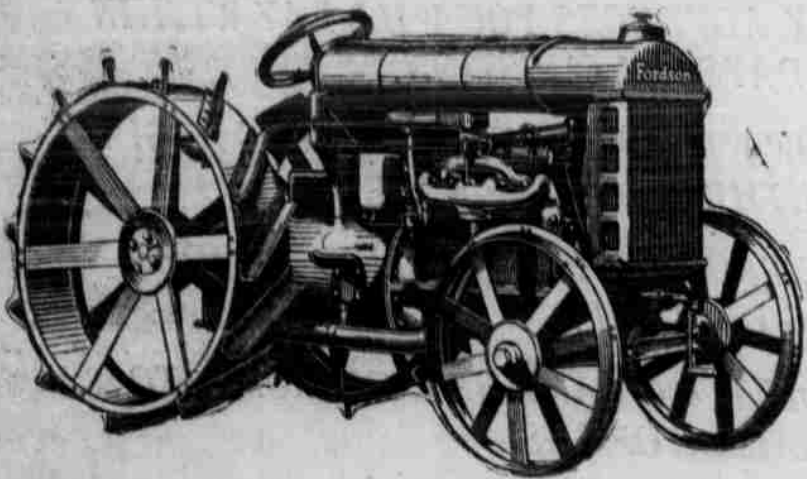
- 1919 Elgin Six, repainted and overhauled.
1918 Elgin, repainted brewster green—a good buy.
Overland Model 90, looks and runs like a new one.
1918 Maxwell, new tires, good paint.
Mitchell Six, late model, just been overhauled.
Harroun roadster, a wonderful performer, 26 miles to the gallon.
Chevrolet touring, good tires, overhauled. \$175 down, balance easy terms.

We will give you easy terms on any of the above.

LEE L. GILBERT

Phone 361 156 S. Commercial St.

GET READY For Your Farm Work FORDSON



We Can Make Immediate Deliveries

Why not buy that tractor now?

Sooner or later you must come to it, so why not now, and not only speed up your work, but also take the drudgery out of farming.

You have never seen a dissatisfied FORDSON owner. The reason is obvious.

Fordson Farm Tractors

Are simple in construction and built not only to stand the wear and tear, but constructed for economy of operation.

Valley Motor Co.

Power Farming Specialists.

Announcement

IT gives us a good deal of pleasure to announce that we have been appointed distributors for Horse-Shoe tires and tubes in this district.

We realize that we could only expect continued tire patronage as long as the tires we sold made good. Consequently we were very careful in making our selection.

States, Municipalities and many of the world's largest corporations are today using Horse-Shoe tires. Exhaustive tests proved the superior quality so thoroughly that

some of them specified that Horse-Shoe tires be used exclusively.

So good has this make of tire proven that the demand has increased nearly sixty-fold in the last six years.

Horse-Shoe products are of exceptional quality, yet when figured by Corporations on cost per mile basis they proved themselves by far the cheaper tire.

We would appreciate an opportunity to show, as well as tell you, of their merit.

GRUCHOW & SON 1875 State Street Salem, Ore.

