

## Lexington Auto Is Selected By Motor Expert

After years of study and identification with the automobile industry and close inspection of all cars at the New York and Chicago shows, a Lexington model was selected by Charles P. Root of Chicago, for the season's work ahead of him.

It was Mr. Root who managed the 1919 Elgin road race, as he did the first one in 1910, and he has also been selected as manager of the first national motor truck reliability contest, which is to take place in June. Like what he has been named as the manager of the 1920 Glidden tour, to be run from New York to San Francisco, 3400 miles in September.

Twice over the 3000 mile truck contest circuit the trip from Chicago to the starting point at Omaha and return and then on to New York the journey means the greatest variety of roads that could be devised, and for the greatest part of these roads are little more than virgin trails.

The work to be called for in a car in such service means it must have simplicity to make for stamina; speed which will be called for in this means that road tenacity is essential; and dirt roads as they come and mountain grades call for unwavering power.

Knowing what lays before him, what a car will be called for he selected the Lexington Thoroughbred as the one that in his judgment best fitted for his needs.

In the past ten years, since, May, 1909, to be exact, Mr. Root, who by the way is Chicago representative of A.A.A. contest board, has confined himself to just two cars and in that time has driven those two more than 200,000 miles. He was for some years editor of the Motor Age and also automobile editor of the Chicago Herald-Examiner and personally drove over the tourist routes that paper featured.

In short he is an automobile expert. The B. & C. Motor company of 175 South Commercial street, asks motorists in this section to watch the performance of the Lexington.

## Specialists In Auto Mechanics At Great Western

L. S. Hickman and E. W. Hobson, reputed as being the most expert auto mechanics on the coast, will assume charge of the mechanical and repair department of the Great Western Garage, 121 North High street, about April 15. It was announced at the garage this week. Hickman and Hobson are coming to this city from Portland, where they were connected with one of the largest auto distributing firms, Hickman as shop superintendent and Hobson as service foreman.

## Tommy Milton Sets World Record by Driving 50-Mile Heat 26½ Minutes

A new world's record for a mile and a quarter track was hung up by Tommy Milton in his Duesenberg last Sunday at the new Beverly Hills track near Los Angeles, Cal., when the veteran driver won the final 50-mile heat from a large field of racing stars in 26 minutes, fifty-two and two-tenths seconds—an average speed of 111.8 an hour.

**Klein Is Second.**  
Art Klein drove his Peugeot to second place, Pullen's big Richards took third honors while Roscoe Sarles by fine driving finished fourth, just within the money. The winners of all three heats made non-stop runs on Good years.

The race consisted of three fifty-mile heats—the first four drivers finishing in each heat qualifying for the finals. In the first heat Art Klein drove his Peugeot across the line a winner, closely followed by Milton's Duesenberg, Boyer's Frontenac and Hearne's Chevrolet. Klein's average speed was 110.8 miles an hour.

The newly-crowned racing king, Jimmy Murphy in his Duesenberg took the second heat with Pullen in his Richards in second place, De Palma with his Ballot third and Roscoe Sarles in his Frontenac fourth. Murphy's average speed for the distance was 110.7 miles an hour.

**Driving Is Wonderful.**  
Interest in the finals was raised to fever heat by the terrific speed and wonderful driving in the first two races. The wild-eyed thousands in the packed stands kept up a continuous din as the racers burned up the track in the furious struggle for supremacy. Ralph De Palma led the field until the thirty-eighth mile when a tire change delayed him long enough to keep him out of the money.

Quick as a flash Milton forced his car out of the van and crossed the line a winner amid the deafening applause of the spectators but not until he had been forced by his rival Hearne's Chevrolet. Klein's average speed for mile and a quarter tracks.

average," says John Harrison, Ford sales manager of the Valley Motor company. "Where the figure of this count show only 40 per cent of the cars enumerated were Fords, statistics show that 50 per cent of the motor vehicles in the country today came from the Ford factory."

## Vick Brothers Get Large Shipments Of Big Tractors

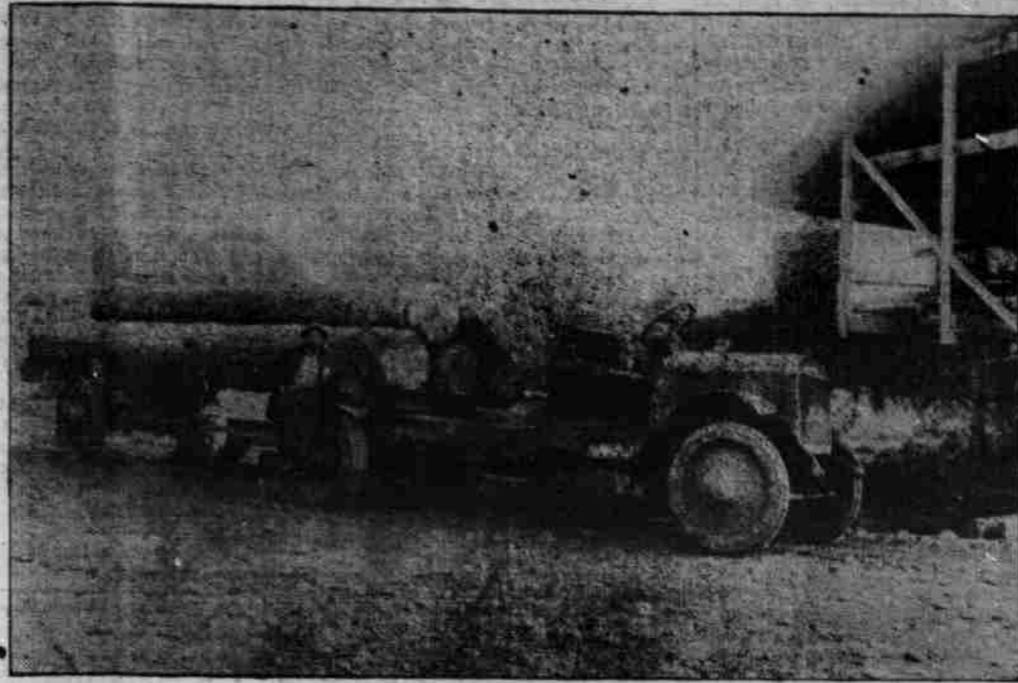
During March, Vick Bros., local Samson dealers, received one hundred and twenty-five tractors and during April they expect to get over 100 Samson tractors and trucks, largely trucks.

The Samson tractors, in two models, have been shown here the past month but the new truck has yet to make its appearance. The model 15 truck is rated at 3-4-ton capacity and the model 25 truck is of 1-1-4-ton size. Both are adapted to either city or farm use. By the use of an extension rim on the truck wheels, either truck is able to travel over plowed ground which is an item of special interest to farmers. This is a new device but one which will become very popular.

Vick Brothers have now severed all connections with the Ford line and will handle Samson products exclusively. During the last week they opened a branch at Woodburn which makes them six places of business in the valley.

Through the great part motor vehicles played in the defeat of "the enemy of the world" on battlefields of France, one of the leading manufacturers of motor trucks was decorated with the Croix de Guerre by the French government.

## Republic Carries 35 Tons of Logs



A 3½-ton Republic truck, owned by the Brown-Petzel Lumber company of Stayton, with trailer, hauling 35 tons of logs over rough roads near Silverton. Standing by the truck is the late George Warford, who drove for the Brown-Petzel Lumber company for four years, and always preferred the

Republic truck.

After using this truck for four years the Brown-Petzel Lumber company has bought another 3½-ton Republic and has assured W. H. Hildebrandt & company, Salem distributors of the Republic, that as business expands more

Republics will be pressed into their service.

Of the approximate 1000 Republic trucks being used in Oregon, 300 are being used in such heavy work as this one, hauling logs and lumber over some of the roughest roads in the state.

speed fast enough to make it an easy matter for themselves.

The county court has bought a new 1920 model electrically-equipped Harley-Davidson motorcycle from Harry W. Scott, Salem's Harley-Davidson dealer, that will be used by the county traffic officer. The motor in this motorcycle is of the same type used by Fred Ludlow in the recent speed trials on Dotonia Beach, in Florida, at which time he attained a speed of 103 miles per hour.

The twenty-dollar Federal Reserve Bank Note, series of 1919, has an engraving of an automobile on the reverse side.

## Motorcycle Club Here To Attend Big Hill Climb

Fully 25 members of the Salem Motorcycle club will ride to Oregon City Sunday, April 11, to attend the Hill climb which will be staged there by the motorcycle club of Oregon City. A large delegation from the Rose City club of Portland will also be there to take part in the events. Several of Portland's best riders will be there so a very interesting time is expected. The party from Salem will start

about 8 a. m., from the motorcycle store of Harry W. Scott's, 147 South Commercial street.

Several of the riders from Salem have expressed their intentions of entering the climb.

## Speeders Better Beware! Cop Gets Fast Motorcycle

It's going to go hard with speeders in Marion county this summer. As a matter of fact they won't be able to

## Auto Accidents Grow Less Every Year, is Claim

Automobile accidents continue to get on the front pages of the newspapers, but the fact remains that the ratio of these mishaps to the number of cars and pedestrians grows less each year.

"And the reason for it is the attention people are paying to the Safety First movement, which is one of the big things of the age," says Jno. D. Mansfield, general sales manager of the Dorr Motor Car company.

**Carelessness Ousted.**  
"Education has rooted out carelessness to an extent. When you are out on a popular and crowded highway you see comparatively few infractions of the rules. Driving which reminds one of the Wild West boys in the films is becoming scarcer. The owners of cars having learned that it does not pay. Some of them have learned this at an expense and others have caught the spirit of equal rights, which means safety.

"Of particular importance is watching out for children at all times. They do not know the rules, the direction into which they will jump from a bunch of kiddies is a closed book, so when in the vicinity of them it is well to be all eyes. There is no tragedy so appalling as that in which a child is the victim, and it is up to the motorist to help the little ones who cannot help themselves.

**Pedestrians Slow To Learn.**  
"Pedestrians are slower in learning the laws of traffic than are motorists, for the only penalty that attaches to their heedlessness is their own liability to accident. But they are learning. They mind the police much better and fewer of them cut across lots on the busy avenues.

"It is noticeable in the larger cities where there is the greatest congestion the percentage of accidents is smallest, and the reason for this is that both motorists and people on foot are playing the rules of the game—Safety First."

Iowa has more than 362,000 motor vehicles.

# CHANDLER SIX

The Most Closely Priced Fine Car

## We Let You Know What The Chandler Price Is

THE Chandler Motor Car Company, ever since the first Chandler Car was built seven years ago, has, in every advertisement issued to newspapers and magazines and all other forms of publications, stated the list price of the Chandler Car.

It states it now and will continue to do so. There is good reason for this and many thousands of motor car owners know it. This is the reason—The Chandler Six is the most closely priced fine car in the whole medium priced field.

Look through the pages of this paper or a magazine that may be lying on your table. There are probably from ten to twenty automobile advertisements. How many name the price of the car?

True, the cost of automobile production has increased in the past year, and it is still increas-

ing. But the Chandler Company, throughout 1919, with all its production greatly oversold, held to its price.

The Chandler Six of today is a highly perfected development of the Chandler Six seven years ago, which started the trend toward light-weight sixes. All the engineering skill and production efficiency at the command of the Chandler Company has been devoted to this one chassis and that fact is one of the reasons for the Chandler's leadership in its field today.

All Chandler bodies are mounted on the one standard Chandler chassis. Simple, sturdy and dependable throughout, its features part, the really marvelous Chandler Motor, solid cast aluminum motor base, annular ball bearings, silent chain drive for the auxiliary motor shafts, and Bosch magneto ignition.

Cars that May Compare with Chandler are Listed at Hundreds of Dollars More

SIX BEAUTIFUL STYLES OF BODY

Seven-Passenger Touring Car, \$1895      Four-Passenger Dispatch Car, \$1975      Four-Passenger Roadster, \$1895  
Seven-Passenger Sedan, \$2895      Four-Passenger Coupe, \$2795      Lorraine, \$3395  
All Prices f. o. b. Cleveland, Ohio

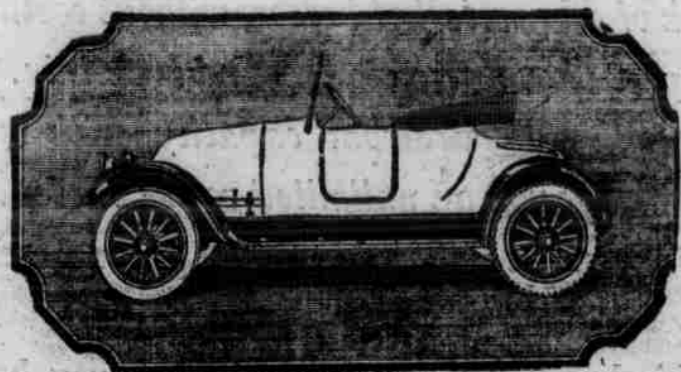
# Olson Motor Car Company

349 North Commercial Street, Salem

CHANDLER MOTOR CAR COMPANY, CLEVELAND, OHIO



Famous For Its Marvelous Motor



## Franklin Runabout

This is a real personal car for one or two people, light, rugged, convenient; in every sense deserving the name runabout.

Upholstry is hand-buffed, straight-grain black leather, semi-bright finish, applied in English straight plaits. The seat cushion is built in two parts. The floor is covered with horsehair carpet.

Equipped with one-man top and Always Ready curtains of Neverleak fabric, with two oval plate glass windows in read curtain. Removable attachments facilitate opening and closing the door with curtains in position. The body is designed so that a light detachable winter top can be fitted.

The seat back contains a compartment large enough to hold ordinary packages. The space back of the seat rail retains light parcels conveniently. The rear hamper provides room for suitcases and a spare tire.

Standard color is Brewster green.

Weight, fully equipped, without gasoline, 2315 pounds.

# Marion Automobile Co.

285 South Commercial Street      Phone 368  
Salem, Oregon