

Growers Urged to Sate Guard Prunes From Thrips Loss

Thrips, that minute enemy of pear and prune production is again in evidence in the Willamette valley, according to S. H. Van Trump, county fruit inspector. Mr. Van Trump has been making special surveys in local districts where the parasite is suspected or has made previous appearance.

Prof. A. B. Black and A. L. Lovett, entomologists of Oregon Agricultural college are expected in Salem next week for a conference in regard to the situation. While the county fruit inspector feels that the situation deserves the closest scrutiny, he states that growers should not be unduly alarmed at reports received at this early stage of the season.

However, growers are urged to keep careful watch over their orchards in order to prevent expensive ravages of the insects during the various stages of fruit growth. In one orchard north east of Salem, Mr. Van Trump describes the outcome of the inspection of a few prune sprays selected at random. After being placed in a warm place for a few moments these small half budded sprigs were shaken over a sheet of white paper, each dozen buds yielding about four or five of the small insects. It is explained that these sprigs were taken from a section of medium level, where the darker soil predominates. This however, can not be taken as a rule as the parasites have been known to appear under various soil conditions and in scattered sections, Mr. Van Trump advises.

Mr. Van Trump reiterates previous statements concerning the tendency of thrips to break out in "spotted" sections and also that it does not spread as rapidly as some other fruit scourges. This affords a good opportunity for eradication by spraying. Growers are advised however, to postpone spraying until the existence of the pest in their orchards is definitely established, then thorough application will prevent wide spread crop loss.

The department of entomology of O. A. C., has issued the following instructions pertaining to thrips spraying. A complete bulletin on the thrips situation may be secured by writing this department at Corvallis.

The practice of shipping nursery stock in the spring after the beginning of the period of activity of the thrips, should be prohibited. (This past season the thrips appeared about April 2.)

If exceptional cases arise where late shipments appear advisable that it be required that the plants, shrubs, or trees be dipped in the following solution or its equivalent:

Miscible oil No. 2 5 gallons; Black leaf 40, 1 pint; Water 200 gallons.

A regulation against shipping or carrying fruit blossom clusters from infested areas should be included.

Concerning spraying practices: No recommendations concerning spraying practices in Oregon are made. The regular spray program includes these applications:

1. When the adult thrips appear in numbers on the blossom buds, about March 20-April 5, use:

Miscible oil No. 2 5 gallons; Black leaf 40, 1 pint; water 200 gallons.

2. About a week before blossom open use:

Miscible oil No. 2, 2 gallons; black

leaf 40, 1 pint; water 200 gallons.

3. When prune petals are falling use:

Miscible oil 2 gallons; black leaf 10 1 pint; arsenate of lead 4 pounds; glue 2 pounds; water 200 gallons.

The experience of growers and reports of experts in California were overwhelmingly unified in this one point. To be effective the spray must be applied thoroughly, at exactly the right time, and from the proper angle.

"Walfelt"
Takes the place of house lining for less.

Max O. Buren
179 North Commercial

Draperies
MADE TO ORDER TO FIT YOUR WINDOWS

C.S. Hamilton
340 Court Street

FORD TRUCK WITH TWO TON ATTACHMENT RUNS LIKE A TOP

OSCAR B. GINGRICH
MOTOR & TIRE CO.
371 Court Street Phone 685

Buy Remnants
AT THE
Remnant Store
264 North Commercial

FOR LONG DISTANCE AUTO TRUCKING

Willamette Valley Transfer Co.

PHONE 1400

WE ALSO DO LOCAL HAULING

Welcome Relief From the Tortures of Rheumatism

Can Come Only From the Proper Treatment.

Many forms of rheumatism are caused by millions of tiny germs that infest the blood, and until the blood is absolutely freed of these germs, there is no real relief in sight.

The most satisfactory remedy for rheumatism is S. S. S. be-

cause it is one of the most thorough blood purifiers known to medical science. This fine old remedy cleanses the blood of impurities, and acts as an antidote to the germ of rheumatism.

S. S. S. is sold by druggists everywhere. For valuable literature and advice address Chief Medical Adviser, 107 Swift Laboratory, Atlanta, Ga.

American soldiers of the ages of 21, 23 and 24 predominated in the world war.

HIDES and SACKS WANTED

Also Junk of All Kinds Best Prices Guaranteed CALL 398

Capital Junk Co.
The Square Deal House
171 Chemeketa St. Phone 295

AUTO TOPS AND REPAIRING

Also upholstering of all kinds, seat covers, Service, O. J. Hull, Y. M. C. A. Building, Salem, Oregon.

L. M. HUM
Care of
Yick So Tong

Chinese Medicine and Tea Co. Has medicine which will cure any known disease.

Open Sundays from 10 a. m. until 8 p. m.

153 South High Street Salem, Oregon. Phone 283

Medals awarded to soldiers, sailors and marines who participated in the world war cost approximately \$5,999,990.

JOURNAL WANT ADS BRING 'EM

JOURNAL WANT ADS GET RESULTS

W. W. MOORE
House Furnisher
HOME OF THE VICTROLA
You get more for your Money at Moore's.

BAKE-RITE BREAD

The high standard of quality never changes. Rolls, Doughnuts, Cakes, Pies and Cookies.

Bake-Rite Sanitary Bakery
457 State Street.

MICHELIN Universal Cord
Quality Equipment for Your Car

Michelin Cord Tires and Michelin Red Inner Tubes represent the ultimate in quality and equipment, at a cost consistent with the excellence of the product.

The Michelin Cord Tire is built by an exclusive process. Each individual cord is not merely coated, but is actually impregnated with rubber. The finished tire is more resistant to shock and to the action of moisture, and is less subject to destruction from these causes.

It is significant that the recent trend of tread design observed the principle of a broad flat traction surface, introduced by Michelin some years ago. This is proven by the many trends of this type now being offered.

In designing the Michelin Cord Tire the original form of Universal Tread has been modified somewhat, to take full advantage of the greater flexibility and resiliency of the advanced Michelin Cord construction.

In appearance this new tire stands alone. Its unusually large size and heavy clean-cut, non-skid tread, reflect a thorough knowledge of the ultimate requirements on the road. In addition, there is character about this new tire that adds a final touch of quality to the most carefully equipped car.

Michelin, the oldest tire manufacturer, try one of these high quality tires and be convinced of its superior durability.

Adjustments made here

CLARK STIRE HOUSE
319 N. Com'l St. Phone 74 Salem, Oregon

GRAND OPERA HOUSE Tues., Mar. 30

THE BIGGEST SCREAM EVER OFFERED

Mutt and Jeff's Dream

The Laugh show Of the Age Positively every thing new

CATCHY MUSIC--GOOD COMEDY--PRETTY COSTUMES

—and—

A REAL BEAUTY SINGING AND DANCING CHORUS

Prices 50c, 75c, \$1.00, \$1.50

Seat sale opens Monday at Opera House Pharmacy

OWN YOUR OWN HOME

BUILD NOW!

AUTHORITIES UNITE IN DECLARING THAT PRICES OF LABOR AND MATERIALS ARE IN NO DANGER OF BEING REDUCED

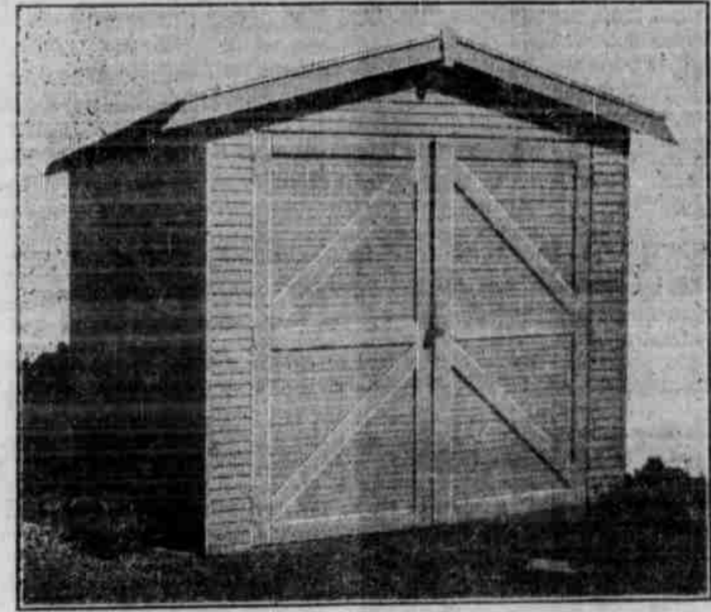
Don't wait for building schemes to mature. Build your house yourself Use your spare time Complete plans furnished free, makes it easy for you

ALL YOU NEED IS A HAMMER—THE STEEL BRIDGE OVER THE WILLAMETTE AT SALEM WAS MADE TO MEASURE—WHY NOT YOUR HOUSE

READY-CUT GARAGES **A NEAT AND COMPACT BUNGALOW**



Large living room, two nice bedrooms with commodious closets, kitchen, bathroom. All materials as enumerated below. Price \$1,286, f. o. b., Portland.



10x12	\$74.25	10x14	\$79.25
10x16	\$84.25	10x20	\$94.25

(Compare prices!)



Large living room, dining room, kitchen, two bedrooms, with closets and hall, price \$1809.00, f. o. b. Portland.

If you own your lot, I will loan you money to assist you in your enterprise. Over a dozen different plans to select from, \$1,200 to \$3,500

WHAT WE FURNISH WITH A MILLMADE READY-CUT HOUSE

POST—6x6 in. No. 1 Fir, cut to fit and marked according to plans.

SILLS—4x8 in. or 6x8 in., depending upon the size of house. Built up of 2 in. No. 1 fir CUT TO FIT and marked to conform with plans.

FIRST AND SECOND FLOOR JOIST—2x6 in. or 2x8 in. or 2x10 in., depending on the load and span, No. 1 Fir, spaced 16 in. on centers, unless otherwise specified. CUT TO FIT and marked to conform with plans.

ATTIC FLOOR JOIST—Where stairs are shown leading to attic, 2x6 in. No. 1 Fir, CUT TO FIT and marked to conform with plans.

CEILING JOIST—2x4 in. or 2x6 in. No. 1 Fir, CUT TO FIT and marked to conform with plans.

WALL PLATES—2x6 in. No. 1 Fir, CUT TO FIT and marked to conform with plans.

STUDDING—2x4 in. No. 1 Fir spaced 16 in. on center. Studs are doubled on all corners, door and window openings, where required. CUT TO FIT and marked to conform with plans.

RAPERS—2x4 in. or 2x6 in. No. 1 Fir, mitered, beveled, notched for plate, CUT TO FIT and marked to conform with plans.

PLATES—2x4 in. No. 1 Fir, single plate is used at bottom and double plate at the top of all walls and partitions. CUT TO FIT and marked to conform with plans.

SCAFFOLD AND BRACES—Are provided for in the lineal foot as per cutting sheet, under the heading of extra material.

BRIDGING—For all joists with a span of over 12 ft.

STAIR HORSES—For cellar, main or attic stairs and porch steps. The rise and run of stairs blocked out so you only have to nail them in place. CUT TO FIT and marked to conform with plans.

PORCH JOIST—2x6 in. or 2x8 in., depending on load of span. CUT TO FIT and marked to conform with plans.

PORCH CEILING JOIST AND RAPERS—2x4 in. No. 1 Fir, CUT TO FIT and marked to conform with plans.

BASEMENT WINDOWS, SASH AND DOORS—We call especially to your attention that we furnish all basement sash and doors per plans.

OUTSIDE DOORS—For front door you have your choice of several doors. The rear or side door is a 8-panel, 1-light, size as shown on plans.

INSIDE DOORS—One and two-panel, size as shown on plans.

INSIDE FINISH—Clear kiln dried selected fir sanded. We also furnish picture moulding.

HOOK STRIPS—1x4 in. hook strips are furnished for all closets.

COLUMNS OR POST—Columns where shown are built complete at our mill ready to set in place.

BUILT-IN FEATURES—Kitchen cabinets, buffets, book-cases, broom closets, colonnades, fireplace mantel shelves, ironing boards, linen closets, medicine cabinets, where shown, ARE NOT included in the price. A special price is given on each item, however.

HARDWARE—Doors are furnished with two hinges, mortised lock, and base knob.

WINDOWS—Sash weights, cord, pulleys, fasteners and lifts.

NAILS—Sufficient quantities and sizes of all nails required for the erection of our houses.

FLASHINGS—We furnish for chimney and all valleys. Metal ridge roll and hip shingles where shown. We DO NOT furnish gutters or down spouts.

PAINT—The ready mixed paint is furnished for two coats on all outside work. Color to be selected by purchaser.

SHEATHING FOR WALLS AND SUB-FLOOR—1 in. material surfaced, CUT TO FIT and marked to conform with plans.

ROOF SHEATHING—1x4 in. surfaced material, CUT TO FIT and marked to conform with plans.

SHINGLES—Extra Star A Star Red Cedar laid 4 1-2 in. to weather where shown on walls.

LATH—For all inside walls and ceilings.

GROUNDS—Our houses are all prepared to receive lath and plaster, we furnish 5-8 grounds.

BUILDING PAPER—We furnish enough sheathing paper for all outside walls and sub-first floor.

FLOORING FOR FIRST, SECOND AND PORCH FLOORS—1x2 in. vertical grain and CUT TO FIT and marked to conform with plans.

INTERIOR AND EXTERIOR MILL WORK

OUTSIDE TRIM—Such as fascia, frieze, corner boards, mouldings, etc., are carefully selected Fir and furnished in proper size. The verge boards are cut at one end ONLY. Brackets are CUT TO FIT and marked to conform with plans.

SIDING—Rustic clear. We furnish corner boards on all our houses, unless otherwise specified. Shingles can be had at no additional cost.

OUTSIDE STEPS—Unless shown of masonry, are CUT TO FIT and marked to conform with plans.

DOOR SILLS—Fir sills are furnished for all outside doors.

OUTSIDE FRAMES—Door and window frames are CUT TO FIT, ready to nail. All box window frames are bored ready to receive pulleys, etc.

SHINGLES—Where shown on side of house or dormers, we furnish creosote shingle stain for one coat. WE DO NOT furnish stain for roofs.

INSIDE FINISH—We furnish one coat of stain, color to be selected by purchaser, one coat filler, one coat of varnish, dull or gloss finish, as purchaser wishes. Putty and coloring material for all nail holes.

NOTE—This is sufficient material for a complete job on inside finish.

MASONRY

WE DO NOT furnish plaster, cement, brick for any walls, foundations, chimneys, fireplace, frieze or columns where shown on plans. We furnish you a complete list of these materials needed on any of our plans by request.

PLANS—A complete set of working drawings are furnished with each order. The plans are entirely different from the regular plan furnished by a builder; we show the exact size and location of practically each piece of material used in the construction of the house.

INSTRUCTIONS—We furnish with each order a special prepared set of instructions explaining in detail each operation from unloading the car to the complete house.

SHIPPING—WE DO NOT furnish material below first floor joists except basement windows doors and posts.

CHAS. W. NIEMEYER, 215-216 Masonic Temple, Salem. Telephones 1000-1014