

**COUGARS TRIUMPH  
IN GRIDIRON FINAL**

END SEASON ON A  
HIGH NOTE | **B1**

**GREG WALDEN BOWS OUT**

ANNOUNCES HE WILL NOT SEEK A NEW  
TERM IN CONGRESS IN 2020 | **A5**



WALLOWA COUNTY  
**CHIEFTAIN**

Enterprise, Oregon

134th Year, No. 29

Wallowa.com

Wednesday, October 30, 2019

**Winter weather is still up in the air**



Ellen Morris Bishop

The period of Nov. 1, 2019 through Jan. 30, 2020 is predicted to be warmer and wetter by Oregon Department of Agriculture meteorologists.

Predictions are for generally mild and wet weather, with possible arctic outbreaks

By Ellen Morris Bishop  
Wallowa County Chieftain

Weather forecasters from multiple Oregon agencies gathered in Portland last week to divine the looming winter's likely weather. Their conclusion is that it will be either cold or warm, with lots of snow or maybe not so much. Whichever we get, some of the winter may be a wild ride with some severe storms, possible arctic outbreaks, and lots of milder, but wet, weather.

"Based on the years that have similar patterns of Pacific ocean temperatures, 1969-70, 1977-78, and 1980-81," said Oregon Department of Agriculture meteorologist Pete Parsons, "it should be mild and tranquil early in November, with a chance of a cold outbreak, then turning stormy in December, with generally mild temperatures. Maybe a little cold weather in early January, but then milder, and typically mild in February, too."

The problem with forecasting this winter with certainty is that we are in an "ENSO-Neutral" weather pattern, Parsons said.

El Nino, a pattern which usually brings more severe winters to Wallowa County, is fading. And it's as yet unclear whether weather over the

Pacific is shifting back to chilly El Nino patterns, moving into La Nina, which tends to bring milder, drier winters, or just staying in neutral, and keeping us in limbo for awhile.

"We can get quite a variety of weather in ENSO neutral years," Parsons said.

Overall expectations for northeast Oregon during the three month period November 1 -Jan 30 are an average of 2.7 degrees warmer and 116% of average precipitation, near to above average

"The bulls-eye for really cold weather would be earlier in the winter, from late November through early January," Parsons said. "Later in the winter because of the ocean off the Pacific

See Weather, Page A7

**Spooks to be out in force for Halloween**

Communities have own festivities around county

By Bill Bradshaw  
Wallowa County Chieftain

They'll be on the Watch for the Witches in Joseph, Trunk-or-Treating in Enterprise and have a Fall Festival in Wallowa for Halloween this week.

Wallowa takes the lead today with its Fall Festival takes place from 5 p.m. to 7 p.m. in the Beth Johnson Room at Wallowa Elementary School, W. 315 First St.

They do that the day before Halloween "because everybody's going to be out trick-or-treating" on Halloween, said organizer Charissa McCulloch, a third-grade teacher at the school.

The festival will include

See Spooks, Page A7

Hermiston author tells how she's holding back

**PARKINSON'S DISEASE**



Carol Clupny

Carol Clupny starts at stage 13 of 33 to trek 1,000 miles on the Camino de Santiago from Spain to France. She will tell her story of actively pushing back her Parkinson's disease for 11 years at the VFW Hall, Sunday, the 10th at 2 p.m.

**Nov. 10 talk at the VFW Hall in Enterprise is free**

By Ellen Morris Bishop  
Wallowa County Chieftain

Carol Clupny of Hermiston is a Parkinson's disease warrior. She will recount her successful adventures in attacking the symptoms of Parkinson's disease over 11 years, including her 1,000 mile trek over Camino de Santiago in France and Spain. She speaks at the Eagle Cap VFW Hall in Enterprise, Sunday, Nov. 10 at 2 p.m. The VFW Hall is at 800 N River St Enterprise OR 97828 Phone (541) 426-4307.

The event, sponsored by the Wallowa County Parkinson's Disease Support Group, will be of interest to health professionals and persons who are affected directly or through others by the affliction. With aging, Parkinson's becomes more likely.

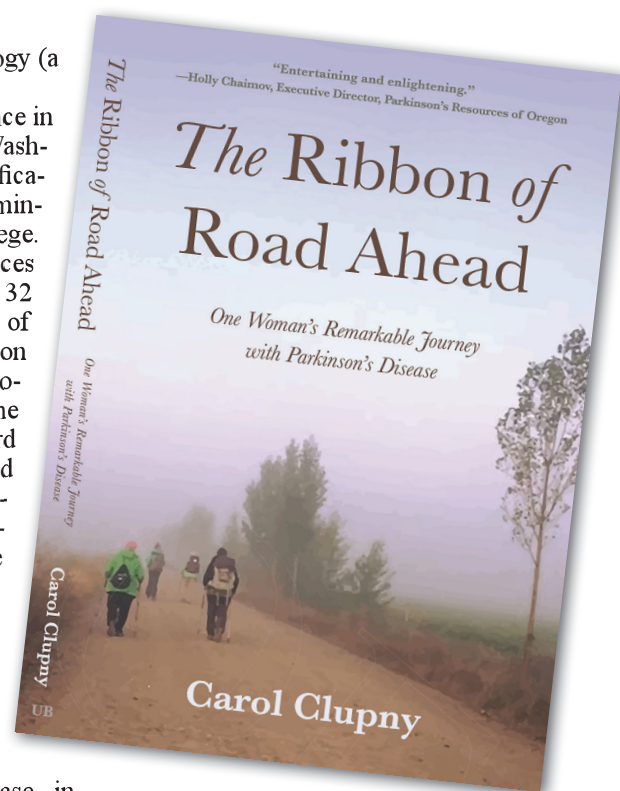
Clupny is author of "The Ribbon of Road Ahead: One Woman's Remarkable Journey with Parkinson's Disease," that has been widely acclaimed by professionals and patients dealing with the condition. She serves as a support group facilitator for Parkinson's Resources of Oregon (PRO).

The Parkinson's Foundation sought her leadership to plan a region-wide forum of women with Parkinson's, and she served two terms on the Oregon Board of Examin-

ers of Speech Pathology and Audiology (a governor's appointment).

Carol received a Masters of Science in Speech Pathology from Eastern Washington University and further certification in School Leadership and Administration from Lewis and Clark College. She provided speech pathology services and served as program director for 32 years in the wide geographic area of eastern Oregon. Active in the Oregon Speech-Language and Hearing Association she received honors of the association and the presidential award for her work on recruitment and retention of speech and hearing professionals. Carol presented numerous papers and projects at local, state and regional professional conferences. She was appointed by Governor Ted Kulongoski to two terms of the Oregon Board of Examiners of Speech Pathology and Audiology.

Suffering for years from unexplained symptoms, Carol was diagnosed with Parkinson's Disease in 2008. She retired as a speech-language pathologist after thirty-one years with the InterMountain Education Service District and settled into acceptance. Learning to live with a progressive neurological disease challenged her once active lifestyle. Shocked when getting outside to the mailbox became a struggle, she began walking; trekking over a thousand miles on pilgrimage trails in France and Spain. Reading that

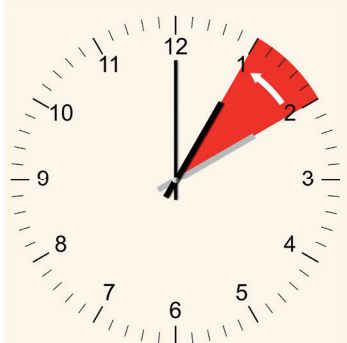


Clupny's book recounts her battle against Parkinson's disease, including her 1,000 mile trek across France and Spain.

bicycling helped mitigate the symptoms of Parkinson's Disease she started pedaling across Iowa four times with the Pedaling for Parkinson's Team. In 2016, Carol

See Parkinson's, Page A7

**FALL BACK**



Daylight Saving Time ends on **Sunday at 2 a.m.** when clocks are turned backward one hour to **1 a.m.** Sunrise and sunset will be earlier, which means more light in the morning.

