

# Wallowa Record begins publishing in Wallowa

## OUT OF THE PAST

Compiled by Hanna Brandt

### 100 YEARS AGO

Jan. 17, 1918

The first Wallowa County soldier to die in France is Harry A. Savage who lived on Eden Ridge for four years. He contracted pneumonia and died, according to dispatches.

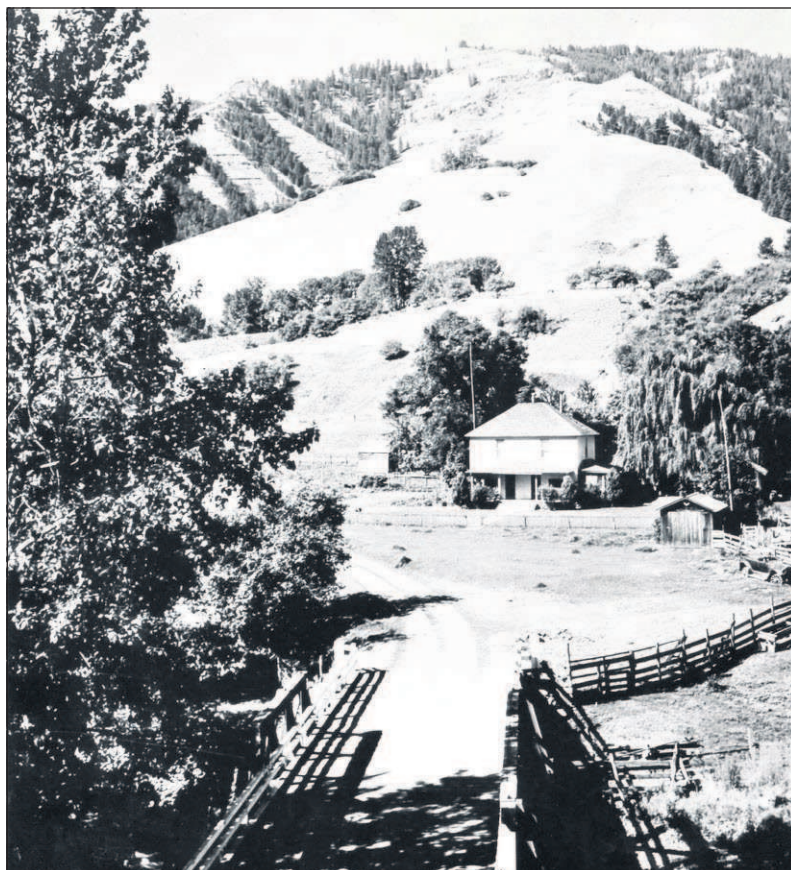
Wallowa County post offices have been unable to obtain the new three-cent postage stamps as of late because the government printing office has been overrun with work on thrift stamps and war saving certificates and cannot print them quickly enough.

J.W. McAlister, after referring to his diary, stated last week that he found a record of only two winters in the past years as mild as the present season. George D. Wood and Sam Wade were discussing it on the street last week and concluded that although the winters of 1891 and 1892 were moderate until the middle of January, they were not as warm as this year. In this season, there have been stretches of weeks without so much as a frost.

### 70 YEARS AGO

Jan. 15, 1948

The Wallowans Club at Wallowa has underwritten the purchase of a two-page press and a used Linotype typesetter that will be installed in Wallowa at a plant that will pub-



Chieftain file photo

A ranch house snuggles up against a partly wooded hill in the Imnaha region of northeast Oregon. This undated photo was provided to the Chieftain by the Oregon State Highway Commission.

lish the Wallowa Record. The Record, which was started last fall, has been published at the same plant as the Elgin Recorder.

According to a computation based

upon the number of water users listed in the files of the city recorder's office, the population of Enterprise is now 2,174. The current estimate indicates a population increase of 27 per-

cent since 1940. Using the same computation, Wallowa's population was estimated at 1,091 and Joseph's was estimated at 813 with increases of 30 percent and 28 percent, respectively.

Mrs. Sarah Whitman is believed to hold a Wallowa County record for number of great-grandchildren. With the birth of John Lee on Jan. 4 to Vivian and Leroy Pickron of Kalamazoo, Mich., the number of Mrs. Whitman's great-grandchildren rose to 28.

### 50 YEARS AGO

Jan. 18, 1968

John Engle of La Grande, with his Polaris snowmobile, was the winner of the six-mile cross-country race at Sled Springs on Sunday.

Local bank deposits continue to soar, according to figures released this week by the First National Bank of Oregon for the Enterprise branch. Deposits at the end of the year were \$9,141,241, up almost 20 percent from last year. This is an all-time record for the bank.

Wallowa County faces some school reorganization in the near future as the result of action by the 1967 Oregon legislature. The reorganization being contemplated calls for consolidation of IED districts — the county-wide, so-called rural school districts. Representatives from the La Grande district appear to be in favor of the proposition and have suggested that Union, Wallowa, Umatilla and Morrow consolidate under one board.

### 25 YEARS AGO

Jan. 21, 1993

The privilege of driving to the south shore of Wallowa Lake will cost motorists \$3 a day or \$20 a year under a new fee structure adopted by the Oregon Parks Commission. The proposed day use fee has already drawn heavy criticism from Wallowa County residents who say it will be bad for the local economy, bad for persons with small discretionary incomes, and bad for park and community relations.

A second avalanche in Imnaha, occurring Thursday, again blocked the upriver road and prompted the county crew to clear and open the road. This avalanche was of greater volume than the first, occurring at the same point above the Garnett Ranch from the hillside to the right of the Shevlin Meadows.

On the eve of President Clinton's inauguration, a Nez Perce-hosted reception in Washington, D.C., in conjunction with the annual meeting of the National Congress of American Indians was accompanied by a recitation of Chief Joseph's words by Allen Slickpoo. The event celebrated the dramatic expansion of the Nez Perce National Historic Park, which includes several sites in Wallowa County and provides federal support for educational and cultural services, inclusion in the National Park Service tourist and instructional publications and Park Service maintenance and protection.

## Eastern Oregon Backcountry Festival returns Jan. 19



A Joseph-based organization dedicated to avalanche safety will be in the limelight when the sixth Annual Eastern Oregon Backcountry Festival is celebrated Jan. 19-21.

For three days this winter, hundreds of folks will gather to celebrate backcountry culture, including an evening of film, fundraising for the Wallowa Avalanche Center, a memorial backcountry race at Anthony Lakes Mountain Resort, avalanche and snow safety clinics and live music.

"This is an amazing weekend of activities to show your support for the Wallowa Avalanche Center and gather together to celebrate the amazing winter recreation opportunities we have here in eastern Oregon," said EOU's Outdoor Adventure Program Coordinator Michael Hatch.

He is also a board member for the center.

The weekend begins Friday at Eastern Oregon University's Gilbert Events Center with a



Submitted photo

Michael Hatch, an organizer of the Eastern Oregon Backcountry Festival, takes in the view from Burger Butte in the Wallowa Mountains.

showing of "Rogue Elements" at 7 p.m. The event includes refreshments — beer and wine will be available for purchase.

A raffle and auction to benefit the Wallowa Avalanche Center will follow the showing. Prizes donated by businesses and individuals include a backcountry chartered flight over the Wallowas, a ski trip at one of the legendary Wallowa Alpine Huts, a BCA rescue package and outdoor gear

from Blue Mountain Outfitters in La Grande.

Tickets are available at the EOU Outdoor Adventure Program, Blue Mountain Outfitters and at the event. Admission costs \$10 for students and \$15 for community members 18 and older.

Saturday features back-to-back activity at Anthony Lakes Resort, eight miles west of North Powder in Baker County. On tap is the Sec-

ond-Annual Kip Rand Memorial Backcountry Race, which offers a cash prize or an Anthony Lakes season pass to the winners and requires pre-registration. Additional activities include snow and avalanche safety clinics, and live music by Bag of Hammers at the Starbottle Saloon.

Sunday features a social ski throughout the day. Groups can self-organize and explore the backcountry surrounding Anthony Lakes. Hatch will lead a tour into Angel Basin at 9 a.m. leaving from the lodge.

A full schedule is available at [goo.gl/cdQS9C](http://goo.gl/cdQS9C).

Victor McNeil is the director of the Avalanche Center, Julian Pridmore-Brown is deputy director. Board members include Jerry Hustafa, Keith McFarland, Paul Arentsen, Dana Nave and Hatch.

The organization was founded in 2009 by Keith Stebbings with a mission of providing individuals the tools to stay safe in the winter backcountry environment.

## Eleventh Annual Wallowa County

# Digital PHOTO Contest



### Who can enter?

All amateur photographers who live in Wallowa County either full-time or part-time, or who have ever vacationed in Wallowa County, are eligible. Exceptions: Members of the Wallowa Valley Photo Club, the staff of the Chieftain, and their immediate families may not submit entries. "Immediate family" includes only spouses, parents, and children.

**Public display of photos:** All submitted photos will be displayed on the Chieftain's web site as they are received. After judging, winning photos will be featured on the Chieftain's web site, and as many winning and non-winning photos as space allows will be featured in the Chieftain's print edition. Selected winning and non-winning photos may also appear in a single issue of the Wallowa Valley Photo Club's monthly newsletter and on the Photo Club's web site in the context of informing members of the Photo Club about the contest.

**Awards:** There will be two categories of awards.

1. The People's Choice awards for the most popular submitted photos, with 1st, 2nd, and 3rd places in each division. Everyone can vote by browsing to the Chieftain's contest web page and choosing their favorite Student Division photo and their favorite Adult Division photo. Prizes are \$40, \$20, and \$10, plus certificates.

2. Overall best photos, with 1st, 2nd, and 3rd places in each of the two divisions as determined by the judges. Prizes are \$40, \$20, and \$10, plus certificates. Honorable Mentions may be awarded at the discretion of the judges. Prizes for honorable mentions will be certificates.

The Wallowa Valley Photo Club is solely responsible for all awards.

**Deadline:** Submissions to the contest may be made beginning Monday, January 1, 2018 and will be accepted through **Saturday, January 20, 2018**. Voting for the People's Choice award is from Sunday, January 21, 2018 through Sunday, February 4, 2018. Winners will be announced in the Wednesday, February 14, 2018 issue of the Chieftain.

**Submissions:** All submissions must be digital — prints and slides are not accepted. However, prints and slides may be scanned and digital copies submitted. Digital photos may be submitted via the Chieftain's online submission form or emailed to **PhotoWallowa@gmail.com**. CDs may also be dropped off at the Chieftain (209 NW 1st, Enterprise, Oregon).

**Complete List of Rules:** Please see the website for a complete list of the contest rules at [www.wallowa.com/photocontest](http://www.wallowa.com/photocontest)

## Recycle Your Stuff for Cash in the Classifieds



Call or go online to browse, buy or sell!

Call Us Today 541-426-4567

## Wallowa County CHIEFTAIN

Wallowa County's Newspaper Since 1884

[www.wallowa.com](http://www.wallowa.com)

**Winding Waters**  
A Non-Profit Community Health Center

**OHSU Resident**  
Mustafa Mahmood,  
January 2 – January 25  
January 30 – February 8  
Hours:  
Monday-Friday  
7:00am to 7:00pm  
Saturday  
9:00am to 1:00pm  
603 Medical Parkway  
Enterprise, OR 97828

**JB BANE & COMPANY** ELECTRICAL & PLUMBING SUPPLIES  
ELECTRICAL & WATER SYSTEM CONTRACTOR  
PUMPS • IRRIGATION HARDWARE • APPLIANCE PARTS

208 S. RIVER ST. • ENTERPRISE, OR  
[www.jbbane.com](http://www.jbbane.com) • 541-426-3344

**Wallowa County Chieftain**  
SPACE RESERVATION DEADLINES  
For weekly display advertising is 5pm Friday for the following week. Ad Copy is due on Monday at 10am. Ads must be approved by 12pm Tuesday.

Wallowa County CHIEFTAIN  
To advertise call Jennifer at 541-426-4567  
209 NW First St. Enterprise, OR 97828 • [www.wallowa.com](http://www.wallowa.com)