

SALUTE TO VETERANS

ENTERPRISE K-3 STUDENTS PAY MUSICAL HOMAGE

Photos by Paul Wahl, Chieftain Editor



See more photos at Wallowa.com



Kim Hutchison of the VFW Post 4307 in Enterprise was on hand to lead the Pledge of Allegiance during "A Salute to Our Veterans" Nov. 9 at the EHS gym.



Enterprise Elementary first-graders sang "You're a Grand Old Flag" and waved American flags as part of their performance in "A Salute to Our Veterans" Nov. 9 at the EHS gym.



Gracie Carlsen, a senior at EHS, was the bugler for the Nov. 9 production of "A Salute to Our Veterans" at EHS gym. The event featured a series of songs performed by kindergarten through third-grade students.




Enterprise Elementary second-graders used paper plates to convey their message during "A Salute to Our Veterans" Nov. 9 at the EHS gym.



Evelyn Locken, left, Adelyn Vanderzanden and Hallie Duncan joined the percussion section as part of a performance during the Enterprise Elementary School's "A Salute to Veterans" Nov. 9 at the Enterprise High School gym.

Student of the Week



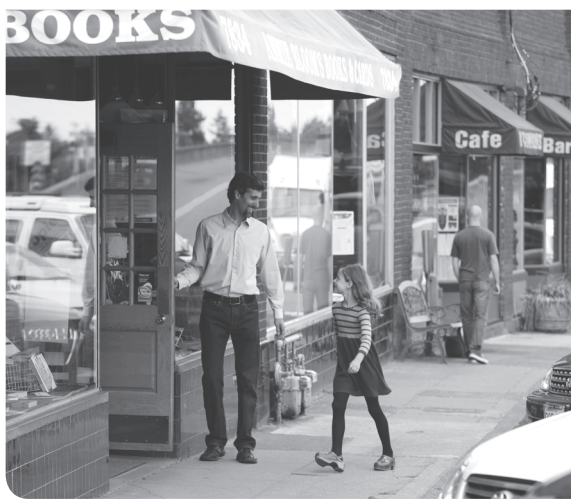
Kenon Nash
ENTERPRISE
SDA CHRISTIAN SCHOOL

Kenon Nash is a sixth-grade student at Enterprise SDA Christian School. He is on honor roll for the first quarter and has an excellent work ethic. He enjoys building things from wood and entering pie contests — quite diverse interests! He is a positive role model and relates well with students of all ages. We are proud of his accomplishments and that we are able to reward him as student of the week.

Proudly sponsored by
Community BANK
Local Money Working For Local People

Joseph 432-9050
Enterprise 426-4511
Wallowa 886-9151

The Student of the Week is chosen for academic achievement and community involvement. Students are selected by the administrators of their respective schools.



OREGON MANUFACTURERS. LOCAL BUSINESSES. YOUR NEIGHBORS.

ALL GETTING MORE FROM THEIR ENERGY.

Here in Oregon, thousands of businesses and individuals are saving money with help from Energy Trust of Oregon. With cash incentives for energy improvements, we can help you get more from your energy.

+

Are you ready to get more from your energy?
Visit www.energytrust.org or call us at **1.866.368.7878**.

Serving customers of Portland General Electric, Pacific Power, NW Natural, Cascade Natural Gas and Avista.



Introducing Medicare Town Hall

If you are on, or about to be on **MEDICARE**

Join us for this informational meeting!

Wednesday, December 6th - 3:30 pm
Wallowa Memorial Hospital Cafeteria

- Find out what is covered – and what is not •
- Talk to insurance providers •
- Learn what to expect •

Wallowa Memorial Hospital
601 Medical Parkway, Enterprise

To register for this free meeting, call
Ashley Sullivan
Business Office Lead
Wallowa Memorial Hospital
541.426.5302

This is a FREE EVENT

Wallowa Memorial Hospital
We treat you like family.

601 Medical Parkway, Enterprise, OR 97828 • 541-426-5311 • www.wchcd.org
Wallowa Memorial Hospital is an equal opportunity employer and provider.