

Welcome home 'Wally'

By Kathleen Ellyn
Wallowa County Chieftain

The Dragons in the Wallawas Paddling Club will be riding their own version of the legendary Lake Monster this spring and summer.

Earlier this week the club welcomed a Kaohsiung-style boat to Wallowa County.

The club normally races on Wallowa Lake in the smaller Hong-Kong style racing boats and can be seen practicing (with decorative head and tail removed) from May through mid-September. The Kaohsiung boat is much larger and the head and tail are not removed for practice.

The 20-person, dragon-headed, ceremonial dragon boat is the boat most associated with the Portland Rose Festival Dragon Boat Races, an annual cultural event hosted by the Portland-Kaohsiung Sister City Association. The Portland event — held in conjunction with the Rose Festival — features as many as 96 dragon boat teams from all over the world who race on the Willamette River at Tom McCall Waterfront Park in downtown Portland.

The Kaohsiung boats used in Portland are slightly smaller than those used in Taiwan so that they will fit



Kathleen Ellyn/Chieftain
Mike Lockhart and Jea Oh pose with the striking Kaohsiung-style dragon boat recently acquired by the Dragons in the Wallawas Paddling Club.

in shipping containers. They are 40-feet 6-inches long and 5-feet 4-inches wide, and each weighs 1,760 lb. They hold 20 paddlers, a caller, a tiller and a flag catcher.

"I think the boat will be an icon on the lake," said Mike Lockhart, organizer of the Wallowa Lake Dragon Boat race event.

Local Dragons were encouraged to participate in the Portland Race from the moment the Portland clubs heard of the Wallowa club. Wallowa's first dragon boat race held last August featured the sleeker Hong Kong racing boats and will continue to do

so. Portland and Vancouver teams came to race at Wallowa Lake both for the beautiful event and in support of the local team.

By acquiring the very stable Kaohsiung boat local Dragons can also attend the Portland races and manage the rough waters of the Willamette River.

The Dragons in the Wallawas Paddling Club has named their Kaohsiung boat "Wally" after the fabled Wallowa Lake monster.

To keep up to date on the dragons visit their "Dragons in the Wallawas" Facebook page.

Budwig records thinking man's album

By Steve Tool
Wallowa County Chieftain

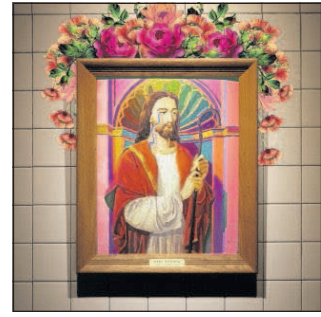
Local musician Bart Budwig is thinking a lot about Jesus. So much so that he recorded an album "Paint by numbers Jesus." The album title refers to a painting given to him by a friend while Budwig lived in Moscow, Idaho. The painting is in fact a paint-by-numbers work of art that hangs on the wall in Budwig's apartment.

The painting is featured on the album's cover although in a psychedelic graphics altered version done by San Francisco artist Gillian Keller. It somewhat resembles a 1960s-themed stained glass window.

"It's over-the-top gilded, and I think it's cool and beautiful and fun. It has a real 'finish' to it, which is part of the inspiration," Budwig said.

Unlike Budwig's earlier efforts, this album, which took two days to record and three weeks of production, features eight songwriters.

"There's seven covers and three originals. Part of the concept was mixing those together, because if I wrote all the songs it would all be just my thoughts, you know, I wanted it to be broader and have more writing styles," he



Contributed art
The cover art for Bart Budwig's album, "Paint by Numbers Jesus" which is scheduled for release on April 1.

said. The originals were all written recently.

Included on the album are such staples as "Chocolate Jesus," "Saturday Satan, Sunday Saint" and "Dropkick me, Jesus."

I just picked songs that resonated with me and had some portrayal of Jesus in them. They're more personal and help me to make sense of it in my own way. The point of this isn't to be disrespectful — not at all. It's more about me exploring ideas and also wanting to bring people together with music and hoping my ideas will get people to thinking and having conversations about Jesus or religion," Budwig said. He added that although he hopes to provoke discussion among

friends, that most of the songs are funny or fun.

Although the album is in Budwig's neo-tradition country style, his vocals have a harder edge and the guitar work is particularly inventive.

"I wanted this to be more of a rock'n'roll/groovy album, which is why I call it 'Swamp County.' The band was really groovy, and we cut the album live. On some of the faster songs I was having fun. I was dancing and singing, the band was so fun."

As a working musician and sound man, Budwig isn't exactly overflowing with cash. This recording is only available through cassette tape and digitally online because a vinyl record generally takes about \$2,000 to produce and about \$1,000 for professional mastering. He didn't have the money for a CD release either. The album is available on Spotify as well as Google Play and iTunes.

Regardless of the available formats, Budwig is having an album release party at 7 p.m. May 11 at the OK Theatre as part of the album release tour. Local pianist Seth Kinzie, who is featured on the album, will also appear at the party. Admission is \$15.

Wallowa Valley Chorale Spring Concert approaches

By Kathleen Ellyn
Wallowa County Chieftain

Randy Morgan never gets tired of hearing Wallowa County folks make music.

And at 7 p.m., April 5, all the fans of the Wallowa Valley Chorale will join him in enjoying the voices of their neighbors raised in song as Morgan directs the local chorale in the Spring Concert to be held in the Enterprise Christian Church, 85035 Joseph Highway.

Morgan taught music at

Enterprise Schools for 38 years before "retiring" to keep right on conducting singers and helping organize musical events. That makes him as dedicated as singers in the chorale, some of who have been singing with the group since the 60s.

The chorale boasts from 24-30 members (depending on the time of year) who range in ages from 13 to 91 years of age.

The Wallowa Valley Chorale as an entity is historic as well — Chieftain archives show performances by the chorale in

the 1950s. Programs presented by the chorale continue in popularity, with the 2016 Spring Concert crowd swelling to nearly 300 attendees.

A large crowd is expected again this year as a 13-song collection of Folk, Classic Rock and Christian music fills the church sanctuary.

Special features include Casey and Danny Lawson of Enterprise performing a four-hand piano piece of sacred music, a compilation of Beatles tunes sung by the chorale, and two solo pieces: A spiritual by



Courtesy photo
The Wallowa Valley Chorale at a recent performance.

Cindy Parks and a Tanzanian song for peace and hope sung by Denny Kolb.

Admission is by donation and the program is funded entirely from those donations.

Call Randy Morgan at 542-263-0327, if you have questions



DOUBLE ARROW VETERINARY CLINIC PC

Initial exams are always complimentary for any new companion animal

Come see what 39 years of experience looks like!

We are your high-tech, hometown vet and we are here to help!

541.426.4470 | 66260 Lewiston Hwy | doublearrowvet.com



ENTERPRISE EDUCATION FOUNDATION

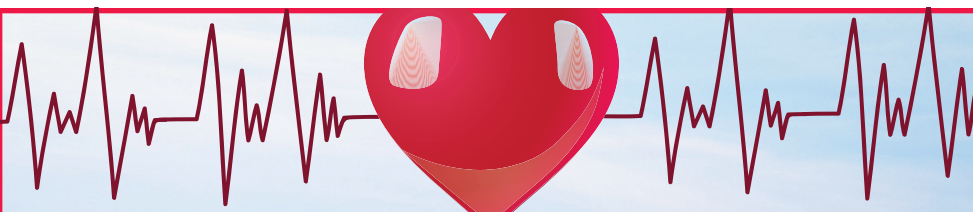
13th Annual

WE LOVE OUR KIDS

April 7, 2017
Auction & Dinner
at the Cloverleaf Hall.
Doors open at 5 pm
Dinner at 6 pm

All proceeds benefit Enterprise Schools' arts and music programs

To donate auction items or purchase tickets contact Sandy at 541-426-3812



FUNDRAISER AUCTION & KARAOKE

*for Wallowa County Project Heartbeat
Imnaha Responders Program*

Medical supplies and training are needed for volunteer responders

Auction & Karaoke will be held at the
Imnaha Store & Tavern | Saturday, April 1st

Locally homemade desserts

A variety of items donated by Wallowa County businesses

CASH OR CHECK ONLY

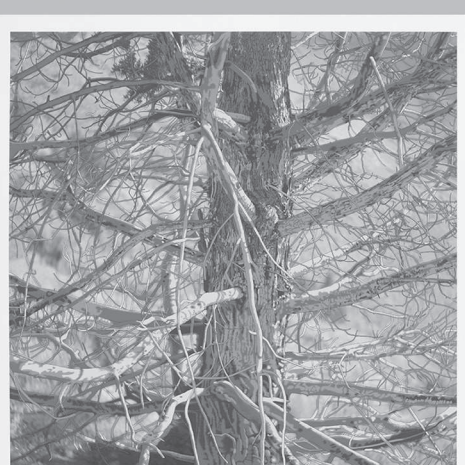
For a list of current items donated, call Kendra @ 541-577-3158 or Bertie @ 541-577-3191

**Viewing of items at 1pm | Auction at 2pm
Karaoke by DAVE & KENDRA 5-9pm**

JOSEPHY CENTER FOR ARTS AND CULTURE WELCOMES

OREGON PRINTMAKERS

FROM THE COLLECTION OF CHRISTY WYCKOFF



APRIL 1ST - MAY 30TH, 2017

OPENING RECEPTION APRIL 1ST AT 7 PM	LIVE & UP FRONT WITH CHRISTY WYCKOFF MAY 26TH AT 8 PM	CLOSING RECEPTION MAY 26TH AT 6:30 PM
--	---	--

WWW.JOSEPHY.ORG 541.432.0505 403 N MAIN ST PO BOX 949 JOSEPH, OR 97828

PROM NIGHT:

- ✓ Perfect date
- ✓ Perfect outfit
- ✓ Perfect ride
- ✓ Perfect dinner
- ✓ Stay alcohol and drug free



Make Prom Perfect™

Sponsored by the Wallowa County Safe Communities Coalition and the Union County Safe Communities Coalition
Find us on Facebook!



Union County Safe Communities Coalition



Wallowa County Safe Communities Coalition