

YEAR'S FIRST NEWBORN



Steve Tool/The Chieftain

Congratulations to Eric Quade Butterfield and Katie Lynn Butterfield, parents of Oliver Dallas Butterfield — Wallowa County's first newborn of 2016. Oliver was born at 8:51 a.m. on Jan. 6 at 7 pounds, 6 ounces. Katie is the daughter of Bev and Gary Fuller, and Eric is the son of Lori and Dan Butterfield. It's the second consecutive year the Butterfield family has claimed the first-born honor. Last January, Eric's brother Robert and his wife Julie welcomed son Steven, the county's first newborn of 2015.

OBITUARIES

Zana E. Shuman,
Feb. 20, 1936 to Jan. 13, 2016

Zana E. Shuman of Pendleton passed away Jan. 13, 2016 at Providence St. Mary Medical Center in Walla Walla, Wash. She was 79 years old.

Zana was born Feb. 20, 1936, in Enterprise to Ralph and Bernice (Conrad) Lindley. She was raised in Flora, where she attended Flora Grade School, then moved to La Grande in 1948, where she graduated from La Grande High School. She married Joseph Shuman on Aug. 27, 1955 in Lewiston, Idaho. They lived in Flora until 1987. After retirement they moved to Pendleton, staying some winters in Arizona. Zana had been employed by Moon Drug Store in La Grande. She then worked as secretary of Flora Grange and secretary of Flora School. She later weighed wheat trucks for Wallowa County Grain Growers and was a contract flagger. She was a member of the Flora Grange for 20 years. She enjoyed spending time with her family, quilting, camping, target practice, fishing, playing cards and reading.

Zana is survived by her husband of 60 years, Joe Shuman of Pendleton; daughters Dena McCrae and husband Mark of La Grande, and Donna Vogel and husband Rick of Pendleton; sister Lila Killingbeck and husband Thad of Boardman; four grandchildren; three great-grandchildren; and six nieces and nephews.

She was preceded in death by parents Ralph and Bernice Lindley, sister Nita Rogers, and son Lyle Shuman.

A memorial service will be held at a later date. Burns Mortuary of Pendleton is in charge of arrangements. Sign the online condolence book at www.BurnsMortuary.com. In lieu of flowers, contributions in memory of Zana Shuman may be made to a charity of the donor's choice and may be sent in care of Burns Mortuary of Pendleton, P.O. Box 489, Pendleton, OR 97801.

Michael E. Clark
Aug. 24, 1940 to Dec. 30, 2015

Michael E. Clark, 75, passed away Dec. 30, 2015 at the Oregon State Hospital in Salem following a prolonged illness.

He was born Aug. 24, 1940 in Ventura, Calif., to Chester and June Clark. The family moved to Lakeview in 1946. He grew up on his father's wheat farm west of town.

Mike graduated from Lakeview High School in 1958 before attending the University of Oregon as a Daly Fund scholar.

A world traveler, Mike lived for extended periods in Japan, Korea, Australia, Mexico, Brazil and Canada.

He spent the last several years of his life in Enterprise. As a member of St. Katherine of Siena Catholic Church, he served as a reader and sang in the choir. He will be missed by many close friends.

Highly intelligent, he also was gifted with a beautiful singing voice, a proclivity for learning languages and an uncanny ability to charm.

He was preceded in death by his parents and is survived by sisters Arlene Clark of Lakeview and Janet Dent of Eugene.

A memorial mass will be held at 9 a.m. Jan. 22 at St. Katherine, followed by private entombment at Enterprise Cemetery. Arrangements are entrusted to Bollman Funeral Home.

DEATH NOTICES

Ernest F. Paterson

Ernest F. Paterson, 74, of Wallowa died Jan. 18, 2016 at Wallowa Memorial Hospital. A complete obituary will be published soon. Bollman Funeral Home is entrusted with arrangements.

Pamela Jean Howland

Pamela Jean Howland, 62, of La Grande passed away Jan. 13, 2016 at her residence. A full obituary will be published at a later time. A memorial service will be held at 11 a.m. at the La Grande First Baptist Church on Saturday, Jan. 23. Loveland Funeral Chapel & Crematory will be handling the arrangements.

Buck hunt raffle to benefit Wallowa schools

Wallowa County Chieftain

hancing projects.

The Nature Conservancy has donated a Zumwalt Prairie buck hunt to the Friends of the Wallowa School District, and the district will hold a raffle of the hunt to raise funds for its many education en-

This is not a guaranteed hunt, but in previous raffle hunts the success rate has been over 95 percent.

To enter the hunt raffle, call Greg Noble at 541-886-3192 or Kathleen Schmitt at 541-398-2244.

You also may send a check to FWSD/Buck Hunt, P.O. Box 229, Wallowa, OR 97885.

The tickets will be sent to you, so be sure to include a return address.

Raffle tickets are \$25 each, or \$100 for five tickets. There

are 500 tickets for sale. The drawing will be held March 30.

Hunting parties will be limited to three, and the winner is responsible for tag and license fees.

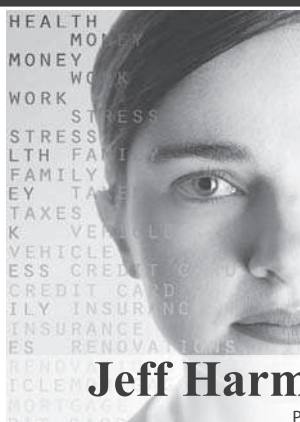
For more information, please call Noble or Schmitt.

Thank You

Joy Harrington and her family wish to thank all our Wallowa County friends for the beautiful flowers, cards, phone calls and Masses said for Ed Harrington, our beloved husband, father and grandfather.

Ed thought of our home on Alder Slope as his little piece of heaven so I know he's still there in spirit with a smile on his face watching his deer, pheasants and quail. I also know he sends his love to all our dear friends in Wallowa County and at St. Katherine's Catholic Church and that he will be looking over you.

Love to all,
Joy and Family



Are you feeling stressed and overwhelmed?

Do you feel hopeless or has the joy gone out of your life?

Are you struggling to make your marriage work?

I can help!

A few sessions can make a big difference.

Jeff Harman, MA., LPC

Professional Counseling In A Private Setting

www.jharmancounseling.com

To schedule an appointment call Jeff Harman (541) 426-3067

Preferred Provider for Regence Blue Cross, ODS, Cascade Centers and many other private insurance and employee assistance programs.

About Obituaries




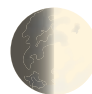
News obituaries are a free service of the Wallowa County Chieftain. The paper accepts obituaries from the family or funeral home. Information submitted is subject to editing. Send obituaries by e-mail, obits@wallowa.com; fax, 541-426-3921; or mail, PO Box 338, Enterprise, OR 97828. The deadline to submit an obituary is 2 p.m. Monday for the Wednesday paper. For more information, or to inquire about a paid memorial, call 541-426-4567.

Weather Forecast 

Courtesy of Weather Underground. www.wunderground.com

	High	Low	Conditions
Jan. 21	35	31	Overcast
Jan. 22	37	28	Chance of rain
Jan. 23	34	21	Snow
Jan. 24	33	20	Partly cloudy
Jan. 25	34	27	Mostly cloudy
Jan. 26	37	30	Snow

Phases of the moon

Jan. 23	Jan. 31	Feb. 8	Feb. 15
			
Full Moon	Last Quarter	New Moon	1st Quarter

WALLOWA COUNTY SUNRISE, SUNSET JAN. 20-26
(from the U.S. Naval Observatory)

WED	THUR	FRI	SAT	SUN	MON	TUES
Jan. 20	Jan. 21	Jan. 22	Jan. 23	Jan. 24	Jan. 25	Jan. 26
Rise: 7:22	Rise: 7:21	Rise: 7:20	Rise: 7:20	Rise: 7:19	Rise: 7:18	Rise: 7:17
Set: 4:39	Set: 4:40	Set: 4:41	Set: 4:43	Set: 4:44	Set: 4:45	Set: 4:47



WIN \$200!

Look in next week's Chieftain for our football contest entry form for a chance to win \$200!

2016 Big Game SUPER BOWL 50 Contest, Feb. 7.
Entries are due to the Chieftain office by Feb.5.
More details in next week's paper.

WALLOWA COUNTY CHIEFTAIN

209 NW First St., Enterprise • www.wallowa.com